

Data Path : Z:\pestpcbsrv\HPCHEM1\FID_D\Data\FD071718AR\
 Data File : FD025082.D
 Signal(s) : FID2B.CH
 Acq On : 17 Jul 2018 22:11
 Operator : AJ\SJ
 Sample : J4016-11
 Misc :
 ALS Vial : 60 Sample Multiplier: 1

Integration File: autoint1.e
 Quant Time: Jul 18 05:19:33 2018
 Quant Method : Z:\pestpcbsrv\HPCHEM1\FID_D\methods\Aromatic EPH 062118.M
 Quant Title : GC Extractables
 QLast Update : Fri Jun 22 09:02:19 2018
 Response via : Initial Calibration
 Integrator: ChemStation 6890 Scale Mode: Large solvent peaks clipped

Volume Inj. : 1 µl
 Signal Phase : Rxi-1ms
 Signal Info : 20M x 0.18mm x 0.18µm

Compound	R.T.	Response	Conc Units

System Monitoring Compounds			
4) S 2-Bromonaphthalene (S...	7.473	5130923	56.089 ug/mlm
Spiked Amount 50.000		Recovery =	112.18%
6) S 2-Fluorobiphenyl (SURR)	8.330	3290808	51.887 ug/ml
Spiked Amount 50.000 Range 0 - 131		Recovery =	103.77%
11) S ortho-Terphenyl (SURR)	11.381	2833072	28.230 ug/ml
Spiked Amount 50.000		Recovery =	56.46%

Target Compounds

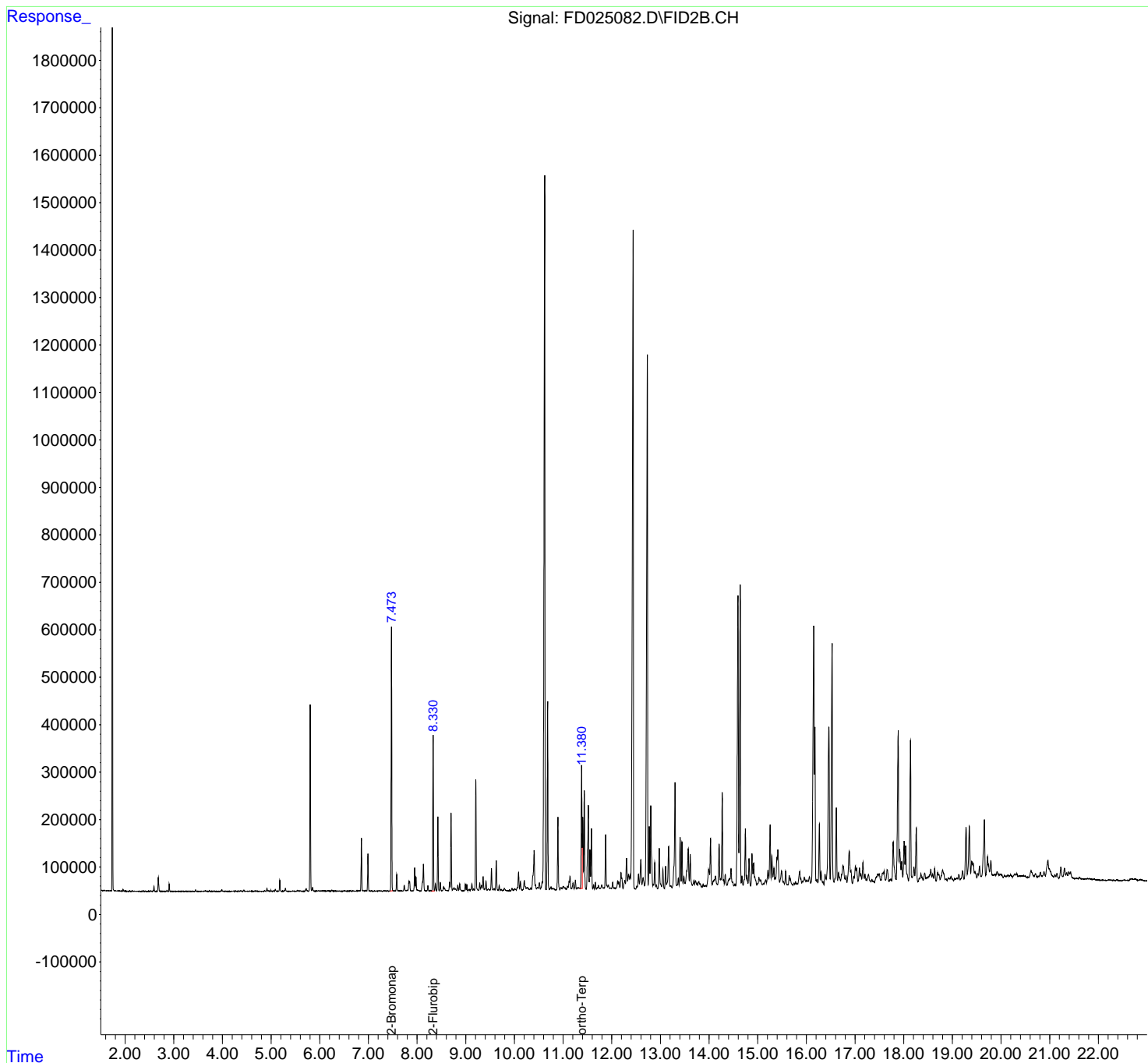
(f)=RT Delta > 1/2 Window

(m)=manual int.

Data Path : Z:\pestpcbsrv\HPCHEM1\FID_D\Data\FD071718AR\
Data File : FD025082.D
Signal(s) : FID2B.CH
Acq On : 17 Jul 2018 22:11
Operator : AJ\SJ
Sample : J4016-11
Misc :
ALS Vial : 60 Sample Multiplier: 1

Integration File: autoint1.e
Quant Time: Jul 18 05:19:33 2018
Quant Method : Z:\pestpcbsrv\HPCHEM1\FID_D\methods\Aromatic EPH 062118.M
Quant Title : GC Extractables
QLast Update : Fri Jun 22 09:02:19 2018
Response via : Initial Calibration
Integrator: ChemStation 6890 Scale Mode: Large solvent peaks clipped

Volume Inj. : 1 µl
Signal Phase : Rxi-1ms
Signal Info : 20M x 0.18mm x 0.18µm



2-Bromonap
2-Fluorobip
ortho-Terp