

Data Path : Z:\pestpcbsrv\HPCHEM1\FID C\Data\FC071818AL\
Data File : FC035474.D
Signal(s) : FID1A.CH
Acq On : 19 Jul 2018 7:17
Operator : AJ\SJ
Sample : J4030-14D
Misc :
ALS Vial : 22 Sample Multiplier: 1

Integration File: autoint1.e
Quant Time: Jul 19 08:37:28 2018
Quant Method : Z:\PESTPCBSRV\HPCHEM1\FID_C\Method\Alaphatic EPH 062518.M
Quant Title : GC Extractables
QLast Update : Mon Jun 25 14:27:40 2018
Response via : Initial Calibration
Integrator: ChemStation 6890 Scale Mode: Large solvent peaks clipped

Volume Inj. : 1 ul
Signal Phase : Rxi-lms
Signal Info : 20M x 0.18mm x 0.18um

Compound	R.T.	Response	Conc Units

System Monitoring Compounds			
12) S 1-chlorooctadecane (S...	12.885	1946433	24.317 ug/ml
Spiked Amount	50.000	Recovery =	48.63%

Target Compounds

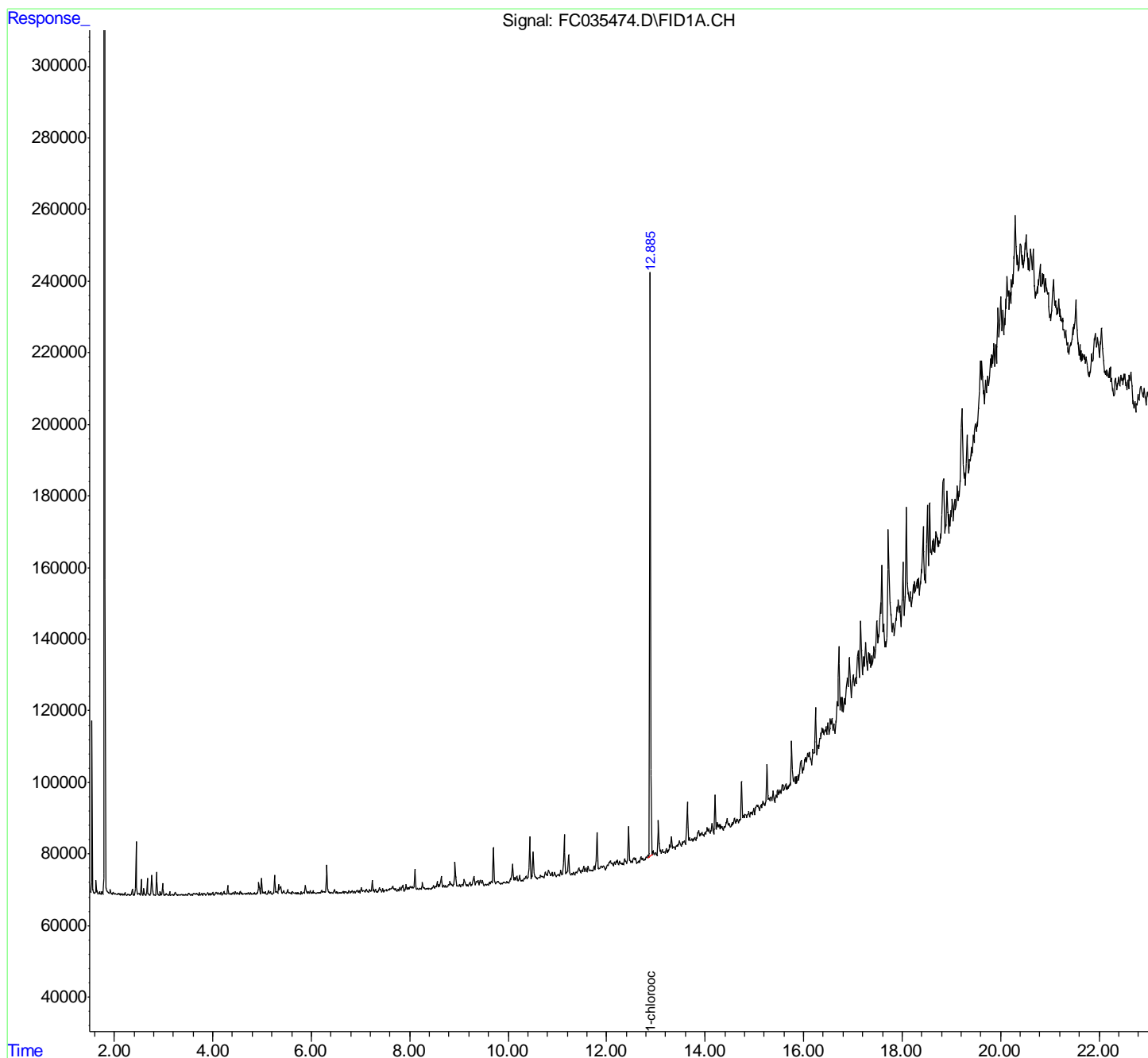
(f)=RT Delta > 1/2 Window

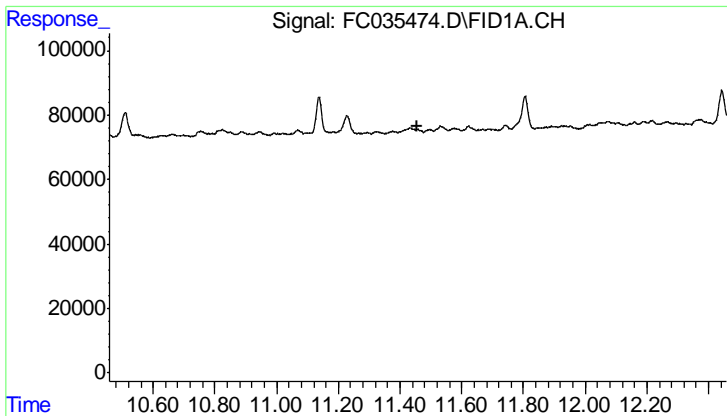
(m)=manual int.

Data Path : Z:\pestpcbsrv\HPCHEM1\FID C\Data\FC071818AL\
 Data File : FC035474.D
 Signal(s) : FID1A.CH
 Acq On : 19 Jul 2018 7:17
 Operator : AJ\SJ
 Sample : J4030-14D
 Misc :
 ALS Vial : 22 Sample Multiplier: 1

Integration File: autoint1.e
 Quant Time: Jul 19 08:37:28 2018
 Quant Method : Z:\PESTPCBSRV\HPCHEM1\FID_C\Method\Alaphatic EPH 062518.M
 Quant Title : GC Extractables
 QLast Update : Mon Jun 25 14:27:40 2018
 Response via : Initial Calibration
 Integrator: ChemStation 6890 Scale Mode: Large solvent peaks clipped

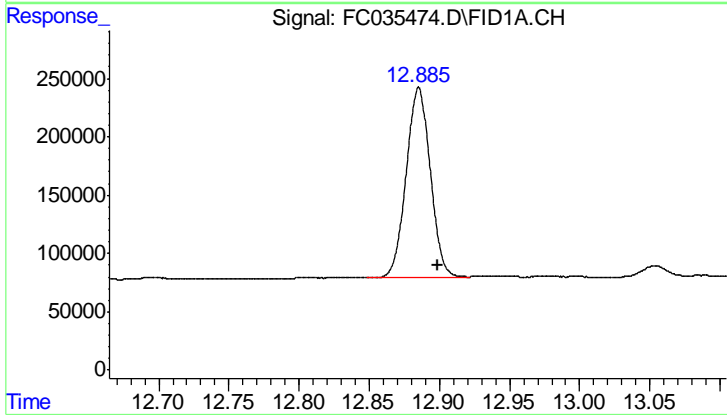
Volume Inj. : 1 ul
 Signal Phase : Rxi-lms
 Signal Info : 20M x 0.18mm x 0.18um





#9 ortho-Terphenyl (SURR)

R.T.: 0.000 min
Exp R.T.: 11.458 min
Response: 0
Conc: N.D.



#12 1-chlorooctadecane (SURR)

R.T.: 12.885 min
Delta R.T.: -0.013 min
Response: 1946433
Conc: 24.32 ug/ml