

Data Path : Z:\pestpcbsrv\HPCHEM1\FID_D\Data\FD071819AR\
 Data File : FD029796.D
 Signal(s) : FID2B.CH
 Acq On : 18 Jul 2019 14:39
 Operator : DD\AJ
 Sample : K3820-01
 Misc :
 ALS Vial : 53 Sample Multiplier: 1

Integration File: autoint1.e
 Quant Time: Jul 19 01:36:42 2019
 Quant Method : Z:\pestpcbsrv\HPCHEM1\FID_D\methods\Aromatic EPH 071019.M
 Quant Title : GC Extractables
 QLast Update : Wed Jul 10 13:31:52 2019
 Response via : Initial Calibration
 Integrator: ChemStation 6890 Scale Mode: Large solvent peaks clipped

Volume Inj. : 1 µl
 Signal Phase : Rxi-1ms
 Signal Info : 20M x 0.18mm x 0.18µm

| Compound | R.T. | Response | Conc Units |
|-------------------------------|----------------------|----------|--------------|
| System Monitoring Compounds | | | |
| 4) S 2-Bromonaphthalene (S... | 7.692 | 7695615 | 48.632 ug/ml |
| Spiked Amount | 50.000 | Recovery | = 97.26% |
| 6) S 2-Fluorobiphenyl (SURR) | 8.555 | 4892409 | 45.546 ug/ml |
| Spiked Amount | 50.000 Range 0 - 131 | Recovery | = 91.09% |
| 11) S ortho-Terphenyl (SURR) | 11.588 | 3629622 | 21.387 ug/ml |
| Spiked Amount | 50.000 | Recovery | = 42.77% |

Target Compounds

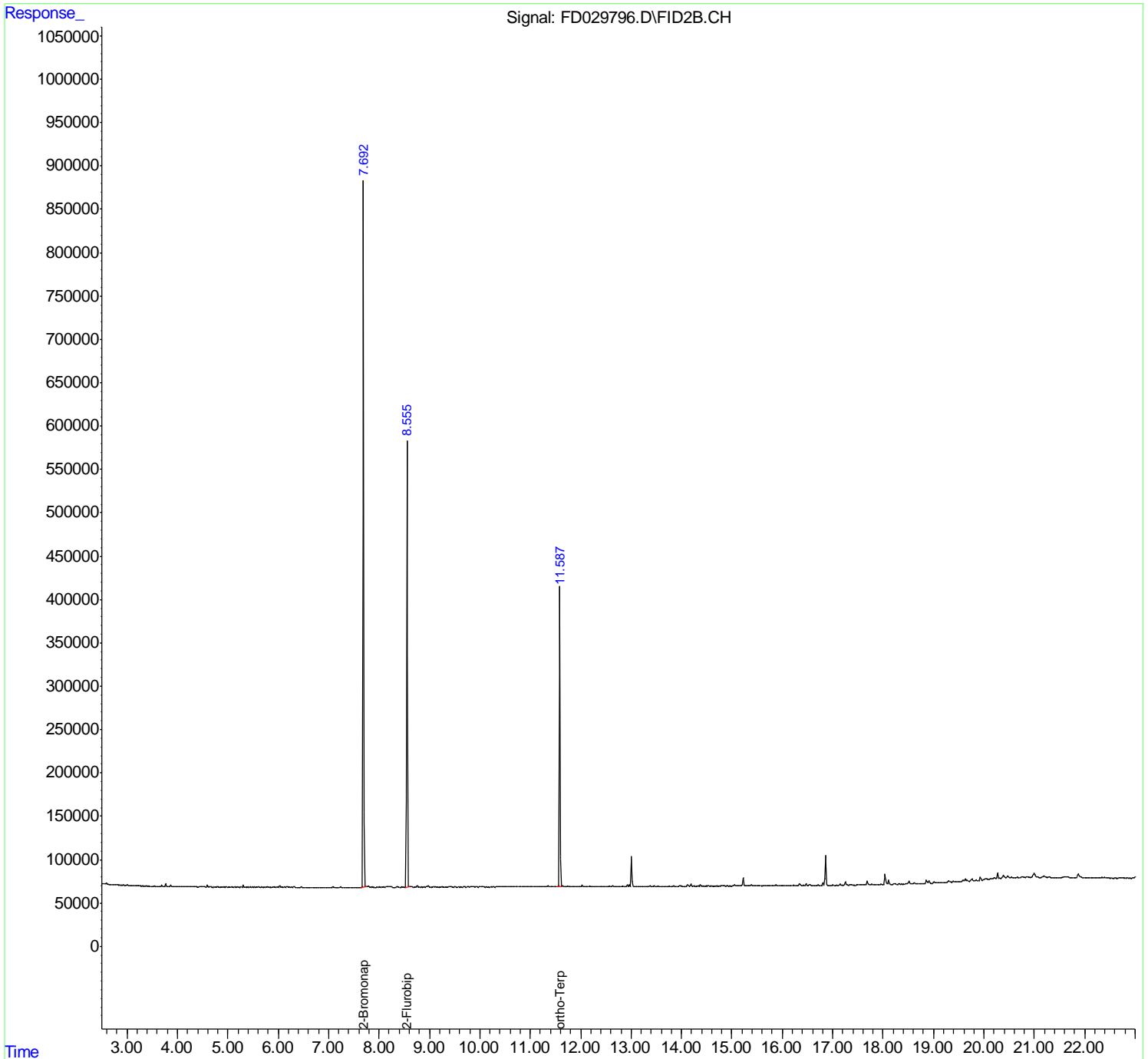
(f)=RT Delta > 1/2 Window

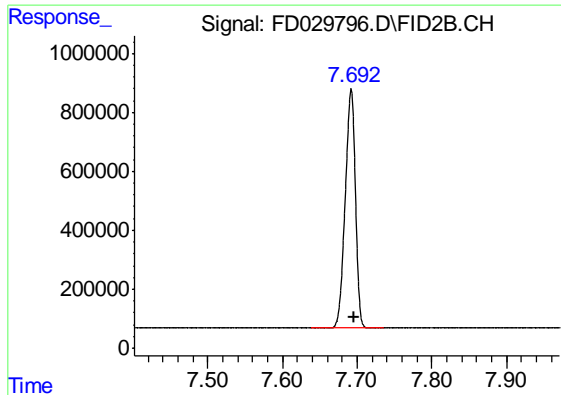
(m)=manual int.

Data Path : Z:\pestpcbsrv\HPCHEM1\FID_D\Data\FD071819AR\
Data File : FD029796.D
Signal(s) : FID2B.CH
Acq On : 18 Jul 2019 14:39
Operator : DD\AJ
Sample : K3820-01
Misc :
ALS Vial : 53 Sample Multiplier: 1

Integration File: autoint1.e
Quant Time: Jul 19 01:36:42 2019
Quant Method : Z:\pestpcbsrv\HPCHEM1\FID_D\methods\Aromatic EPH 071019.M
Quant Title : GC Extractables
QLast Update : Wed Jul 10 13:31:52 2019
Response via : Initial Calibration
Integrator: ChemStation 6890 Scale Mode: Large solvent peaks clipped

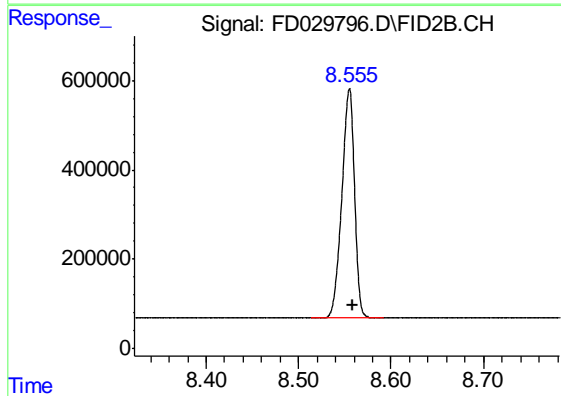
Volume Inj. : 1 µl
Signal Phase : Rxi-1ms
Signal Info : 20M x 0.18mm x 0.18µm





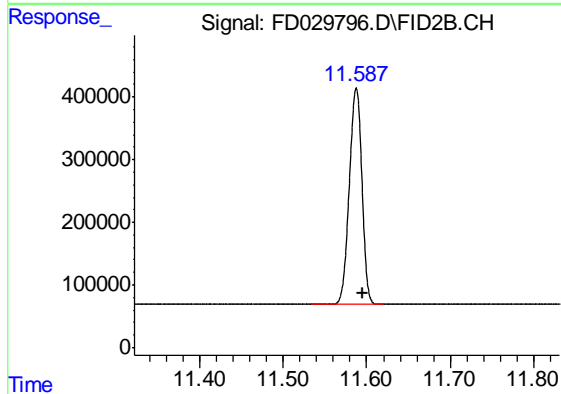
#4 2-Bromonaphthalene (SURR)

R.T.: 7.692 min
Delta R.T.: -0.004 min
Response: 7695615
Conc: 48.63 ug/ml



#6 2-Fluorobiphenyl (SURR)

R.T.: 8.555 min
Delta R.T.: -0.003 min
Response: 4892409
Conc: 45.55 ug/ml



#11 ortho-Terphenyl (SURR)

R.T.: 11.588 min
Delta R.T.: -0.007 min
Response: 3629622
Conc: 21.39 ug/ml