

Data Path : Z:\pestpcbsrv\HPCHEM1\FID_D\Data\FD072020AR\
 Data File : FD034034.D
 Signal(s) : FID2B.CH
 Acq On : 20 Jul 2020 11:58
 Operator : DD\AJ
 Sample : PB130245BS
 Misc :
 ALS Vial : 54 Sample Multiplier: 1

Integration File: sample.E
 Quant Time: Jul 21 01:38:03 2020
 Quant Method : Z:\pestpcbsrv\HPCHEM1\FID_D\methods\Aromatic EPH 070820.M
 Quant Title : GC Extractables
 QLast Update : Wed Jul 08 06:32:19 2020
 Response via : Initial Calibration
 Integrator: ChemStation 6890 Scale Mode: Large solvent peaks clipped

Volume Inj. : 1 µl
 Signal Phase : Rxi-1ms
 Signal Info : 20M x 0.18mm x 0.18µm

Compound	R.T.	Response	Conc Units

System Monitoring Compounds			
4) S 2-Bromonaphthalene (S...	7.712	5672326	47.226 ug/ml
Spiked Amount 50.000		Recovery =	94.45%
6) S 2-Fluorobiphenyl (SURR)	8.578	3987155	47.041 ug/ml
Spiked Amount 50.000 Range 0 - 131		Recovery =	94.08%
11) S ortho-Terphenyl (SURR)	11.620	5937161	43.883 ug/ml
Spiked Amount 50.000		Recovery =	87.77%
Target Compounds			
1) T 1,2,3-Trimethylbenzen...	4.504	4642689	35.152 ug/ml
2) T Naphthalene (C11.7)	6.048	5345614	38.593 ug/ml
3) T 2-Methylnaphthalene (...)	7.102	5577086	40.046 ug/ml
5) T Acenaphthylene (C15.06)	8.380	5296485	39.396 ug/ml
7) T Acenaphthene (C15.5)	8.677	5566745	40.671 ug/ml
8) T Fluorene (C16.55)	9.458	5681084	42.253 ug/ml
9) T Phenanthrene (C19.36)	10.856	5559427	41.600 ug/ml
10) T Anthracene (C19.43)	10.931	5510709	41.529 ug/ml
12) T Fluoranthene (C21.85)	12.668	5387112	40.548 ug/ml
13) T Pyrene (C20.8)	12.966	5173934	39.911 ug/ml
14) T Benzo[a]anthracene (C...	14.835	4714791	37.873 ug/ml
15) T Chrysene (C27.41)	14.880	5557907	44.755 ug/ml
16) T benzo[b]fluoranthene ...	16.385	4782868	40.201 ug/ml
17) T Bnezo[k]fluoranthene ...	16.419	4532233	39.114 ug/mlm
18) T Benzo[a]pyrene (C31.34)	16.763	4189038	35.998 ug/ml
19) T Indeno[1,2,3-cd]pyren...	18.127	4504372	40.455 ug/ml
20) T Dibenz[a,h]anthracene...	18.166	4360717	39.468 ug/ml
21) T Benzo[g,h,i]perylene ...	18.386	4440082	40.207 ug/ml

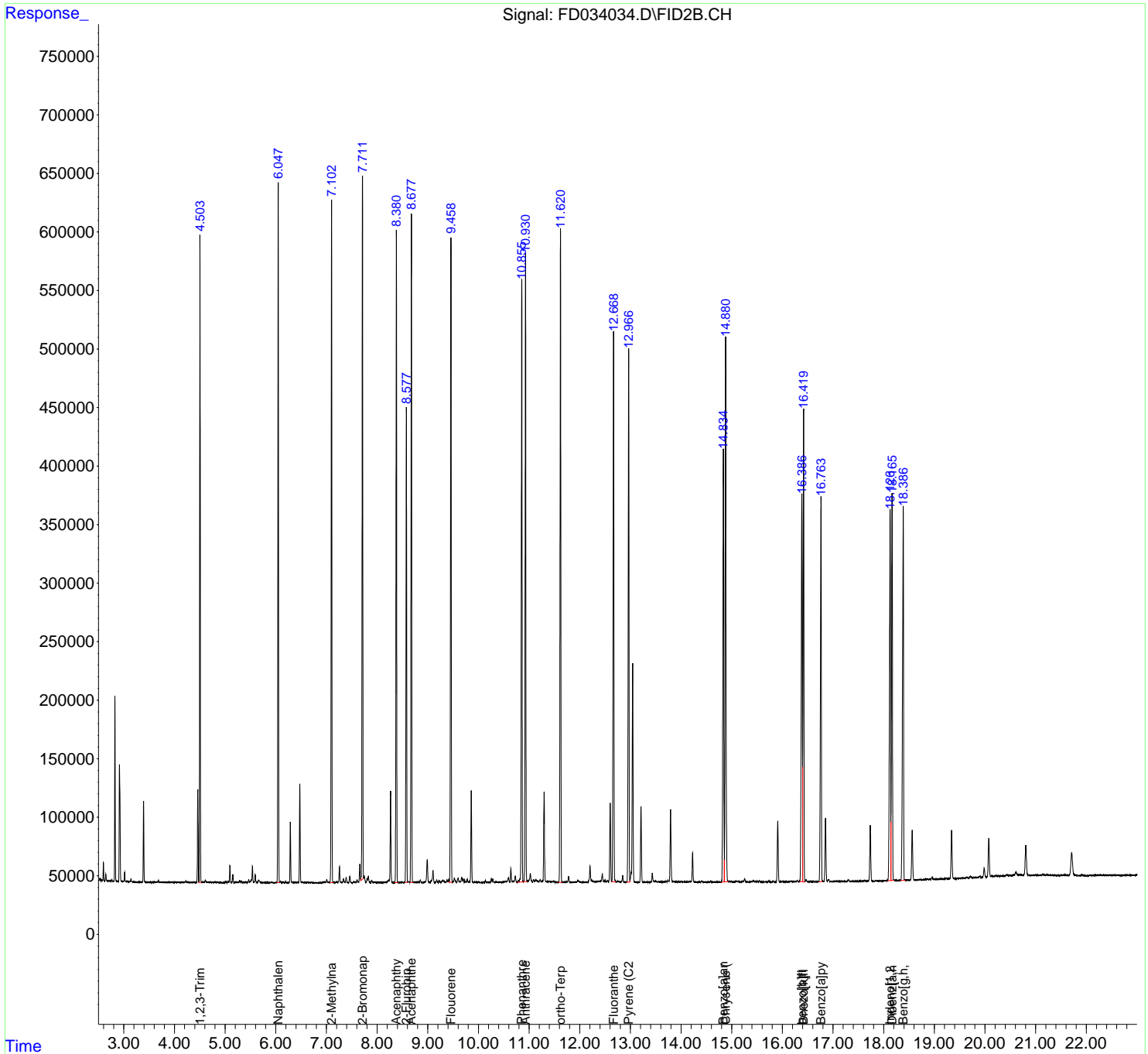
(f)=RT Delta > 1/2 Window

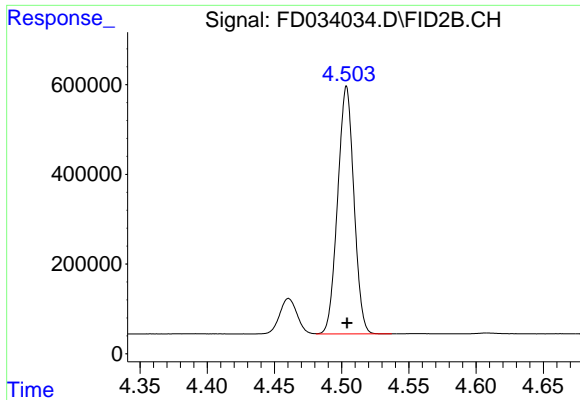
(m)=manual int.

Data Path : Z:\pestpcbsrv\HPCHEM1\FID_D\Data\FD072020AR\
 Data File : FD034034.D
 Signal(s) : FID2B.CH
 Acq On : 20 Jul 2020 11:58
 Operator : DD\AJ
 Sample : PB130245BS
 Misc :
 ALS Vial : 54 Sample Multiplier: 1

Integration File: sample.E
 Quant Time: Jul 21 01:38:03 2020
 Quant Method : Z:\pestpcbsrv\HPCHEM1\FID_D\methods\Aromatic EPH 070820.M
 Quant Title : GC Extractables
 QLast Update : Wed Jul 08 06:32:19 2020
 Response via : Initial Calibration
 Integrator: ChemStation 6890 Scale Mode: Large solvent peaks clipped

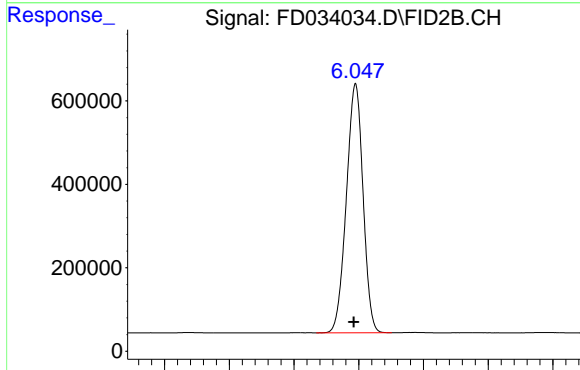
Volume Inj. : 1 µl
 Signal Phase : Rxi-1ms
 Signal Info : 20M x 0.18mm x 0.18µm





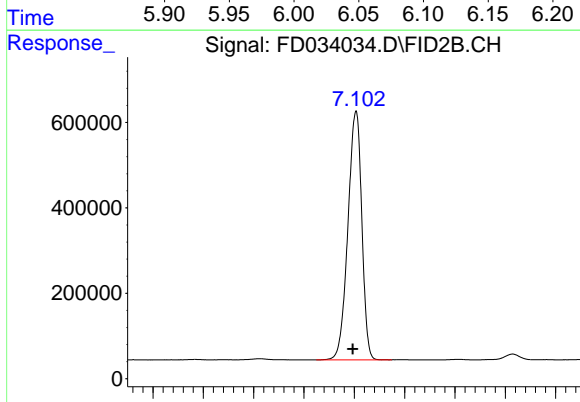
#1 1,2,3-Trimethylbenzene (C10.1)

R.T.: 4.504 min
Delta R.T.: 0.000 min
Response: 4642689
Conc: 35.15 ug/ml



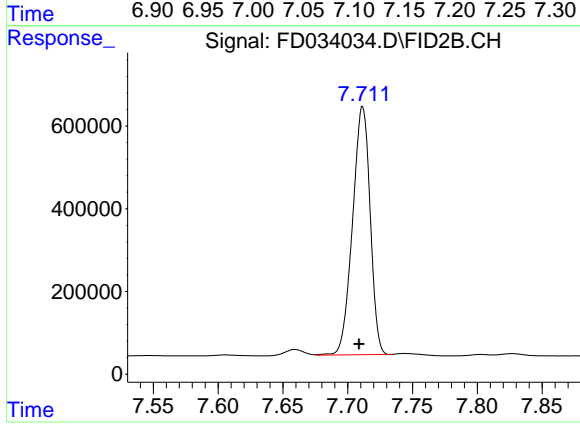
#2 Naphthalene (C11.7)

R.T.: 6.048 min
Delta R.T.: 0.002 min
Response: 5345614
Conc: 38.59 ug/ml



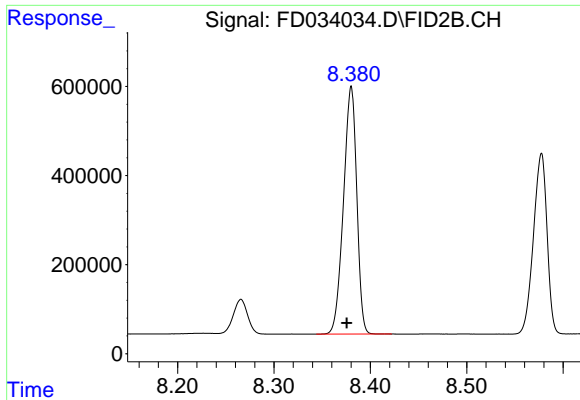
#3 2-Methylnaphthalene (C12.89)

R.T.: 7.102 min
Delta R.T.: 0.003 min
Response: 5577086
Conc: 40.05 ug/ml



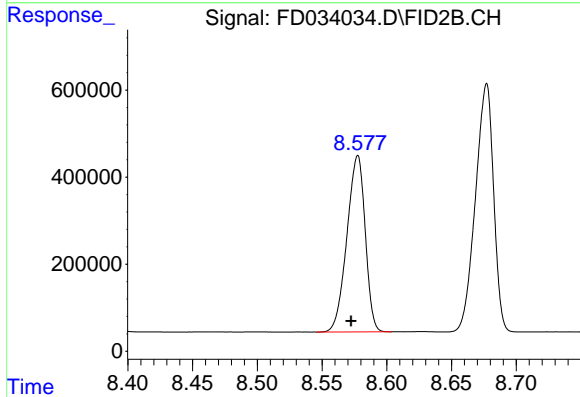
#4 2-Bromonaphthalene (SURR)

R.T.: 7.712 min
Delta R.T.: 0.003 min
Response: 5672326
Conc: 47.23 ug/ml



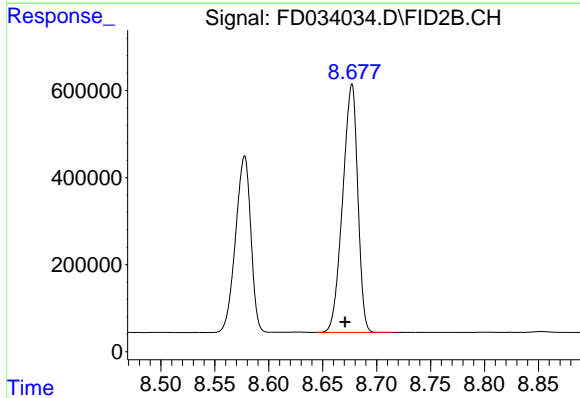
#5 Acenaphthylene (C15.06)

R.T.: 8.380 min
Delta R.T.: 0.005 min
Response: 5296485
Conc: 39.40 ug/ml



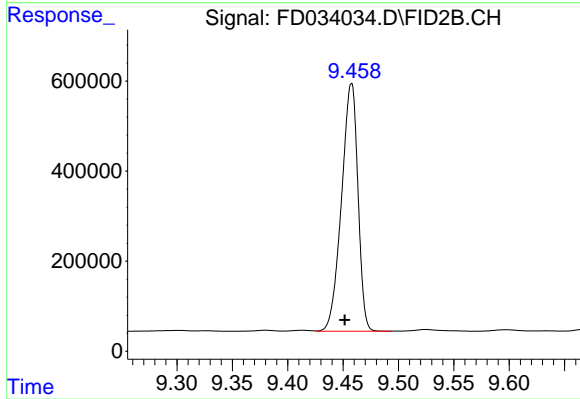
#6 2-Fluorobiphenyl (SURR)

R.T.: 8.578 min
Delta R.T.: 0.005 min
Response: 3987155
Conc: 47.04 ug/ml



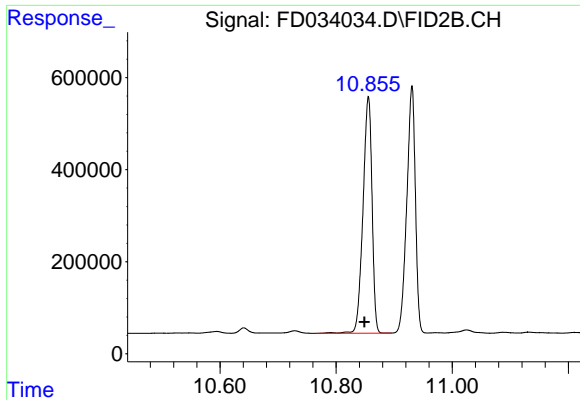
#7 Acenaphthene (C15.5)

R.T.: 8.677 min
Delta R.T.: 0.006 min
Response: 5566745
Conc: 40.67 ug/ml



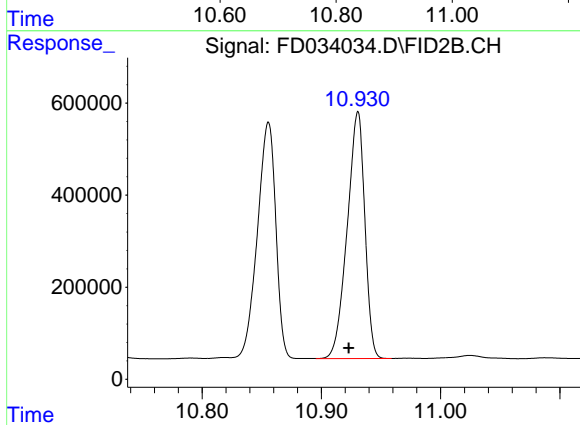
#8 Fluorene (C16.55)

R.T.: 9.458 min
Delta R.T.: 0.006 min
Response: 5681084
Conc: 42.25 ug/ml



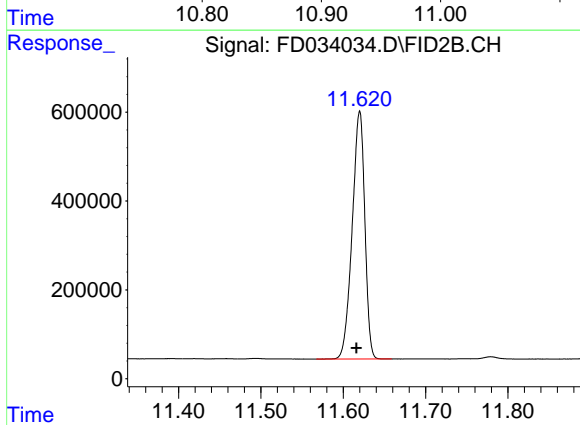
#9 Phenanthrene (C19.36)

R.T.: 10.856 min
Delta R.T.: 0.007 min
Response: 5559427
Conc: 41.60 ug/ml



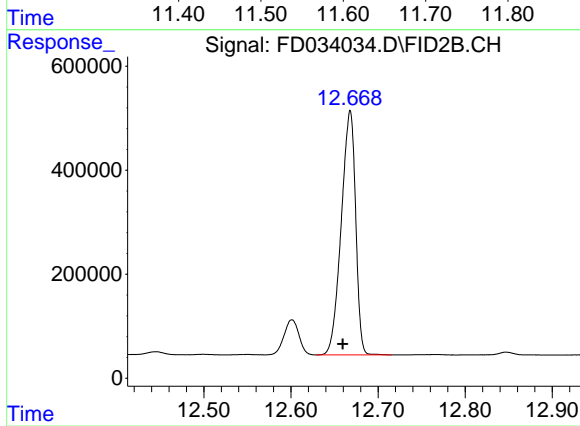
#10 Anthracene (C19.43)

R.T.: 10.931 min
Delta R.T.: 0.008 min
Response: 5510709
Conc: 41.53 ug/ml



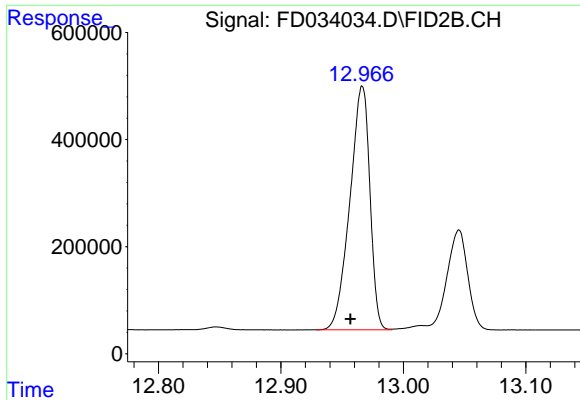
#11 ortho-Terphenyl (SURR)

R.T.: 11.620 min
Delta R.T.: 0.004 min
Response: 5937161
Conc: 43.88 ug/ml



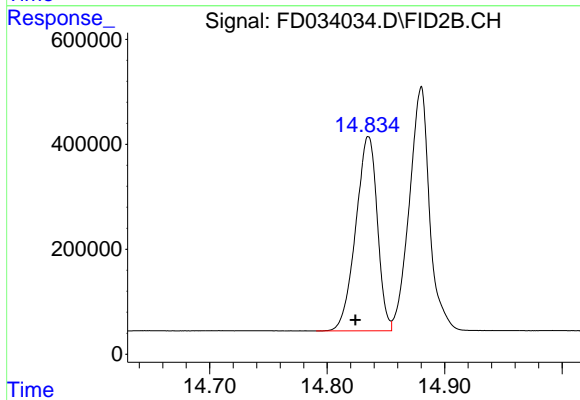
#12 Fluoranthene (C21.85)

R.T.: 12.668 min
Delta R.T.: 0.008 min
Response: 5387112
Conc: 40.55 ug/ml



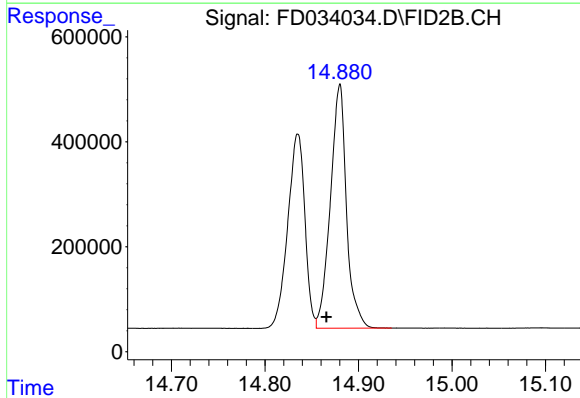
#13 Pyrene (C20.8)

R.T.: 12.966 min
Delta R.T.: 0.010 min
Response: 5173934
Conc: 39.91 ug/ml



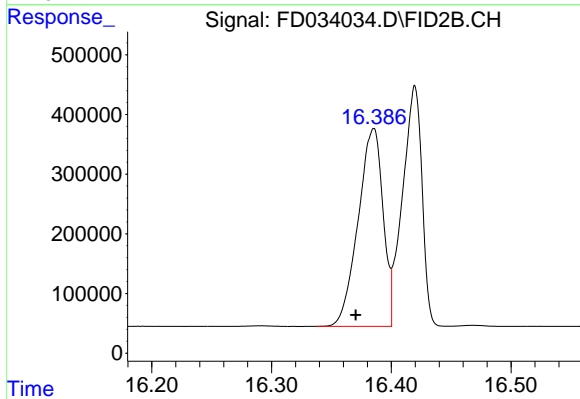
#14 Benzo[a]anthracene (C26.37)

R.T.: 14.835 min
Delta R.T.: 0.011 min
Response: 4714791
Conc: 37.87 ug/ml



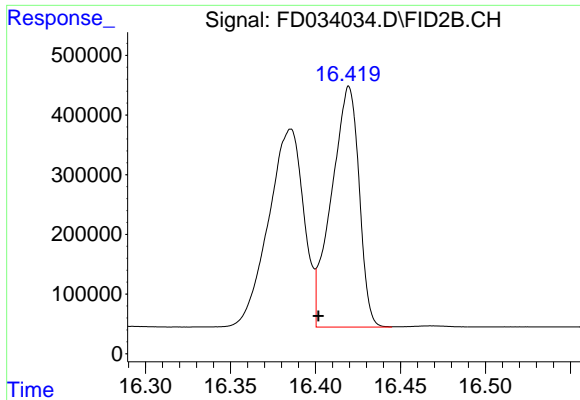
#15 Chrysene (C27.41)

R.T.: 14.880 min
Delta R.T.: 0.014 min
Response: 5557907
Conc: 44.76 ug/ml



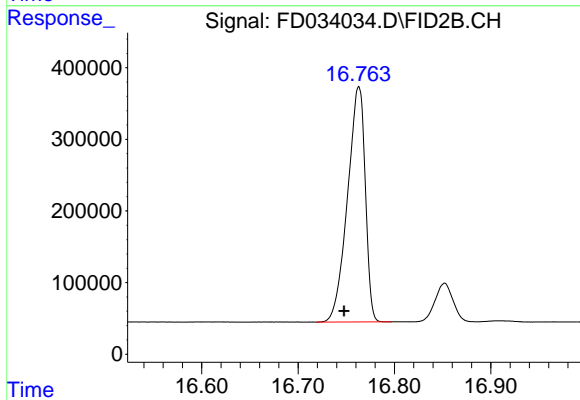
#16 benzo[b]fluoranthene (C30.41)

R.T.: 16.385 min
Delta R.T.: 0.015 min
Response: 4782868
Conc: 40.20 ug/ml



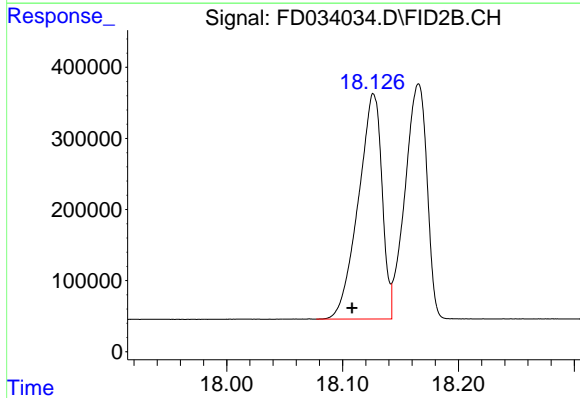
#17 Bnezo[k]fluoranthene (C30.14)

R.T.: 16.419 min
Delta R.T.: 0.017 min
Response: 4532233
Conc: 39.11 ug/ml m



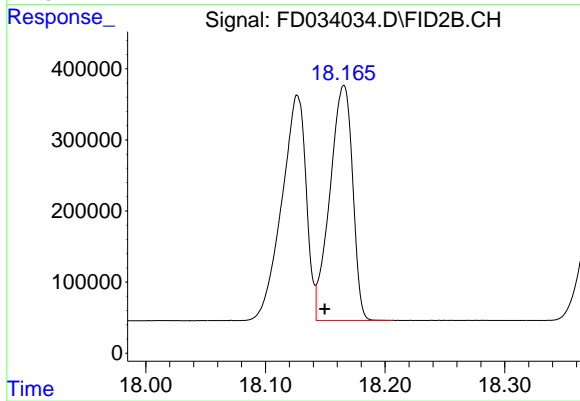
#18 Benzo[a]pyrene (C31.34)

R.T.: 16.763 min
Delta R.T.: 0.015 min
Response: 4189038
Conc: 36.00 ug/ml



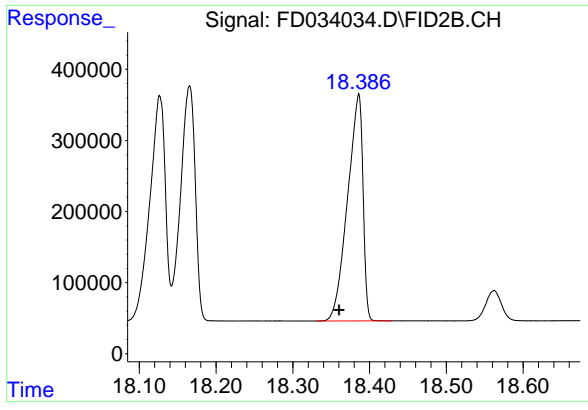
#19 Indeno[1,2,3-cd]pyrene (C35.01)

R.T.: 18.127 min
Delta R.T.: 0.018 min
Response: 4504372
Conc: 40.46 ug/ml



#20 Dibenz[a,h]anthracene (C30.36)

R.T.: 18.166 min
Delta R.T.: 0.016 min
Response: 4360717
Conc: 39.47 ug/ml



#21 Benzo[g,h,i]perylene (C34.01)

R.T.: 18.386 min
Delta R.T.: 0.025 min
Response: 4440082
Conc: 40.21 ug/ml