

Data Path : Z:\pestpcbsrv\HPCHEM1\FID_D\Data\FD072519AR\
 Data File : FD029838.D
 Signal(s) : FID2B.CH
 Acq On : 25 Jul 2019 9:06
 Operator : DD\AJ
 Sample : 20 PPM AROMATIC HC STD
 Misc :
 ALS Vial : 52 Sample Multiplier: 1

Integration File: autoint1.e
 Quant Time: Jul 26 01:02:56 2019
 Quant Method : Z:\pestpcbsrv\HPCHEM1\FID_D\methods\Aromatic EPH 071019.M
 Quant Title : GC Extractables
 QLast Update : Wed Jul 10 13:31:52 2019
 Response via : Initial Calibration
 Integrator: ChemStation 6890 Scale Mode: Large solvent peaks clipped

Volume Inj. : 1 µl
 Signal Phase : Rxi-1ms
 Signal Info : 20M x 0.18mm x 0.18µm

Compound	R.T.	Response	Conc Units

System Monitoring Compounds			
4) S 2-Bromonaphthalene (S...	7.684	3252184	20.552 ug/ml
Spiked Amount 50.000		Recovery =	41.10%
6) S 2-Fluorobiphenyl (SURR)	8.546	2173793	20.237 ug/ml
Spiked Amount 50.000 Range 0 - 131		Recovery =	40.47%
11) S ortho-Terphenyl (SURR)	11.583	3342957	19.698 ug/ml
Spiked Amount 50.000		Recovery =	39.40%
Target Compounds			
1) T 1,2,3-Trimethylbenzen...	4.484	3528133	20.868 ug/ml
2) T Naphthalene (C11.7)	6.024	3712867	20.746 ug/ml
3) T 2-Methylnaphthalene (...)	7.075	3636850	20.615 ug/ml
5) T Acenaphthylene (C15.06)	8.350	3404718	20.112 ug/ml
7) T Acenaphthene (C15.5)	8.646	3575851	20.293 ug/ml
8) T Fluorene (C16.55)	9.425	3509545	20.085 ug/ml
9) T Phenanthrene (C19.36)	10.819	3411395	19.672 ug/ml
10) T Anthracene (C19.43)	10.894	3127576	18.498 ug/ml
12) T Fluoranthene (C21.85)	12.627	3241690	18.930 ug/ml
13) T Pyrene (C20.8)	12.924	3190817	18.757 ug/ml
14) T Benzo[a]anthracene (C...	14.788	2798302	17.950 ug/ml
15) T Chrysene (C27.41)	14.830	2817894	18.079 ug/ml
16) T benzo[b]fluoranthene ...	16.333	2655557	18.186 ug/ml
17) T Bnezo[k]fluoranthene ...	16.366	2616679	18.093 ug/ml
18) T Benzo[a]pyrene (C31.34)	16.710	2553629	18.211 ug/ml
19) T Indeno[1,2,3-cd]pyren...	18.070	2549528	20.012 ug/ml
20) T Dibenz[a,h]anthracene...	18.110	2595719	20.756 ug/ml
21) T Benzo[g,h,i]perylene ...	18.325	2563663	20.552 ug/ml

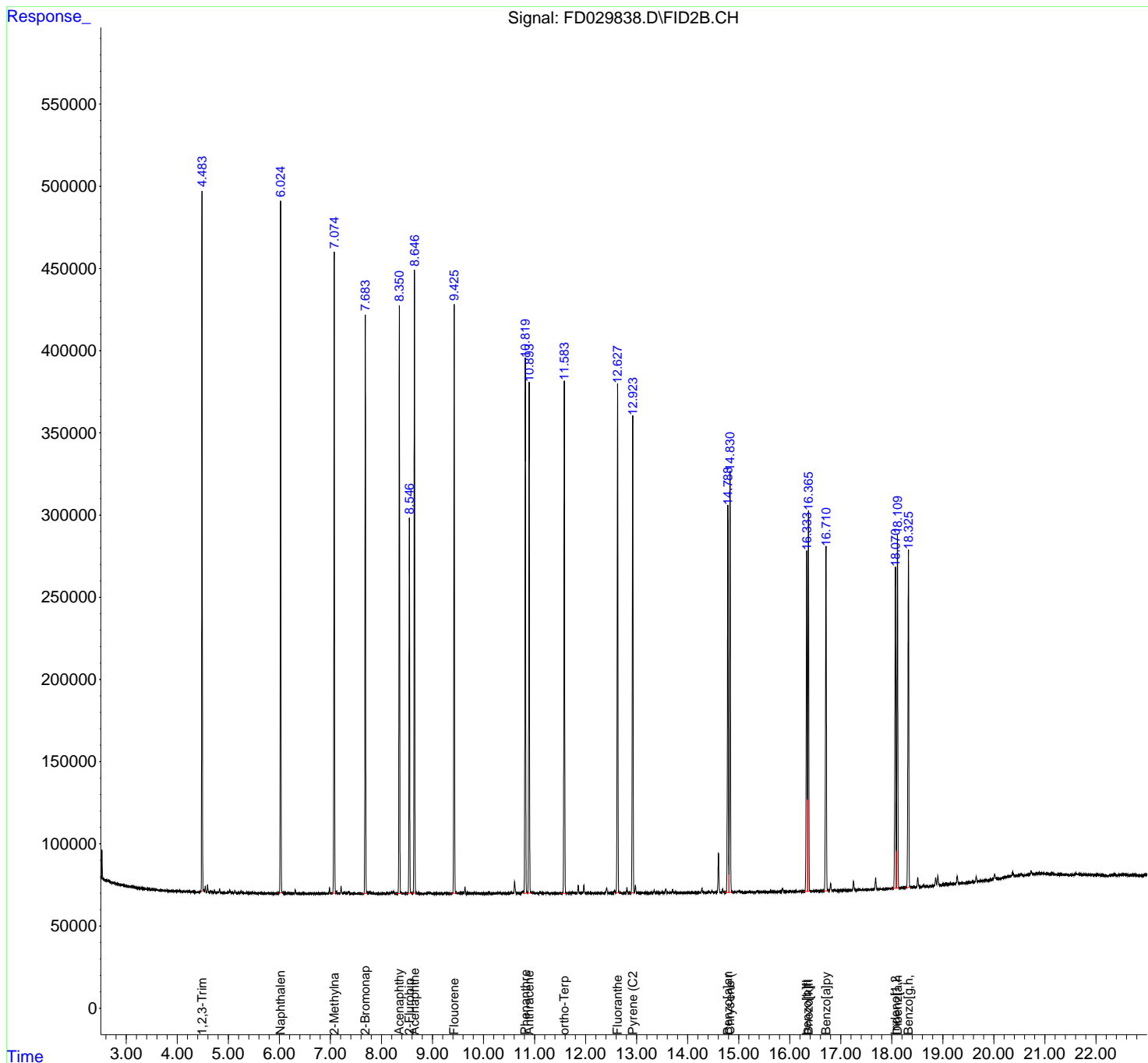
(f)=RT Delta > 1/2 Window

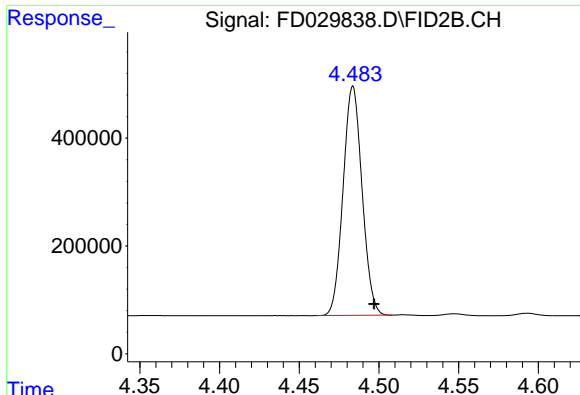
(m)=manual int.

Data Path : Z:\pestpcbsrv\HPCHEM1\FID_D\Data\FD072519AR\
 Data File : FD029838.D
 Signal(s) : FID2B.CH
 Acq On : 25 Jul 2019 9:06
 Operator : DD\AJ
 Sample : 20 PPM AROMATIC HC STD
 Misc :
 ALS Vial : 52 Sample Multiplier: 1

Integration File: autoint1.e
 Quant Time: Jul 26 01:02:56 2019
 Quant Method : Z:\pestpcbsrv\HPCHEM1\FID_D\methods\Aromatic EPH 071019.M
 Quant Title : GC Extractables
 QLast Update : Wed Jul 10 13:31:52 2019
 Response via : Initial Calibration
 Integrator: ChemStation 6890 Scale Mode: Large solvent peaks clipped

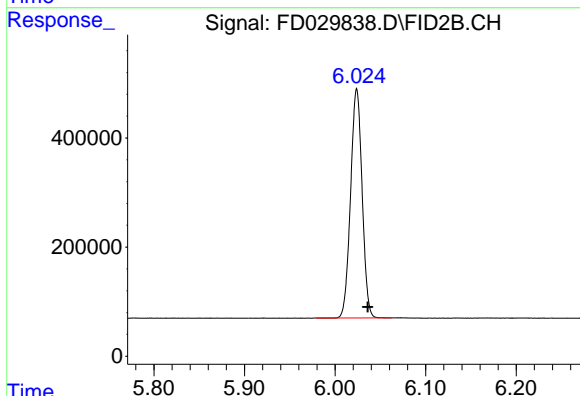
Volume Inj. : 1 µl
 Signal Phase : Rxi-1ms
 Signal Info : 20M x 0.18mm x 0.18µm





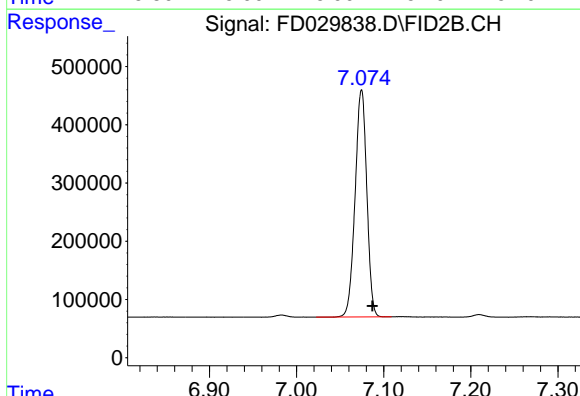
#1 1,2,3-Trimethylbenzene (C10.1)

R.T.: 4.484 min
Delta R.T.: -0.013 min
Response: 3528133
Conc: 20.87 ug/ml



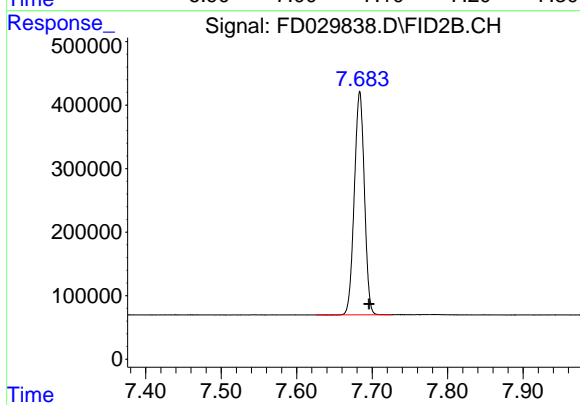
#2 Naphthalene (C11.7)

R.T.: 6.024 min
Delta R.T.: -0.012 min
Response: 3712867
Conc: 20.75 ug/ml



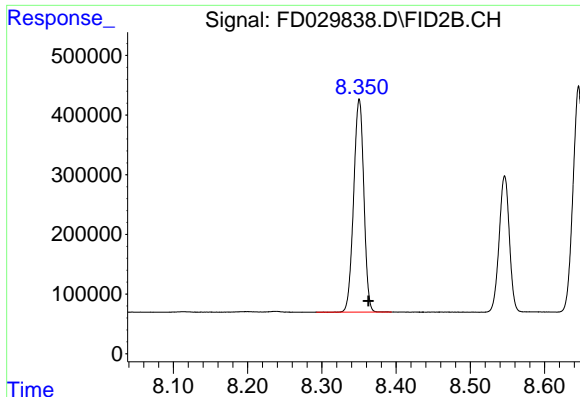
#3 2-Methylnaphthalene (C12.89)

R.T.: 7.075 min
Delta R.T.: -0.012 min
Response: 3636850
Conc: 20.62 ug/ml



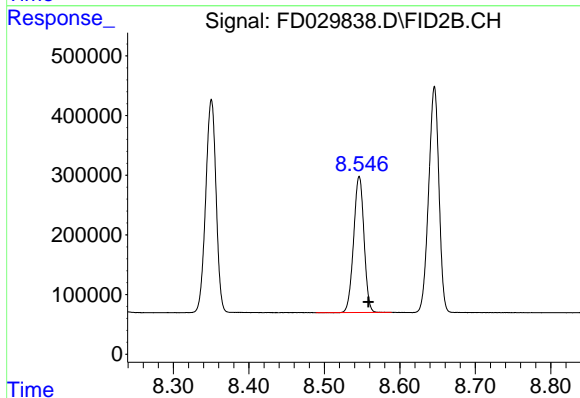
#4 2-Bromonaphthalene (SURR)

R.T.: 7.684 min
Delta R.T.: -0.012 min
Response: 3252184
Conc: 20.55 ug/ml



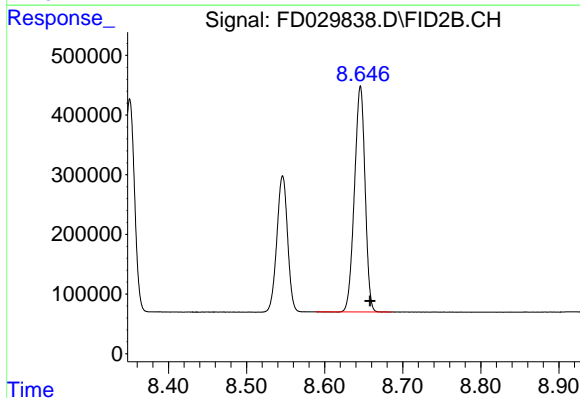
#5 Acenaphthylene (C15.06)

R.T.: 8.350 min
Delta R.T.: -0.012 min
Response: 3404718
Conc: 20.11 ug/ml



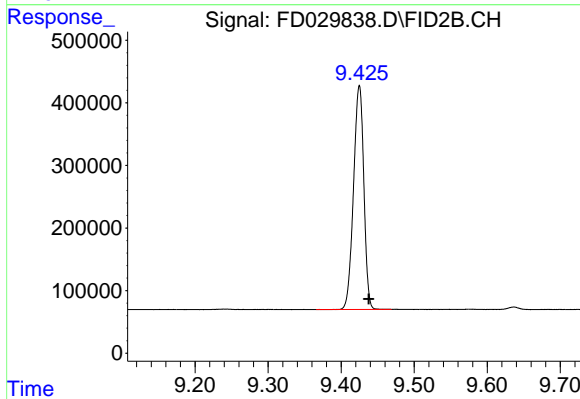
#6 2-Fluorobiphenyl (SURR)

R.T.: 8.546 min
Delta R.T.: -0.012 min
Response: 2173793
Conc: 20.24 ug/ml



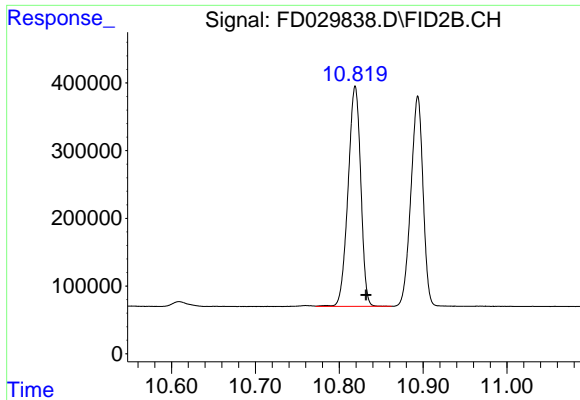
#7 Acenaphthene (C15.5)

R.T.: 8.646 min
Delta R.T.: -0.013 min
Response: 3575851
Conc: 20.29 ug/ml



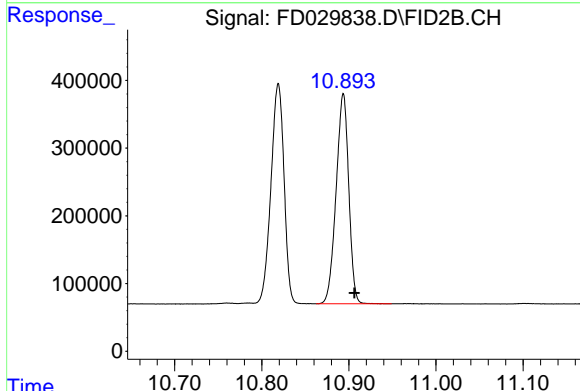
#8 Fluorene (C16.55)

R.T.: 9.425 min
Delta R.T.: -0.013 min
Response: 3509545
Conc: 20.09 ug/ml



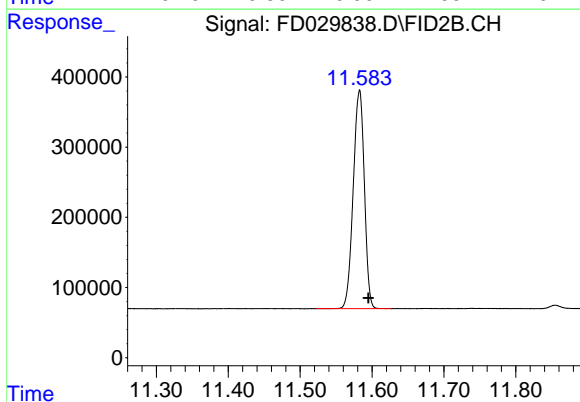
#9 Phenanthrene (C19.36)

R.T.: 10.819 min
Delta R.T.: -0.013 min
Response: 3411395
Conc: 19.67 ug/ml



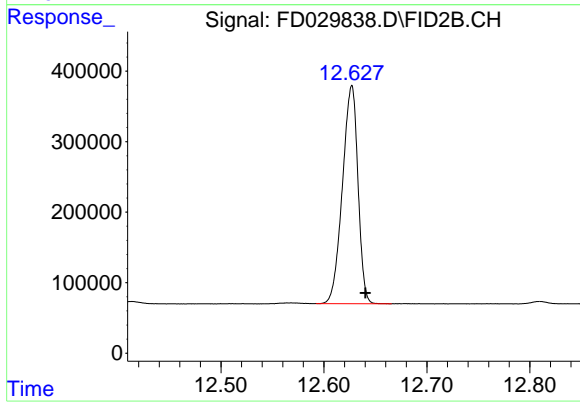
#10 Anthracene (C19.43)

R.T.: 10.894 min
Delta R.T.: -0.013 min
Response: 3127576
Conc: 18.50 ug/ml



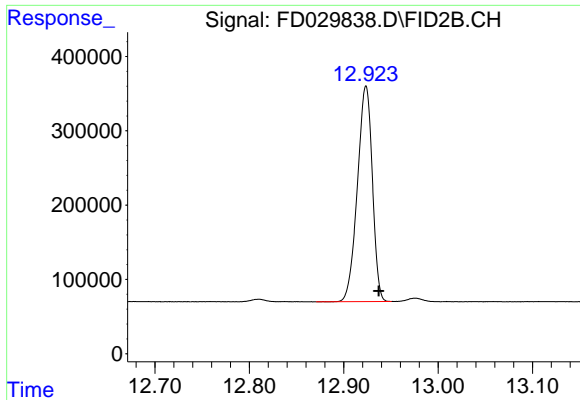
#11 ortho-Terphenyl (SURR)

R.T.: 11.583 min
Delta R.T.: -0.012 min
Response: 3342957
Conc: 19.70 ug/ml



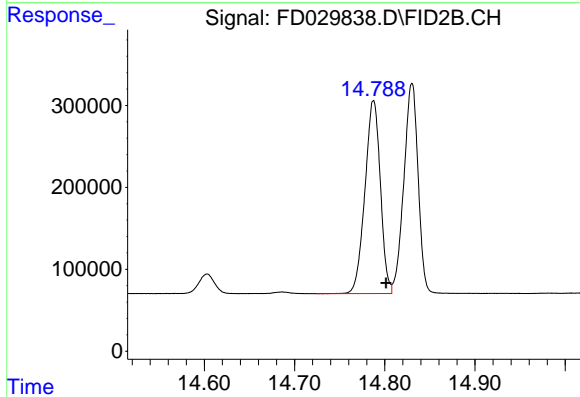
#12 Fluoranthene (C21.85)

R.T.: 12.627 min
Delta R.T.: -0.013 min
Response: 3241690
Conc: 18.93 ug/ml



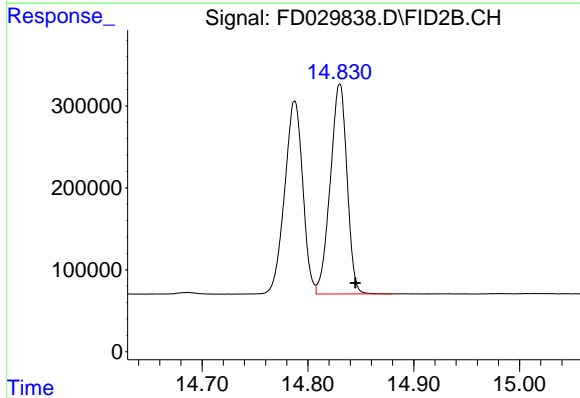
#13 Pyrene (C20.8)

R.T.: 12.924 min
Delta R.T.: -0.014 min
Response: 3190817
Conc: 18.76 ug/ml



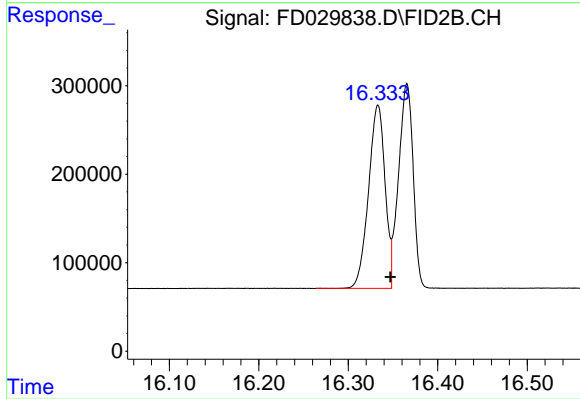
#14 Benzo[a]anthracene (C26.37)

R.T.: 14.788 min
Delta R.T.: -0.014 min
Response: 2798302
Conc: 17.95 ug/ml



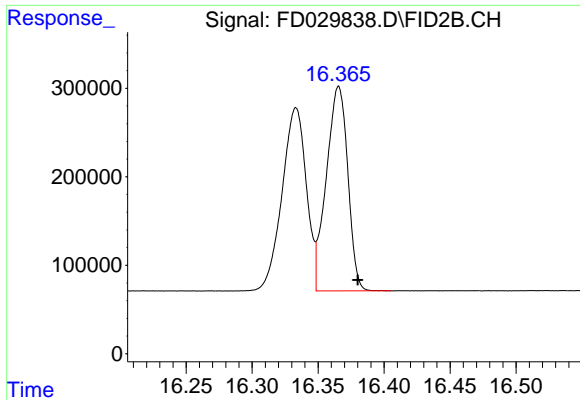
#15 Chrysene (C27.41)

R.T.: 14.830 min
Delta R.T.: -0.015 min
Response: 2817894
Conc: 18.08 ug/ml



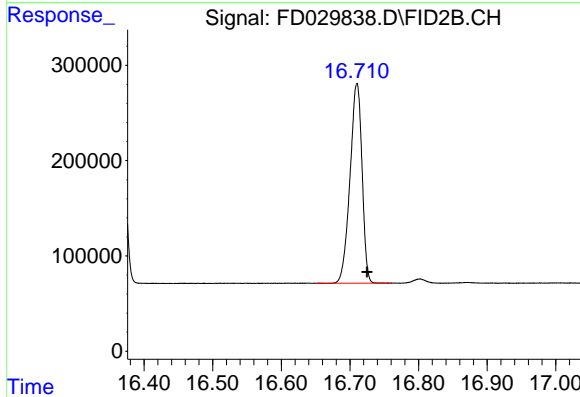
#16 benzo[b]fluoranthene (C30.41)

R.T.: 16.333 min
Delta R.T.: -0.014 min
Response: 2655557
Conc: 18.19 ug/ml



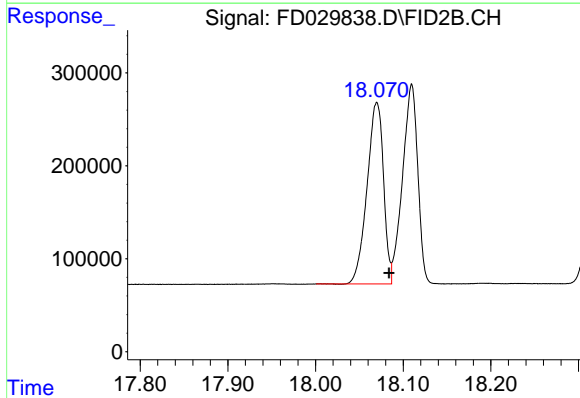
#17 Bnezo[k]fluoranthene (C30.14)

R.T.: 16.366 min
Delta R.T.: -0.014 min
Response: 2616679
Conc: 18.09 ug/ml



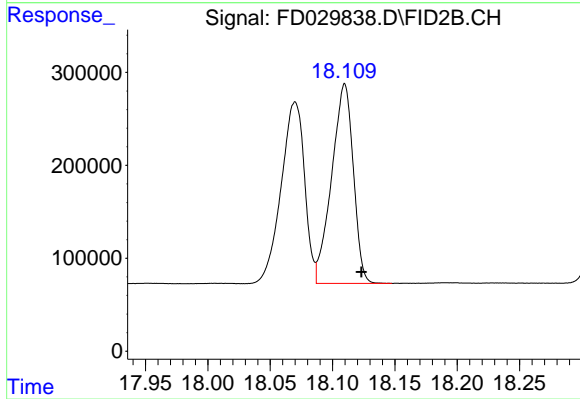
#18 Benzo[a]pyrene (C31.34)

R.T.: 16.710 min
Delta R.T.: -0.015 min
Response: 2553629
Conc: 18.21 ug/ml



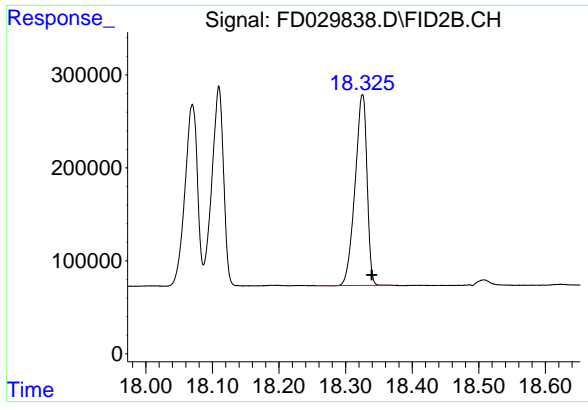
#19 Indeno[1,2,3-cd]pyrene (C35.01)

R.T.: 18.070 min
Delta R.T.: -0.014 min
Response: 2549528
Conc: 20.01 ug/ml



#20 Dibenz[a,h]anthracene (C30.36)

R.T.: 18.110 min
Delta R.T.: -0.014 min
Response: 2595719
Conc: 20.76 ug/ml



#21 Benzo[g,h,i]perylene (C34.01)

R.T.: 18.325 min
Delta R.T.: -0.014 min
Response: 2563663
Conc: 20.55 ug/ml