

Data Path : Z:\pestpcbsrv\HPCHEM1\FID_D\Data\FD072621AL\
 Data File : FD038342.D
 Signal(s) : FID2B.CH
 Acq On : 26 Jul 2021 13:35
 Operator : AJ\MA
 Sample : PB137935BS
 Misc :
 ALS Vial : 54 Sample Multiplier: 1

Instrument :
 FID_D
 ClientSampleId :
 PB137935BS

Integration File: autoint1.e
 Quant Time: Jul 27 02:20:33 2021
 Quant Method : Z:\pestpcbsrv\HPCHEM1\FID_D\methods\Alaphatic EPH 070621.M
 Quant Title : GC Extractables
 QLast Update : Wed Jul 07 10:58:41 2021
 Response via : Initial Calibration
 Integrator: ChemStation 6890 Scale Mode: Large solvent peaks clipped

Volume Inj. : 1 ul
 Signal Phase : Rxi-1ms
 Signal Info : 20M x 0.18mm x 0.18um

Compound	R.T.	Response	Conc Units

System Monitoring Compounds			
9) S ortho-Terphenyl (SURR)	11.404	4527941	31.324 ug/ml
Spiked Amount	50.000	Recovery	= 62.65%
12) S 1-chlorooctadecane (S...	12.839	3480894	30.531 ug/ml
Spiked Amount	50.000	Recovery	= 61.06%
Target Compounds			
1) T n-Nonane (C9)	3.243	5384615	44.312 ug/ml
2) T n-Decane (C10)	4.287	5593632	45.732 ug/ml
3) T A~Naphthalene (C11.7)	5.848	5792934	42.377 ug/ml
4) T n-Dodecane (C12)	6.284	5673940	45.555 ug/ml
5) T A~2-methylnaphthalene...	6.898	5402777	39.224 ug/ml
6) T n-Tetradecane (C14)	8.070	5583281	43.440 ug/ml
7) T n-Hexadecane (C16)	9.662	5424160	41.857 ug/ml
8) T n-Octadecane (C18)	11.097	5409911	40.171 ug/ml
10) T n-Eicosane (C20)	12.399	5047800	37.581 ug/ml
11) T n-Heneicosane (C21)	13.008	4935518	36.328 ug/ml
13) T n-Docosane (C22)	13.591	4794910	35.637 ug/ml
14) T n-Tetracosane (C24)	14.688	4480465	33.181 ug/ml
15) T n-Hexacosane (C26)	15.705	4396339	33.368 ug/ml
16) T n-Octacosane (C28)	16.648	4334823	33.245 ug/ml
17) T n-Tricontane (C30)	17.532	4180881	32.716 ug/ml
18) T n-Dotriacontane (C32)	18.359	4120852	33.490 ug/ml
19) T n-Tetratriacontane (C34)	19.138	4021992	34.346 ug/ml
20) T n-Hexatriacontane (C36)	19.875	3903622	35.745 ug/ml
21) T n-Octatriacontane (C38)	20.578	3723022	36.965 ug/ml
22) T n-Tetracontane (C40)	21.402	3823243	39.091 ug/ml

(f)=RT Delta > 1/2 Window

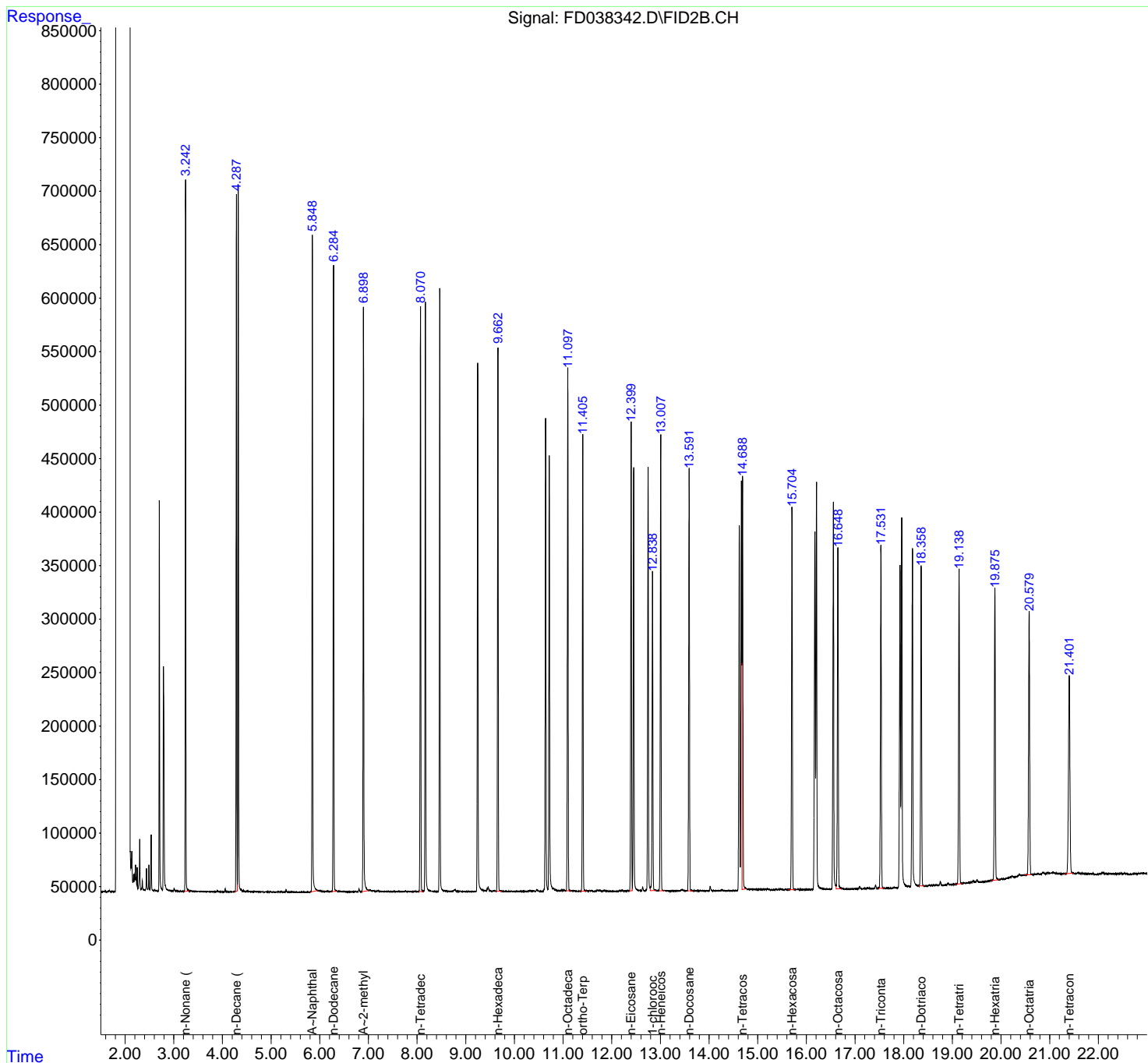
(m)=manual int.

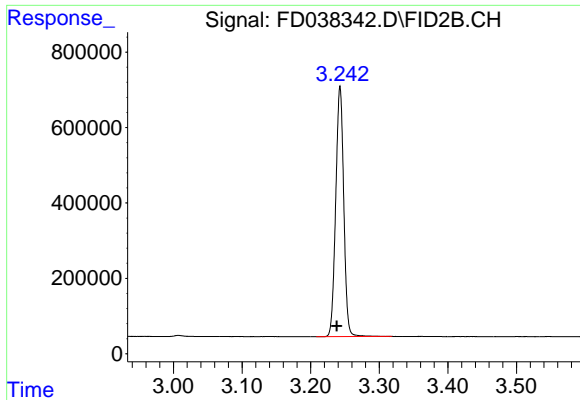
Data Path : Z:\pestpcbsrv\HPCHEM1\FID_D\Data\FD072621AL\
 Data File : FD038342.D
 Signal(s) : FID2B.CH
 Acq On : 26 Jul 2021 13:35
 Operator : AJ\MA
 Sample : PB137935BS
 Misc :
 ALS Vial : 54 Sample Multiplier: 1

Instrument :
 FID_D
 ClientSampled :
 PB137935BS

Integration File: autoint1.e
 Quant Time: Jul 27 02:20:33 2021
 Quant Method : Z:\pestpcbsrv\HPCHEM1\FID_D\methods\Alaphatic EPH 070621.M
 Quant Title : GC Extractables
 QLast Update : Wed Jul 07 10:58:41 2021
 Response via : Initial Calibration
 Integrator: ChemStation 6890 Scale Mode: Large solvent peaks clipped

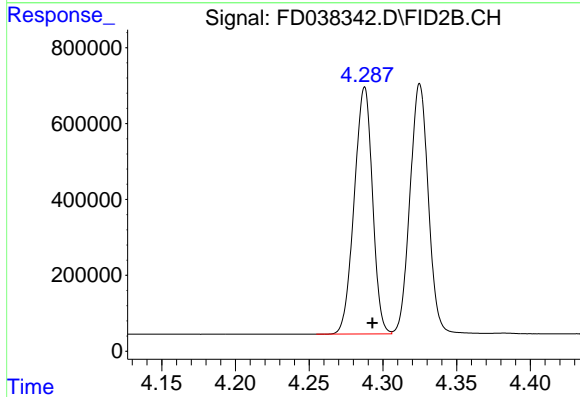
Volume Inj. : 1 ul
 Signal Phase : Rxi-1ms
 Signal Info : 20M x 0.18mm x 0.18um



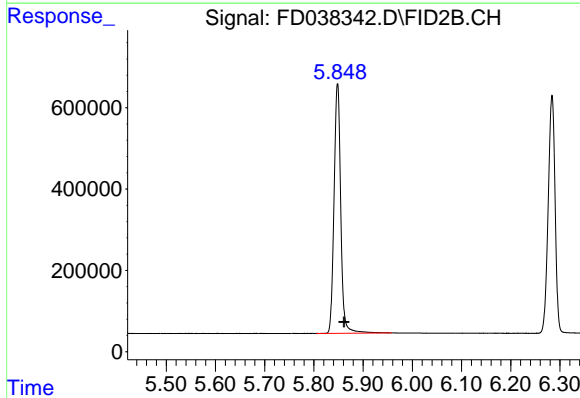


#1 n-Nonane (C9)
 R.T.: 3.243 min
 Delta R.T.: 0.005 min
 Response: 5384615
 Conc: 44.31 ug/ml

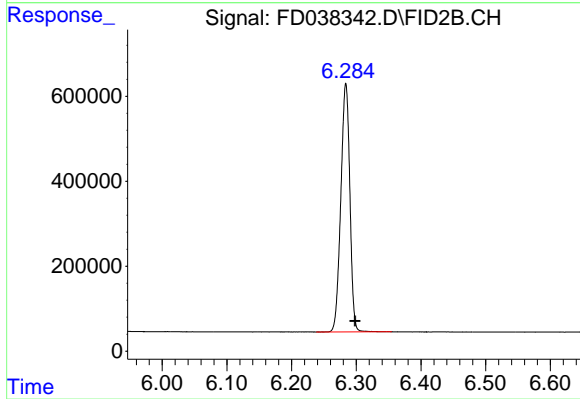
Instrument :
 FID_D
 ClientSampleId :
 PB137935BS



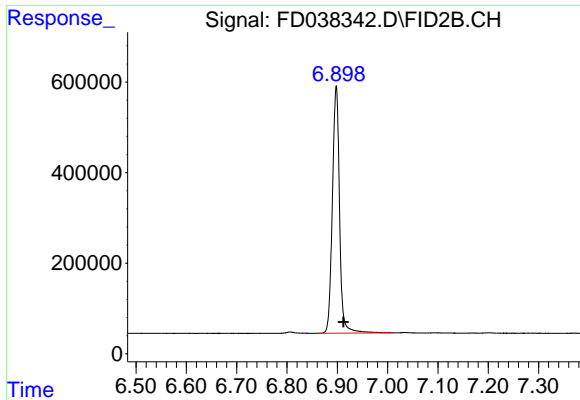
#2 n-Decane (C10)
 R.T.: 4.287 min
 Delta R.T.: -0.005 min
 Response: 5593632
 Conc: 45.73 ug/ml



#3 A~Naphthalene (C11.7)
 R.T.: 5.848 min
 Delta R.T.: -0.013 min
 Response: 5792934
 Conc: 42.38 ug/ml



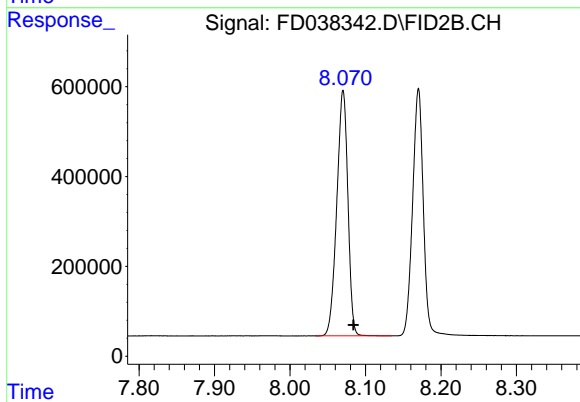
#4 n-Dodecane (C12)
 R.T.: 6.284 min
 Delta R.T.: -0.014 min
 Response: 5673940
 Conc: 45.56 ug/ml



#5 A~2-methylnaphthalene (C12.89)

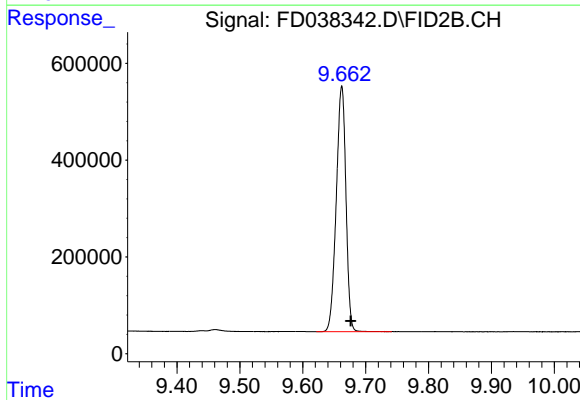
R.T.: 6.898 min
 Delta R.T.: -0.014 min
 Response: 5402777
 Conc: 39.22 ug/ml

Instrument :
 FID_D
 ClientSampleId :
 PB137935BS



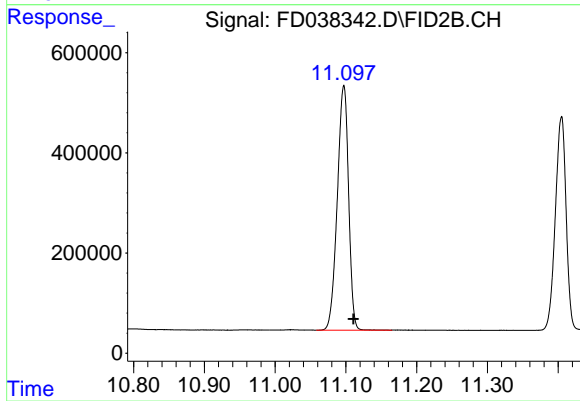
#6 n-Tetradecane (C14)

R.T.: 8.070 min
 Delta R.T.: -0.014 min
 Response: 5583281
 Conc: 43.44 ug/ml



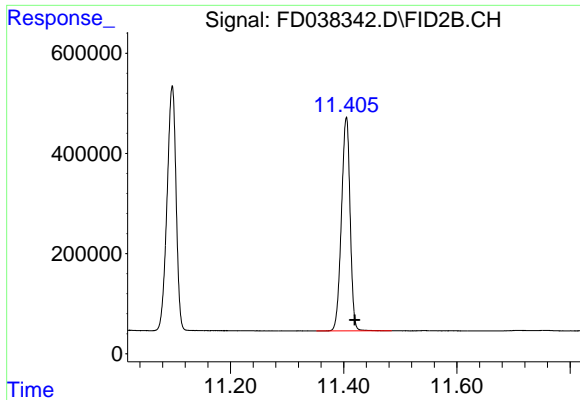
#7 n-Hexadecane (C16)

R.T.: 9.662 min
 Delta R.T.: -0.014 min
 Response: 5424160
 Conc: 41.86 ug/ml



#8 n-Octadecane (C18)

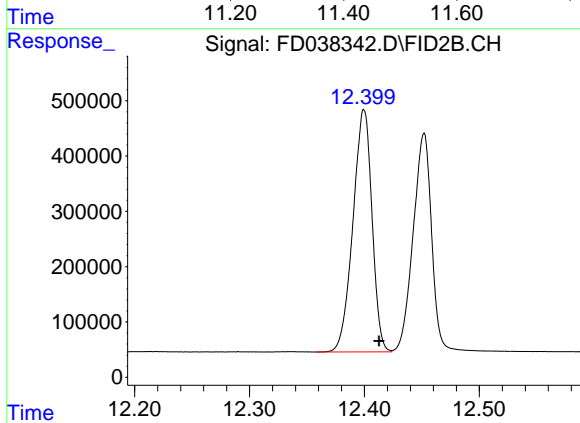
R.T.: 11.097 min
 Delta R.T.: -0.014 min
 Response: 5409911
 Conc: 40.17 ug/ml



#9 ortho-Terphenyl (SURR)

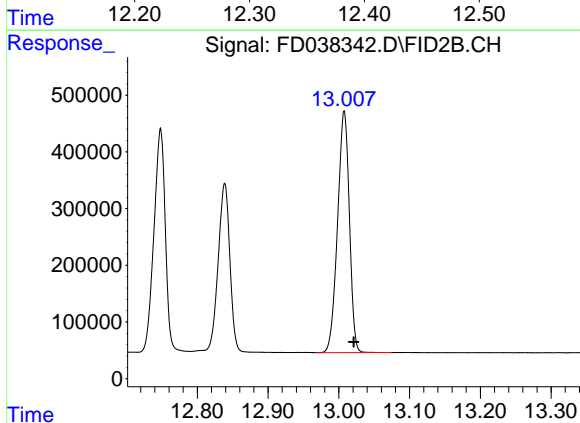
R.T.: 11.404 min
 Delta R.T.: -0.015 min
 Response: 4527941
 Conc: 31.32 ug/ml

Instrument :
 FID_D
 ClientSampleId :
 PB137935BS



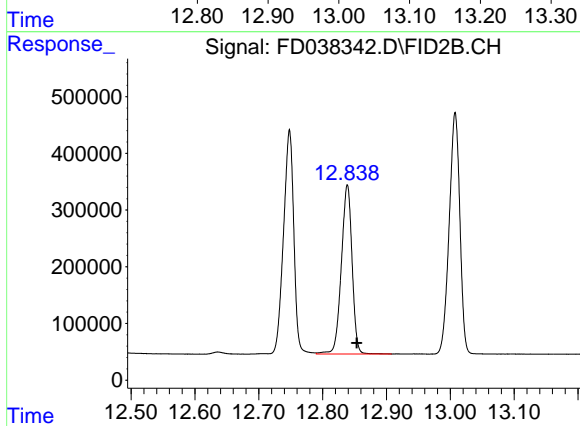
#10 n-Eicosane (C20)

R.T.: 12.399 min
 Delta R.T.: -0.013 min
 Response: 5047800
 Conc: 37.58 ug/ml



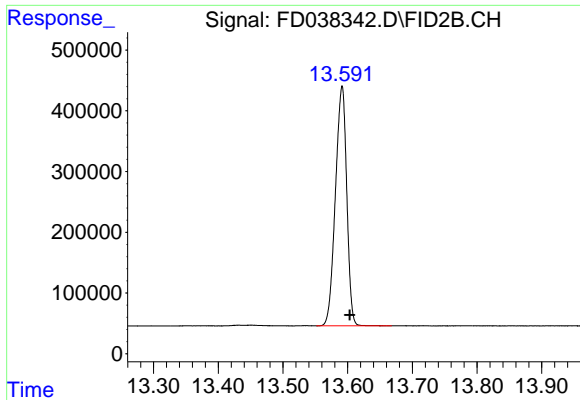
#11 n-Heneicosane (C21)

R.T.: 13.008 min
 Delta R.T.: -0.013 min
 Response: 4935518
 Conc: 36.33 ug/ml



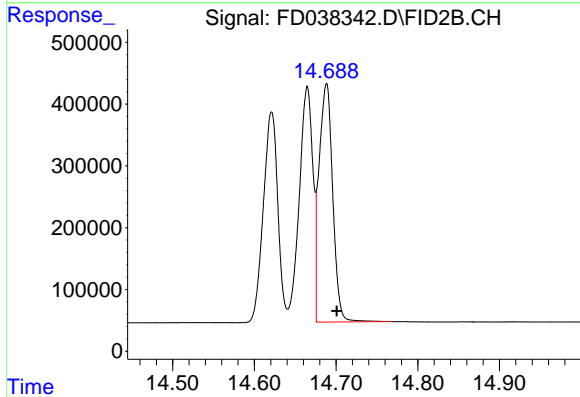
#12 1-chlorooctadecane (SURR)

R.T.: 12.839 min
 Delta R.T.: -0.015 min
 Response: 3480894
 Conc: 30.53 ug/ml

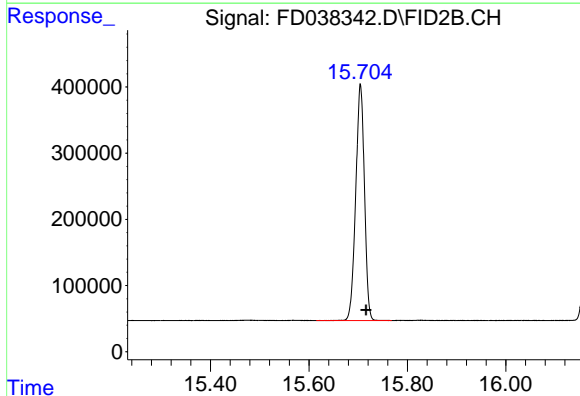


#13 n-Docosane (C22)
R.T.: 13.591 min
Delta R.T.: -0.013 min
Response: 4794910
Conc: 35.64 ug/ml

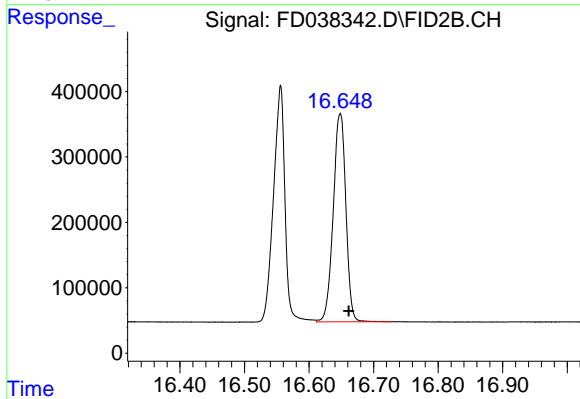
Instrument :
FID_D
ClientSampleId :
PB137935BS



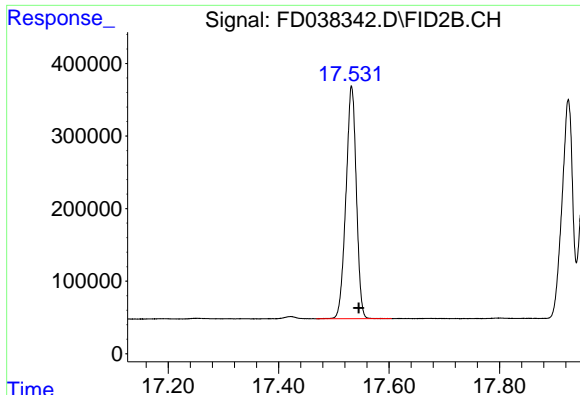
#14 n-Tetracosane (C24)
R.T.: 14.688 min
Delta R.T.: -0.013 min
Response: 4480465
Conc: 33.18 ug/ml



#15 n-Hexacosane (C26)
R.T.: 15.705 min
Delta R.T.: -0.012 min
Response: 4396339
Conc: 33.37 ug/ml

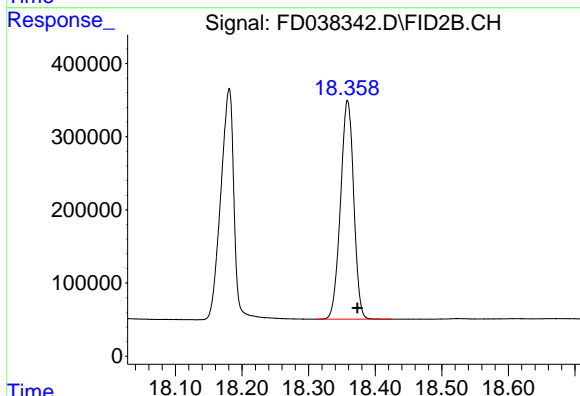


#16 n-Octacosane (C28)
R.T.: 16.648 min
Delta R.T.: -0.013 min
Response: 4334823
Conc: 33.25 ug/ml

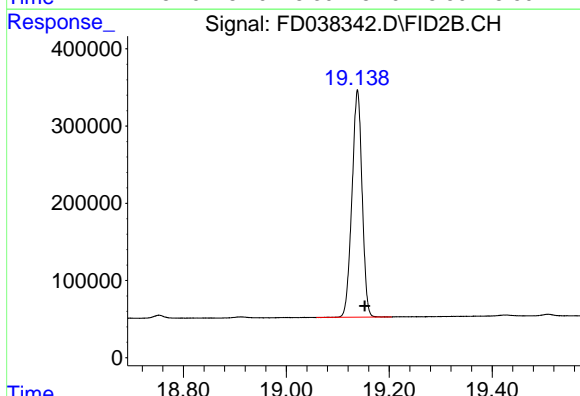


#17 n-Tricontane (C30)
R.T.: 17.532 min
Delta R.T.: -0.013 min
Response: 4180881
Conc: 32.72 ug/ml

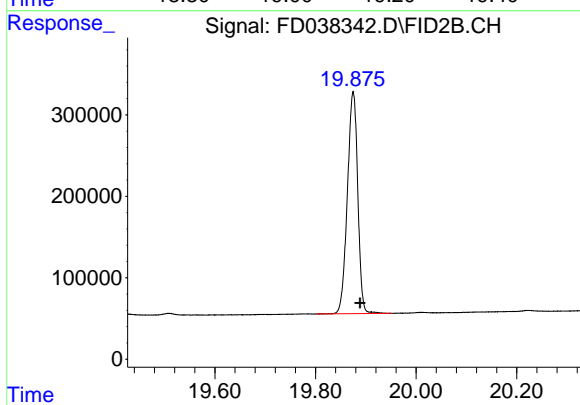
Instrument :
FID_D
ClientSampled :
PB137935BS



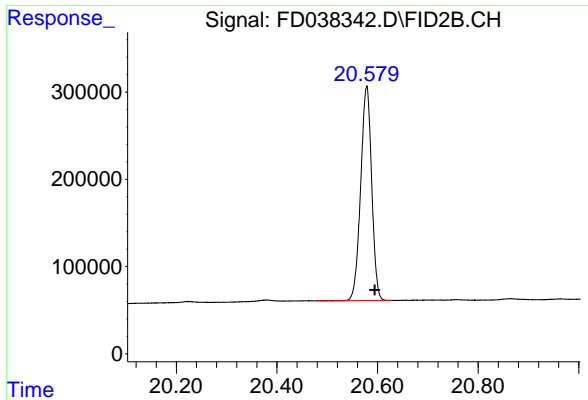
#18 n-Dotriacontane (C32)
R.T.: 18.359 min
Delta R.T.: -0.015 min
Response: 4120852
Conc: 33.49 ug/ml



#19 n-Tetraatriacontane (C34)
R.T.: 19.138 min
Delta R.T.: -0.014 min
Response: 4021992
Conc: 34.35 ug/ml



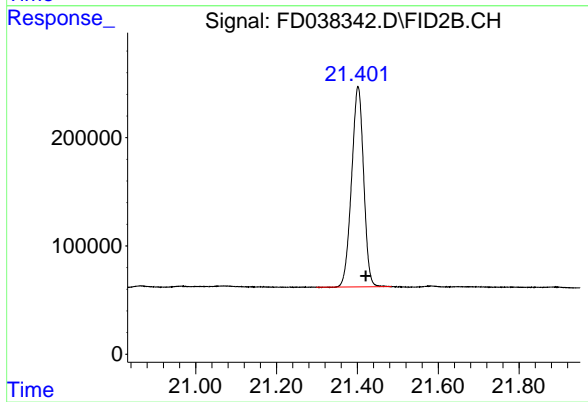
#20 n-Hexatriacontane (C36)
R.T.: 19.875 min
Delta R.T.: -0.014 min
Response: 3903622
Conc: 35.74 ug/ml



#21 n-Octatriacontane (C38)

R.T.: 20.578 min
Delta R.T.: -0.016 min
Response: 3723022
Conc: 36.96 ug/ml

Instrument :
FID_D
ClientSampled :
PB137935BS



#22 n-Tetracontane (C40)

R.T.: 21.402 min
Delta R.T.: -0.019 min
Response: 3823243
Conc: 39.09 ug/ml