

Data Path : Z:\pestpcbsrv\HPCHEM1\FID_D\Data\FD072822AL\
 Data File : FD043401.D
 Signal(s) : FID2B.ch
 Acq On : 28 Jul 2022 21:52
 Operator : YP/AJ
 Sample : N3896-15
 Misc :
 ALS Vial : 61 Sample Multiplier: 1

Instrument :
 FID_D
 ClientSampleId :
 RVE-72

Integration File: autoint1.e
 Quant Time: Jul 28 23:36:24 2022
 Quant Method : Z:\pestpcbsrv\HPCHEM1\FID_D\methods\Aliphatic EPH 072522.M
 Quant Title : GC Extractables
 QLast Update : Tue Jul 26 05:37:25 2022
 Response via : Initial Calibration
 Integrator: ChemStation

Volume Inj. : 1 ul
 Signal Phase : Rxi-1ms
 Signal Info : 20M x 0.18mm x 0.18um

Compound	R.T.	Response	Conc Units

System Monitoring Compounds			
9) S ortho-Terphenyl (SURR)	11.533	4881051	30.835 ug/ml
Spiked Amount	50.000	Recovery	= 61.67%
12) S 1-chlorooctadecane (S...	12.967	3780187	30.844 ug/ml
Spiked Amount	50.000	Recovery	= 61.69%

Target Compounds

(f)=RT Delta > 1/2 Window

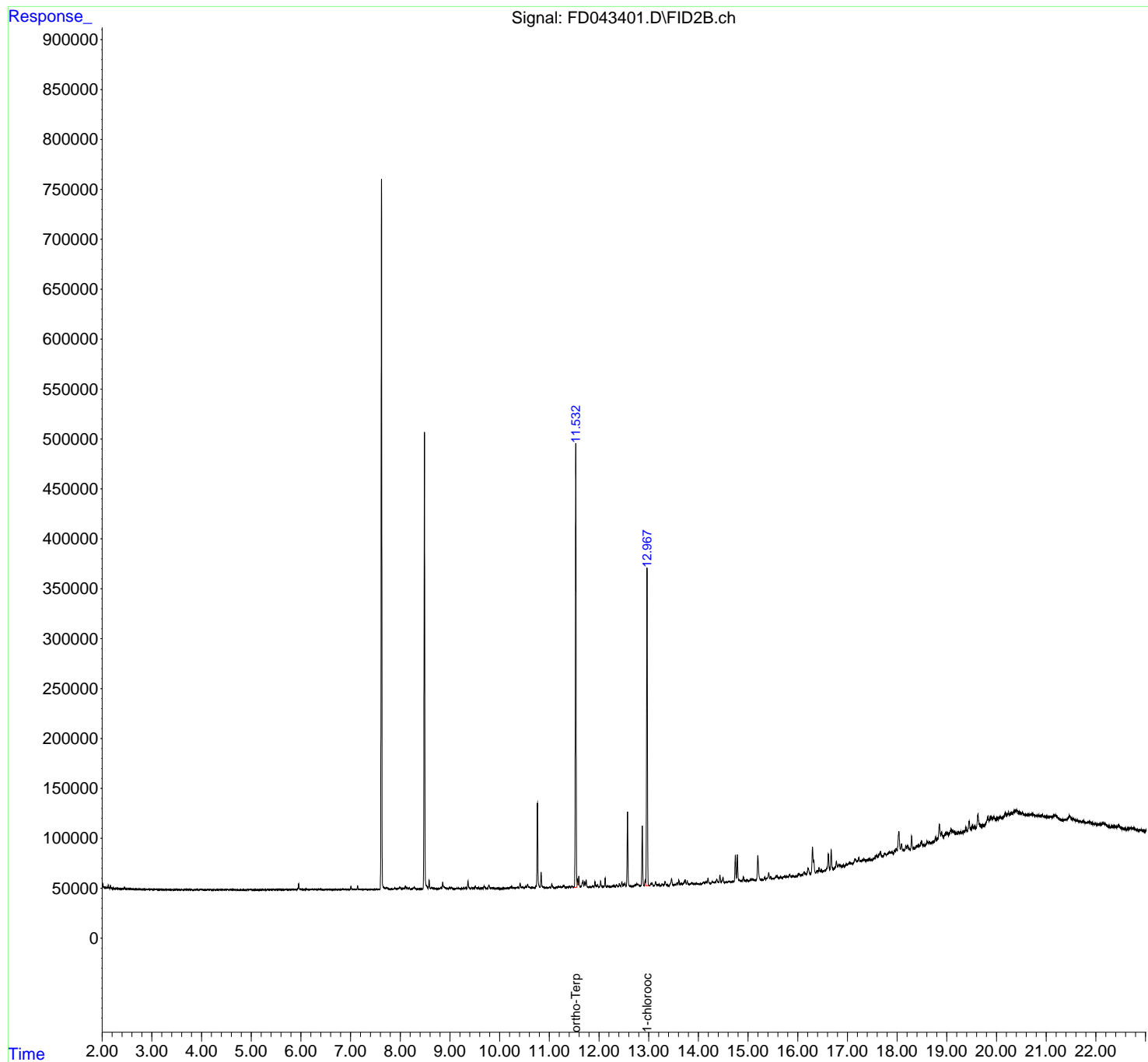
(m)=manual int.

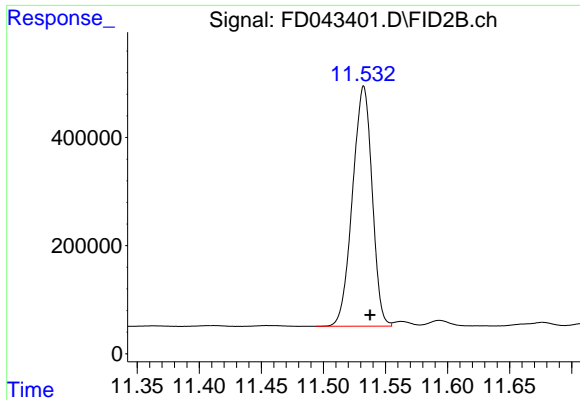
Data Path : Z:\pestpcbsrv\HPCHEM1\FID_D\Data\FD072822AL\
Data File : FD043401.D
Signal(s) : FID2B.ch
Acq On : 28 Jul 2022 21:52
Operator : YP/AJ
Sample : N3896-15
Misc :
ALS Vial : 61 Sample Multiplier: 1

Instrument :
FID_D
ClientSampleId :
RVE-72

Integration File: autoint1.e
Quant Time: Jul 28 23:36:24 2022
Quant Method : Z:\pestpcbsrv\HPCHEM1\FID_D\methods\Aliphatic EPH 072522.M
Quant Title : GC Extractables
QLast Update : Tue Jul 26 05:37:25 2022
Response via : Initial Calibration
Integrator: ChemStation

Volume Inj. : 1 ul
Signal Phase : Rxi-1ms
Signal Info : 20M x 0.18mm x 0.18um

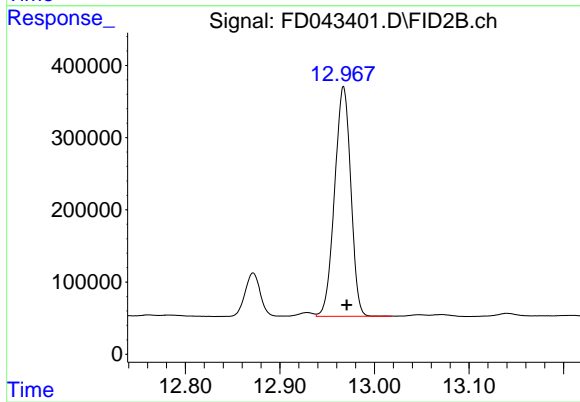




#9 ortho-Terphenyl (SURR)

R.T.: 11.533 min
Delta R.T.: -0.005 min
Response: 4881051
Conc: 30.84 ug/ml

Instrument :
FID_D
ClientSampleId :
RVE-72



#12 1-chlorooctadecane (SURR)

R.T.: 12.967 min
Delta R.T.: -0.003 min
Response: 3780187
Conc: 30.84 ug/ml