

Data Path : Z:\pestpcbsrv\HPCHEM1\FID\_D\Data\FD073024AR\  
 Data File : FD048080.D  
 Signal(s) : FID2B.ch  
 Acq On : 30 Jul 2024 23:46  
 Operator : YP/AJ  
 Sample : P3396-07  
 Misc :  
 ALS Vial : 69 Sample Multiplier: 1

**Instrument :**  
 FID\_D  
**ClientSampleId :**  
 P001-CF04-01

Integration File: autoint1.e  
 Quant Time: Jul 31 04:55:19 2024  
 Quant Method : Z:\pestpcbsrv\HPCHEM1\FID\_D\methods\Aromatic EPH 071524.M  
 Quant Title : GC Extractables  
 QLast Update : Mon Jul 15 13:13:15 2024  
 Response via : Initial Calibration  
 Integrator: ChemStation

Volume Inj. : 1 µl  
 Signal Phase : Rxi-1ms  
 Signal Info : 20M x 0.18mm x 0.18µm

Compound	R.T.	Response	Conc Units
-----			
System Monitoring Compounds			
4) S 2-Bromonaphthalene (S...	7.408	7067809	47.555 ug/ml
Spiked Amount 50.000		Recovery =	95.11%
6) S 2-Fluorobiphenyl (SURR)	8.257	4492149	47.465 ug/ml
Spiked Amount 50.000 Range 0 - 131		Recovery =	94.93%
11) S ortho-Terphenyl (SURR)	11.295	4883421	29.186 ug/ml
Spiked Amount 50.000		Recovery =	58.37%

Target Compounds

(f)=RT Delta > 1/2 Window

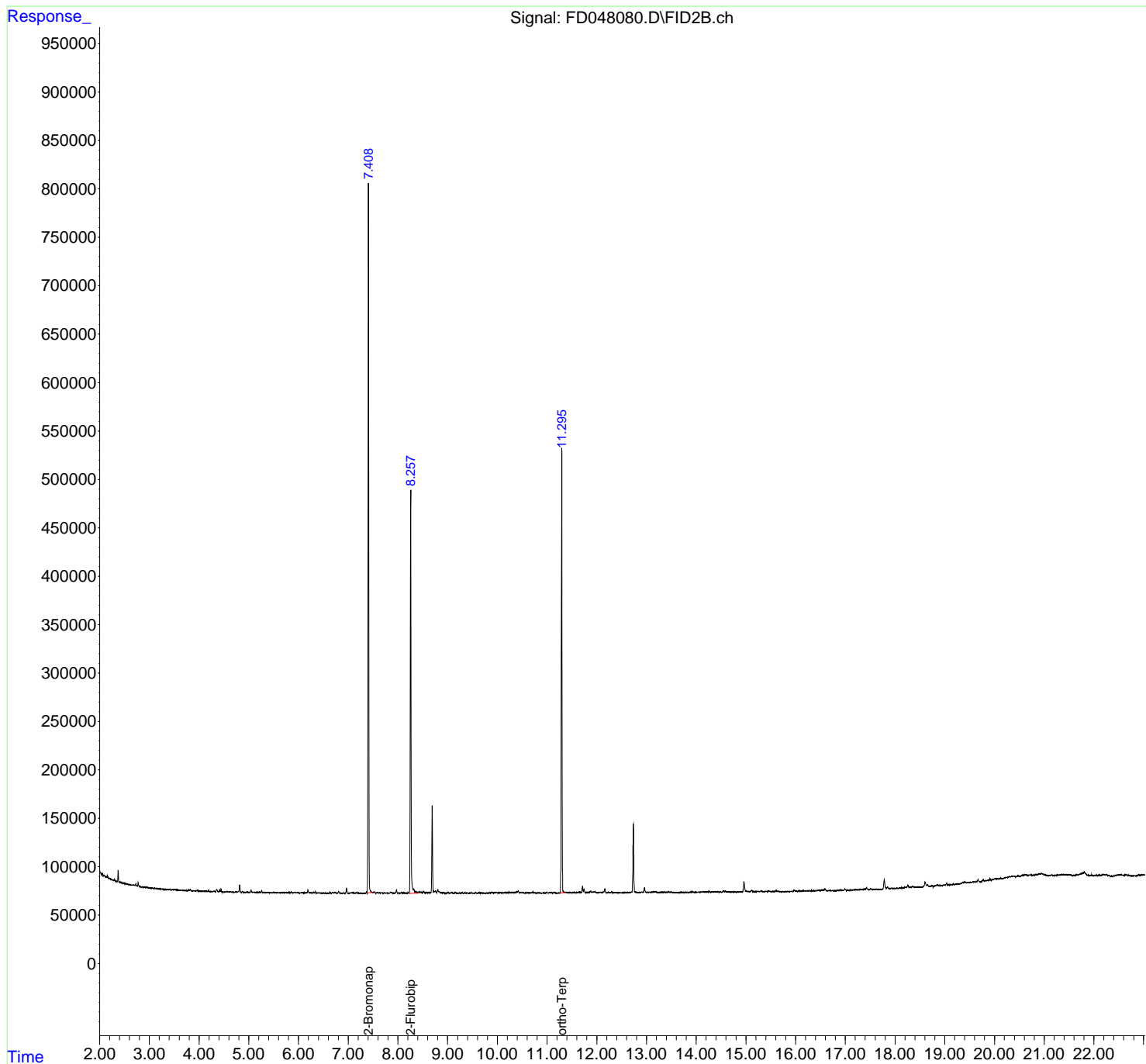
(m)=manual int.

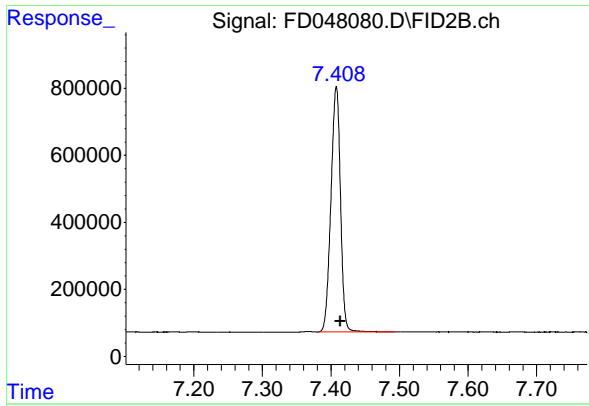
Data Path : Z:\pestpcbsrv\HPCHEM1\FID\_D\Data\FD073024AR\  
Data File : FD048080.D  
Signal(s) : FID2B.ch  
Acq On : 30 Jul 2024 23:46  
Operator : YP/AJ  
Sample : P3396-07  
Misc :  
ALS Vial : 69 Sample Multiplier: 1

Instrument :  
FID\_D  
ClientSampleId :  
P001-CF04-01

Integration File: autoint1.e  
Quant Time: Jul 31 04:55:19 2024  
Quant Method : Z:\pestpcbsrv\HPCHEM1\FID\_D\methods\Aromatic EPH 071524.M  
Quant Title : GC Extractables  
QLast Update : Mon Jul 15 13:13:15 2024  
Response via : Initial Calibration  
Integrator: ChemStation

Volume Inj. : 1 µl  
Signal Phase : Rxi-1ms  
Signal Info : 20M x 0.18mm x 0.18µm

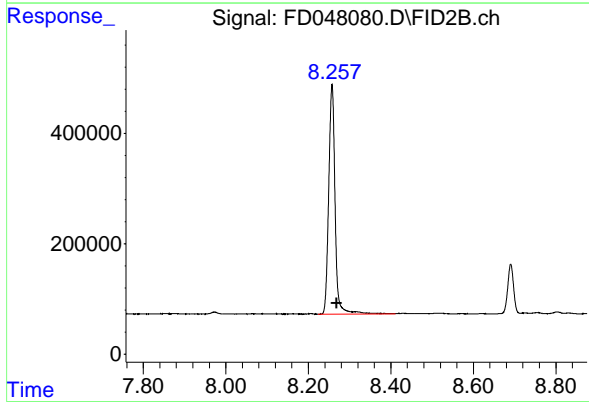




#4 2-Bromonaphthalene (SURR)

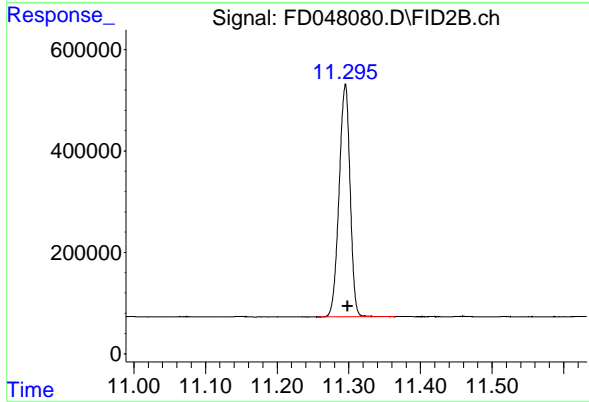
R.T.: 7.408 min  
 Delta R.T.: -0.006 min  
 Response: 7067809  
 Conc: 47.55 ug/ml

Instrument :  
 FID\_D  
 ClientSampleId :  
 P001-CF04-01



#6 2-Fluorobiphenyl (SURR)

R.T.: 8.257 min  
 Delta R.T.: -0.012 min  
 Response: 4492149  
 Conc: 47.47 ug/ml



#11 ortho-Terphenyl (SURR)

R.T.: 11.295 min  
 Delta R.T.: -0.004 min  
 Response: 4883421  
 Conc: 29.19 ug/ml