

Data Path : Z:\pestpcbsrv\HPCHEM1\FID\_D\Data\FD073119AL\  
 Data File : FD029903.D  
 Signal(s) : FID2B.CH  
 Acq On : 31 Jul 2019 18:58  
 Operator : DD\AJ  
 Sample : K4066-10  
 Misc :  
 ALS Vial : 61 Sample Multiplier: 1

Integration File: autoint1.e  
 Quant Time: Aug 01 04:22:51 2019  
 Quant Method : Z:\pestpcbsrv\HPCHEM1\FID\_D\methods\Alaphatic EPH 070919.M  
 Quant Title : GC Extractables  
 QLast Update : Wed Jul 10 08:45:46 2019  
 Response via : Initial Calibration  
 Integrator: ChemStation 6890 Scale Mode: Large solvent peaks clipped

Volume Inj. : 1 ul  
 Signal Phase : Rxi-1ms  
 Signal Info : 20M x 0.18mm x 0.18um

Compound	R.T.	Response	Conc Units
-----			
System Monitoring Compounds			
9) S ortho-Terphenyl (SURR)	11.580	5466725	37.756 ug/ml
Spiked Amount	50.000	Recovery	= 75.51%
12) S 1-chlorooctadecane (S...	13.005	4196041	35.334 ug/ml
Spiked Amount	50.000	Recovery	= 70.67%
Target Compounds			
6) T n-Tetradecane (C14)	8.292	334517	2.596 ug/ml
17) T n-Tricontane (C30)	17.678	114795	0.902 ug/ml
18) T n-Dotriacontane (C32)	18.499	138604	1.209 ug/ml
-----			

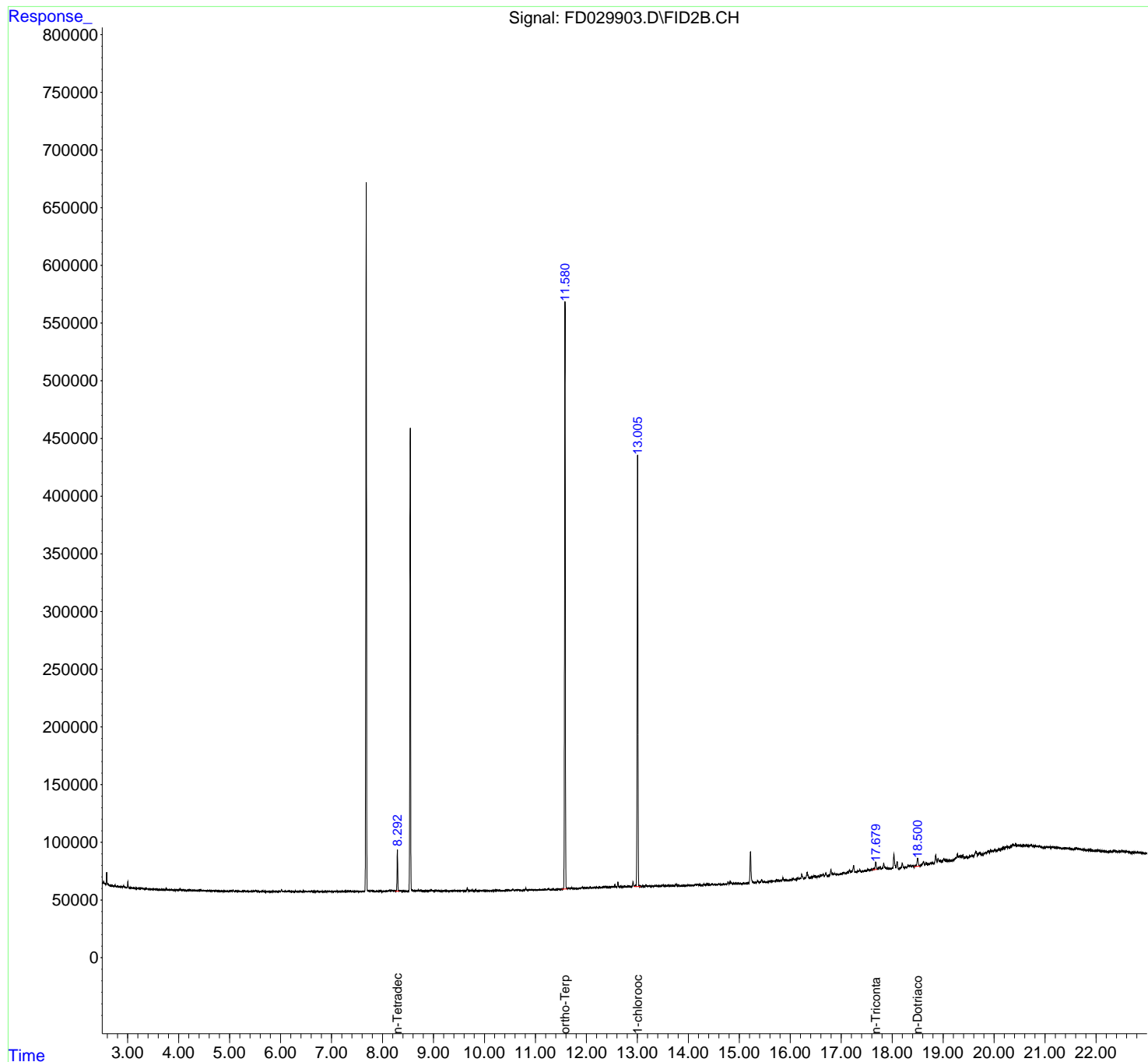
(f)=RT Delta > 1/2 Window

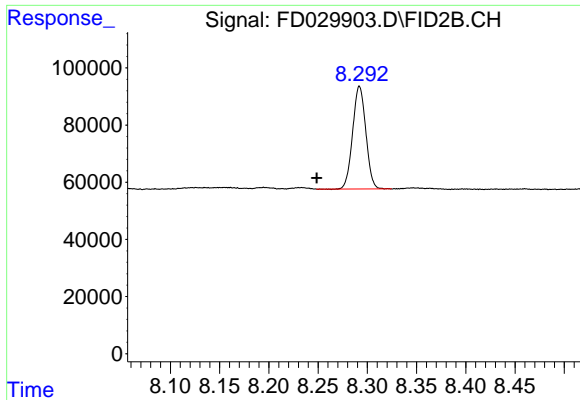
(m)=manual int.

Data Path : Z:\pestpcbsrv\HPCHEM1\FID\_D\Data\FD073119AL\  
Data File : FD029903.D  
Signal(s) : FID2B.CH  
Acq On : 31 Jul 2019 18:58  
Operator : DD\AJ  
Sample : K4066-10  
Misc :  
ALS Vial : 61 Sample Multiplier: 1

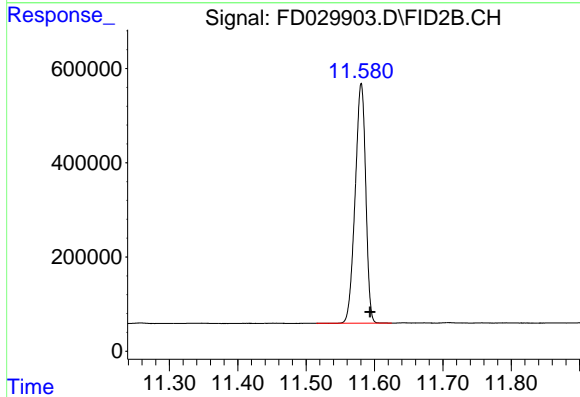
Integration File: autoint1.e  
Quant Time: Aug 01 04:22:51 2019  
Quant Method : Z:\pestpcbsrv\HPCHEM1\FID\_D\methods\Alaphatic EPH 070919.M  
Quant Title : GC Extractables  
QLast Update : Wed Jul 10 08:45:46 2019  
Response via : Initial Calibration  
Integrator: ChemStation 6890 Scale Mode: Large solvent peaks clipped

Volume Inj. : 1 ul  
Signal Phase : Rxi-1ms  
Signal Info : 20M x 0.18mm x 0.18um

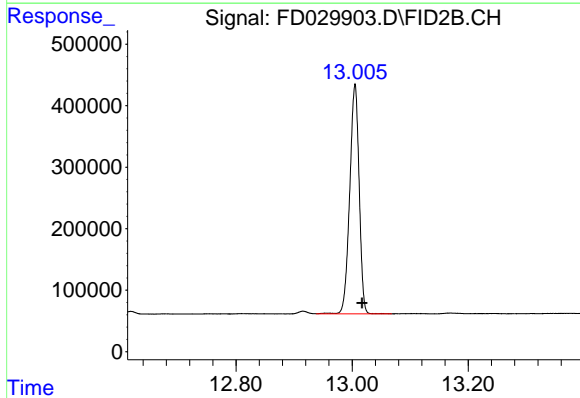




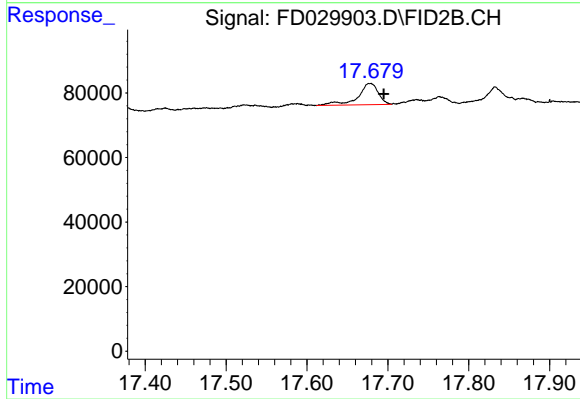
#6 n-Tetradecane (C14)  
 R.T.: 8.292 min  
 Delta R.T.: 0.044 min  
 Response: 334517  
 Conc: 2.60 ug/ml



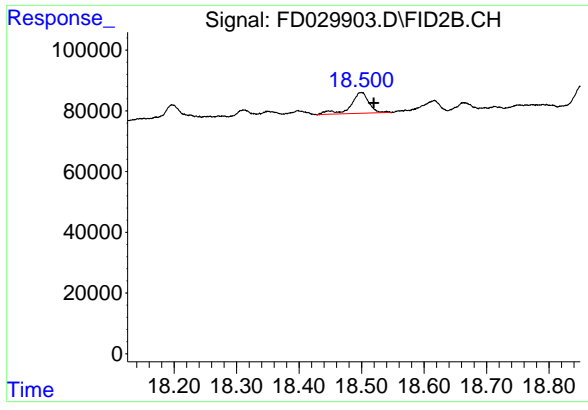
#9 ortho-Terphenyl (SURR)  
 R.T.: 11.580 min  
 Delta R.T.: -0.013 min  
 Response: 5466725  
 Conc: 37.76 ug/ml



#12 1-chlorooctadecane (SURR)  
 R.T.: 13.005 min  
 Delta R.T.: -0.012 min  
 Response: 4196041  
 Conc: 35.33 ug/ml



#17 n-Tricontane (C30)  
 R.T.: 17.678 min  
 Delta R.T.: -0.017 min  
 Response: 114795  
 Conc: 0.90 ug/ml



#18 n-Dotriacontane (C32)

R.T.: 18.499 min  
Delta R.T.: -0.020 min  
Response: 138604  
Conc: 1.21 ug/ml