

Data Path : Z:\pestpcbsrv\HPCHEM1\FID\_D\Data\FD073120AR\  
 Data File : FD034293.D  
 Signal(s) : FID2B.CH  
 Acq On : 01 Aug 2020 12:44  
 Operator : DD\AJ  
 Sample : L3511-15  
 Misc :  
 ALS Vial : 88 Sample Multiplier: 1

Integration File: autoint1.e  
 Quant Time: Aug 03 08:28:07 2020  
 Quant Method : Z:\pestpcbsrv\HPCHEM1\FID\_D\methods\Aromatic EPH 073120.M  
 Quant Title : GC Extractables  
 QLast Update : Sat Aug 01 05:27:18 2020  
 Response via : Initial Calibration  
 Integrator: ChemStation 6890 Scale Mode: Large solvent peaks clipped

Volume Inj. : 1 µl  
 Signal Phase : Rxi-1ms  
 Signal Info : 20M x 0.18mm x 0.18µm

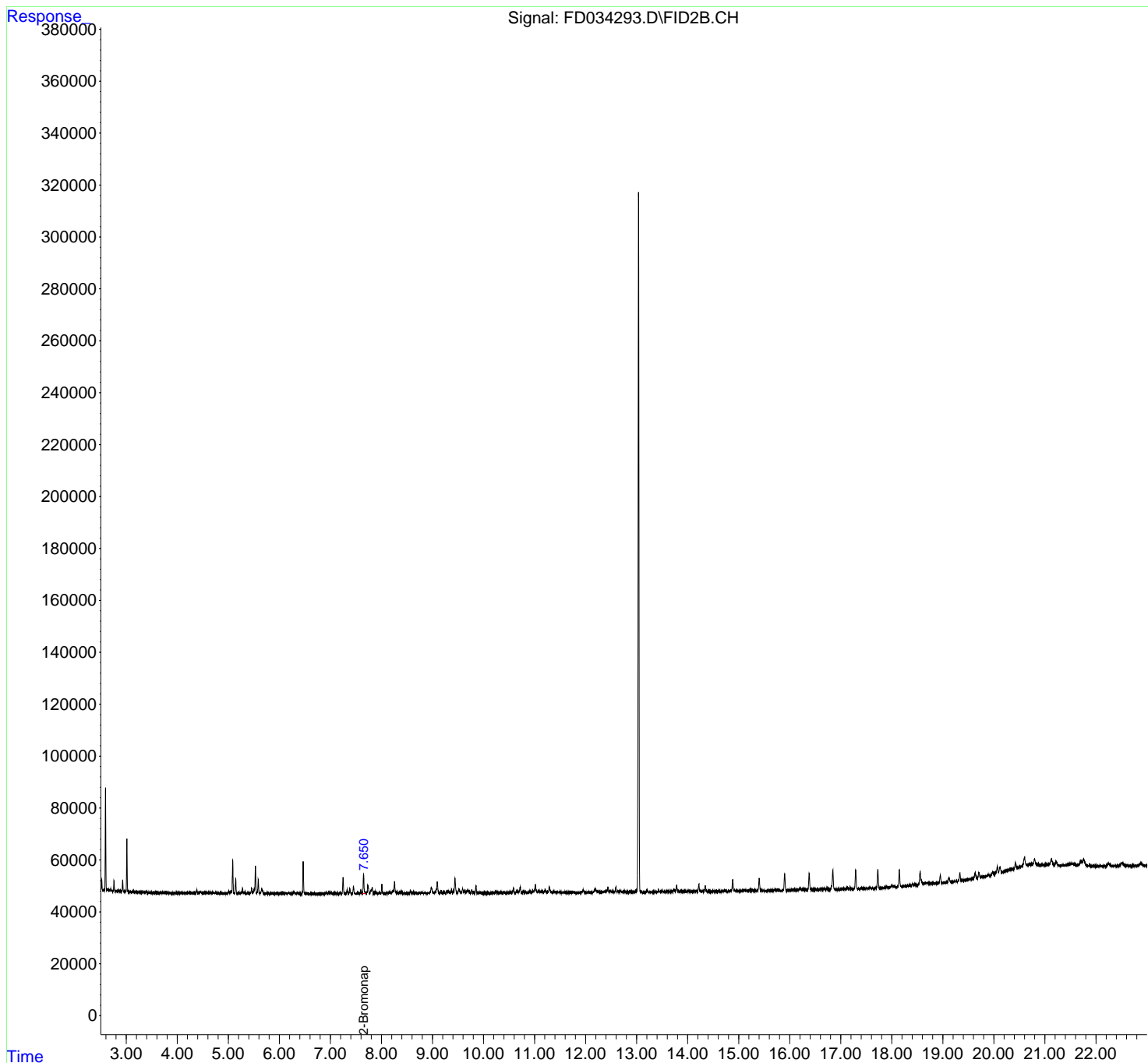
Compound	R.T.	Response	Conc Units
-----			
System Monitoring Compounds			
4) S 2-Bromonaphthalene (S...	7.650f	85816	0.733 ug/ml
Spiked Amount	50.000	Recovery =	1.47%
Target Compounds			
-----			

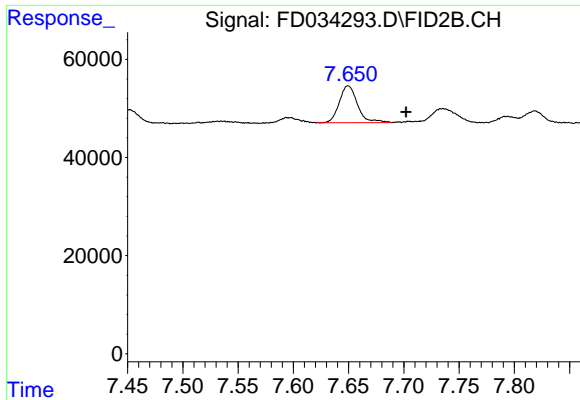
(f)=RT Delta > 1/2 Window (m)=manual int.

Data Path : Z:\pestpcbsrv\HPCHEM1\FID\_D\Data\FD073120AR\  
Data File : FD034293.D  
Signal(s) : FID2B.CH  
Acq On : 01 Aug 2020 12:44  
Operator : DD\AJ  
Sample : L3511-15  
Misc :  
ALS Vial : 88 Sample Multiplier: 1

Integration File: autoint1.e  
Quant Time: Aug 03 08:28:07 2020  
Quant Method : Z:\pestpcbsrv\HPCHEM1\FID\_D\methods\Aromatic EPH 073120.M  
Quant Title : GC Extractables  
QLast Update : Sat Aug 01 05:27:18 2020  
Response via : Initial Calibration  
Integrator: ChemStation 6890 Scale Mode: Large solvent peaks clipped

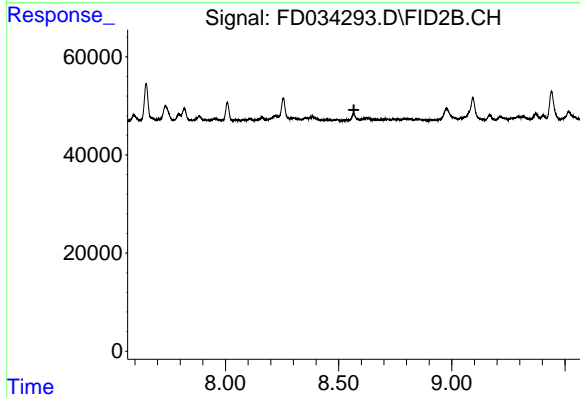
Volume Inj. : 1 µl  
Signal Phase : Rxi-1ms  
Signal Info : 20M x 0.18mm x 0.18µm





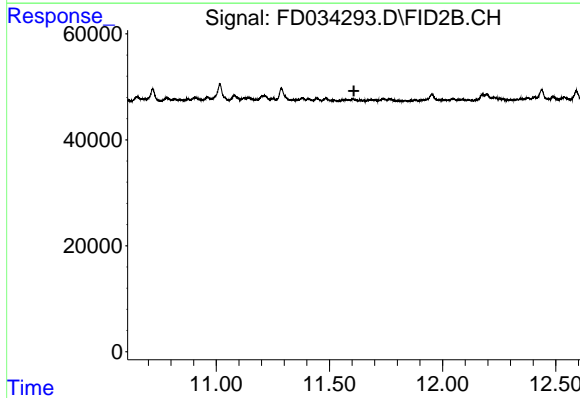
#4 2-Bromonaphthalene (SURR)

R.T.: 7.650 min  
Delta R.T.: -0.052 min  
Response: 85816  
Conc: 0.73 ug/ml



#6 2-Fluorobiphenyl (SURR)

R.T.: 0.000 min  
Exp R.T. : 8.568 min  
Response: 0  
Conc: N.D.



#11 ortho-Terphenyl (SURR)

R.T.: 0.000 min  
Exp R.T. : 11.608 min  
Response: 0  
Conc: N.D.