

Data Path : Z:\pestpcbsrv\HPCHEM1\FID_D\Data\FD073124AR\
Data File : FD048088.D
Signal(s) : FID2B.ch
Acq On : 31 Jul 2024 06:26
Operator : YP/AJ
Sample : MECL2
Misc :
ALS Vial : 51 Sample Multiplier: 1

Instrument :
FID_D
ClientSampleId :
MECL2

Integration File: autoint1.e
Quant Time: Aug 01 04:48:16 2024
Quant Method : Z:\pestpcbsrv\HPCHEM1\FID_D\methods\Aromatic EPH 071524.M
Quant Title : GC Extractables
QLast Update : Mon Jul 15 13:13:15 2024
Response via : Initial Calibration
Integrator: ChemStation

Volume Inj. : 1 µl
Signal Phase : Rxi-1ms
Signal Info : 20M x 0.18mm x 0.18µm

Compound	R.T.	Response	Conc Units
----------	------	----------	------------

System Monitoring Compounds

Target Compounds

(f)=RT Delta > 1/2 Window

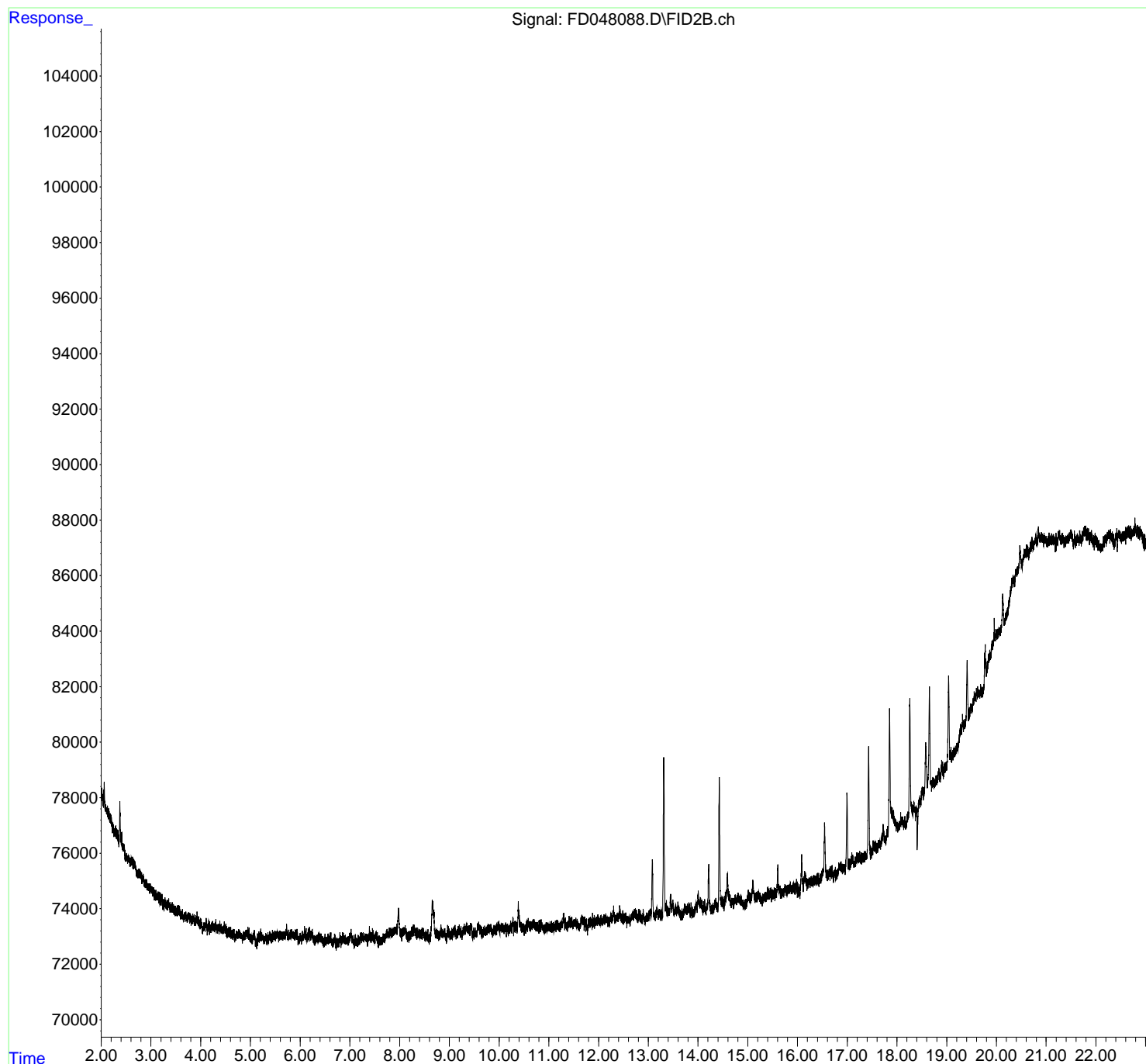
(m)=manual int.

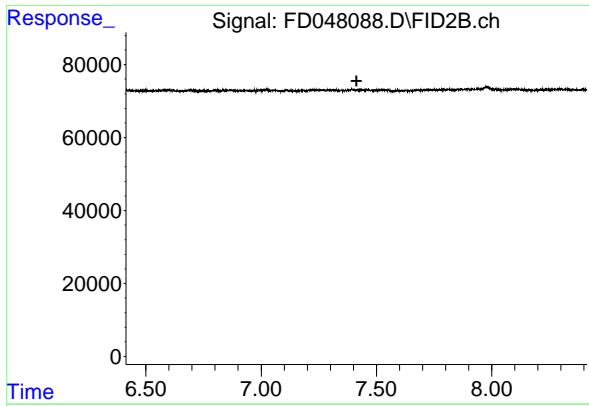
Data Path : Z:\pestpcbsrv\HPCHEM1\FID_D\Data\FD073124AR\
 Data File : FD048088.D
 Signal(s) : FID2B.ch
 Acq On : 31 Jul 2024 06:26
 Operator : YP/AJ
 Sample : MECL2
 Misc :
 ALS Vial : 51 Sample Multiplier: 1

Instrument :
 FID_D
ClientSampleId :
 MECL2

Integration File: autoint1.e
 Quant Time: Aug 01 04:48:16 2024
 Quant Method : Z:\pestpcbsrv\HPCHEM1\FID_D\methods\Aromatic EPH 071524.M
 Quant Title : GC Extractables
 QLast Update : Mon Jul 15 13:13:15 2024
 Response via : Initial Calibration
 Integrator: ChemStation

Volume Inj. : 1 µl
 Signal Phase : Rxi-1ms
 Signal Info : 20M x 0.18mm x 0.18µm

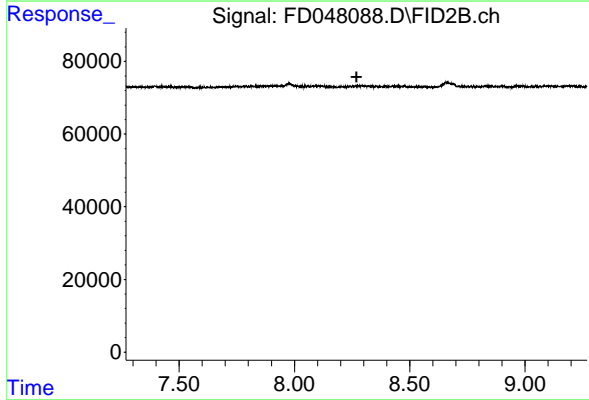




#4 2-Bromonaphthalene (SURR)

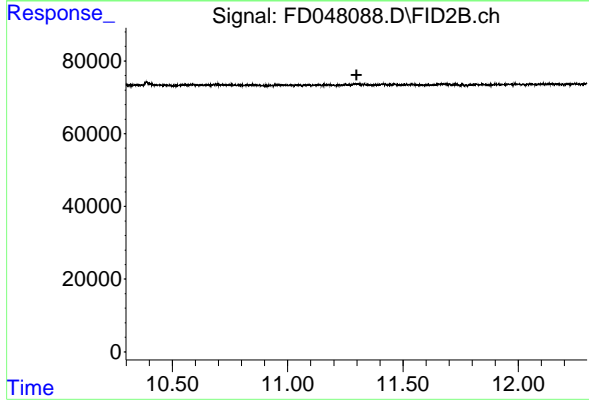
R.T.: 0.000 min
 Exp R.T. : 7.413 min
 Response: 0
 Conc: N.D.

Instrument :
 FID_D
 ClientSampleId :
 MECL2



#6 2-Fluorobiphenyl (SURR)

R.T.: 0.000 min
 Exp R.T. : 8.269 min
 Response: 0
 Conc: N.D.



#11 ortho-Terphenyl (SURR)

R.T.: 0.000 min
 Exp R.T. : 11.298 min
 Response: 0
 Conc: N.D.