

Data Path : Z:\pestpcbsrv\HPCHEM1\FID_D\Data\FD080218AL\
 Data File : FD025290.D
 Signal(s) : FID2B.CH
 Acq On : 02 Aug 2018 23:55
 Operator : AJ\SJ
 Sample : J4285-13
 Misc :
 ALS Vial : 61 Sample Multiplier: 1

Integration File: autoint1.e
 Quant Time: Aug 03 08:10:09 2018
 Quant Method : Z:\pestpcbsrv\HPCHEM1\FID_D\methods\Alaphatic EPH 080218.M
 Quant Title : GC Extractables
 QLast Update : Thu Aug 02 16:12:55 2018
 Response via : Initial Calibration
 Integrator: ChemStation 6890 Scale Mode: Large solvent peaks clipped

Volume Inj. : 1 ul
 Signal Phase : Rxi-lms
 Signal Info : 20M x 0.18mm x 0.18um

Compound	R.T.	Response	Conc Units
System Monitoring Compounds			
9) S ortho-Terphenyl (SURR)	11.341	1779275	21.180 ug/ml
Spiked Amount	50.000	Recovery	= 42.36%
12) S 1-chlorooctadecane (S...	12.765	3974254	57.648 ug/ml
Spiked Amount	50.000	Recovery	= 115.30%
Target Compounds			
3) T A-Naphthalene (C11.7)	5.774	977024	12.537 ug/ml
5) T A-2-methylnaphthalene...	6.825	486239	6.216 ug/ml
6) T n-Tetradecane (C14)	8.063	168350	2.430 ug/ml
7) T n-Hexadecane (C16)	9.591	466156	6.497 ug/ml
8) T n-Octadecane (C18)	11.080	683012	9.057 ug/ml
10) T n-Eicosane (C20)	12.308	1069022	13.703 ug/ml
11) T n-Heneicosane (C21)	12.938	2687957	34.230 ug/ml
13) T n-Docosane (C22)	13.533	4342207	54.850 ug/ml
14) T n-Tetracosane (C24)	14.636	948603	11.786 ug/ml
15) T n-Hexacosane (C26)	15.604	580357	7.088 ug/ml
16) T n-Octacosane (C28)	16.574	3254343	36.074 ug/ml
17) T n-Tricontane (C30)	17.448	879799	8.357 ug/ml
18) T n-Dotriacontane (C32)	18.303	587787	6.000 ug/ml
19) T n-Tetratriacontane (C34)	19.084	273947	3.122 ug/ml
20) T n-Hexatriacontane (C36)	19.868	293085	3.489 ug/ml
21) T n-Octatriacontane (C38)	20.558	557353	6.673 ug/ml

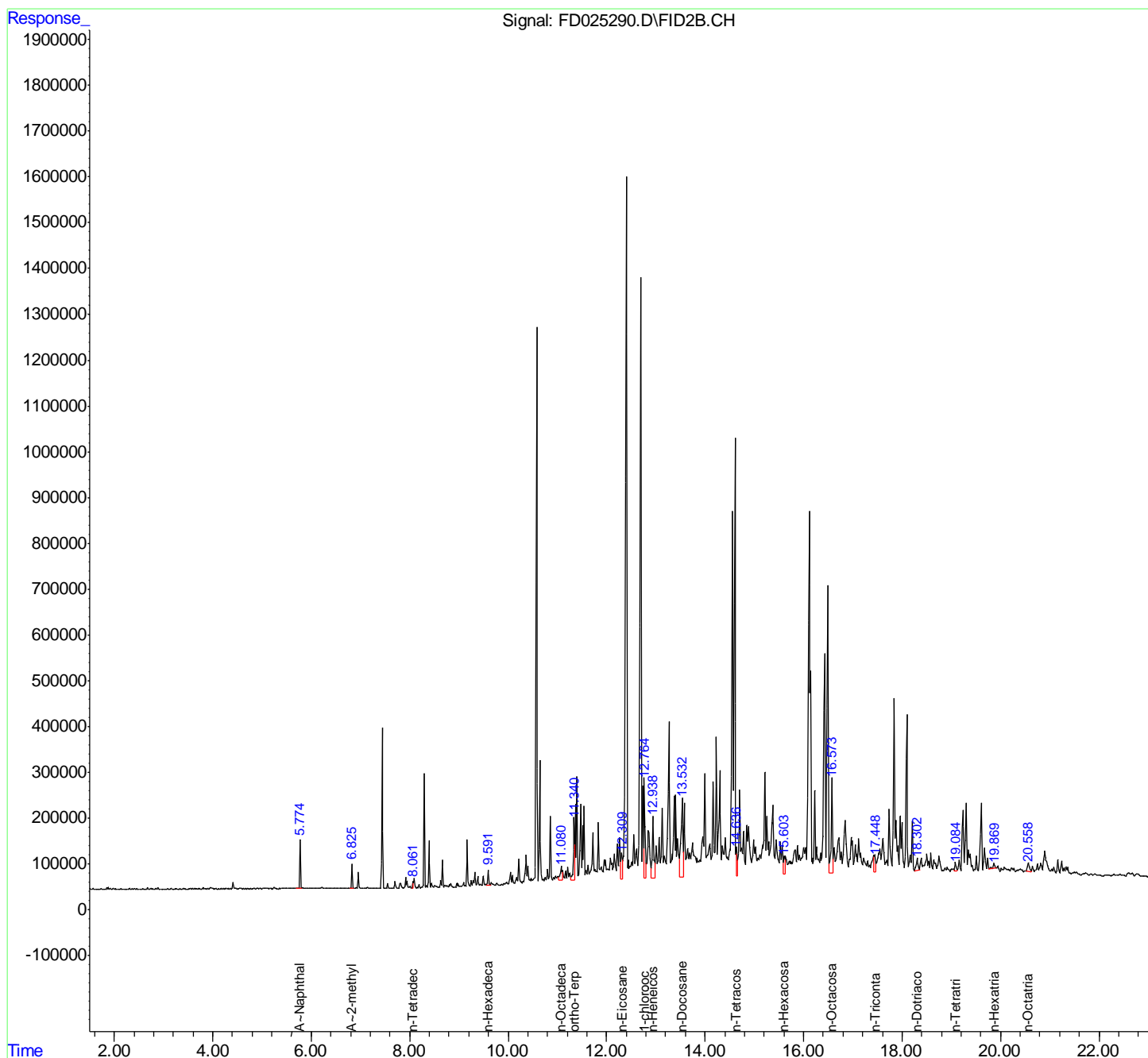
(f)=RT Delta > 1/2 Window

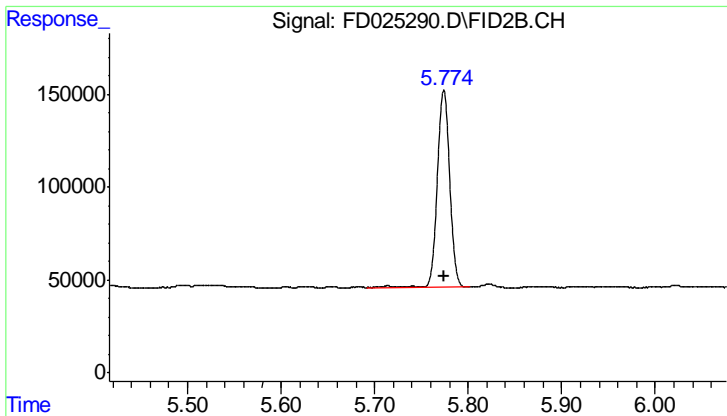
(m)=manual int.

Data Path : Z:\pestpcbsrv\HPCHEM1\FID_D\Data\FD080218AL\
 Data File : FD025290.D
 Signal(s) : FID2B.CH
 Acq On : 02 Aug 2018 23:55
 Operator : AJ\SJ
 Sample : J4285-13
 Misc :
 ALS Vial : 61 Sample Multiplier: 1

Integration File: autoint1.e
 Quant Time: Aug 03 08:10:09 2018
 Quant Method : Z:\pestpcbsrv\HPCHEM1\FID_D\methods\Alaphatic EPH 080218.M
 Quant Title : GC Extractables
 QLast Update : Thu Aug 02 16:12:55 2018
 Response via : Initial Calibration
 Integrator: ChemStation 6890 Scale Mode: Large solvent peaks clipped

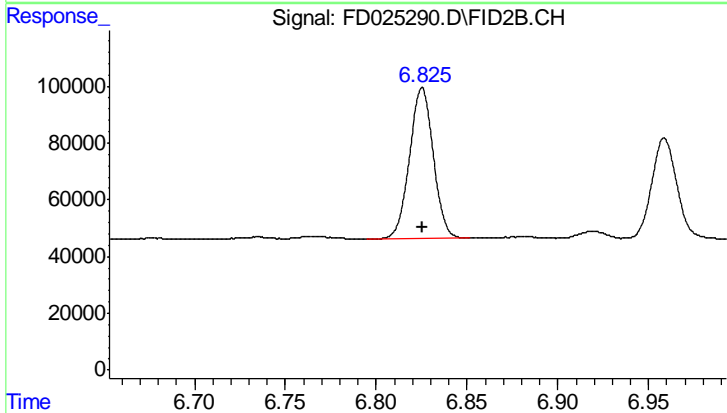
Volume Inj. : 1 ul
 Signal Phase : Rxi-lms
 Signal Info : 20M x 0.18mm x 0.18um





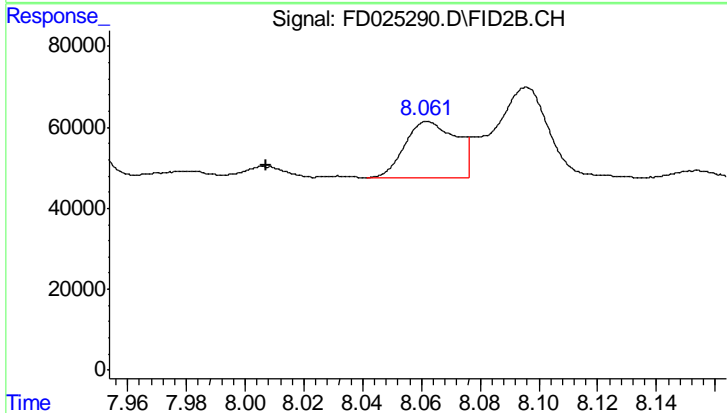
#3 A~Naphthalene (C11.7)

R.T.: 5.774 min
 Delta R.T.: 0.000 min
 Response: 977024
 Conc: 12.54 ug/ml



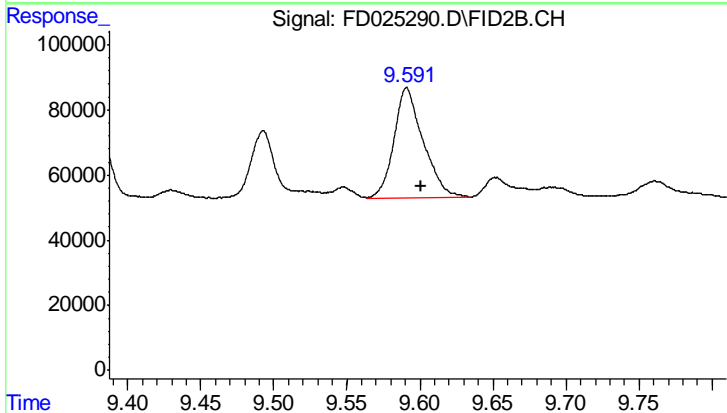
#5 A~2-methylnaphthalene (C12.89)

R.T.: 6.825 min
 Delta R.T.: 0.000 min
 Response: 486239
 Conc: 6.22 ug/ml



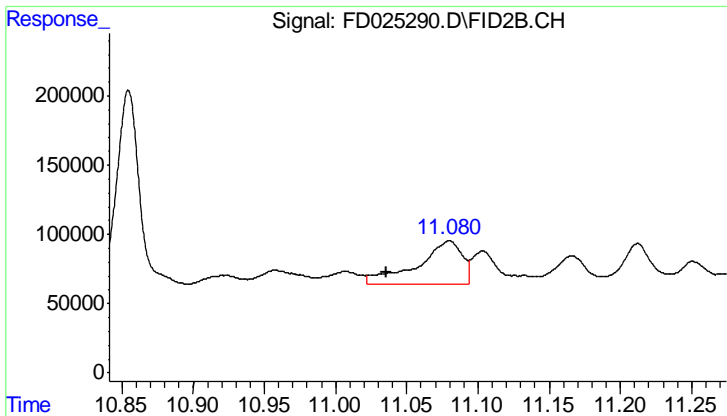
#6 n-Tetradecane (C14)

R.T.: 8.063 min
 Delta R.T.: 0.055 min
 Response: 168350
 Conc: 2.43 ug/ml

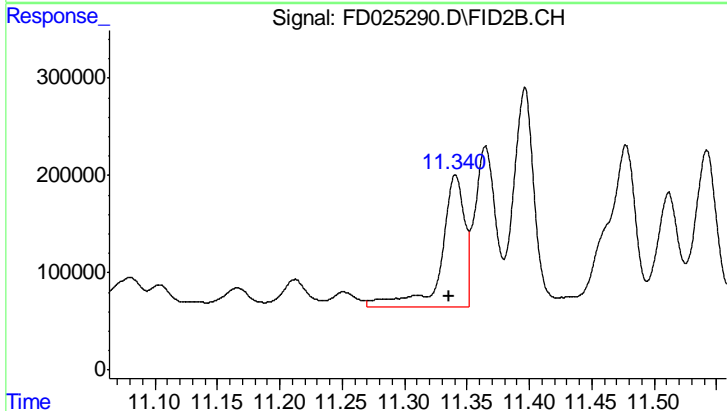


#7 n-Hexadecane (C16)

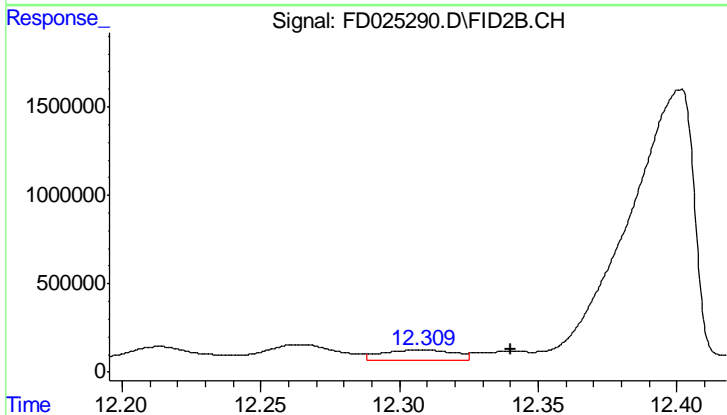
R.T.: 9.591 min
 Delta R.T.: -0.009 min
 Response: 466156
 Conc: 6.50 ug/ml



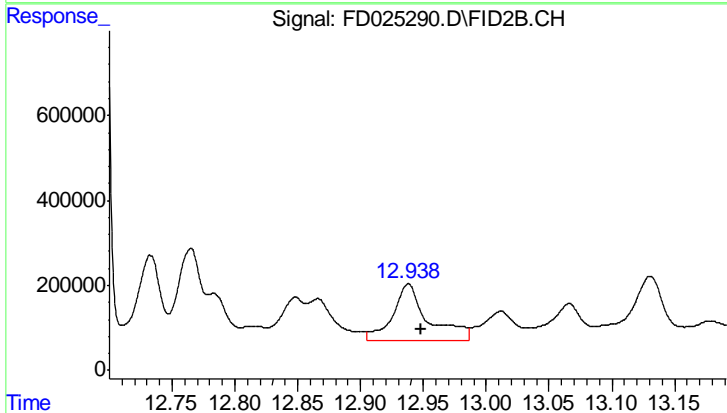
#8 n-Octadecane (C18)
 R.T.: 11.080 min
 Delta R.T.: 0.044 min
 Response: 683012
 Conc: 9.06 ug/ml



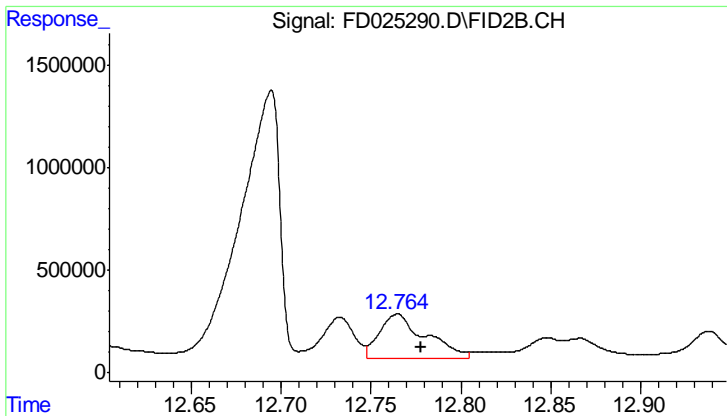
#9 ortho-Terphenyl (SURR)
 R.T.: 11.341 min
 Delta R.T.: 0.005 min
 Response: 1779275
 Conc: 21.18 ug/ml



#10 n-Eicosane (C20)
 R.T.: 12.308 min
 Delta R.T.: -0.032 min
 Response: 1069022
 Conc: 13.70 ug/ml

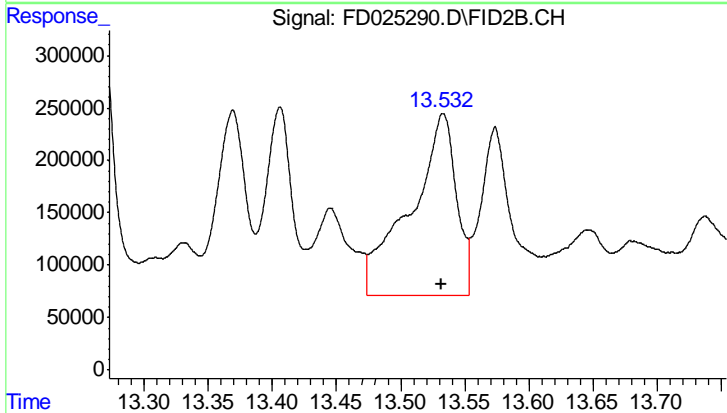


#11 n-Heneicosane (C21)
 R.T.: 12.938 min
 Delta R.T.: -0.010 min
 Response: 2687957
 Conc: 34.23 ug/ml



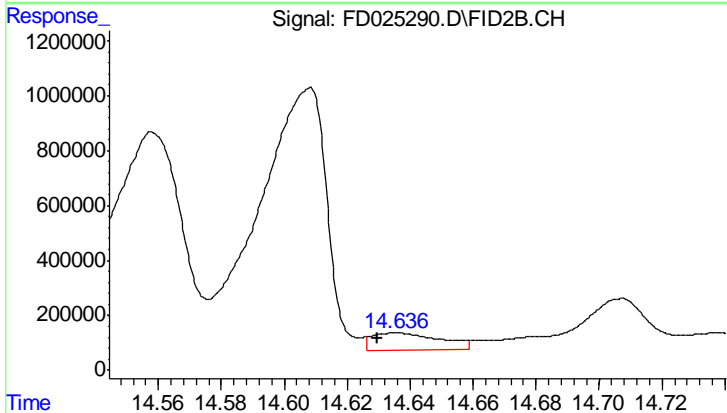
#12 1-chlorooctadecane (SURR)

R.T.: 12.765 min
Delta R.T.: -0.013 min
Response: 3974254
Conc: 57.65 ug/ml



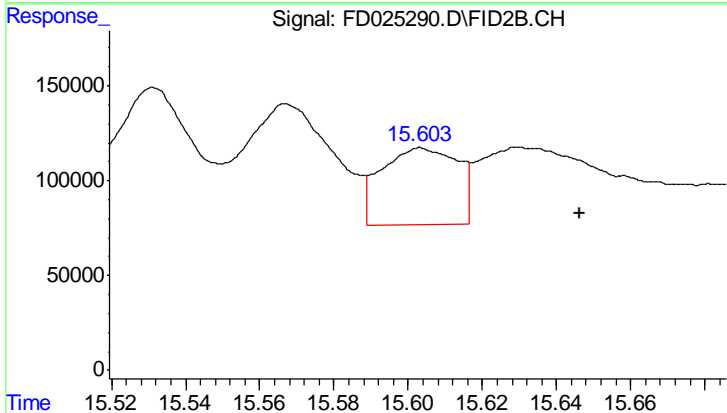
#13 n-Docosane (C22)

R.T.: 13.533 min
Delta R.T.: 0.001 min
Response: 4342207
Conc: 54.85 ug/ml



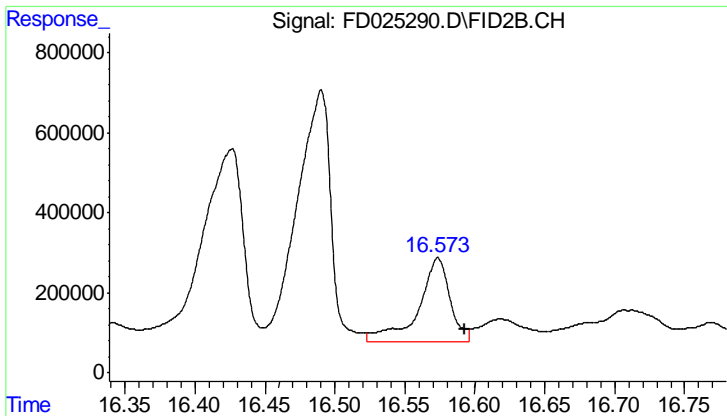
#14 n-Tetracosane (C24)

R.T.: 14.636 min
Delta R.T.: 0.006 min
Response: 948603
Conc: 11.79 ug/ml

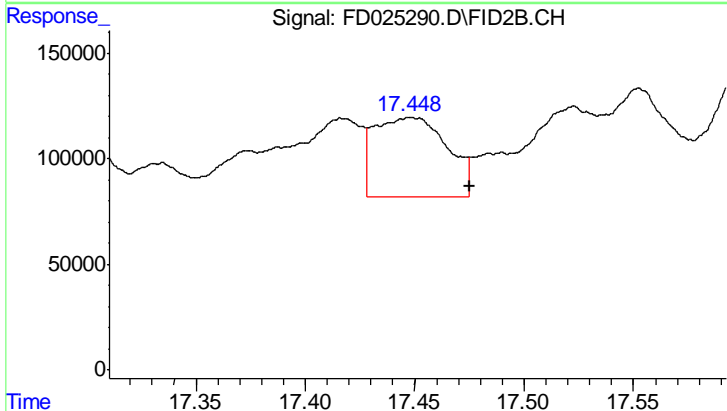


#15 n-Hexacosane (C26)

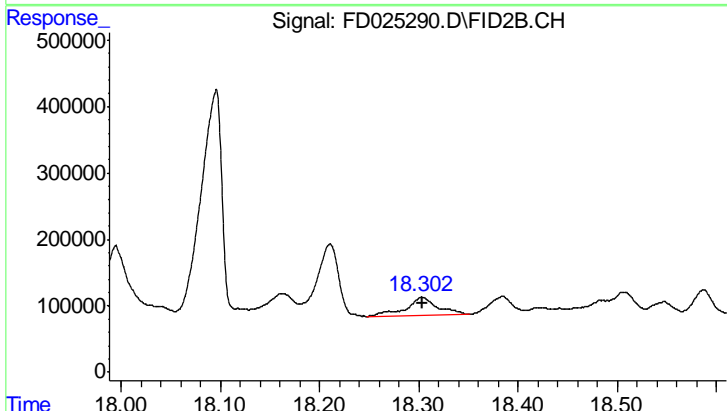
R.T.: 15.604 min
Delta R.T.: -0.042 min
Response: 580357
Conc: 7.09 ug/ml



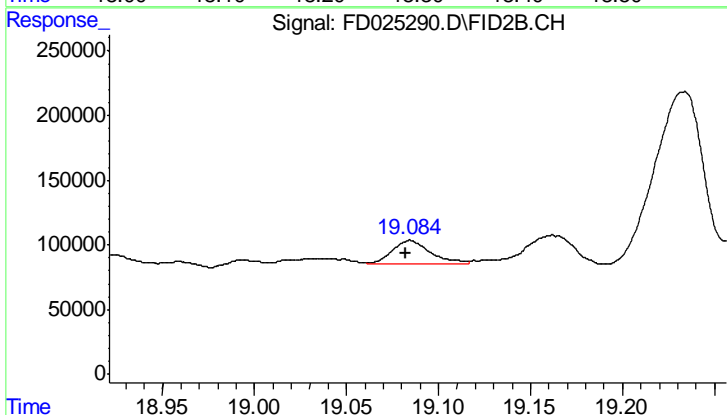
#16 n-Octacosane (C28)
R.T.: 16.574 min
Delta R.T.: -0.019 min
Response: 3254343
Conc: 36.07 ug/ml



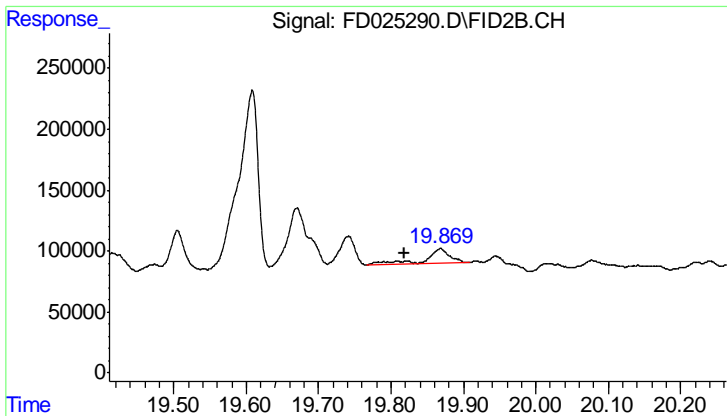
#17 n-Tricontane (C30)
R.T.: 17.448 min
Delta R.T.: -0.027 min
Response: 879799
Conc: 8.36 ug/ml



#18 n-Dotriacontane (C32)
R.T.: 18.303 min
Delta R.T.: 0.000 min
Response: 587787
Conc: 6.00 ug/ml

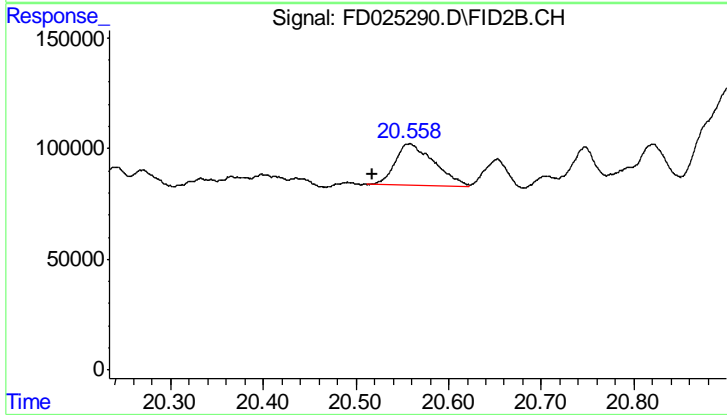


#19 n-Tetratriacontane (C34)
R.T.: 19.084 min
Delta R.T.: 0.003 min
Response: 273947
Conc: 3.12 ug/ml



#20 n-Hexatriacontane (C36)

R.T.: 19.868 min
Delta R.T.: 0.050 min
Response: 293085
Conc: 3.49 ug/ml



#21 n-Octatriacontane (C38)

R.T.: 20.558 min
Delta R.T.: 0.040 min
Response: 557353
Conc: 6.67 ug/ml