

Data Path : Z:\pestpcbsrv\HPCHEM1\FID\_D\Data\FD080320AR\  
 Data File : FD034314.D  
 Signal(s) : FID2B.CH  
 Acq On : 03 Aug 2020 18:02  
 Operator : DD\AJ  
 Sample : L3518-02  
 Misc :  
 ALS Vial : 66 Sample Multiplier: 1

Instrument :  
 FID\_D  
 ClientSampleId :

Integration File: autoint1.e  
 Quant Time: Aug 04 03:07:53 2020  
 Quant Method : Z:\pestpcbsrv\HPCHEM1\FID\_D\methods\Aromatic EPH 073120.M  
 Quant Title : GC Extractables  
 QLast Update : Mon Aug 03 10:54:15 2020  
 Response via : Initial Calibration  
 Integrator: ChemStation 6890 Scale Mode: Large solvent peaks clipped

Volume Inj. : 1 µl  
 Signal Phase : Rxi-1ms  
 Signal Info : 20M x 0.18mm x 0.18µm

Compound	R.T.	Response	Conc Units
-----			
System Monitoring Compounds			
4) S 2-Bromonaphthalene (S...	7.702	6325640	54.106 ug/ml
Spiked Amount	50.000	Recovery	= 108.21%
6) S 2-Fluorobiphenyl (SURR)	8.568	4465976	53.869 ug/ml
Spiked Amount	50.000 Range 0 - 131	Recovery	= 107.74%
11) S ortho-Terphenyl (SURR)	11.609	5508722	40.536 ug/ml
Spiked Amount	50.000	Recovery	= 81.07%

Target Compounds

(f)=RT Delta > 1/2 Window

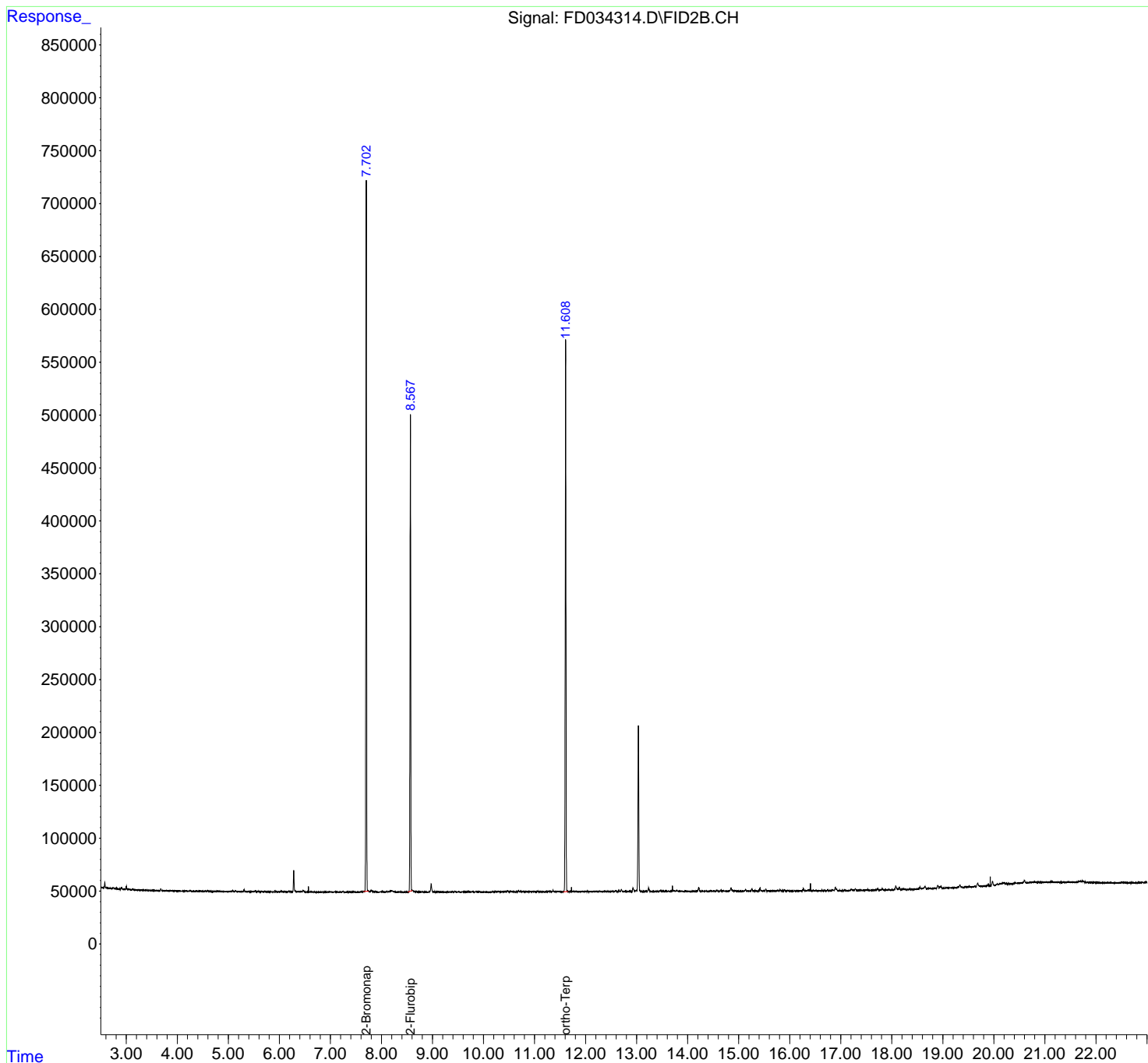
(m)=manual int.

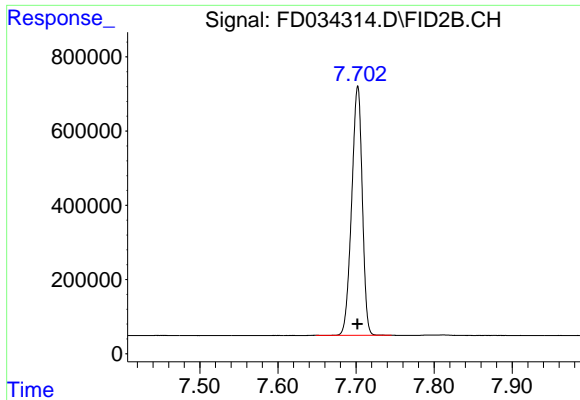
Data Path : Z:\pestpcbsrv\HPCHEM1\FID\_D\Data\FD080320AR\  
Data File : FD034314.D  
Signal(s) : FID2B.CH  
Acq On : 03 Aug 2020 18:02  
Operator : DD\AJ  
Sample : L3518-02  
Misc :  
ALS Vial : 66 Sample Multiplier: 1

Instrument :  
FID\_D  
ClientSampleId :

Integration File: autoint1.e  
Quant Time: Aug 04 03:07:53 2020  
Quant Method : Z:\pestpcbsrv\HPCHEM1\FID\_D\methods\Aromatic EPH 073120.M  
Quant Title : GC Extractables  
QLast Update : Mon Aug 03 10:54:15 2020  
Response via : Initial Calibration  
Integrator: ChemStation 6890 Scale Mode: Large solvent peaks clipped

Volume Inj. : 1 µl  
Signal Phase : Rxi-1ms  
Signal Info : 20M x 0.18mm x 0.18µm

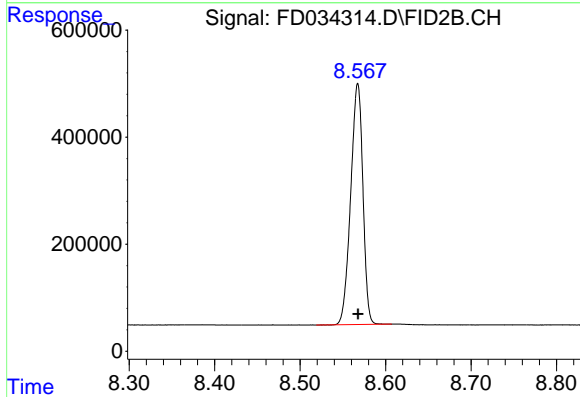




#4 2-Bromonaphthalene (SURR)

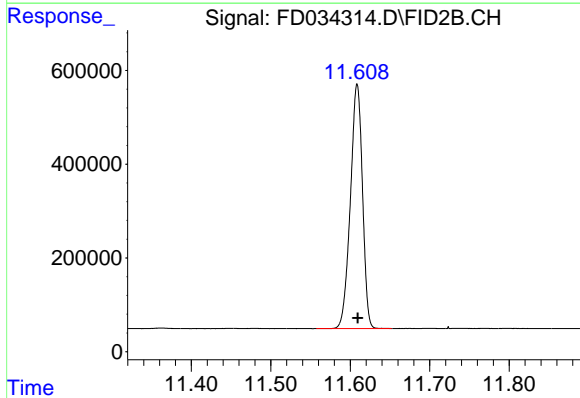
R.T.: 7.702 min  
Delta R.T.: 0.000 min  
Response: 6325640  
Conc: 54.11 ug/ml

Instrument :  
FID\_D  
ClientSampleId :



#6 2-Fluorobiphenyl (SURR)

R.T.: 8.568 min  
Delta R.T.: 0.000 min  
Response: 4465976  
Conc: 53.87 ug/ml



#11 ortho-Terphenyl (SURR)

R.T.: 11.609 min  
Delta R.T.: 0.000 min  
Response: 5508722  
Conc: 40.54 ug/ml