

Data Path : Z:\pestpcbsrv\HPCHEM1\FID_D\Data\FD080320AR\
 Data File : FD034324.D
 Signal(s) : FID2B.CH
 Acq On : 04 Aug 2020 00:21
 Operator : DD\AJ
 Sample : L3511-15RE
 Misc :
 ALS Vial : 74 Sample Multiplier: 1

Instrument :
 FID_D
 ClientSampleId :

Integration File: autoint1.e
 Quant Time: Aug 04 03:09:30 2020
 Quant Method : Z:\pestpcbsrv\HPCHEM1\FID_D\methods\Aromatic EPH 073120.M
 Quant Title : GC Extractables
 QLast Update : Mon Aug 03 10:54:15 2020
 Response via : Initial Calibration
 Integrator: ChemStation 6890 Scale Mode: Large solvent peaks clipped

Volume Inj. : 1 µl
 Signal Phase : Rxi-1ms
 Signal Info : 20M x 0.18mm x 0.18µm

Compound	R.T.	Response	Conc Units

System Monitoring Compounds			
4) S 2-Bromonaphthalene (S...	7.704	9766562	83.538 ug/ml
Spiked Amount 50.000		Recovery =	167.08%
6) S 2-Fluorobiphenyl (SURR)	8.570	6480865	78.173 ug/ml
Spiked Amount 50.000 Range 0 - 131		Recovery =	156.35%#
11) S ortho-Terphenyl (SURR)	11.613	11017630	81.074 ug/ml
Spiked Amount 50.000		Recovery =	162.15%

Target Compounds

(f)=RT Delta > 1/2 Window

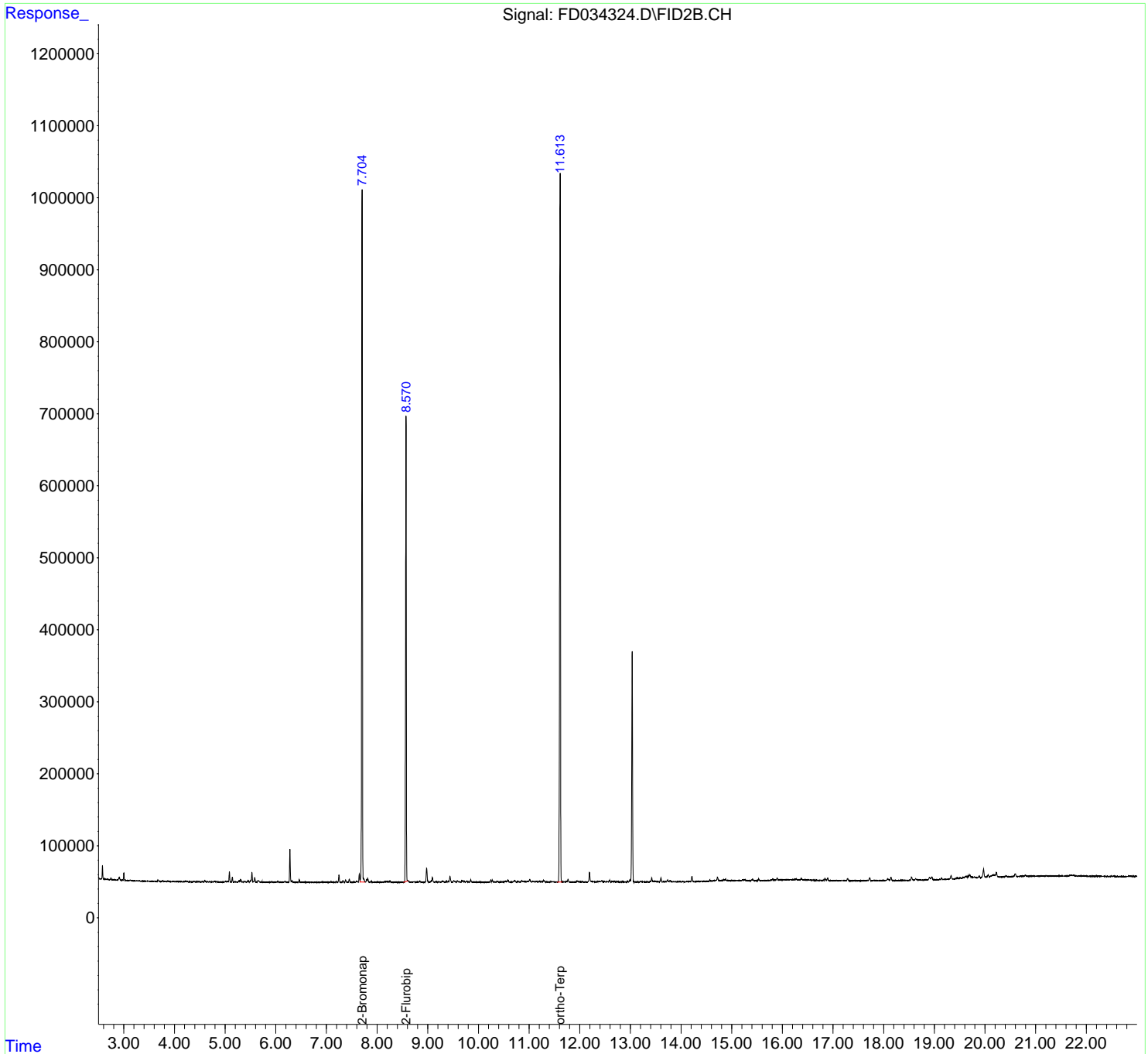
(m)=manual int.

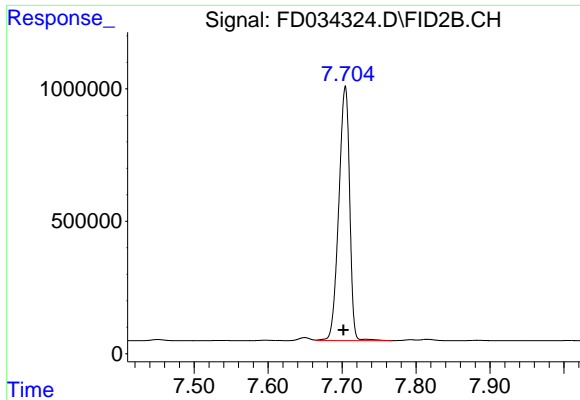
Data Path : Z:\pestpcbsrv\HPCHEM1\FID_D\Data\FD080320AR\
Data File : FD034324.D
Signal(s) : FID2B.CH
Acq On : 04 Aug 2020 00:21
Operator : DD\AJ
Sample : L3511-15RE
Misc :
ALS Vial : 74 Sample Multiplier: 1

Instrument :
FID_D
ClientSampled :

Integration File: autoint1.e
Quant Time: Aug 04 03:09:30 2020
Quant Method : Z:\pestpcbsrv\HPCHEM1\FID_D\methods\Aromatic EPH 073120.M
Quant Title : GC Extractables
QLast Update : Mon Aug 03 10:54:15 2020
Response via : Initial Calibration
Integrator: ChemStation 6890 Scale Mode: Large solvent peaks clipped

Volume Inj. : 1 µl
Signal Phase : Rxi-1ms
Signal Info : 20M x 0.18mm x 0.18µm

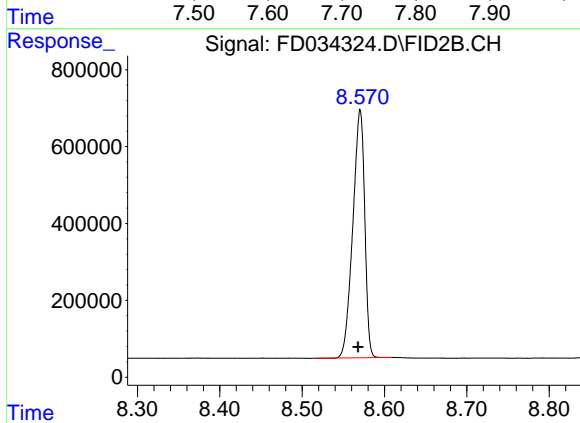




#4 2-Bromonaphthalene (SURR)

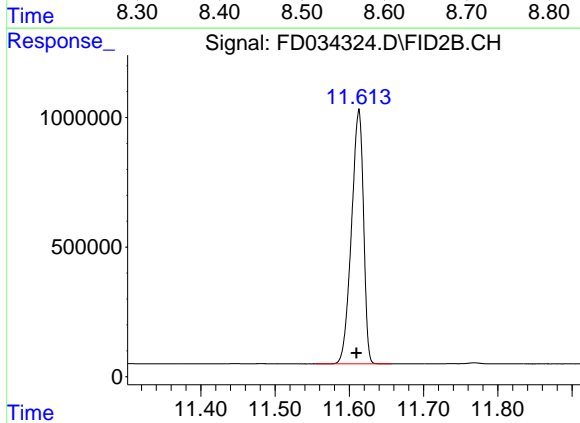
R.T.: 7.704 min
Delta R.T.: 0.003 min
Response: 9766562
Conc: 83.54 ug/ml

Instrument :
FID_D
ClientSampled :



#6 2-Fluorobiphenyl (SURR)

R.T.: 8.570 min
Delta R.T.: 0.003 min
Response: 6480865
Conc: 78.17 ug/ml



#11 ortho-Terphenyl (SURR)

R.T.: 11.613 min
Delta R.T.: 0.003 min
Response: 11017630
Conc: 81.07 ug/ml