

Data Path : Z:\pestpcbsrv\HPCHEM1\FID_D\Data\FD080819AL\
 Data File : FD029969.D
 Signal(s) : FID2B.CH
 Acq On : 08 Aug 2019 14:02
 Operator : DD\AJ
 Sample : 100 PPM ALIPHATIC HC STD1
 Misc :
 ALS Vial : 52 Sample Multiplier: 1

Instrument :
 FID_D
 ClientSampleId :
 100 PPM ALIPHATIC HC STD1

Integration File: autoint1.e
 Quant Time: Aug 08 16:24:26 2019
 Quant Method : Z:\pestpcbsrv\HPCHEM1\FID_D\methods\Alaphatic EPH 080819.M
 Quant Title : GC Extractables
 QLast Update : Thu Aug 08 16:22:32 2019
 Response via : Initial Calibration
 Integrator: ChemStation 6890 Scale Mode: Large solvent peaks clipped

Volume Inj. : 1 ul
 Signal Phase : Rxi-1ms
 Signal Info : 20M x 0.18mm x 0.18um

Compound	R.T.	Response	Conc Units
System Monitoring Compounds			
9) S ortho-Terphenyl (SURR)	11.580	13680521	107.002 ug/ml
Spiked Amount	50.000	Recovery	= 214.00%
12) S 1-chlorooctadecane (S...)	13.004	11325731	106.579 ug/ml
Spiked Amount	50.000	Recovery	= 213.16%
Target Compounds			
1) T n-Nonane (C9)	3.372	11933935	107.138 ug/ml
2) T n-Decane (C10)	4.436	12126207	107.116 ug/ml
3) T A-Naphthalene (C11.7)	6.015	13724406	107.659 ug/ml
4) T n-Dodecane (C12)	6.445	12187814	107.701 ug/ml
5) T A~2-methylnaphthalene...	7.068	13838656	107.377 ug/ml
6) T n-Tetradecane (C14)	8.232	12364242	108.216 ug/ml
7) T n-Hexadecane (C16)	9.825	12538870	108.139 ug/ml
8) T n-Octadecane (C18)	11.261	12726606	107.299 ug/ml
10) T n-Eicosane (C20)	12.562	12883507	106.666 ug/ml
11) T n-Heneicosane (C21)	13.170	12841905	106.279 ug/ml
13) T n-Docosane (C22)	13.753	12853632	105.497 ug/ml
14) T n-Tetracosane (C24)	14.848	12804337	104.317 ug/ml
15) T n-Hexacosane (C26)	15.861	12525804	103.410 ug/ml
16) T n-Octacosane (C28)	16.803	12161718	101.858 ug/ml
17) T n-Tricontane (C30)	17.683	11441135	100.539 ug/ml
18) T n-Dotriacontane (C32)	18.507	10212927	98.379 ug/ml
19) T n-Tetratriacontane (C34)	19.282	8369215	100.536 ug/ml
20) T n-Hexatriacontane (C36)	20.014	7239490	104.572 ug/ml
21) T n-Octatriacontane (C38)	20.730	6464442	103.776 ug/ml
22) T n-Tetracontane (C40)	21.606	6568130	101.096 ug/ml

(f)=RT Delta > 1/2 Window

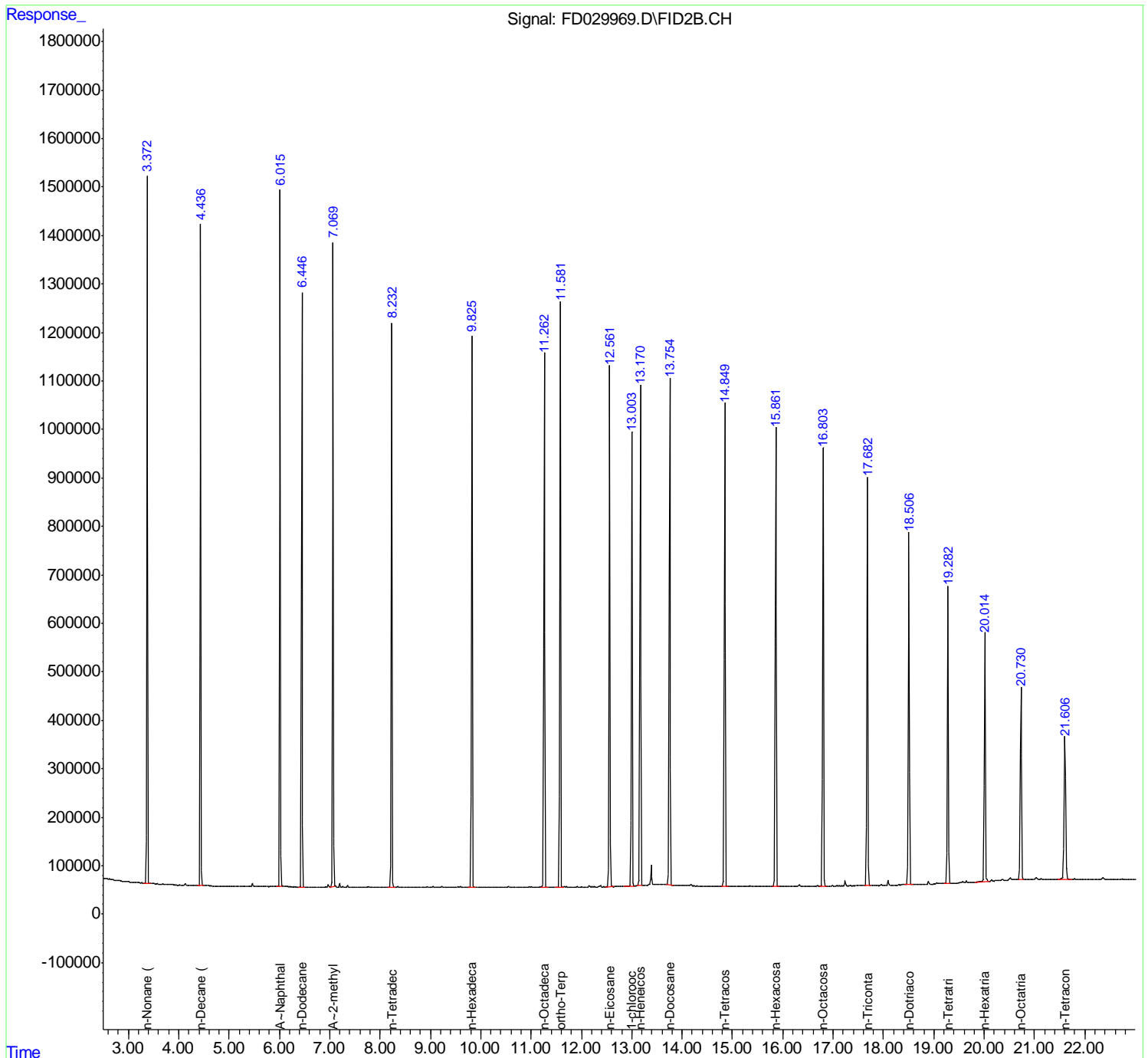
(m)=manual int.

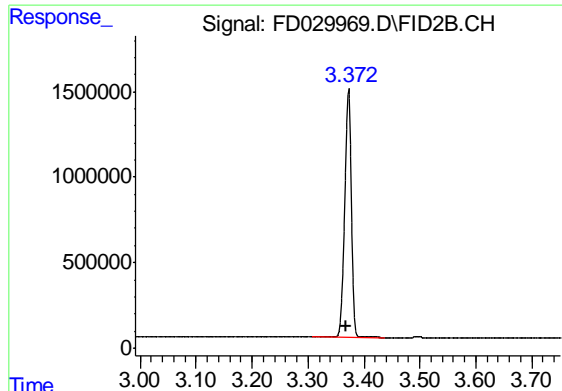
Data Path : Z:\pestpcbsrv\HPCHEM1\FID_D\Data\FD080819AL\
 Data File : FD029969.D
 Signal(s) : FID2B.CH
 Acq On : 08 Aug 2019 14:02
 Operator : DD\AJ
 Sample : 100 PPM ALIPHATIC HC STD1
 Misc :
 ALS Vial : 52 Sample Multiplier: 1

Instrument :
 FID_D
 ClientSampleId :
 100 PPM ALIPHATIC HC STD1

Integration File: autoint1.e
 Quant Time: Aug 08 16:24:26 2019
 Quant Method : Z:\pestpcbsrv\HPCHEM1\FID_D\methods\Aliphatic EPH 080819.M
 Quant Title : GC Extractables
 QLast Update : Thu Aug 08 16:22:32 2019
 Response via : Initial Calibration
 Integrator: ChemStation 6890 Scale Mode: Large solvent peaks clipped

Volume Inj. : 1 ul
 Signal Phase : Rxi-1ms
 Signal Info : 20M x 0.18mm x 0.18um

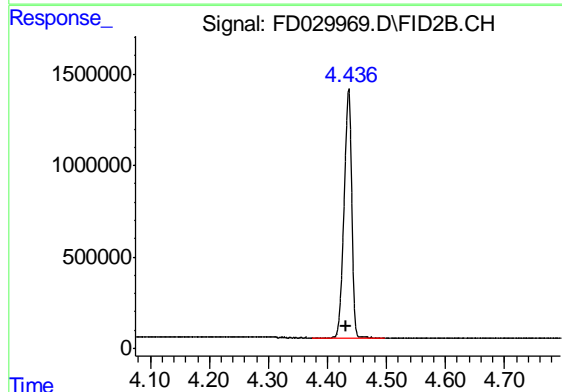




#1 n-Nonane (C9)

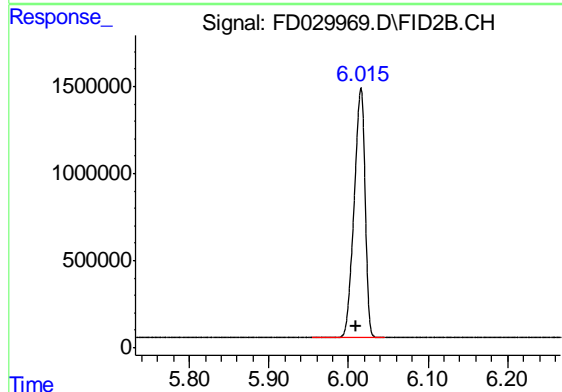
R.T.: 3.372 min
Delta R.T.: 0.003 min
Response: 11933935
Conc: 107.14 ug/ml

Instrument :
FID_D
ClientSampleId :
100 PPM ALIPHATIC HC STD1



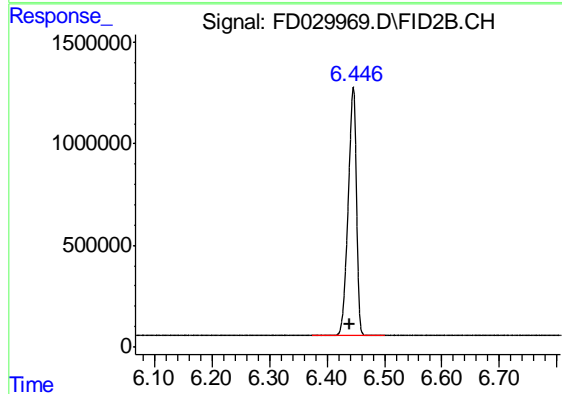
#2 n-Decane (C10)

R.T.: 4.436 min
Delta R.T.: 0.005 min
Response: 12126207
Conc: 107.12 ug/ml



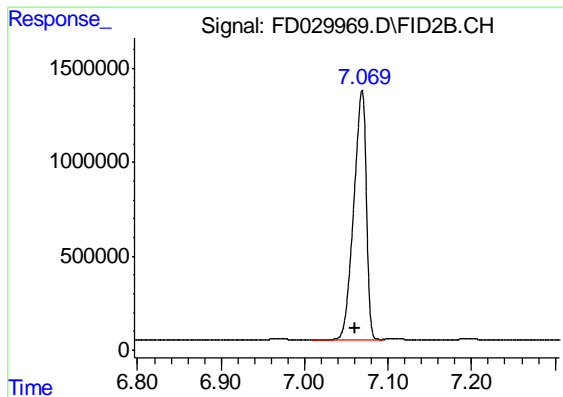
#3 A-Naphthalene (C11.7)

R.T.: 6.015 min
Delta R.T.: 0.006 min
Response: 13724406
Conc: 107.66 ug/ml



#4 n-Dodecane (C12)

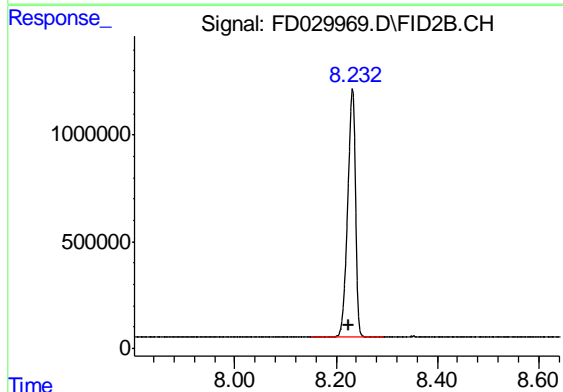
R.T.: 6.445 min
Delta R.T.: 0.006 min
Response: 12187814
Conc: 107.70 ug/ml



#5 A~2-methylnaphthalene (C12.89)

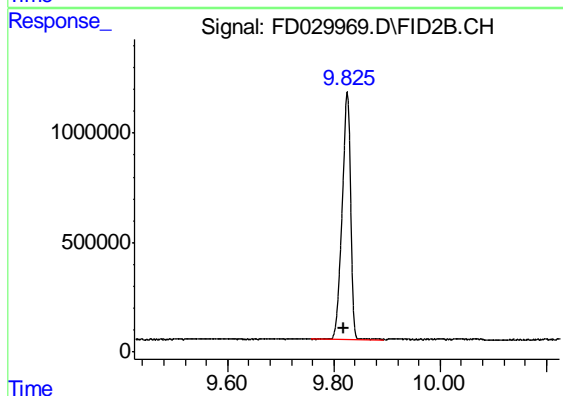
R.T.: 7.068 min
 Delta R.T.: 0.008 min
 Response: 13838656
 Conc: 107.38 ug/ml

Instrument :
 FID_D
 ClientSampleId :
 100 PPM ALIPHATIC HC STD1



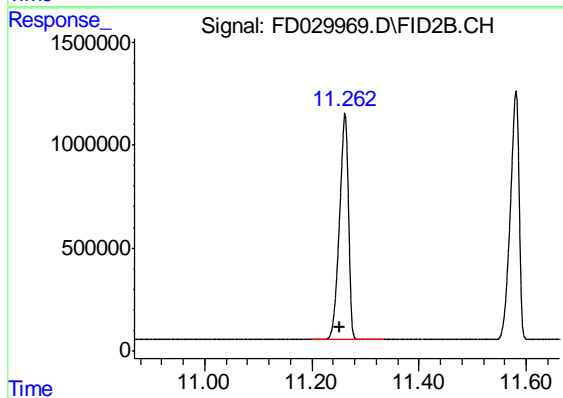
#6 n-Tetradecane (C14)

R.T.: 8.232 min
 Delta R.T.: 0.007 min
 Response: 12364242
 Conc: 108.22 ug/ml



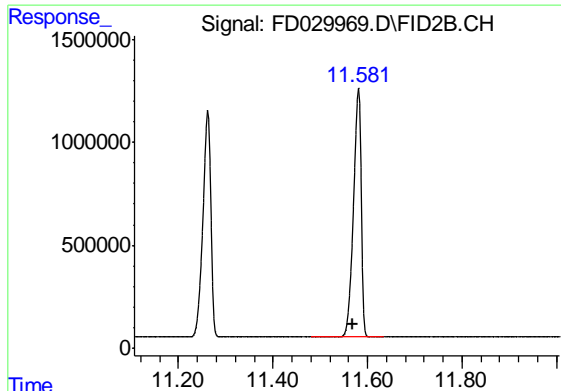
#7 n-Hexadecane (C16)

R.T.: 9.825 min
 Delta R.T.: 0.007 min
 Response: 12538870
 Conc: 108.14 ug/ml



#8 n-Octadecane (C18)

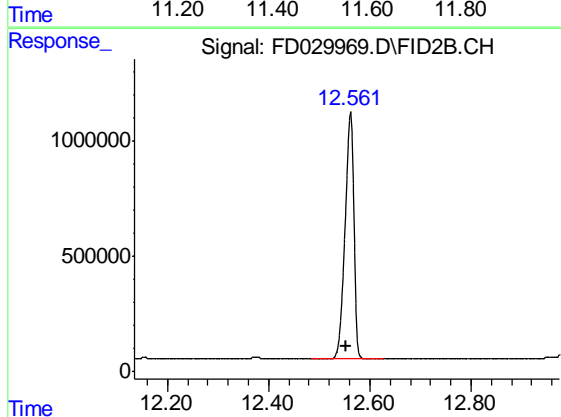
R.T.: 11.261 min
 Delta R.T.: 0.010 min
 Response: 12726606
 Conc: 107.30 ug/ml



#9 ortho-Terphenyl (SURR)

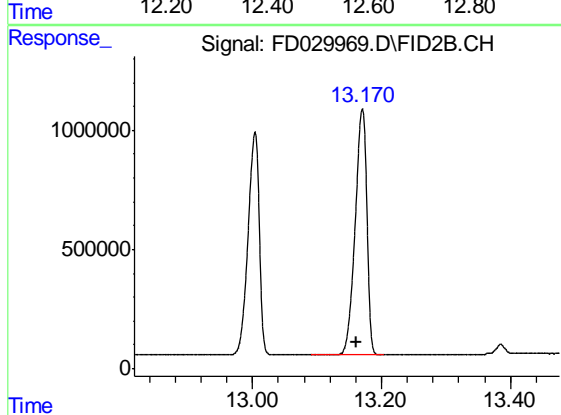
R.T.: 11.580 min
 Delta R.T.: 0.011 min
 Response: 13680521
 Conc: 107.00 ug/ml

Instrument :
 FID_D
 ClientSampleId :
 100 PPM ALIPHATIC HC STD1



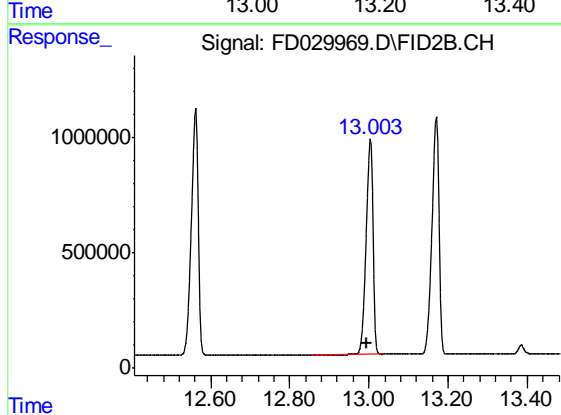
#10 n-Eicosane (C20)

R.T.: 12.562 min
 Delta R.T.: 0.009 min
 Response: 12883507
 Conc: 106.67 ug/ml



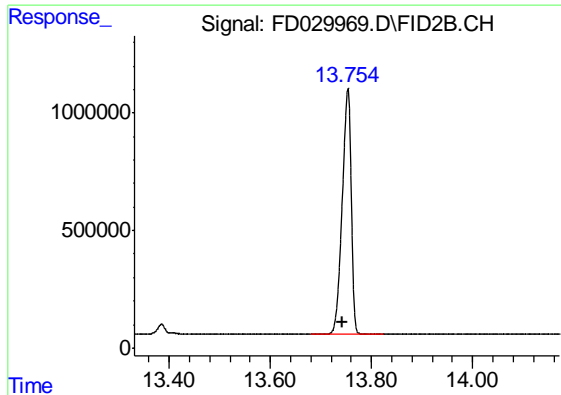
#11 n-Heneicosane (C21)

R.T.: 13.170 min
 Delta R.T.: 0.010 min
 Response: 12841905
 Conc: 106.28 ug/ml



#12 1-chlorooctadecane (SURR)

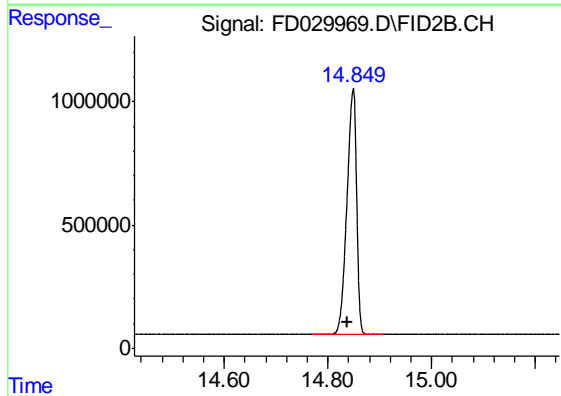
R.T.: 13.004 min
 Delta R.T.: 0.009 min
 Response: 11325731
 Conc: 106.58 ug/ml



#13 n-Docosane (C22)

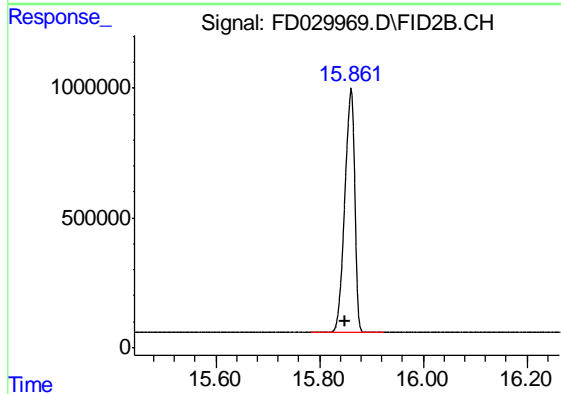
R.T.: 13.753 min
Delta R.T.: 0.011 min
Response: 12853632
Conc: 105.50 ug/ml

Instrument :
FID_D
ClientSampleId :
100 PPM ALIPHATIC HC STD1



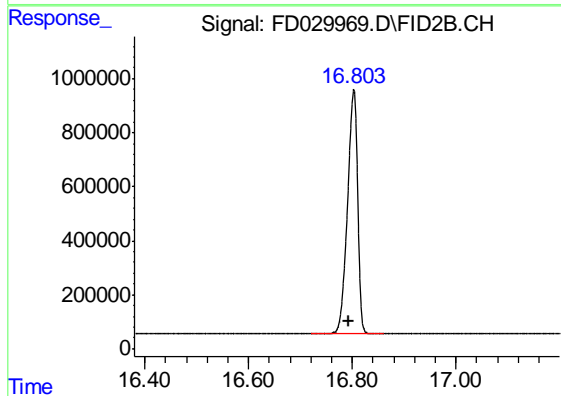
#14 n-Tetracosane (C24)

R.T.: 14.848 min
Delta R.T.: 0.011 min
Response: 12804337
Conc: 104.32 ug/ml



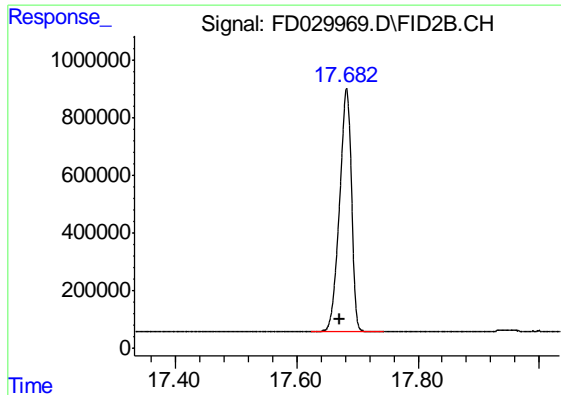
#15 n-Hexacosane (C26)

R.T.: 15.861 min
Delta R.T.: 0.011 min
Response: 12525804
Conc: 103.41 ug/ml



#16 n-Octacosane (C28)

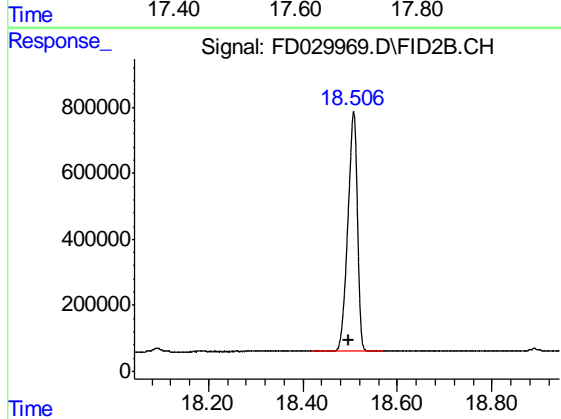
R.T.: 16.803 min
Delta R.T.: 0.010 min
Response: 12161718
Conc: 101.86 ug/ml



#17 n-Tricontane (C30)

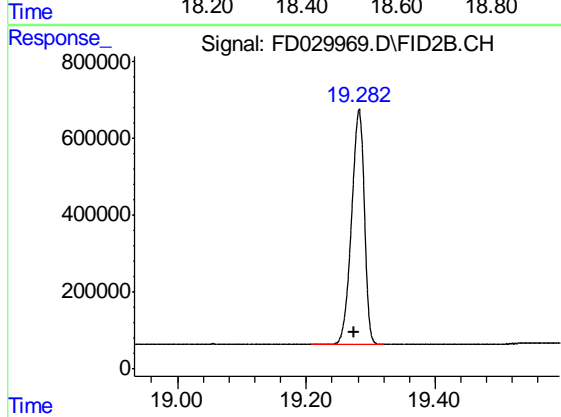
R.T.: 17.683 min
 Delta R.T.: 0.010 min
 Response: 11441135
 Conc: 100.54 ug/ml

Instrument :
 FID_D
 ClientSampleId :
 100 PPM ALIPHATIC HC STD1



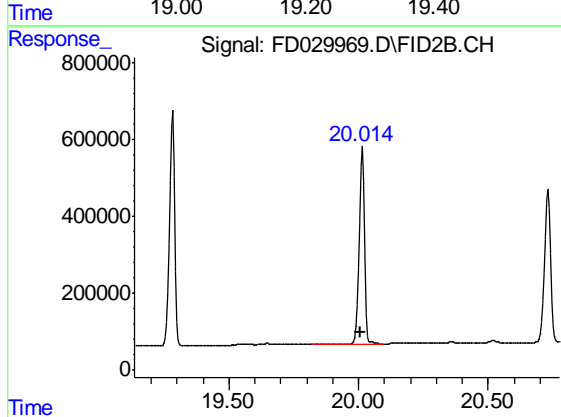
#18 n-Dotriacontane (C32)

R.T.: 18.507 min
 Delta R.T.: 0.009 min
 Response: 10212927
 Conc: 98.38 ug/ml



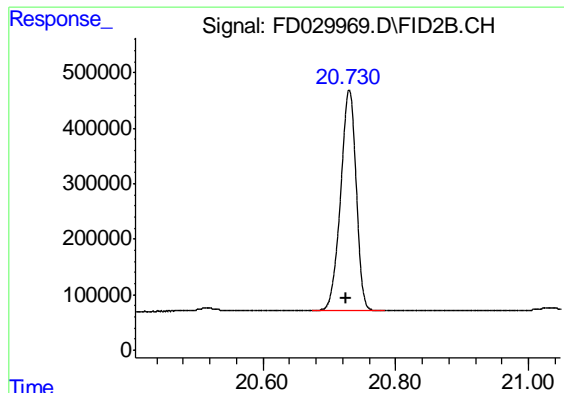
#19 n-Tetracontane (C34)

R.T.: 19.282 min
 Delta R.T.: 0.007 min
 Response: 8369215
 Conc: 100.54 ug/ml



#20 n-Hexatriacontane (C36)

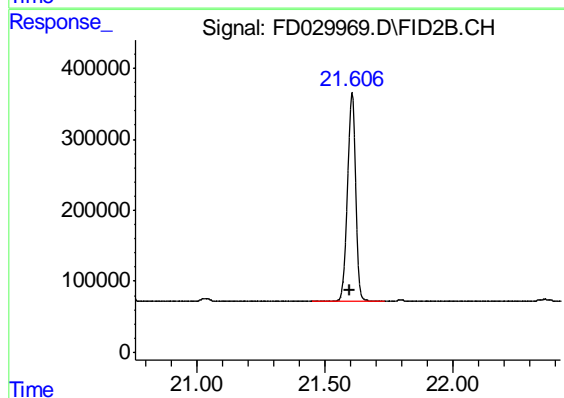
R.T.: 20.014 min
 Delta R.T.: 0.007 min
 Response: 7239490
 Conc: 104.57 ug/ml



#21 n-Octatriacontane (C38)

R.T.: 20.730 min
Delta R.T.: 0.005 min
Response: 6464442
Conc: 103.78 ug/ml

Instrument :
FID_D
ClientSampleId :
100 PPM ALIPHATIC HC STD1



#22 n-Tetracontane (C40)

R.T.: 21.606 min
Delta R.T.: 0.007 min
Response: 6568130
Conc: 101.10 ug/ml