

Data Path : Z:\pestpcbsrv\HPCHEM1\FID\_D\Data\FD081018AL\  
 Data File : FD025344.D  
 Signal(s) : FID2B.CH  
 Acq On : 10 Aug 2018 14:44  
 Operator : AJ\SJ  
 Sample : J4398-02  
 Misc :  
 ALS Vial : 55 Sample Multiplier: 1

Integration File: autoint1.e  
 Quant Time: Aug 11 05:15:51 2018  
 Quant Method : Z:\pestpcbsrv\HPCHEM1\FID\_D\methods\Alaphatic EPH 080218.M  
 Quant Title : GC Extractables  
 QLast Update : Thu Aug 02 16:12:55 2018  
 Response via : Initial Calibration  
 Integrator: ChemStation 6890 Scale Mode: Large solvent peaks clipped

Volume Inj. : 1 ul  
 Signal Phase : Rxi-lms  
 Signal Info : 20M x 0.18mm x 0.18um

Compound	R.T.	Response	Conc Units
-----			
System Monitoring Compounds			
9) S ortho-Terphenyl (SURR)	11.334	2502368	29.788 ug/ml
Spiked Amount	50.000	Recovery	= 59.58%
12) S 1-chlorooctadecane (S...	12.776	1688349	24.490 ug/ml
Spiked Amount	50.000	Recovery	= 48.98%

Target Compounds

-----

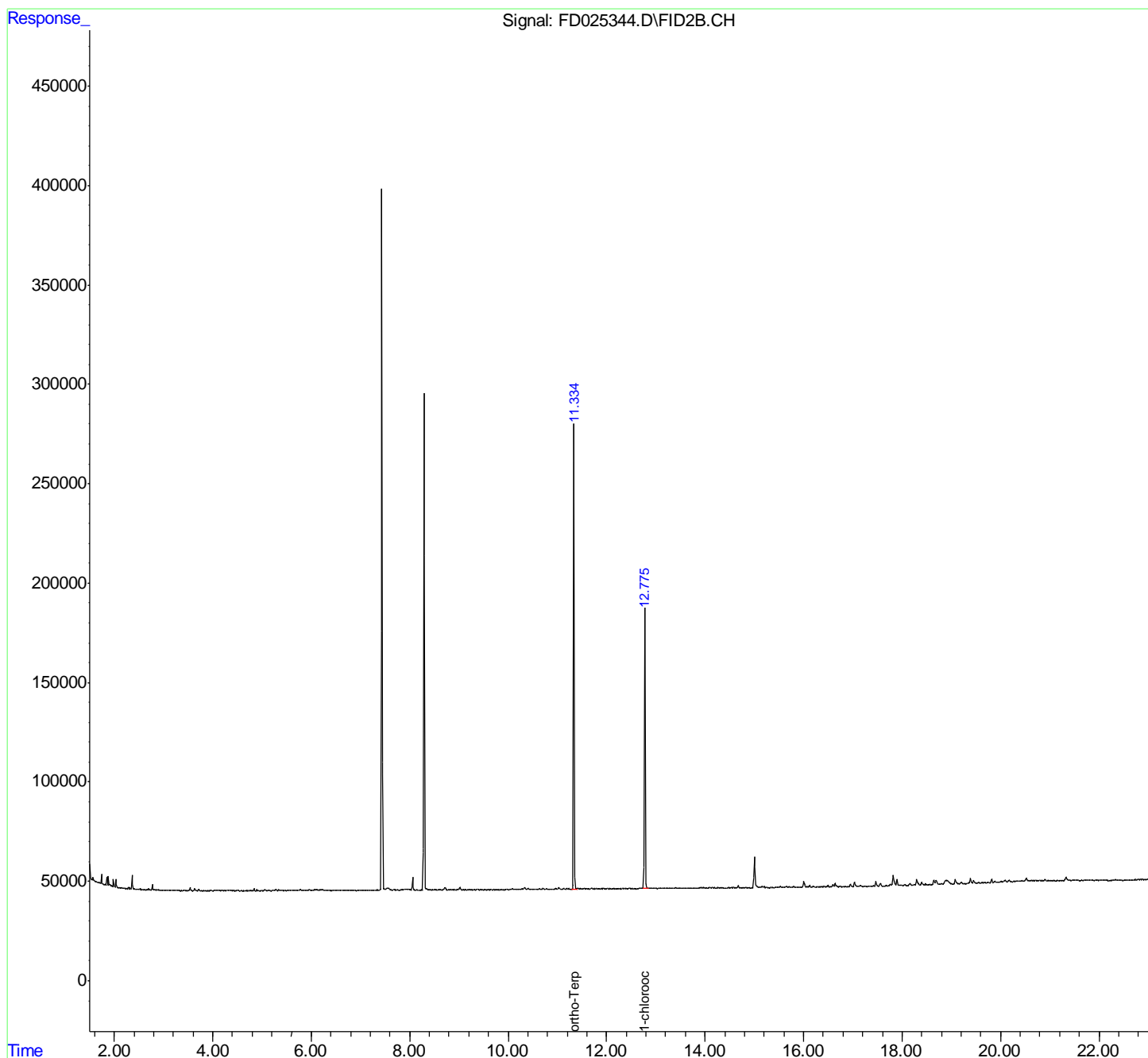
(f)=RT Delta > 1/2 Window

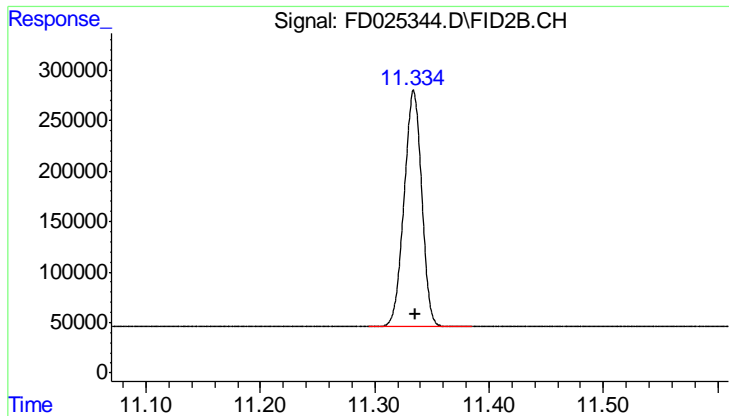
(m)=manual int.

Data Path : Z:\pestpcbsrv\HPCHEM1\FID\_D\Data\FD081018AL\  
Data File : FD025344.D  
Signal(s) : FID2B.CH  
Acq On : 10 Aug 2018 14:44  
Operator : AJ\SJ  
Sample : J4398-02  
Misc :  
ALS Vial : 55 Sample Multiplier: 1

Integration File: autoint1.e  
Quant Time: Aug 11 05:15:51 2018  
Quant Method : Z:\pestpcbsrv\HPCHEM1\FID\_D\methods\Alaphatic EPH 080218.M  
Quant Title : GC Extractables  
QLast Update : Thu Aug 02 16:12:55 2018  
Response via : Initial Calibration  
Integrator: ChemStation 6890 Scale Mode: Large solvent peaks clipped

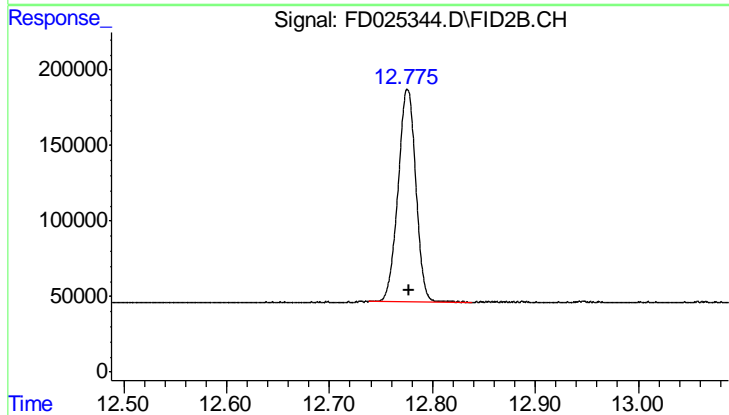
Volume Inj. : 1 ul  
Signal Phase : Rxi-lms  
Signal Info : 20M x 0.18mm x 0.18um





#9 ortho-Terphenyl (SURR)

R.T.: 11.334 min  
Delta R.T.: -0.002 min  
Response: 2502368  
Conc: 29.79 ug/ml



#12 1-chlorooctadecane (SURR)

R.T.: 12.776 min  
Delta R.T.: -0.002 min  
Response: 1688349  
Conc: 24.49 ug/ml