

Data Path : Z:\pestpcbsrv\HPCHEM1\FID_D\Data\FD081021AL\
 Data File : FD038499.D
 Signal(s) : FID2B.CH
 Acq On : 11 Aug 2021 14:10
 Operator : AJ\MA
 Sample : 20 PPM ALIPHATIC HC STD
 Misc :
 ALS Vial : 57 Sample Multiplier: 1

Instrument :
 FID_D
 ClientSampleId :
 20 PPM ALIPHATIC HC STD

Manual Integrations
 APPROVED

mohammad
 8/12/2021 11:55:34 AM

Integration File: sample.E
 Quant Time: Aug 11 15:42:15 2021
 Quant Method : Z:\pestpcbsrv\HPCHEM1\FID_D\methods\Alaphatic EPH 080321.M
 Quant Title : GC Extractables
 QLast Update : Wed Aug 04 03:20:37 2021
 Response via : Initial Calibration
 Integrator: ChemStation 6890 Scale Mode: Large solvent peaks clipped

Volume Inj. : 1 ul
 Signal Phase : Rxi-1ms
 Signal Info : 20M x 0.18mm x 0.18um

Compound	R.T.	Response	Conc Units

System Monitoring Compounds			
9) S ortho-Terphenyl (SURR)	11.370	2489181	18.235 ug/ml
Spiked Amount	50.000	Recovery	= 36.47%
12) S 1-chlorooctadecane (S...	12.807	1927563	17.925 ug/ml
Spiked Amount	50.000	Recovery	= 35.85%
Target Compounds			
1) T n-Nonane (C9)	3.195	2358469	20.089 ug/ml
2) T n-Decane (C10)	4.248	2397615	20.335 ug/ml
3) T A~Naphthalene (C11.7)	5.814	2638561	20.213 ug/ml
4) T n-Dodecane (C12)	6.251	2414160	20.331 ug/ml
5) T A~2-methylnaphthalene...	6.865	2655445	20.293 ug/ml
6) T n-Tetradecane (C14)	8.036	2431465	20.006 ug/ml
7) T n-Hexadecane (C16)	9.629	2406996	19.695 ug/ml
8) T n-Octadecane (C18)	11.063	2411707	19.155 ug/ml
10) T n-Eicosane (C20)	12.366	2313709	18.355 ug/ml
11) T n-Heneicosane (C21)	12.975	2299012	18.010 ug/ml
13) T n-Docosane (C22)	13.558	2244081	17.628 ug/ml
14) T n-Tetracosane (C24)	14.657	2175616	16.913 ug/ml
15) T n-Hexacosane (C26)	15.673	2055434	16.140 ug/ml
16) T n-Octacosane (C28)	16.619	1997535	15.657 ug/ml
17) T n-Tricontane (C30)	17.503	1944771	15.350 ug/ml
18) T n-Dotriacontane (C32)	18.333	1921281	15.636 ug/mlm
19) T n-Tetratriacontane (C34)	19.113	2007944	16.824 ug/ml
20) T n-Hexatriacontane (C36)	19.850	1999332	17.939 ug/mlm
21) T n-Octatriacontane (C38)	20.551	2098863	20.303 ug/mlm
22) T n-Tetracontane (C40)	21.364	2377977	23.692 ug/mlm

(f)=RT Delta > 1/2 Window

(m)=manual int.

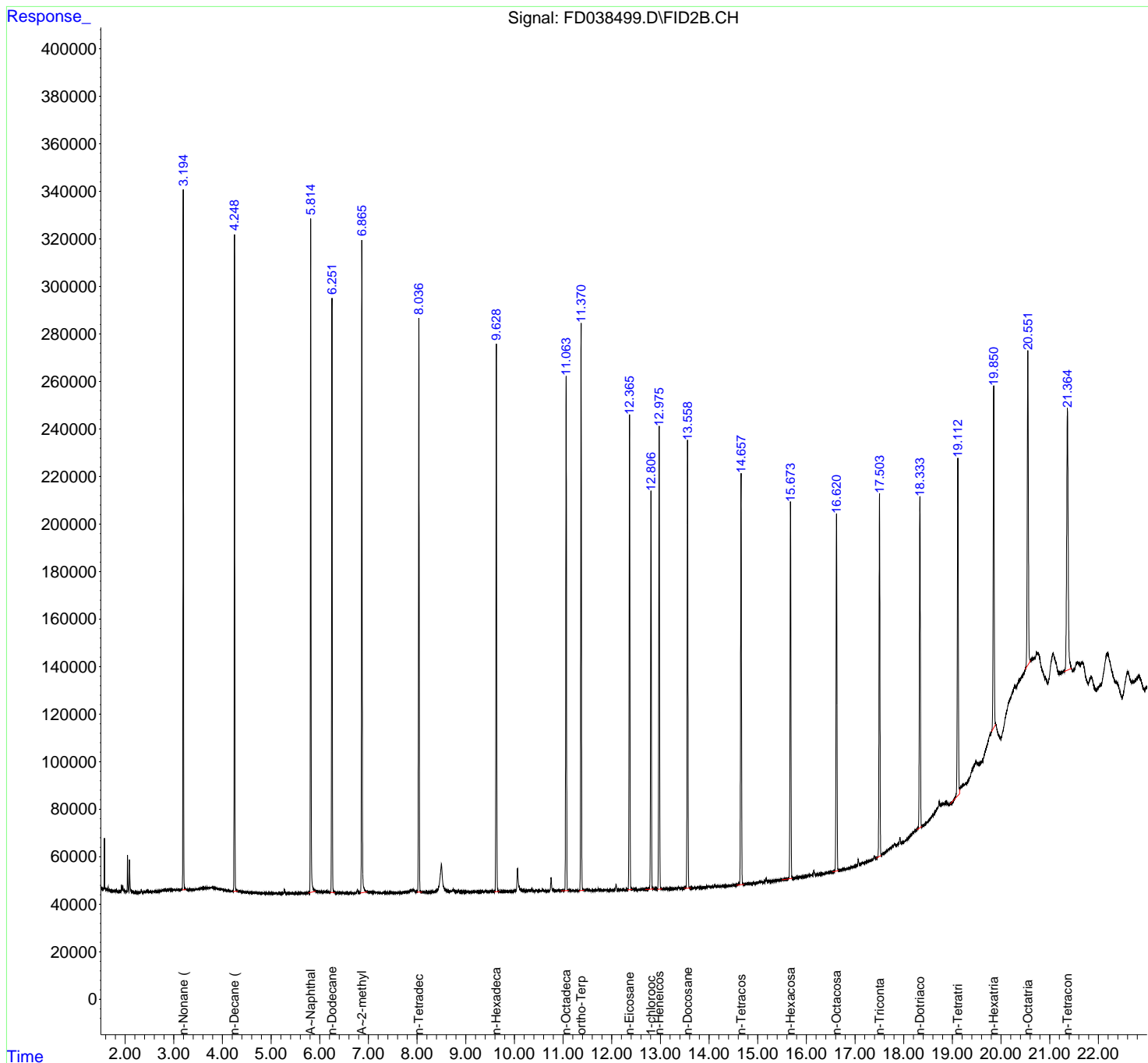
Data Path : Z:\pestpcbsrv\HPCHEM1\FID_D\Data\FD081021AL\
 Data File : FD038499.D
 Signal(s) : FID2B.CH
 Acq On : 11 Aug 2021 14:10
 Operator : AJ\MA
 Sample : 20 PPM ALIPHATIC HC STD
 Misc :
 ALS Vial : 57 Sample Multiplier: 1

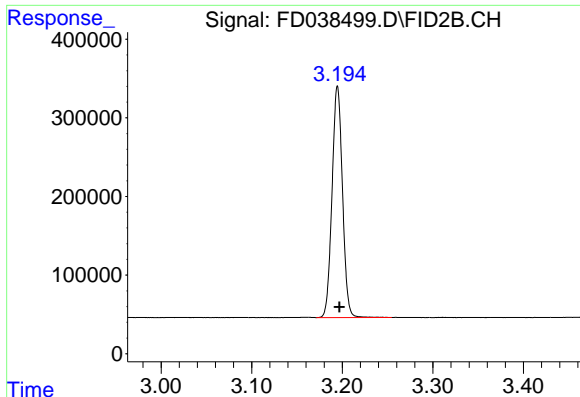
Instrument :
 FID_D
Client Sampled :
 20 PPM ALIPHATIC HC STD

Manual Integrations
APPROVED
 mohammad
 8/12/2021 11:55:34 AM

Integration File: sample.E
 Quant Time: Aug 11 15:42:15 2021
 Quant Method : Z:\pestpcbsrv\HPCHEM1\FID_D\methods\Alaphatic EPH 080321.M
 Quant Title : GC Extractables
 QLast Update : Wed Aug 04 03:20:37 2021
 Response via : Initial Calibration
 Integrator: ChemStation 6890 Scale Mode: Large solvent peaks clipped

Volume Inj. : 1 ul
 Signal Phase : Rxi-1ms
 Signal Info : 20M x 0.18mm x 0.18um





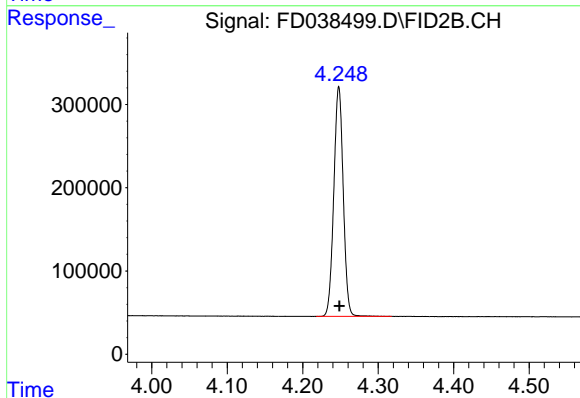
#1 n-Nonane (C9)

R.T.: 3.195 min
 Delta R.T.: -0.002 min
 Response: 2358469
 Conc: 20.09 ug/ml

Instrument :
 FID_D
 ClientSampled :
 20 PPM ALIPHATIC HC STD

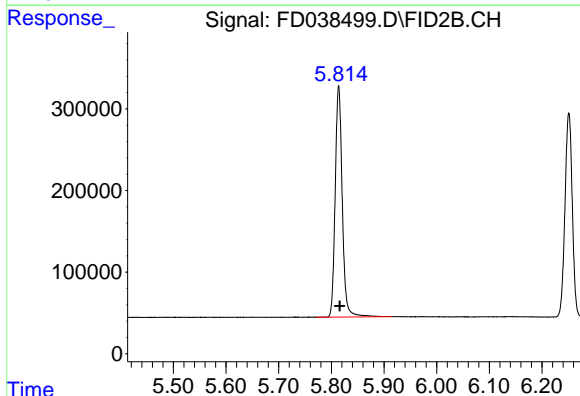
Manual Integrations
 APPROVED

mohammad
 8/12/2021 11:55:34 AM



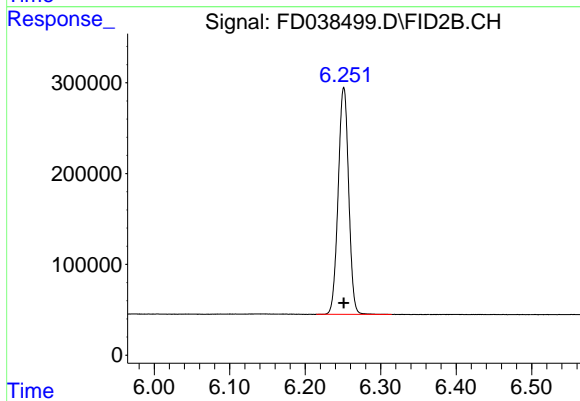
#2 n-Decane (C10)

R.T.: 4.248 min
 Delta R.T.: 0.000 min
 Response: 2397615
 Conc: 20.34 ug/ml



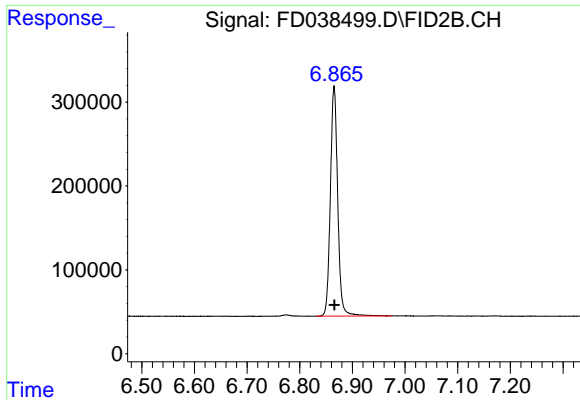
#3 A~Naphthalene (C11.7)

R.T.: 5.814 min
 Delta R.T.: -0.002 min
 Response: 2638561
 Conc: 20.21 ug/ml



#4 n-Dodecane (C12)

R.T.: 6.251 min
 Delta R.T.: 0.000 min
 Response: 2414160
 Conc: 20.33 ug/ml

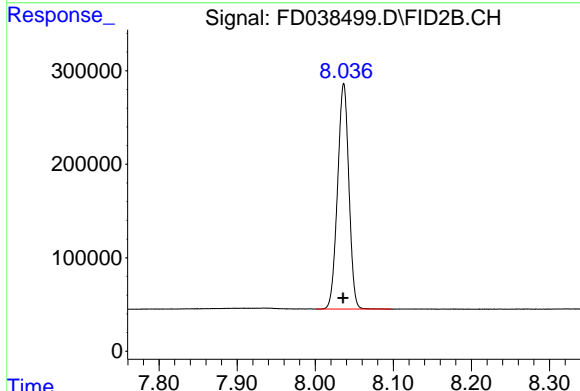


#5 A~2-methylnaphthalene (C12.89)

R.T.: 6.865 min
 Delta R.T.: 0.000 min
 Response: 2655445
 Conc: 20.29 ug/ml

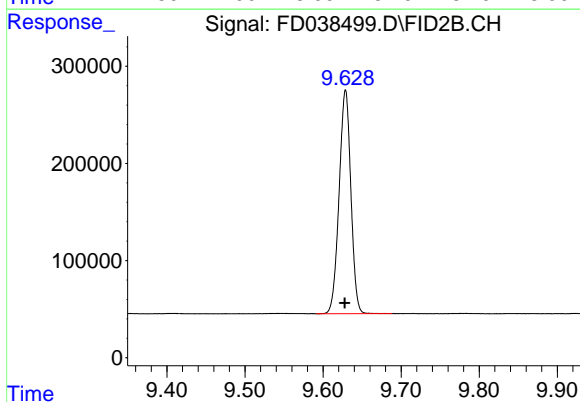
Instrument :
 FID_D
ClientSampled :
 20 PPM ALIPHATIC HC STD

Manual Integrations
APPROVED
 mohammad
 8/12/2021 11:55:34 AM



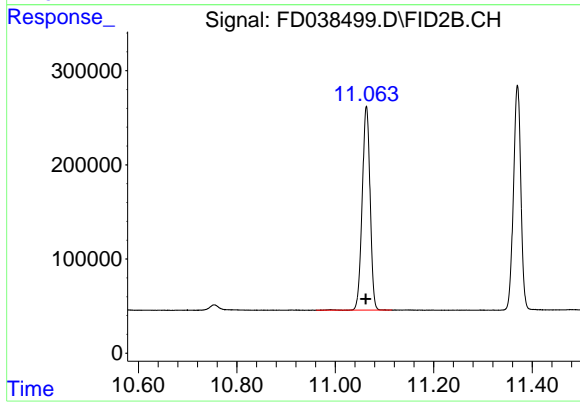
#6 n-Tetradecane (C14)

R.T.: 8.036 min
 Delta R.T.: 0.000 min
 Response: 2431465
 Conc: 20.01 ug/ml



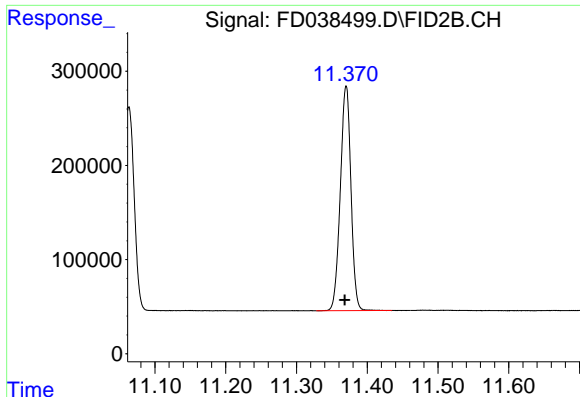
#7 n-Hexadecane (C16)

R.T.: 9.629 min
 Delta R.T.: 0.000 min
 Response: 2406996
 Conc: 19.69 ug/ml



#8 n-Octadecane (C18)

R.T.: 11.063 min
 Delta R.T.: 0.002 min
 Response: 2411707
 Conc: 19.16 ug/ml



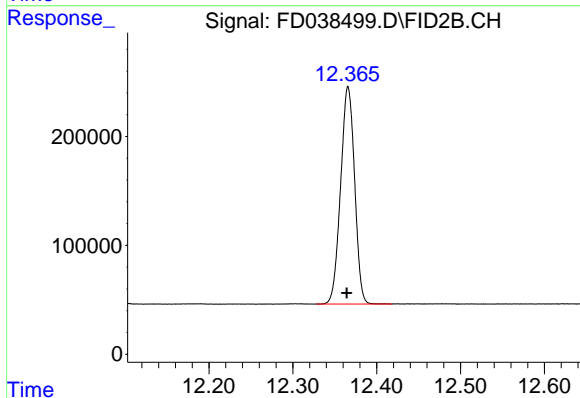
#9 ortho-Terphenyl (SURR)

R.T.: 11.370 min
 Delta R.T.: 0.002 min
 Response: 2489181
 Conc: 18.24 ug/ml

Instrument :
 FID_D
 ClientSampleId :
 20 PPM ALIPHATIC HC STD

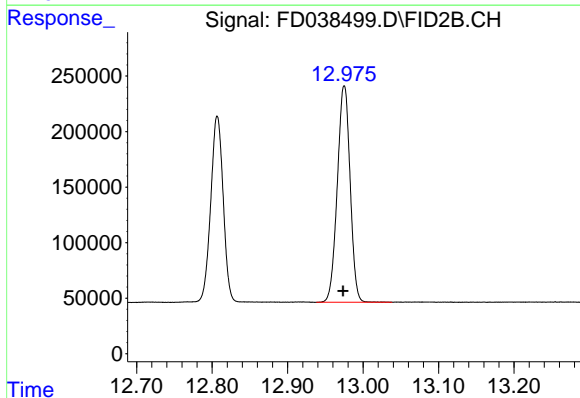
Manual Integrations
 APPROVED

mohammad
 8/12/2021 11:55:34 AM



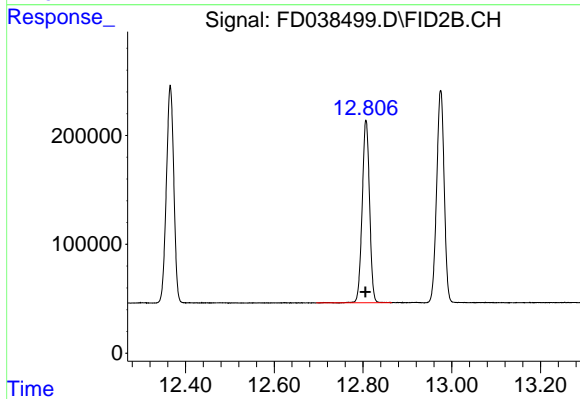
#10 n-Eicosane (C20)

R.T.: 12.366 min
 Delta R.T.: 0.002 min
 Response: 2313709
 Conc: 18.35 ug/ml



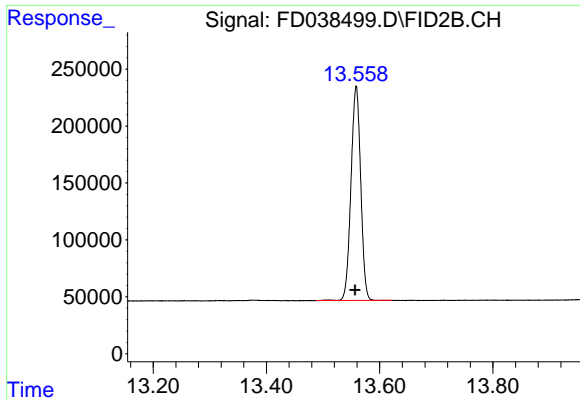
#11 n-Heneicosane (C21)

R.T.: 12.975 min
 Delta R.T.: 0.001 min
 Response: 2299012
 Conc: 18.01 ug/ml



#12 1-chlorooctadecane (SURR)

R.T.: 12.807 min
 Delta R.T.: 0.001 min
 Response: 1927563
 Conc: 17.93 ug/ml



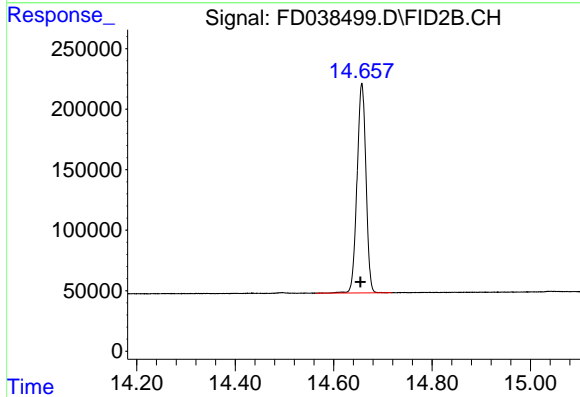
#13 n-Docosane (C22)

R.T.: 13.558 min
Delta R.T.: 0.002 min
Response: 2244081
Conc: 17.63 ug/ml

Instrument :
FID_D
ClientSampleId :
20 PPM ALIPHATIC HC STD

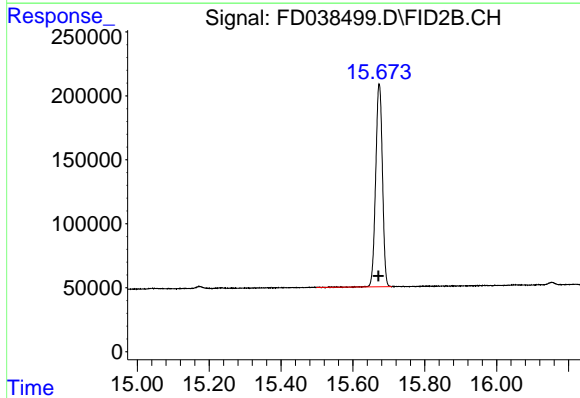
Manual Integrations
APPROVED

mohammad
8/12/2021 11:55:34 AM



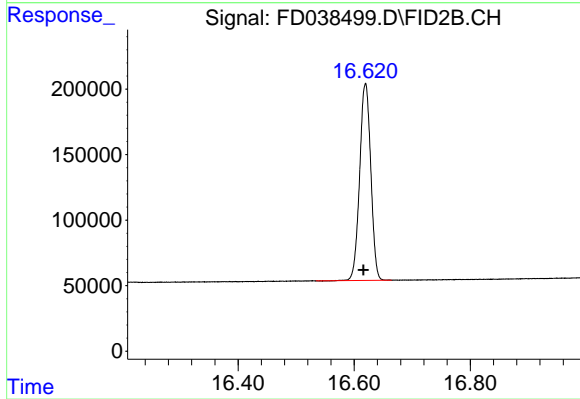
#14 n-Tetracosane (C24)

R.T.: 14.657 min
Delta R.T.: 0.003 min
Response: 2175616
Conc: 16.91 ug/ml



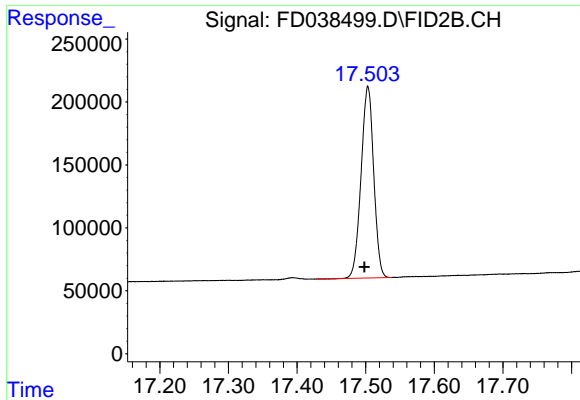
#15 n-Hexacosane (C26)

R.T.: 15.673 min
Delta R.T.: 0.002 min
Response: 2055434
Conc: 16.14 ug/ml



#16 n-Octacosane (C28)

R.T.: 16.619 min
Delta R.T.: 0.004 min
Response: 1997535
Conc: 15.66 ug/ml

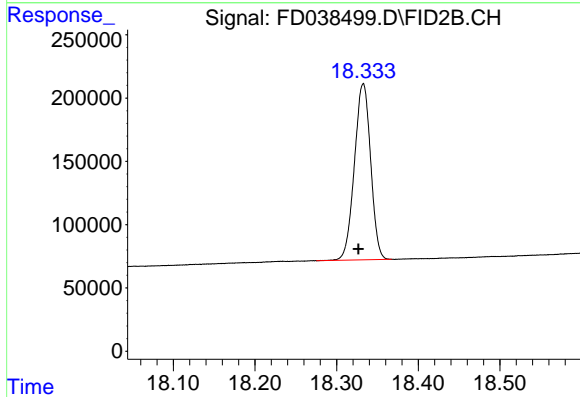


#17 n-Tricontane (C30)
R.T.: 17.503 min
Delta R.T.: 0.005 min
Response: 1944771
Conc: 15.35 ug/ml

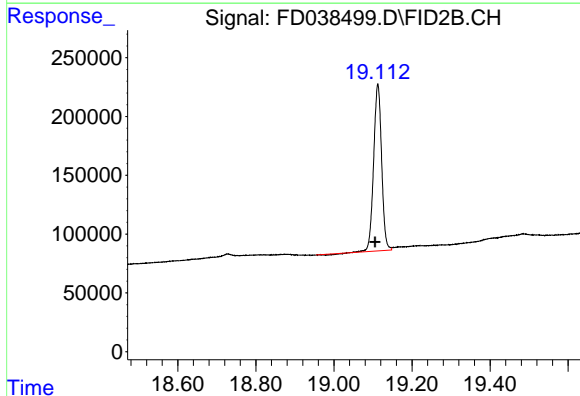
Instrument :
FID_D
ClientSampled :
20 PPM ALIPHATIC HC STD

Manual Integrations
APPROVED

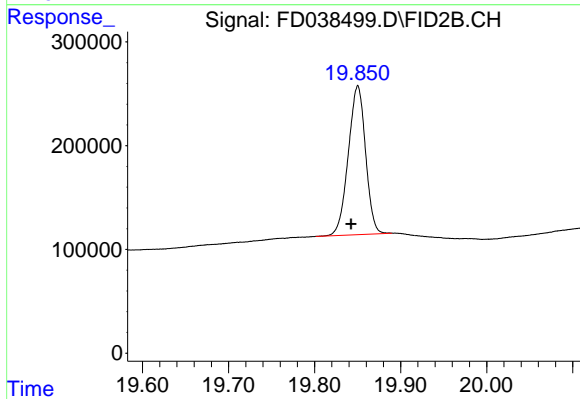
mohammad
8/12/2021 11:55:34 AM



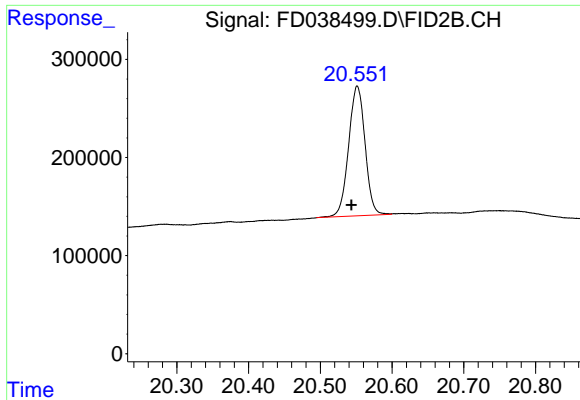
#18 n-Dotriacontane (C32)
R.T.: 18.333 min
Delta R.T.: 0.006 min
Response: 1921281
Conc: 15.64 ug/ml m



#19 n-Tetratriacontane (C34)
R.T.: 19.113 min
Delta R.T.: 0.007 min
Response: 2007944
Conc: 16.82 ug/ml



#20 n-Hexatriacontane (C36)
R.T.: 19.850 min
Delta R.T.: 0.008 min
Response: 1999332
Conc: 17.94 ug/ml m



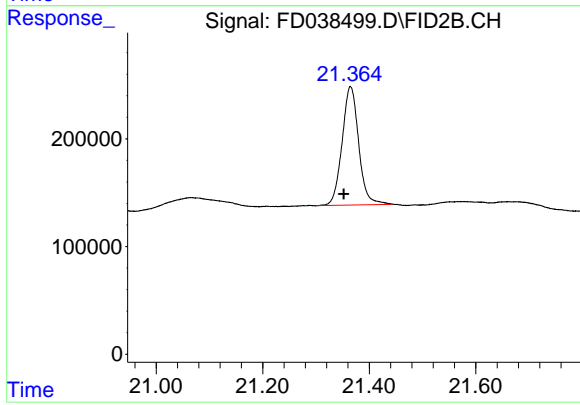
#21 n-Octatriacontane (C38)

R.T.: 20.551 min
Delta R.T.: 0.007 min
Response: 2098863
Conc: 20.30 ug/ml m

Instrument :
FID_D
ClientSampleId :
20 PPM ALIPHATIC HC STD

Manual Integrations
APPROVED

mohammad
8/12/2021 11:55:34 AM



#22 n-Tetracontane (C40)

R.T.: 21.364 min
Delta R.T.: 0.012 min
Response: 2377977
Conc: 23.69 ug/ml m