

Data Path : Z:\pestpcbsrv\HPCHEM1\FID_D\Data\FD081419AL\
 Data File : FD030052.D
 Signal(s) : FID2B.CH
 Acq On : 13 Aug 2019 15:37
 Operator : DD\AJ
 Sample : K4241-02
 Misc :
 ALS Vial : 54 Sample Multiplier: 1

Integration File: autoint1.e
 Quant Time: Aug 13 17:38:29 2019
 Quant Method : Z:\pestpcbsrv\HPCHEM1\FID_D\methods\Alaphatic EPH 080819.M
 Quant Title : GC Extractables
 QLast Update : Thu Aug 08 17:24:17 2019
 Response via : Initial Calibration
 Integrator: ChemStation 6890 Scale Mode: Large solvent peaks clipped

Volume Inj. : 1 ul
 Signal Phase : Rxi-1ms
 Signal Info : 20M x 0.18mm x 0.18um

Compound	R.T.	Response	Conc Units

System Monitoring Compounds			
9) S ortho-Terphenyl (SURR)	11.567	5732002	41.701 ug/ml
Spiked Amount	50.000	Recovery =	83.40%
12) S 1-chlorooctadecane (S...	12.992	4282926	37.552 ug/ml
Spiked Amount	50.000	Recovery =	75.10%

Target Compounds

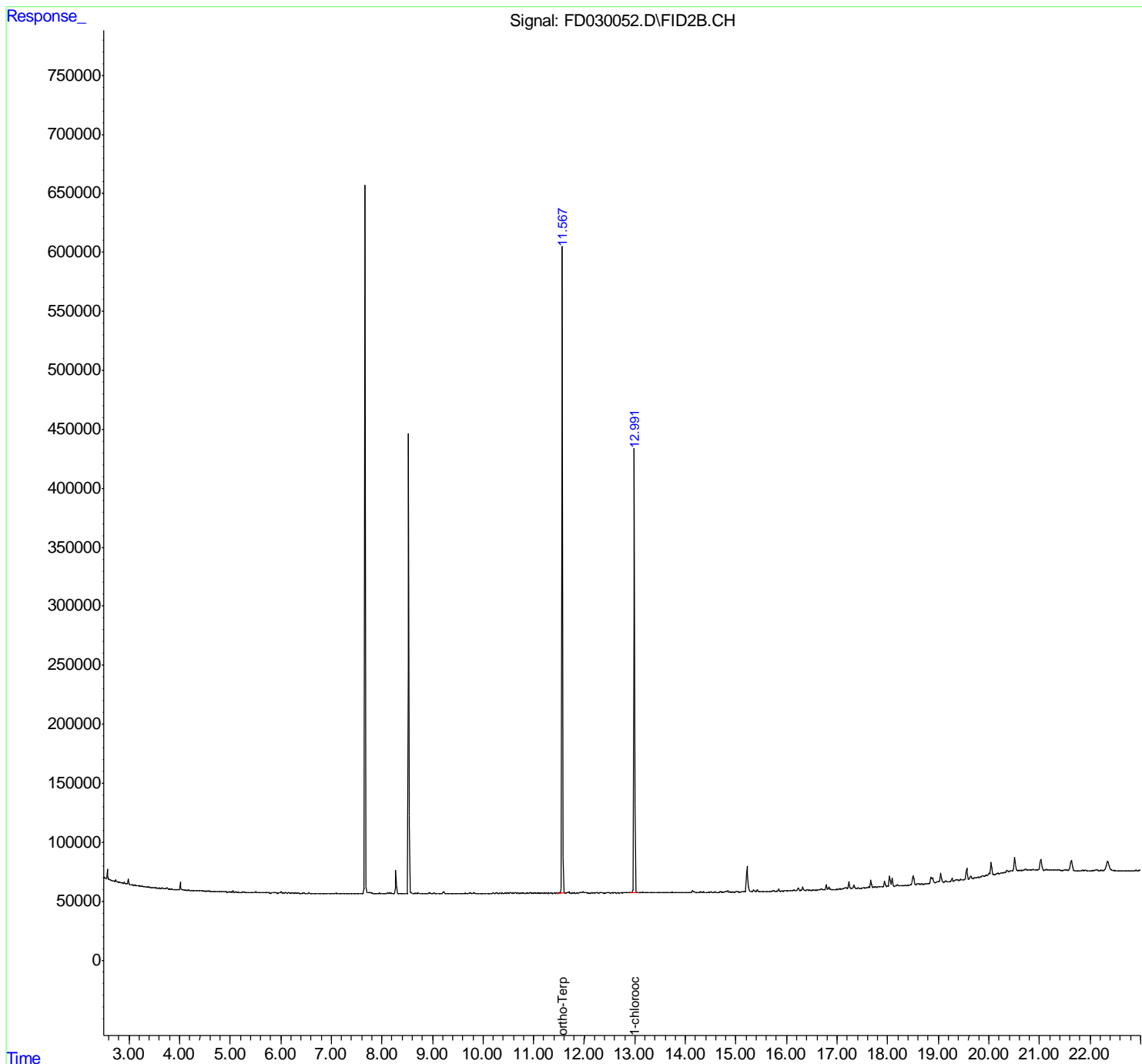
(f)=RT Delta > 1/2 Window

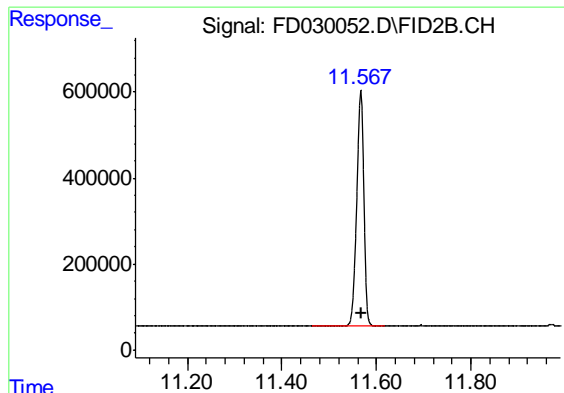
(m)=manual int.

Data Path : Z:\pestpcbsrv\HPCHEM1\FID_D\Data\FD081419AL\
 Data File : FD030052.D
 Signal(s) : FID2B.CH
 Acq On : 13 Aug 2019 15:37
 Operator : DD\AJ
 Sample : K4241-02
 Misc :
 ALS Vial : 54 Sample Multiplier: 1

Integration File: autoint1.e
 Quant Time: Aug 13 17:38:29 2019
 Quant Method : Z:\pestpcbsrv\HPCHEM1\FID_D\methods\Alaphatic EPH 080819.M
 Quant Title : GC Extractables
 QLast Update : Thu Aug 08 17:24:17 2019
 Response via : Initial Calibration
 Integrator: ChemStation 6890 Scale Mode: Large solvent peaks clipped

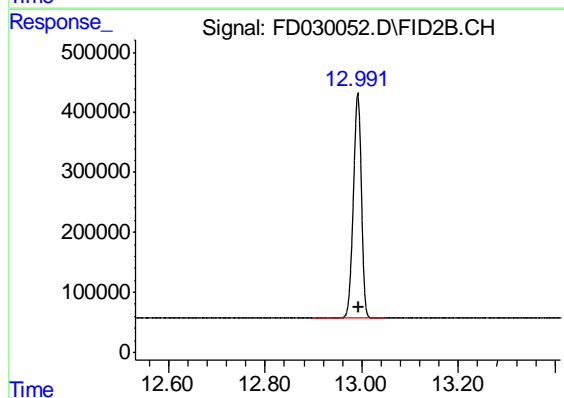
Volume Inj. : 1 ul
 Signal Phase : Rxi-1ms
 Signal Info : 20M x 0.18mm x 0.18um





#9 ortho-Terphenyl (SURR)

R.T.: 11.567 min
Delta R.T.: -0.002 min
Response: 5732002
Conc: 41.70 ug/ml



#12 1-chlorooctadecane (SURR)

R.T.: 12.992 min
Delta R.T.: -0.003 min
Response: 4282926
Conc: 37.55 ug/ml