

Data Path : Z:\pestpcbsrv\HPCHEM1\FID\_D\Data\FD081619AL\  
 Data File : FD030134.D  
 Signal(s) : FID2B.CH  
 Acq On : 16 Aug 2019 00:57  
 Operator : DD\AJ  
 Sample : PB122290BL  
 Misc :  
 ALS Vial : 73 Sample Multiplier: 1

Integration File: autoint1.e  
 Quant Time: Aug 16 08:07:45 2019  
 Quant Method : Z:\pestpcbsrv\HPCHEM1\FID\_D\methods\Alaphatic EPH 080819.M  
 Quant Title : GC Extractables  
 QLast Update : Thu Aug 08 17:24:17 2019  
 Response via : Initial Calibration  
 Integrator: ChemStation 6890 Scale Mode: Large solvent peaks clipped

Volume Inj. : 1 ul  
 Signal Phase : Rxi-1ms  
 Signal Info : 20M x 0.18mm x 0.18um

Compound	R.T.	Response	Conc Units
-----			
System Monitoring Compounds			
9) S ortho-Terphenyl (SURR)	11.563	5970035	43.433 ug/ml
Spiked Amount	50.000	Recovery	= 86.87%
12) S 1-chlorooctadecane (S...	12.988	4723586	41.415 ug/ml
Spiked Amount	50.000	Recovery	= 82.83%

Target Compounds

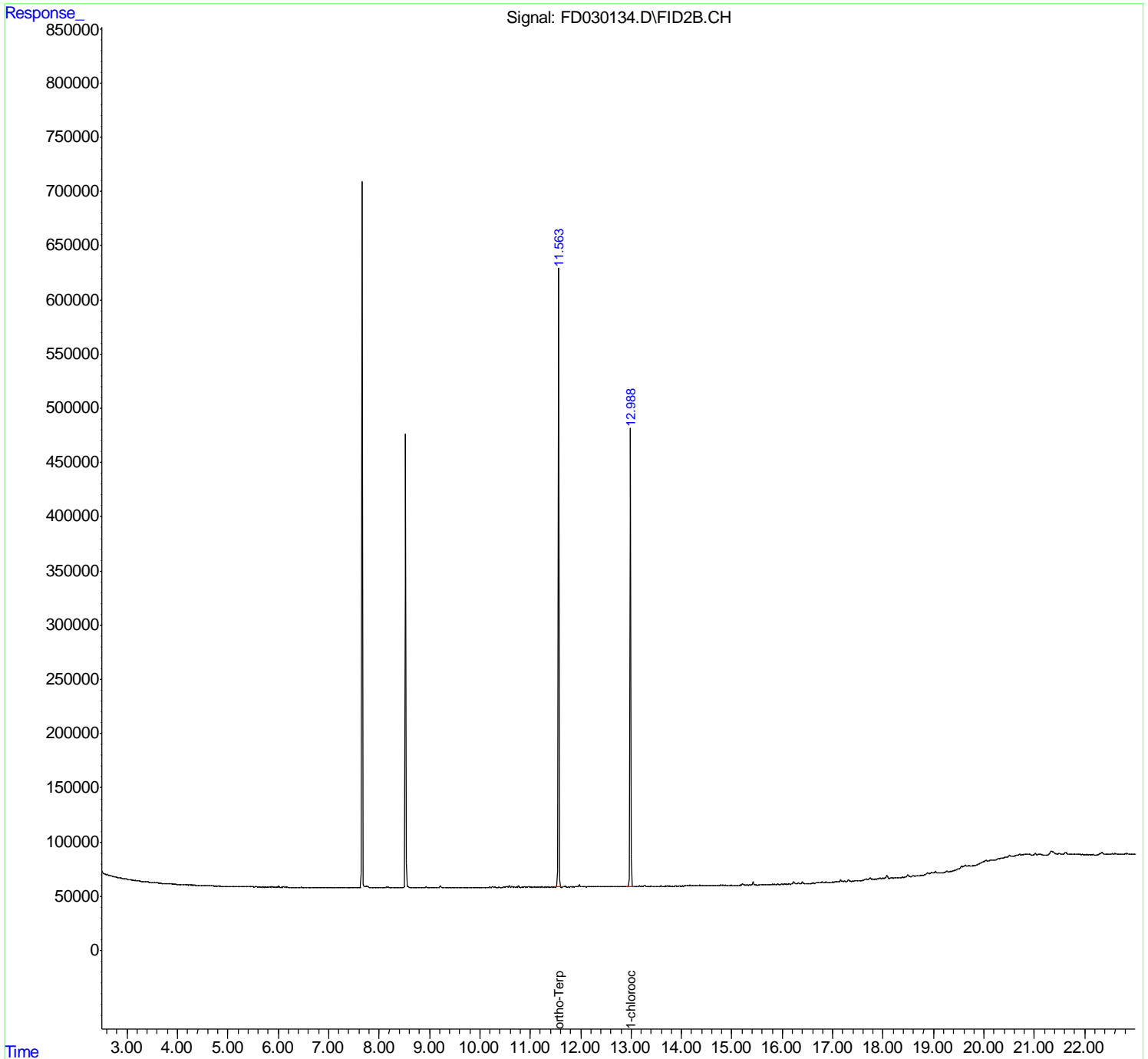
(f)=RT Delta > 1/2 Window

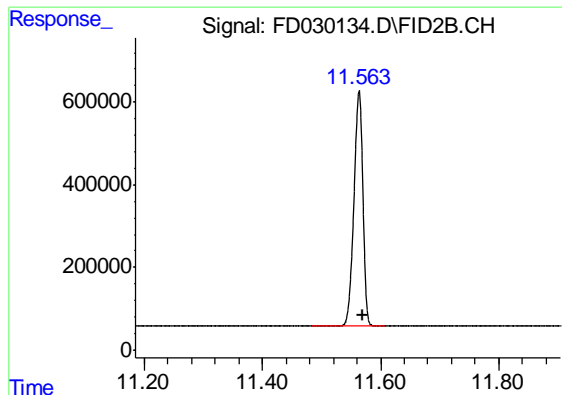
(m)=manual int.

Data Path : Z:\pestpcbsrv\HPCHEM1\FID\_D\Data\FD081619AL\  
 Data File : FD030134.D  
 Signal(s) : FID2B.CH  
 Acq On : 16 Aug 2019 00:57  
 Operator : DD\AJ  
 Sample : PB122290BL  
 Misc :  
 ALS Vial : 73 Sample Multiplier: 1

Integration File: autoint1.e  
 Quant Time: Aug 16 08:07:45 2019  
 Quant Method : Z:\pestpcbsrv\HPCHEM1\FID\_D\methods\Alaphatic EPH 080819.M  
 Quant Title : GC Extractables  
 QLast Update : Thu Aug 08 17:24:17 2019  
 Response via : Initial Calibration  
 Integrator: ChemStation 6890 Scale Mode: Large solvent peaks clipped

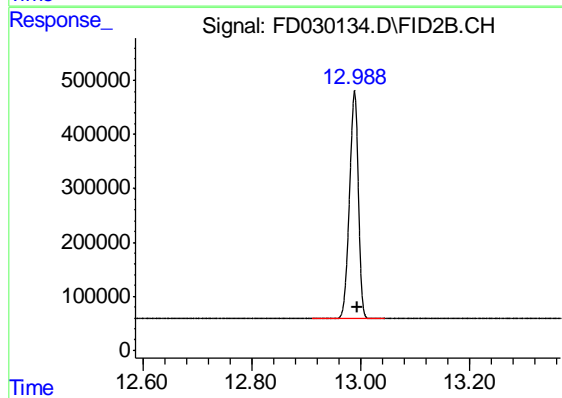
Volume Inj. : 1 ul  
 Signal Phase : Rxi-1ms  
 Signal Info : 20M x 0.18mm x 0.18um





#9 ortho-Terphenyl (SURR)

R.T.: 11.563 min  
Delta R.T.: -0.006 min  
Response: 5970035  
Conc: 43.43 ug/ml



#12 1-chlorooctadecane (SURR)

R.T.: 12.988 min  
Delta R.T.: -0.006 min  
Response: 4723586  
Conc: 41.42 ug/ml