

Data Path : Z:\pestpcbsrv\HPCHEM1\FID_D\Data\FD081821AL\
 Data File : FD038655.D
 Signal(s) : FID2B.CH
 Acq On : 19 Aug 2021 7:17
 Operator : AJ\MA
 Sample : M3449-12D
 Misc :
 ALS Vial : 74 Sample Multiplier: 1

Instrument :
 FID_D
 ClientSampleId :

Integration File: autoint1.e
 Quant Time: Aug 19 09:18:59 2021
 Quant Method : Z:\pestpcbsrv\HPCHEM1\FID_D\methods\Alaphatic EPH 080321.M
 Quant Title : GC Extractables
 QLast Update : Wed Aug 04 03:20:37 2021
 Response via : Initial Calibration
 Integrator: ChemStation 6890 Scale Mode: Large solvent peaks clipped

Volume Inj. : 1 ul
 Signal Phase : Rxi-1ms
 Signal Info : 20M x 0.18mm x 0.18um

Compound	R.T.	Response	Conc Units

System Monitoring Compounds			
9) S ortho-Terphenyl (SURR)	11.362	4240897	31.068 ug/ml
Spiked Amount	50.000	Recovery	= 62.14%
12) S 1-chlorooctadecane (S...	12.799	3326676	30.936 ug/ml
Spiked Amount	50.000	Recovery	= 61.87%
Target Compounds			
3) T A~Naphthalene (C11.7)	5.874f	269838	2.067 ug/ml

(f)=RT Delta > 1/2 Window

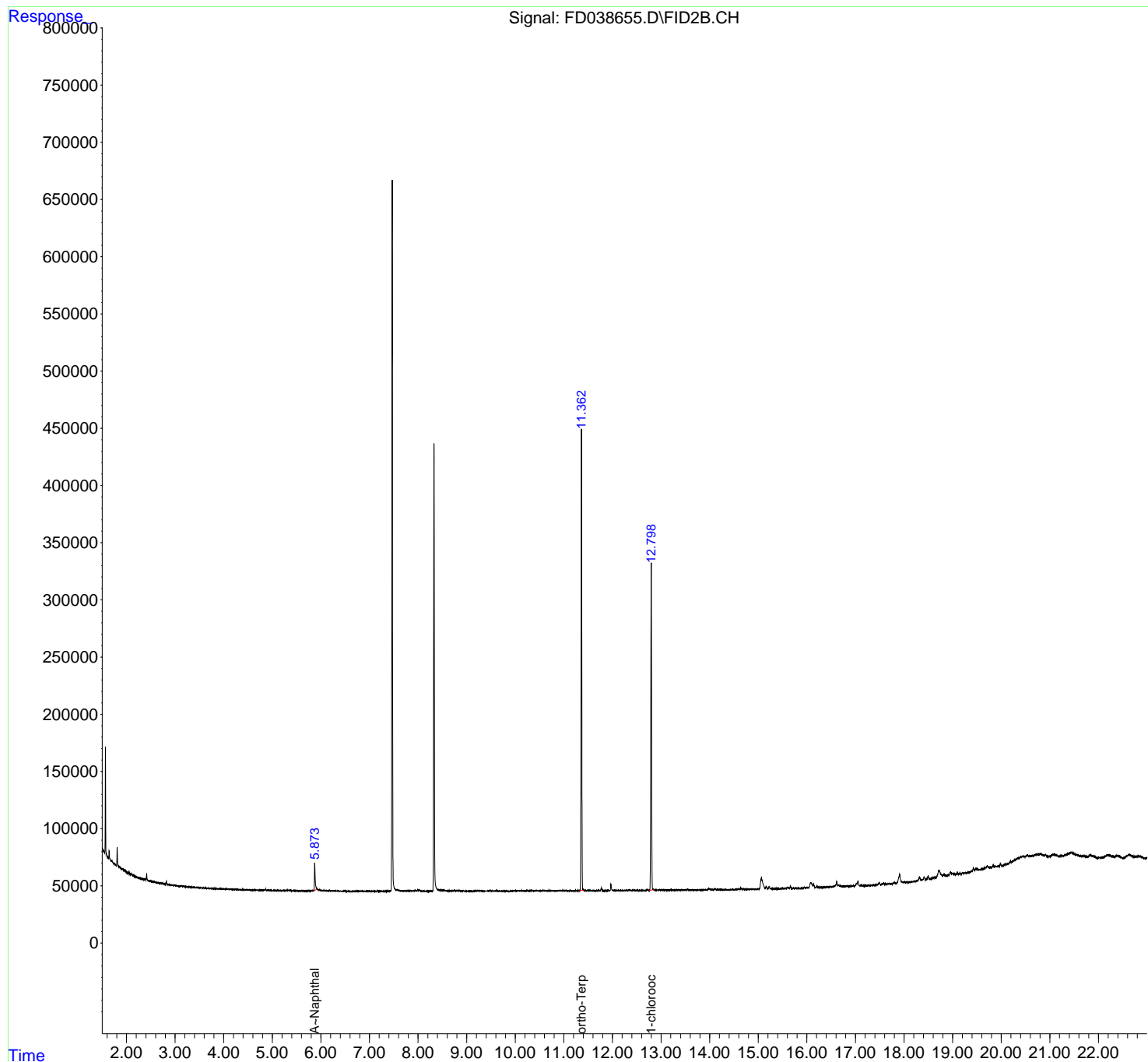
(m)=manual int.

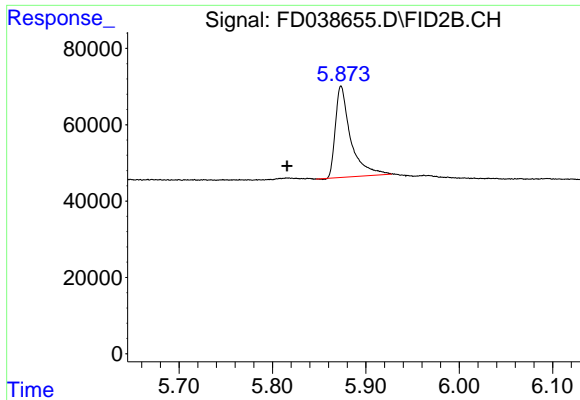
Data Path : Z:\pestpcbsrv\HPCHEM1\FID_D\Data\FD081821AL\
Data File : FD038655.D
Signal(s) : FID2B.CH
Acq On : 19 Aug 2021 7:17
Operator : AJ\MA
Sample : M3449-12D
Misc :
ALS Vial : 74 Sample Multiplier: 1

Instrument :
FID_D
ClientSampled :

Integration File: autoint1.e
Quant Time: Aug 19 09:18:59 2021
Quant Method : Z:\pestpcbsrv\HPCHEM1\FID_D\methods\Alaphatic EPH 080321.M
Quant Title : GC Extractables
QLast Update : Wed Aug 04 03:20:37 2021
Response via : Initial Calibration
Integrator: ChemStation 6890 Scale Mode: Large solvent peaks clipped

Volume Inj. : 1 ul
Signal Phase : Rxi-1ms
Signal Info : 20M x 0.18mm x 0.18um

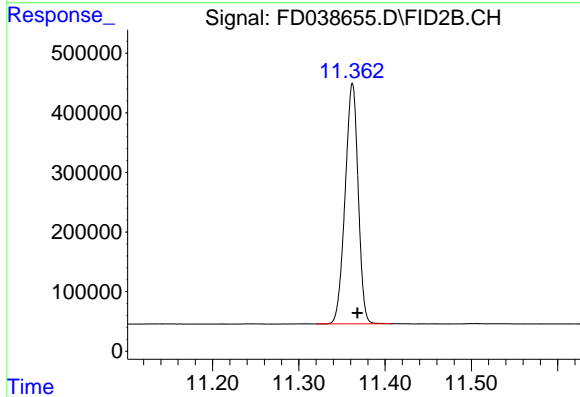




#3 A~Naphthalene (C11.7)

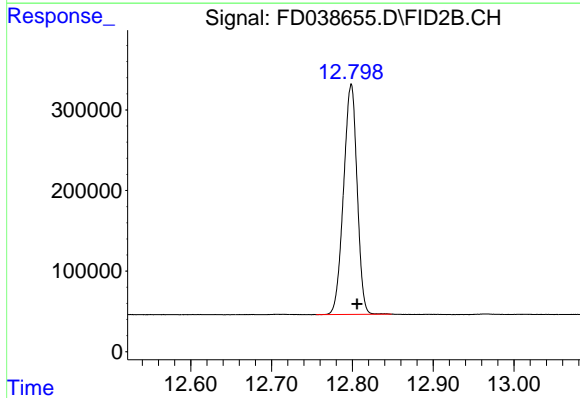
R.T.: 5.874 min
 Delta R.T.: 0.058 min
 Response: 269838
 Conc: 2.07 ug/ml

Instrument :
 FID_D
 ClientSampleId :



#9 ortho-Terphenyl (SURR)

R.T.: 11.362 min
 Delta R.T.: -0.006 min
 Response: 4240897
 Conc: 31.07 ug/ml



#12 1-chlorooctadecane (SURR)

R.T.: 12.799 min
 Delta R.T.: -0.007 min
 Response: 3326676
 Conc: 30.94 ug/ml