

Data Path : Z:\pestpcbsrv\HPCHEM1\FID_D\Data\FD081821AL\
 Data File : FD038652.D
 Signal(s) : FID2B.CH
 Acq On : 19 Aug 2021 5:20
 Operator : AJ\MA
 Sample : M3449-09
 Misc :
 ALS Vial : 71 Sample Multiplier: 1

Instrument :
 FID_D
 ClientSampleId :
 TP3-EPH-2

Integration File: sample.E
 Quant Time: Aug 19 06:07:05 2021
 Quant Method : Z:\pestpcbsrv\HPCHEM1\FID_D\methods\Alaphatic EPH 080321.M
 Quant Title : GC Extractables
 QLast Update : Wed Aug 04 03:20:37 2021
 Response via : Initial Calibration
 Integrator: ChemStation 6890 Scale Mode: Large solvent peaks clipped

Volume Inj. : 1 ul
 Signal Phase : Rxi-1ms
 Signal Info : 20M x 0.18mm x 0.18um

Compound	R.T.	Response	Conc Units

System Monitoring Compounds			
9) S ortho-Terphenyl (SURR)	11.364	4704550	34.465 ug/ml
Spiked Amount	50.000	Recovery	= 68.93%
12) S 1-chlorooctadecane (S...	12.800	3672018	34.147 ug/ml
Spiked Amount	50.000	Recovery	= 68.29%

Target Compounds

(f)=RT Delta > 1/2 Window

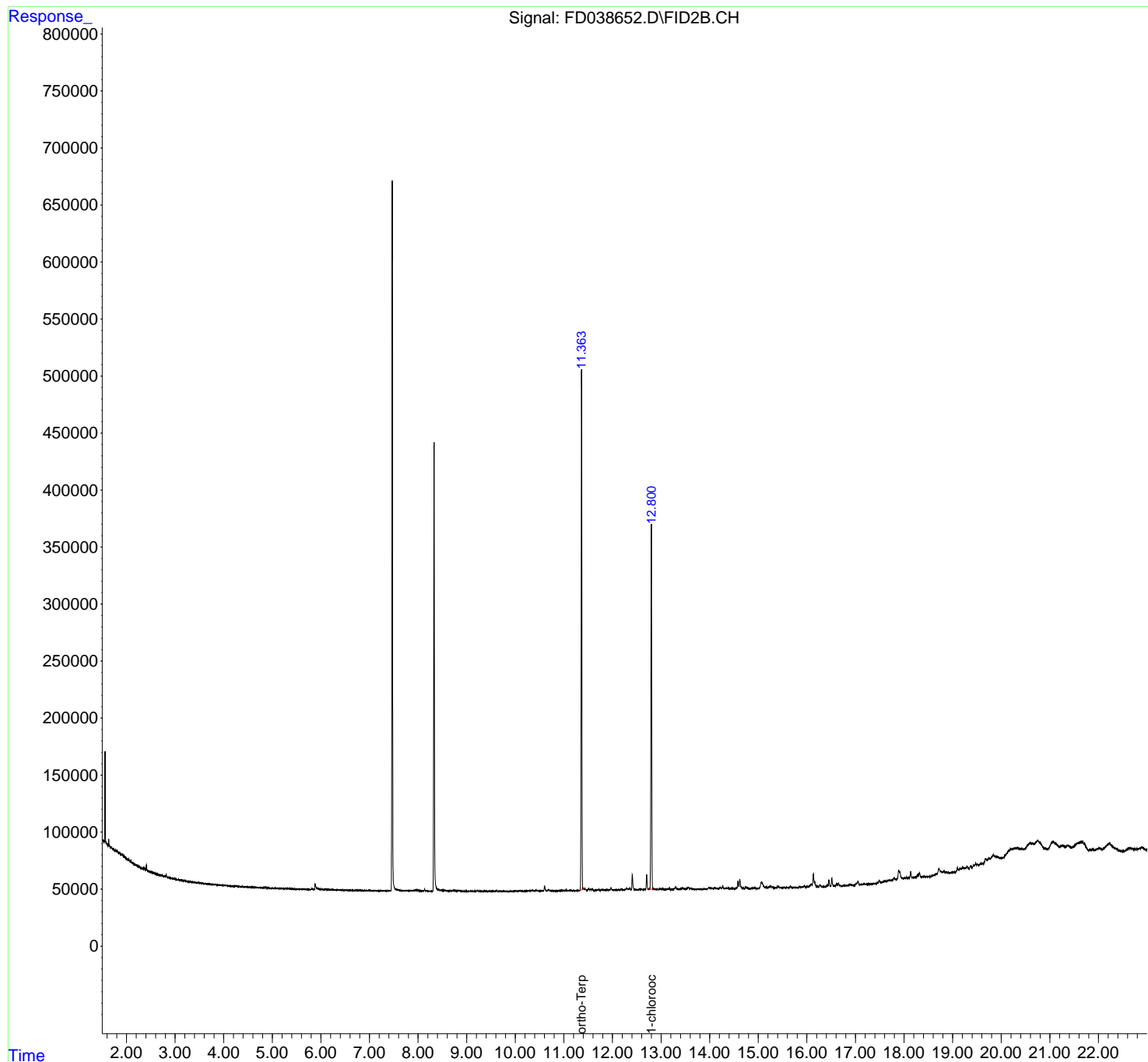
(m)=manual int.

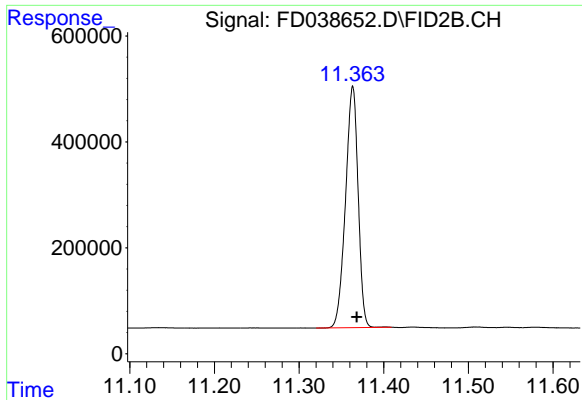
Data Path : Z:\pestpcbsrv\HPCHEM1\FID_D\Data\FD081821AL\
 Data File : FD038652.D
 Signal(s) : FID2B.CH
 Acq On : 19 Aug 2021 5:20
 Operator : AJ\MA
 Sample : M3449-09
 Misc :
 ALS Vial : 71 Sample Multiplier: 1

Instrument :
 FID_D
 ClientSampled :
 TP3-EPH-2

Integration File: sample.E
 Quant Time: Aug 19 06:07:05 2021
 Quant Method : Z:\pestpcbsrv\HPCHEM1\FID_D\methods\Alaphatic EPH 080321.M
 Quant Title : GC Extractables
 QLast Update : Wed Aug 04 03:20:37 2021
 Response via : Initial Calibration
 Integrator: ChemStation 6890 Scale Mode: Large solvent peaks clipped

Volume Inj. : 1 ul
 Signal Phase : Rxi-1ms
 Signal Info : 20M x 0.18mm x 0.18um

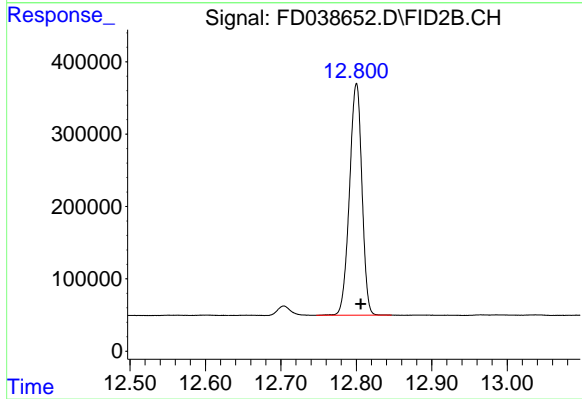




#9 ortho-Terphenyl (SURR)

R.T.: 11.364 min
Delta R.T.: -0.004 min
Response: 4704550
Conc: 34.46 ug/ml

Instrument :
FID_D
ClientSampleId :
TP3-EPH-2



#12 1-chlorooctadecane (SURR)

R.T.: 12.800 min
Delta R.T.: -0.005 min
Response: 3672018
Conc: 34.15 ug/ml