

Data Path : Z:\pestpcbsrv\HPCHEM1\FID\_D\Data\FD081821AL\  
 Data File : FD038655.D  
 Signal(s) : FID2B.CH  
 Acq On : 19 Aug 2021 7:17  
 Operator : AJ\MA  
 Sample : M3449-12D  
 Misc :  
 ALS Vial : 74 Sample Multiplier: 1

Instrument :  
 FID\_D  
 ClientSampleId :  
 TP4-EPH-2

Integration File: sample.E  
 Quant Time: Aug 19 09:18:59 2021  
 Quant Method : Z:\pestpcbsrv\HPCHEM1\FID\_D\methods\Alaphatic EPH 080321.M  
 Quant Title : GC Extractables  
 QLast Update : Wed Aug 04 03:20:37 2021  
 Response via : Initial Calibration  
 Integrator: ChemStation 6890 Scale Mode: Large solvent peaks clipped

Volume Inj. : 1 ul  
 Signal Phase : Rxi-1ms  
 Signal Info : 20M x 0.18mm x 0.18um

Compound	R.T.	Response	Conc Units
-----			
System Monitoring Compounds			
9) S ortho-Terphenyl (SURR)	11.362	4240897	31.068 ug/ml
Spiked Amount	50.000	Recovery	= 62.14%
12) S 1-chlorooctadecane (S...	12.799	3326676	30.936 ug/ml
Spiked Amount	50.000	Recovery	= 61.87%

Target Compounds

-----

(f)=RT Delta > 1/2 Window

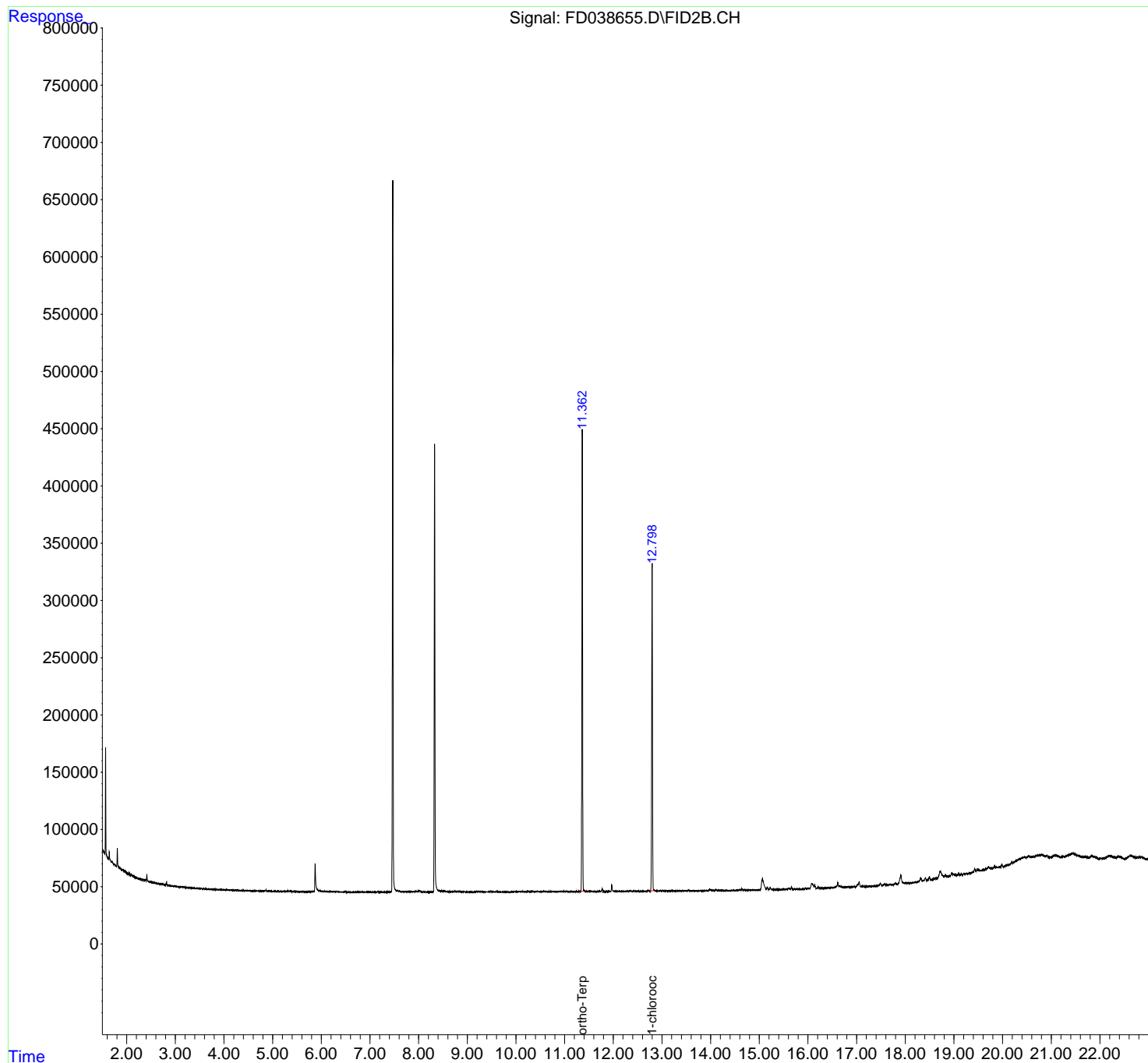
(m)=manual int.

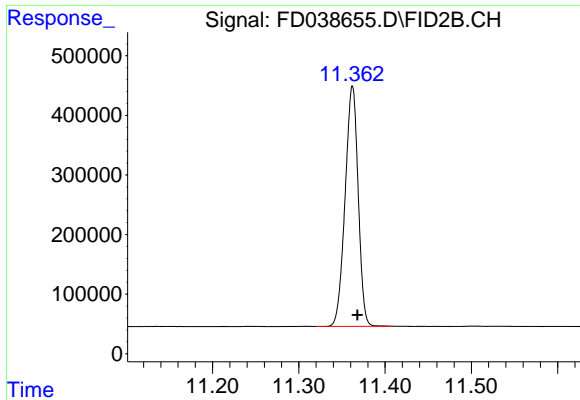
Data Path : Z:\pestpcbsrv\HPCHEM1\FID\_D\Data\FD081821AL\  
Data File : FD038655.D  
Signal(s) : FID2B.CH  
Acq On : 19 Aug 2021 7:17  
Operator : AJ\MA  
Sample : M3449-12D  
Misc :  
ALS Vial : 74 Sample Multiplier: 1

Instrument :  
FID\_D  
ClientSampled :  
TP4-EPH-2

Integration File: sample.E  
Quant Time: Aug 19 09:18:59 2021  
Quant Method : Z:\pestpcbsrv\HPCHEM1\FID\_D\methods\Alaphatic EPH 080321.M  
Quant Title : GC Extractables  
QLast Update : Wed Aug 04 03:20:37 2021  
Response via : Initial Calibration  
Integrator: ChemStation 6890 Scale Mode: Large solvent peaks clipped

Volume Inj. : 1 ul  
Signal Phase : Rxi-1ms  
Signal Info : 20M x 0.18mm x 0.18um

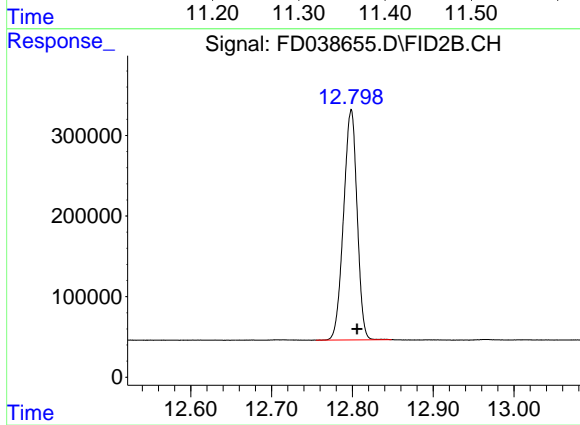




#9 ortho-Terphenyl (SURR)

R.T.: 11.362 min  
Delta R.T.: -0.006 min  
Response: 4240897  
Conc: 31.07 ug/ml

Instrument :  
FID\_D  
ClientSampled :  
TP4-EPH-2



#12 1-chlorooctadecane (SURR)

R.T.: 12.799 min  
Delta R.T.: -0.007 min  
Response: 3326676  
Conc: 30.94 ug/ml