

Data Path : Z:\pestpcbsrv\HPCHEM1\FID_D\Data\FD081921AL\
 Data File : FD038664.D
 Signal(s) : FID2B.CH
 Acq On : 19 Aug 2021 16:52
 Operator : AJ\MA
 Sample : PB138561BL
 Misc :
 ALS Vial : 53 Sample Multiplier: 1

Integration File: autoint1.e
 Quant Time: Aug 20 01:52:21 2021
 Quant Method : Z:\pestpcbsrv\HPCHEM1\FID_D\methods\Alaphatic EPH 080321.M
 Quant Title : GC Extractables
 QLast Update : Wed Aug 04 03:20:37 2021
 Response via : Initial Calibration
 Integrator: ChemStation 6890 Scale Mode: Large solvent peaks clipped

Volume Inj. : 1 ul
 Signal Phase : Rxi-1ms
 Signal Info : 20M x 0.18mm x 0.18um

Compound	R.T.	Response	Conc Units

System Monitoring Compounds			
9) S ortho-Terphenyl (SURR)	11.362	5442082	39.868 ug/ml
Spiked Amount	50.000	Recovery	= 79.74%
12) S 1-chlorooctadecane (S...	12.798	4296950	39.959 ug/ml
Spiked Amount	50.000	Recovery	= 79.92%

Target Compounds

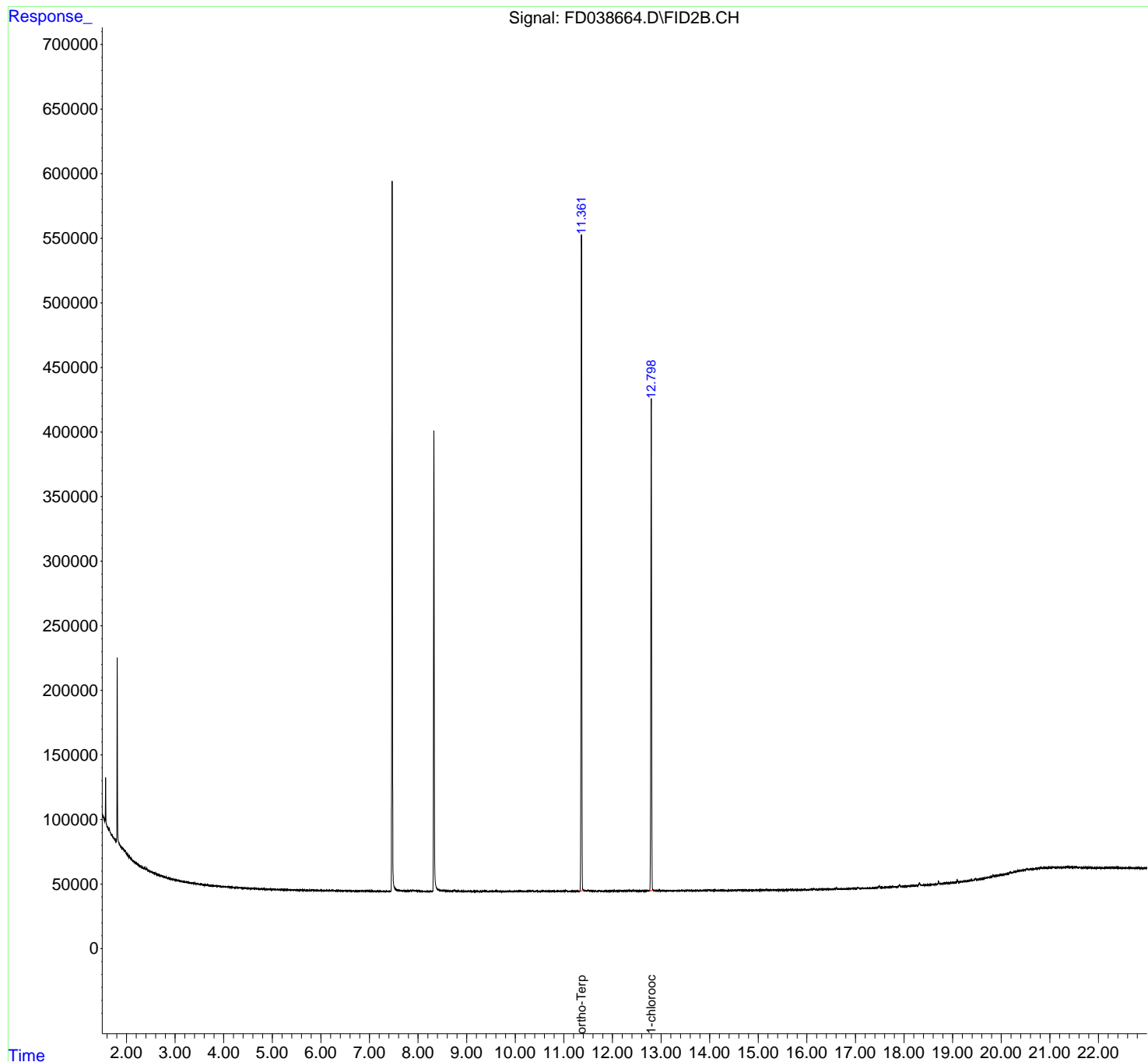
(f)=RT Delta > 1/2 Window

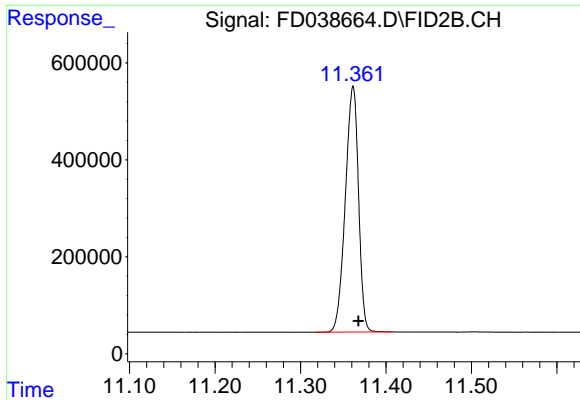
(m)=manual int.

Data Path : Z:\pestpcbsrv\HPCHEM1\FID_D\Data\FD081921AL\
Data File : FD038664.D
Signal(s) : FID2B.CH
Acq On : 19 Aug 2021 16:52
Operator : AJ\MA
Sample : PB138561BL
Misc :
ALS Vial : 53 Sample Multiplier: 1

Integration File: autoint1.e
Quant Time: Aug 20 01:52:21 2021
Quant Method : Z:\pestpcbsrv\HPCHEM1\FID_D\methods\Alaphatic EPH 080321.M
Quant Title : GC Extractables
QLast Update : Wed Aug 04 03:20:37 2021
Response via : Initial Calibration
Integrator: ChemStation 6890 Scale Mode: Large solvent peaks clipped

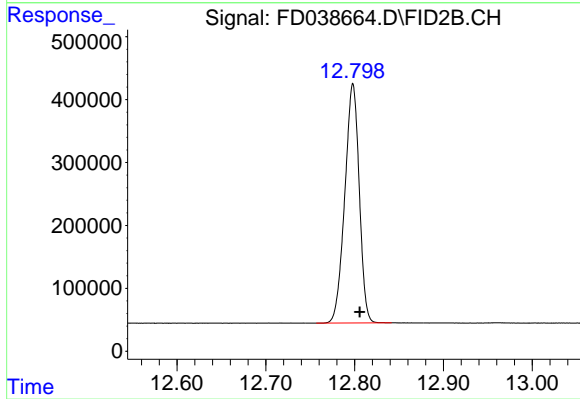
Volume Inj. : 1 ul
Signal Phase : Rxi-1ms
Signal Info : 20M x 0.18mm x 0.18um





#9 ortho-Terphenyl (SURR)

R.T.: 11.362 min
Delta R.T.: -0.006 min
Response: 5442082
Conc: 39.87 ug/ml



#12 1-chlorooctadecane (SURR)

R.T.: 12.798 min
Delta R.T.: -0.008 min
Response: 4296950
Conc: 39.96 ug/ml