

Data Path : Z:\pestpcbsrv\HPCHEM1\FID_D\Data\FD081922AL\
 Data File : FD043674.D
 Signal(s) : FID2B.ch
 Acq On : 19 Aug 2022 06:50
 Operator : YP/AJ
 Sample : I.BLK
 Misc :
 ALS Vial : 51 Sample Multiplier: 1

Instrument :
 FID_D
 ClientSampleId :

Integration File: autoint1.e
 Quant Time: Aug 19 15:29:02 2022
 Quant Method : Z:\pestpcbsrv\HPCHEM1\FID_D\methods\Aliphatic EPH 072522.M
 Quant Title : GC Extractables
 QLast Update : Tue Jul 26 05:37:25 2022
 Response via : Initial Calibration
 Integrator: ChemStation

Volume Inj. : 1 ul
 Signal Phase : Rxi-1ms
 Signal Info : 20M x 0.18mm x 0.18um

Compound	R.T.	Response	Conc Units

System Monitoring Compounds			
Target Compounds			
19) T n-Tetratriacontane (C34)	19.271	83603	0.650 ug/ml
21) T n-Octatriacontane (C38)	20.725	1086814	9.191 ug/ml

(f)=RT Delta > 1/2 Window

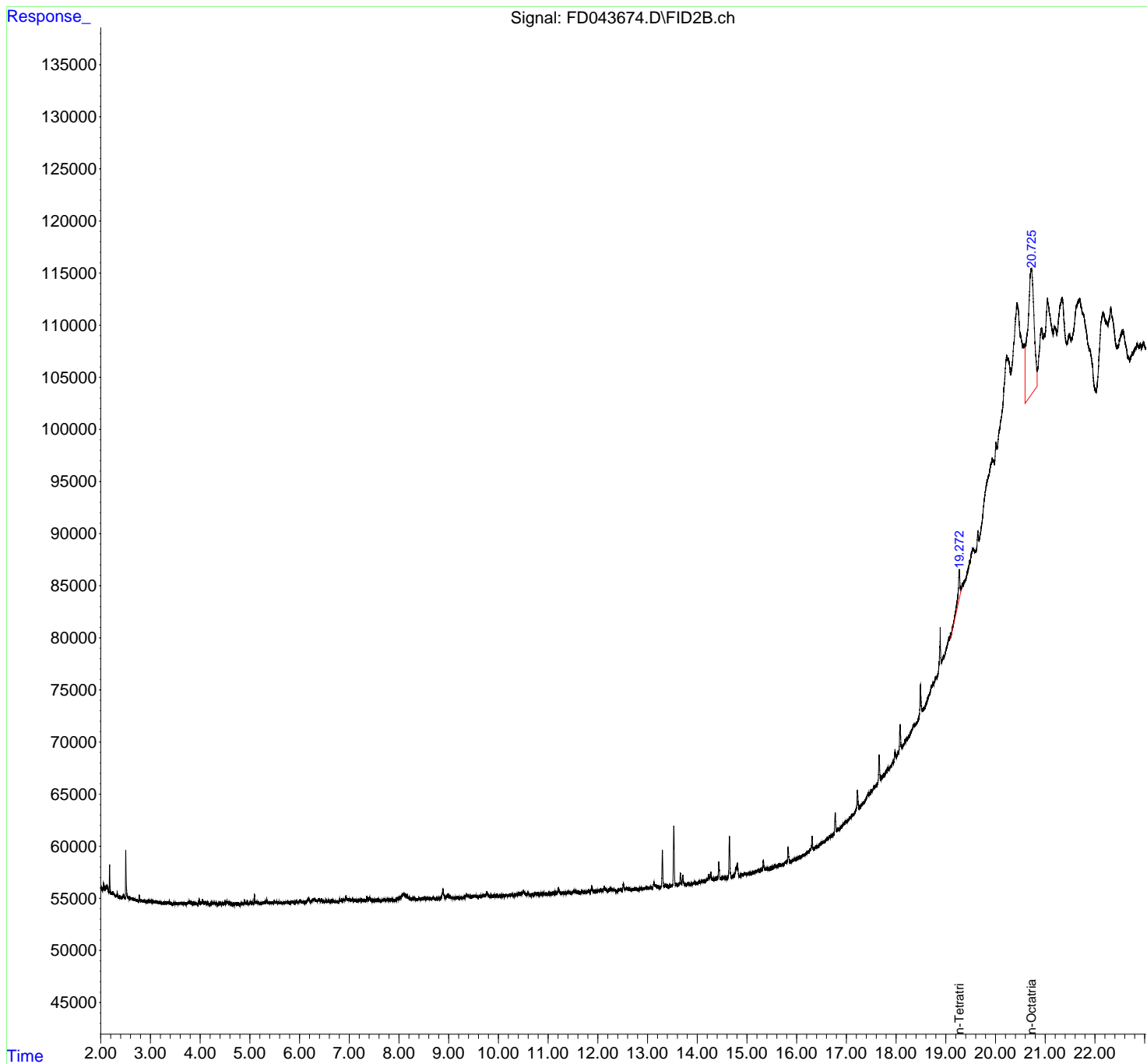
(m)=manual int.

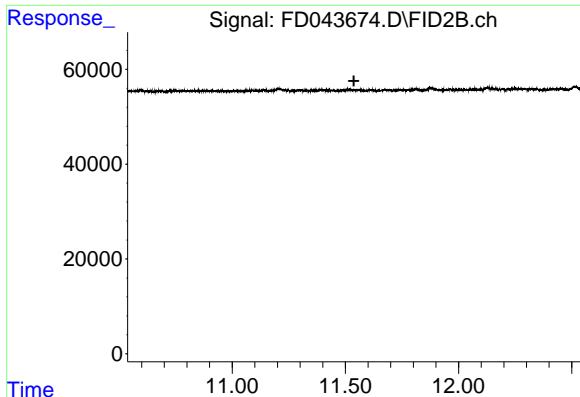
Data Path : Z:\pestpcbsrv\HPCHEM1\FID_D\Data\FD081922AL\
 Data File : FD043674.D
 Signal(s) : FID2B.ch
 Acq On : 19 Aug 2022 06:50
 Operator : YP/AJ
 Sample : I.BLK
 Misc :
 ALS Vial : 51 Sample Multiplier: 1

Instrument :
 FID_D
 ClientSampleId :

Integration File: autoint1.e
 Quant Time: Aug 19 15:29:02 2022
 Quant Method : Z:\pestpcbsrv\HPCHEM1\FID_D\methods\Aliphatic EPH 072522.M
 Quant Title : GC Extractables
 QLast Update : Tue Jul 26 05:37:25 2022
 Response via : Initial Calibration
 Integrator: ChemStation

Volume Inj. : 1 ul
 Signal Phase : Rxi-1ms
 Signal Info : 20M x 0.18mm x 0.18um

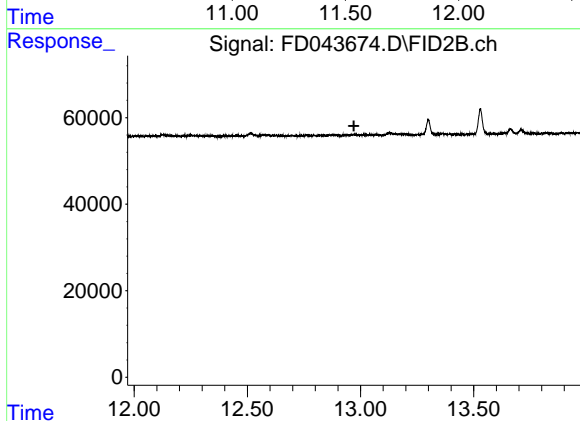




#9 ortho-Terphenyl (SURR)

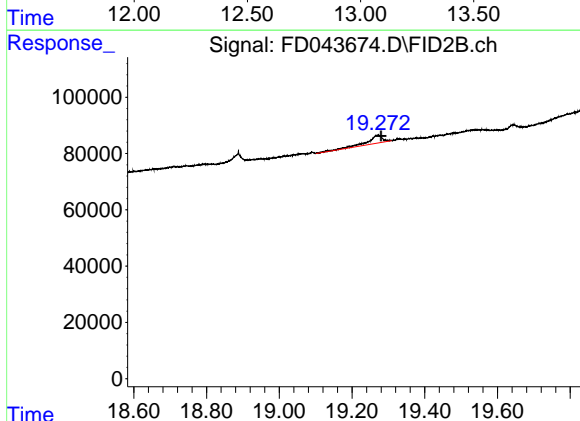
R.T.: 0.000 min
 Exp R.T. : 11.538 min
 Response: 0
 Conc: N.D.

Instrument :
 FID_D
 ClientSampleId :



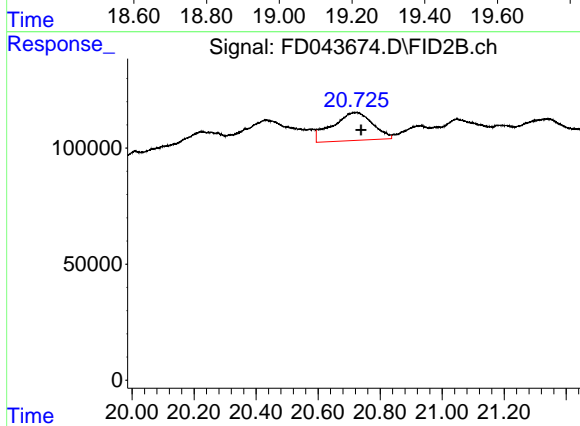
#12 1-chlorooctadecane (SURR)

R.T.: 0.000 min
 Exp R.T. : 12.971 min
 Response: 0
 Conc: N.D.



#19 n-Tetratriacontane (C34)

R.T.: 19.271 min
 Delta R.T.: -0.009 min
 Response: 83603
 Conc: 0.65 ug/ml



#21 n-Octatriacontane (C38)

R.T.: 20.725 min
 Delta R.T.: -0.013 min
 Response: 1086814
 Conc: 9.19 ug/ml