

Data Path : Z:\pestpcbsrv\HPCHEM1\FID_D\Data\FD082621AL\
 Data File : FD038695.D
 Signal(s) : FID2B.CH
 Acq On : 26 Aug 2021 16:05
 Operator : AJ\MA
 Sample : PB138735BL
 Misc :
 ALS Vial : 53 Sample Multiplier: 1

Instrument :
 FID_D
 ClientSampleId :

Integration File: autoint1.e
 Quant Time: Aug 27 01:36:53 2021
 Quant Method : Z:\pestpcbsrv\HPCHEM1\FID_D\methods\Alaphatic EPH 080321.M
 Quant Title : GC Extractables
 QLast Update : Wed Aug 04 03:20:37 2021
 Response via : Initial Calibration
 Integrator: ChemStation 6890 Scale Mode: Large solvent peaks clipped

Volume Inj. : 1 ul
 Signal Phase : Rxi-1ms
 Signal Info : 20M x 0.18mm x 0.18um

Compound	R.T.	Response	Conc Units

System Monitoring Compounds			
9) S ortho-Terphenyl (SURR)	11.355	6348664	46.509 ug/ml
Spiked Amount	50.000	Recovery	= 93.02%
12) S 1-chlorooctadecane (S...	12.792	4875887	45.343 ug/ml
Spiked Amount	50.000	Recovery	= 90.69%

Target Compounds

(f)=RT Delta > 1/2 Window

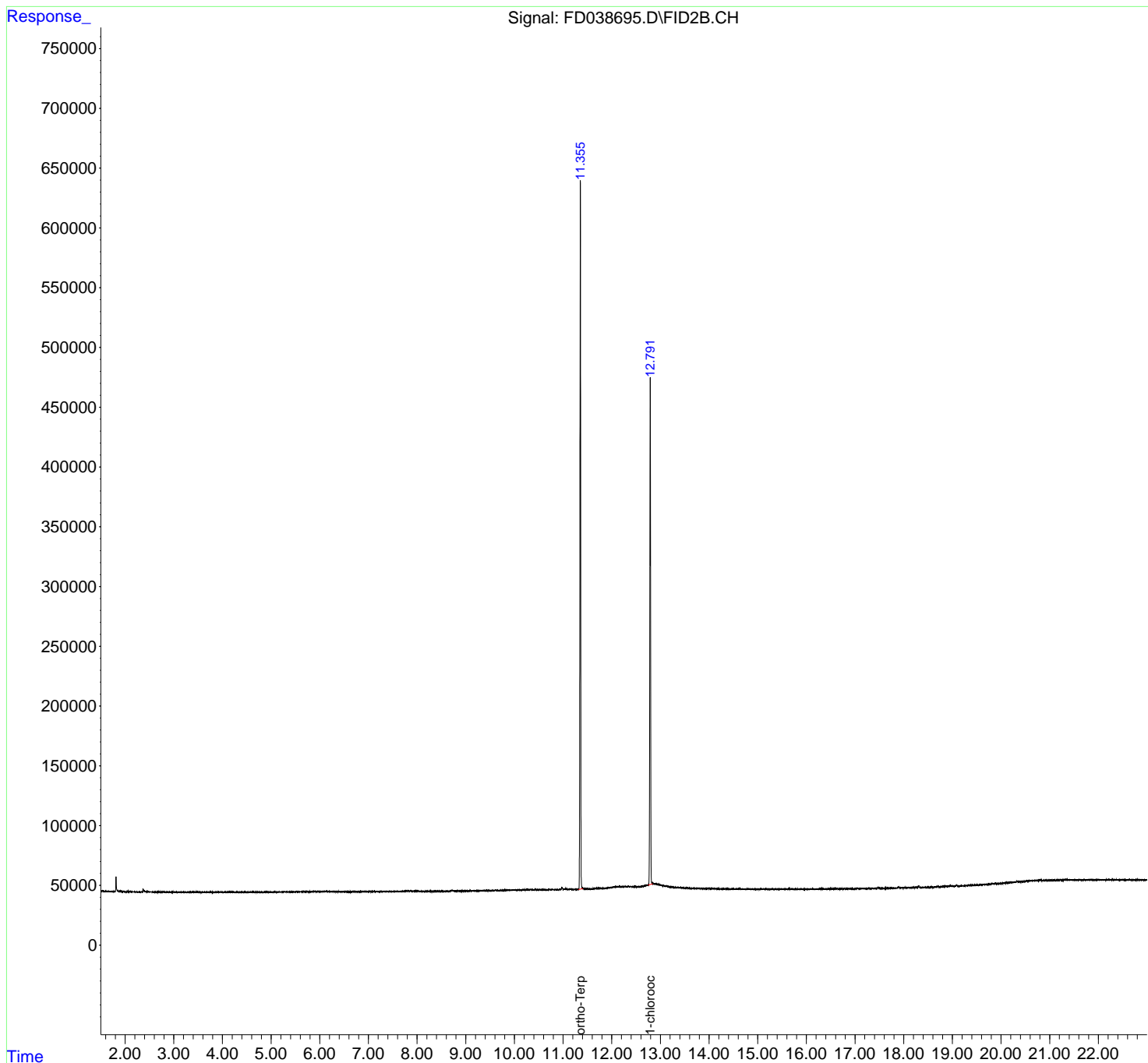
(m)=manual int.

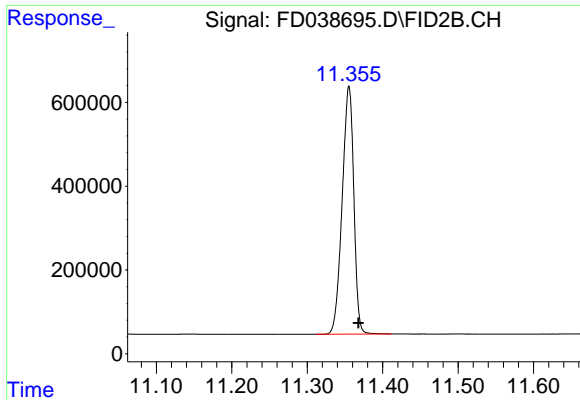
Data Path : Z:\pestpcbsrv\HPCHEM1\FID_D\Data\FD082621AL\
Data File : FD038695.D
Signal(s) : FID2B.CH
Acq On : 26 Aug 2021 16:05
Operator : AJ\MA
Sample : PB138735BL
Misc :
ALS Vial : 53 Sample Multiplier: 1

Instrument :
FID_D
ClientSampleId :

Integration File: autoint1.e
Quant Time: Aug 27 01:36:53 2021
Quant Method : Z:\pestpcbsrv\HPCHEM1\FID_D\methods\Alaphatic EPH 080321.M
Quant Title : GC Extractables
QLast Update : Wed Aug 04 03:20:37 2021
Response via : Initial Calibration
Integrator: ChemStation 6890 Scale Mode: Large solvent peaks clipped

Volume Inj. : 1 ul
Signal Phase : Rxi-1ms
Signal Info : 20M x 0.18mm x 0.18um

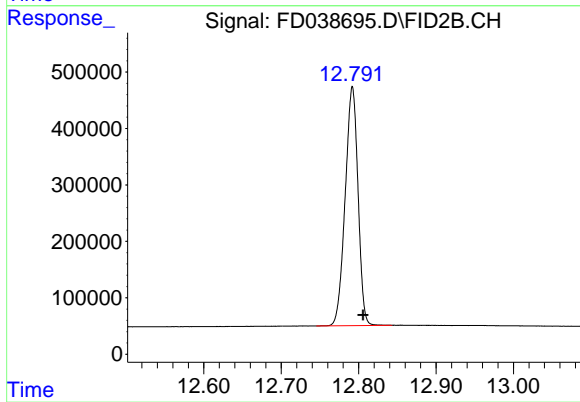




#9 ortho-Terphenyl (SURR)

R.T.: 11.355 min
Delta R.T.: -0.013 min
Response: 6348664
Conc: 46.51 ug/ml

Instrument :
FID_D
ClientSampleId :



#12 1-chlorooctadecane (SURR)

R.T.: 12.792 min
Delta R.T.: -0.014 min
Response: 4875887
Conc: 45.34 ug/ml