

Data Path : Z:\pestpcbsrv\HPCHEM1\FID_D\Data\FD082819AL\
 Data File : FD030362.D
 Signal(s) : FID2B.CH
 Acq On : 28 Aug 2019 23:34
 Operator : DD\AJ
 Sample : K4546-12
 Misc :
 ALS Vial : 64 Sample Multiplier: 1

Instrument :
 FID_D
 ClientSampleId :

Integration File: sample.E
 Quant Time: Aug 29 00:11:52 2019
 Quant Method : Z:\pestpcbsrv\HPCHEM1\FID_D\methods\Alaphatic EPH 080819.M
 Quant Title : GC Extractables
 QLast Update : Thu Aug 08 17:24:17 2019
 Response via : Initial Calibration
 Integrator: ChemStation 6890 Scale Mode: Large solvent peaks clipped

Volume Inj. : 1 ul
 Signal Phase : Rxi-1ms
 Signal Info : 20M x 0.18mm x 0.18um

Compound	R.T.	Response	Conc Units
System Monitoring Compounds			
9) S ortho-Terphenyl (SURR)	11.537	5066778	36.861 ug/ml
Spiked Amount	50.000	Recovery =	73.72%
12) S 1-chlorooctadecane (S...	12.963	3783196	33.170 ug/ml
Spiked Amount	50.000	Recovery =	66.34%

Target Compounds

(f)=RT Delta > 1/2 Window

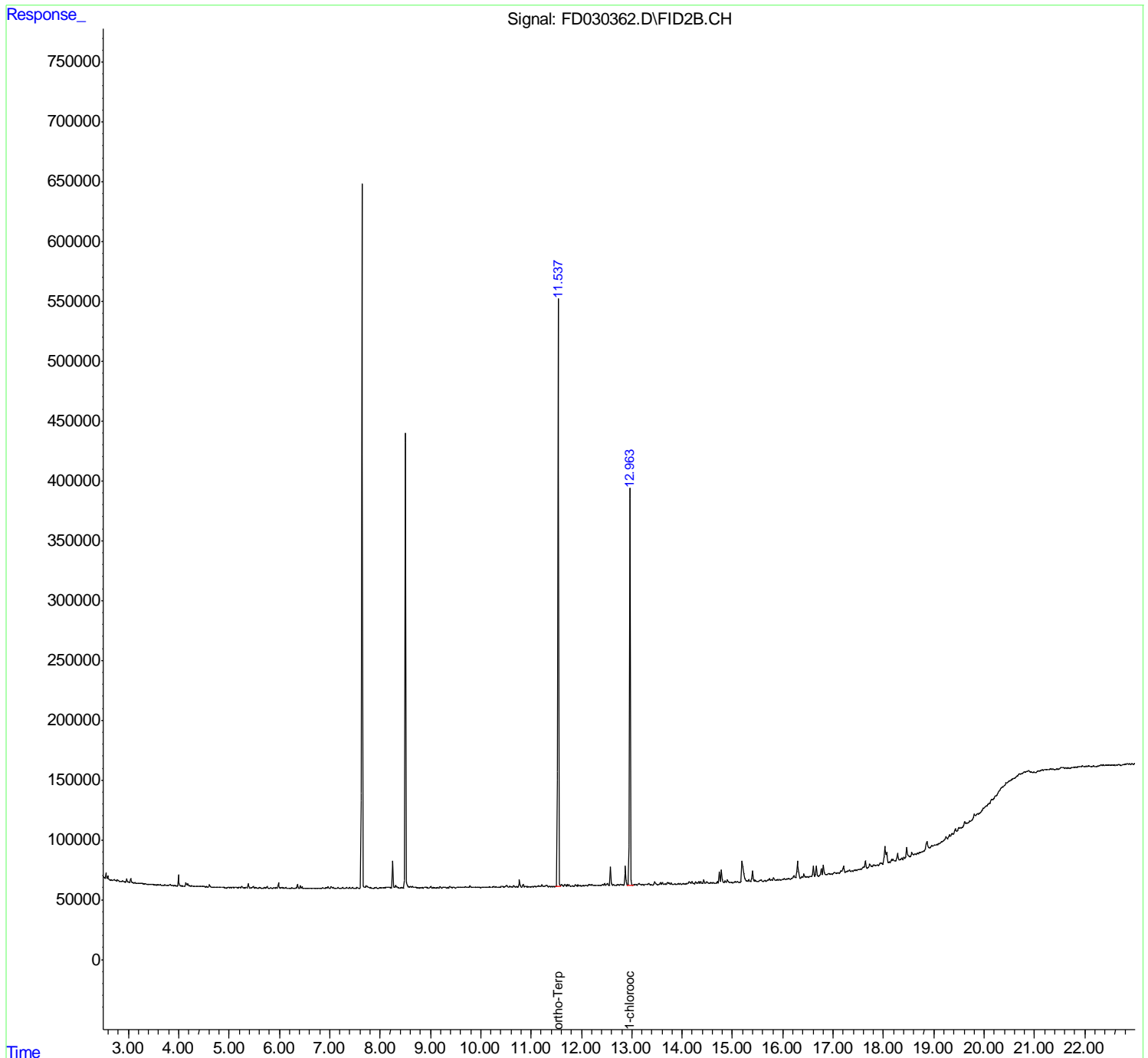
(m)=manual int.

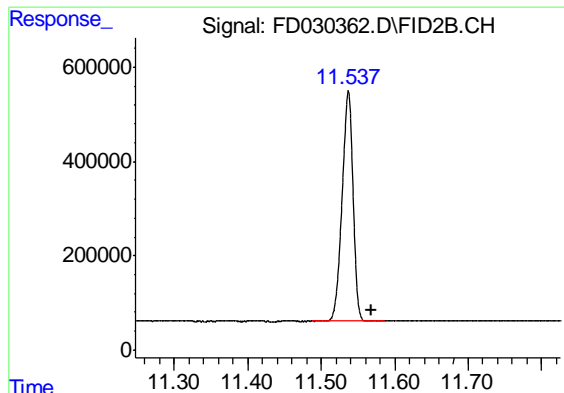
Data Path : Z:\pestpcbsrv\HPCHEM1\FID_D\Data\FD082819AL\
 Data File : FD030362.D
 Signal(s) : FID2B.CH
 Acq On : 28 Aug 2019 23:34
 Operator : DD\AJ
 Sample : K4546-12
 Misc :
 ALS Vial : 64 Sample Multiplier: 1

Instrument :
 FID_D
 ClientSampled :

Integration File: sample.E
 Quant Time: Aug 29 00:11:52 2019
 Quant Method : Z:\pestpcbsrv\HPCHEM1\FID_D\methods\Alaphatic EPH 080819.M
 Quant Title : GC Extractables
 QLast Update : Thu Aug 08 17:24:17 2019
 Response via : Initial Calibration
 Integrator: ChemStation 6890 Scale Mode: Large solvent peaks clipped

Volume Inj. : 1 ul
 Signal Phase : Rxi-1ms
 Signal Info : 20M x 0.18mm x 0.18um

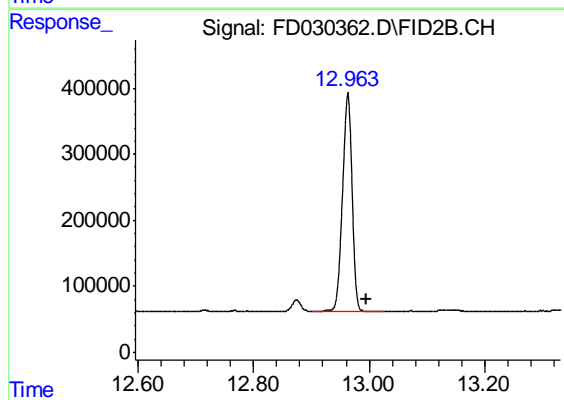




#9 ortho-Terphenyl (SURR)

R.T.: 11.537 min
Delta R.T.: -0.032 min
Response: 5066778
Conc: 36.86 ug/ml

Instrument :
FID_D
ClientSampleId :



#12 1-chlorooctadecane (SURR)

R.T.: 12.963 min
Delta R.T.: -0.031 min
Response: 3783196
Conc: 33.17 ug/ml