

Data Path : Z:\pestpcbsrv\HPCHEM1\FID_D\Data\FD083018AL\
 Data File : FD025520.D
 Signal(s) : FID2B.CH
 Acq On : 30 Aug 2018 17:10
 Operator : AJ\SJ
 Sample : J4707-01D
 Misc :
 ALS Vial : 59 Sample Multiplier: 1

Integration File: autoint1.e
 Quant Time: Aug 31 05:38:45 2018
 Quant Method : Z:\pestpcbsrv\HPCHEM1\FID_D\methods\Alaphatic EPH 080218.M
 Quant Title : GC Extractables
 QLast Update : Thu Aug 02 16:12:55 2018
 Response via : Initial Calibration
 Integrator: ChemStation 6890 Scale Mode: Large solvent peaks clipped

Volume Inj. : 1 ul
 Signal Phase : Rxi-1ms
 Signal Info : 20M x 0.18mm x 0.18um

Compound	R.T.	Response	Conc Units

System Monitoring Compounds			
9) S ortho-Terphenyl (SURR)	11.335	2389000	28.439 ug/ml
Spiked Amount	50.000	Recovery	= 56.88%
12) S 1-chlorooctadecane (S...	12.776	1988158	28.839 ug/ml
Spiked Amount	50.000	Recovery	= 57.68%

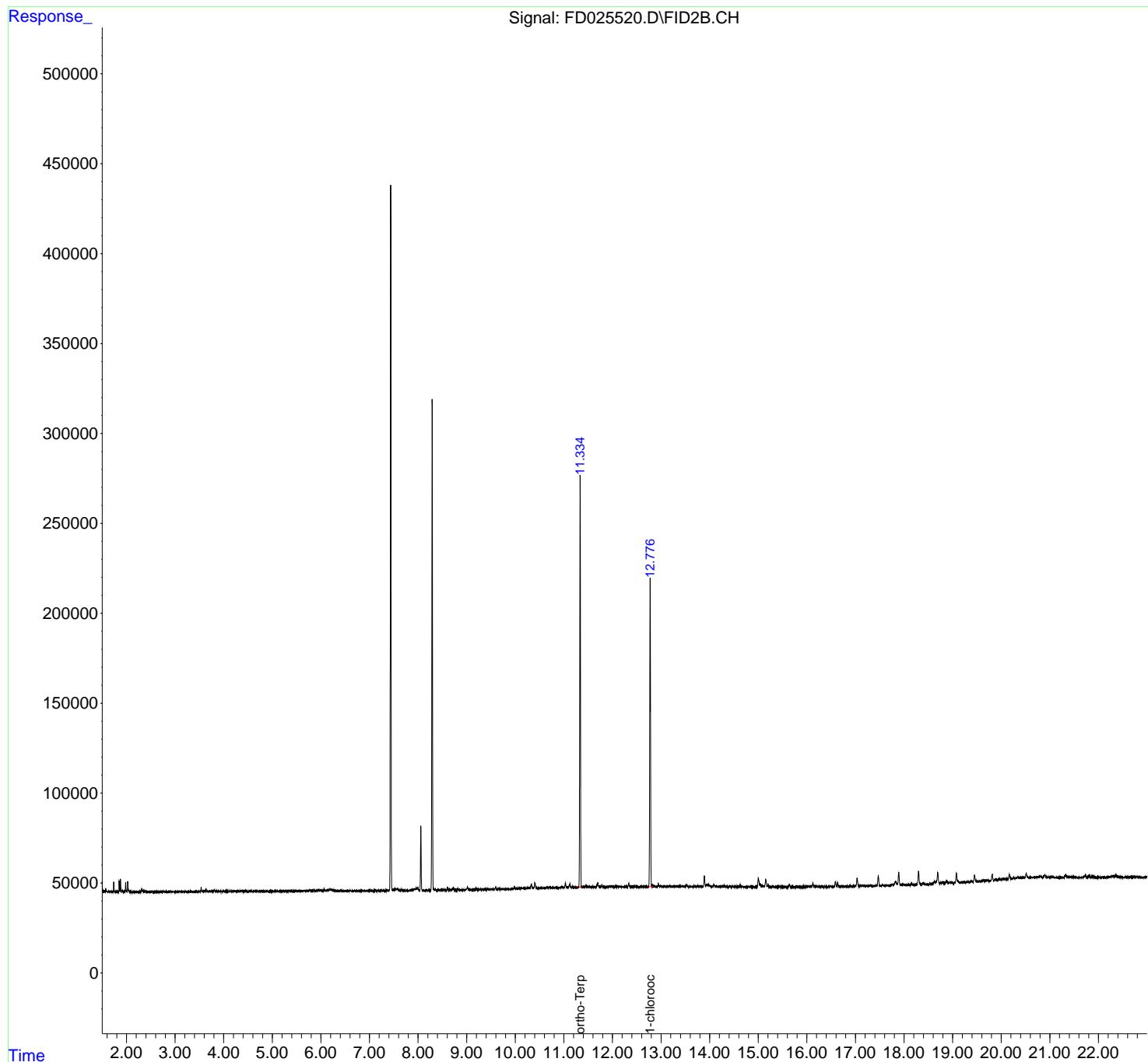
Target Compounds

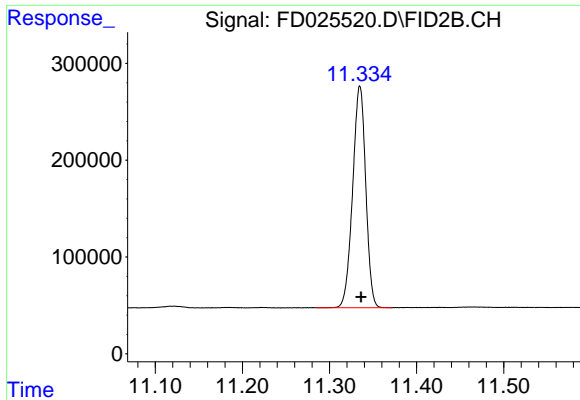
(f)=RT Delta > 1/2 Window (m)=manual int.

Data Path : Z:\pestpcbsrv\HPCHEM1\FID_D\Data\FD083018AL\
 Data File : FD025520.D
 Signal(s) : FID2B.CH
 Acq On : 30 Aug 2018 17:10
 Operator : AJ\SJ
 Sample : J4707-01D
 Misc :
 ALS Vial : 59 Sample Multiplier: 1

Integration File: autoint1.e
 Quant Time: Aug 31 05:38:45 2018
 Quant Method : Z:\pestpcbsrv\HPCHEM1\FID_D\methods\Alaphatic EPH 080218.M
 Quant Title : GC Extractables
 QLast Update : Thu Aug 02 16:12:55 2018
 Response via : Initial Calibration
 Integrator: ChemStation 6890 Scale Mode: Large solvent peaks clipped

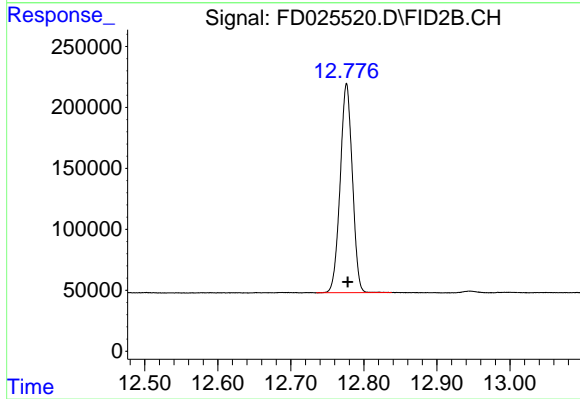
Volume Inj. : 1 ul
 Signal Phase : Rxi-1ms
 Signal Info : 20M x 0.18mm x 0.18um





#9 ortho-Terphenyl (SURR)

R.T.: 11.335 min
Delta R.T.: -0.001 min
Response: 2389000
Conc: 28.44 ug/ml



#12 1-chlorooctadecane (SURR)

R.T.: 12.776 min
Delta R.T.: -0.002 min
Response: 1988158
Conc: 28.84 ug/ml