

Data Path : Z:\pestpcbsrv\HPCHEM1\FID_D\Data\FD090719AL\
 Data File : FD030547.D
 Signal(s) : FID2B.CH
 Acq On : 07 Sep 2019 16:00
 Operator : DD\AJ
 Sample : K4757-17
 Misc :
 ALS Vial : 57 Sample Multiplier: 1

Integration File: autoint1.e
 Quant Time: Sep 09 02:22:19 2019
 Quant Method : Z:\pestpcbsrv\HPCHEM1\FID_D\methods\Alaphatic EPH 090319.M
 Quant Title : GC Extractables
 QLast Update : Wed Sep 04 04:22:49 2019
 Response via : Initial Calibration
 Integrator: ChemStation 6890 Scale Mode: Large solvent peaks clipped

Volume Inj. : 1 ul
 Signal Phase : Rxi-1ms
 Signal Info : 20M x 0.18mm x 0.18um

| Compound | R.T. | Response | Conc Units |
|--------------------------------|--------|------------|--------------|
| System Monitoring Compounds | | | |
| 9) S ortho-Terphenyl (SURR) | 11.507 | 4909178 | 33.751 ug/ml |
| Spiked Amount | 50.000 | Recovery = | 67.50% |
| 12) S 1-chlorooctadecane (S... | 12.935 | 3740471 | 34.249 ug/ml |
| Spiked Amount | 50.000 | Recovery = | 68.50% |

Target Compounds

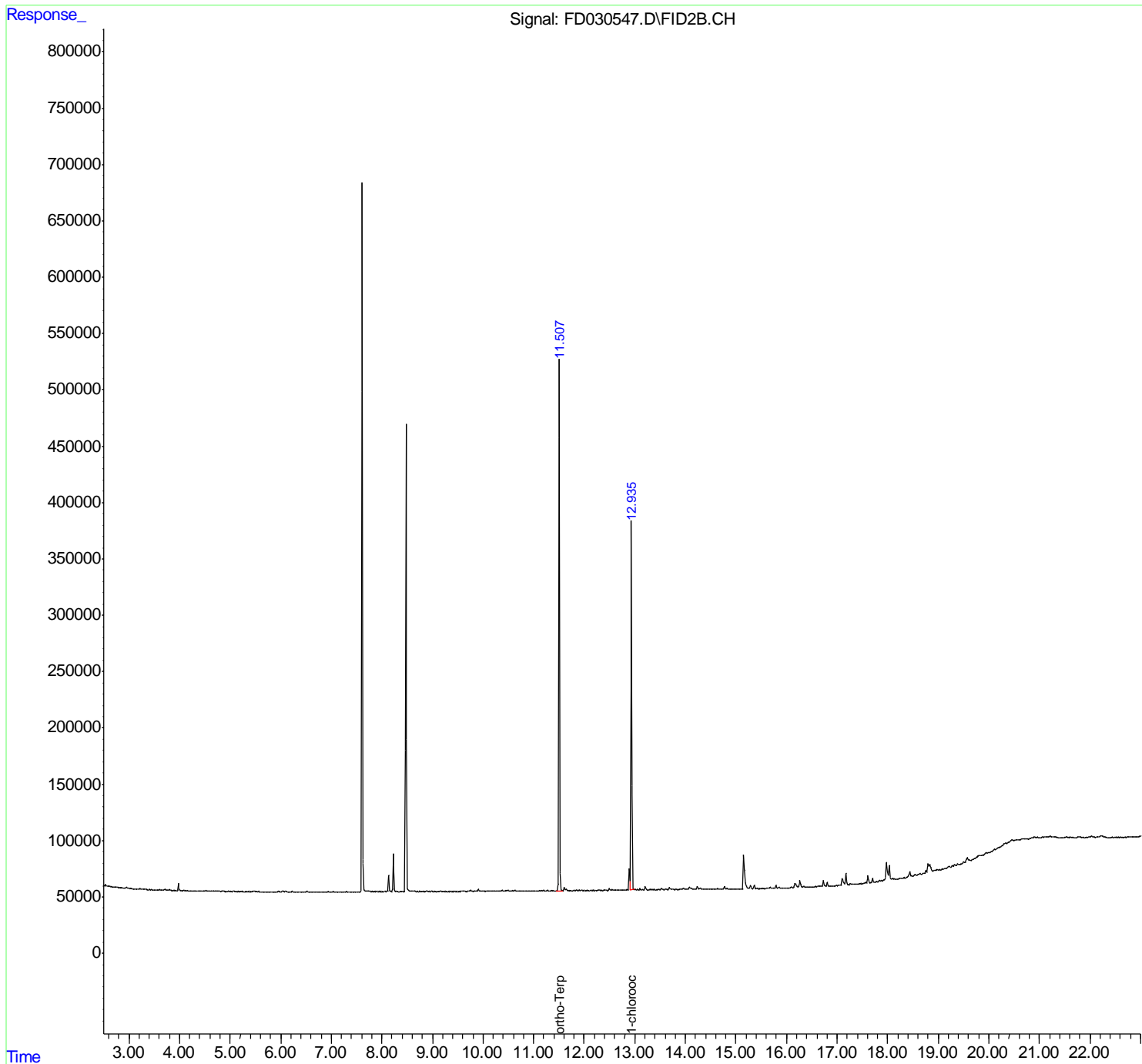
(f)=RT Delta > 1/2 Window

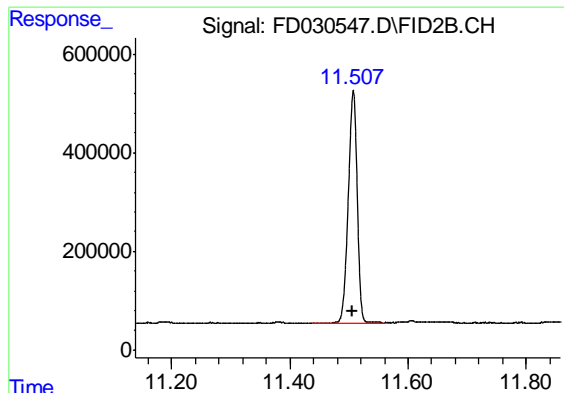
(m)=manual int.

Data Path : Z:\pestpcbsrv\HPCHEM1\FID_D\Data\FD090719AL\
 Data File : FD030547.D
 Signal(s) : FID2B.CH
 Acq On : 07 Sep 2019 16:00
 Operator : DD\AJ
 Sample : K4757-17
 Misc :
 ALS Vial : 57 Sample Multiplier: 1

Integration File: autoint1.e
 Quant Time: Sep 09 02:22:19 2019
 Quant Method : Z:\pestpcbsrv\HPCHEM1\FID_D\methods\Alaphatic EPH 090319.M
 Quant Title : GC Extractables
 QLast Update : Wed Sep 04 04:22:49 2019
 Response via : Initial Calibration
 Integrator: ChemStation 6890 Scale Mode: Large solvent peaks clipped

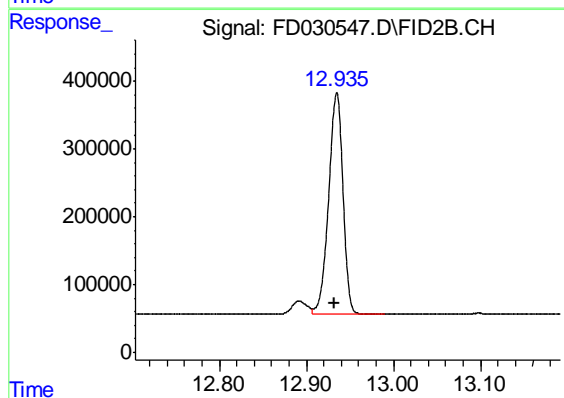
Volume Inj. : 1 ul
 Signal Phase : Rxi-1ms
 Signal Info : 20M x 0.18mm x 0.18um





#9 ortho-Terphenyl (SURR)

R.T.: 11.507 min
Delta R.T.: 0.002 min
Response: 4909178
Conc: 33.75 ug/ml



#12 1-chlorooctadecane (SURR)

R.T.: 12.935 min
Delta R.T.: 0.002 min
Response: 3740471
Conc: 34.25 ug/ml