

Data Path : Z:\pestpcbsrv\HPCHEM1\FID\_D\Data\FD090722AL\  
 Data File : FD043807.D  
 Signal(s) : FID2B.ch  
 Acq On : 07 Sep 2022 09:14  
 Operator : YP/AJ  
 Sample : I.BLK  
 Misc :  
 ALS Vial : 51 Sample Multiplier: 1

Instrument :  
 FID\_D  
 ClientSampleId :

Integration File: autoint1.e  
 Quant Time: Sep 07 18:03:51 2022  
 Quant Method : Z:\pestpcbsrv\HPCHEM1\FID\_D\methods\Aliphatic EPH 090722.M  
 Quant Title : GC Extractables  
 QLast Update : Wed Sep 07 17:10:44 2022  
 Response via : Initial Calibration  
 Integrator: ChemStation

Volume Inj. : 1 ul  
 Signal Phase : Rxi-1ms  
 Signal Info : 20M x 0.18mm x 0.18um

Compound	R.T.	Response	Conc Units
-----			
System Monitoring Compounds			
Target Compounds			
-----			

(f)=RT Delta > 1/2 Window

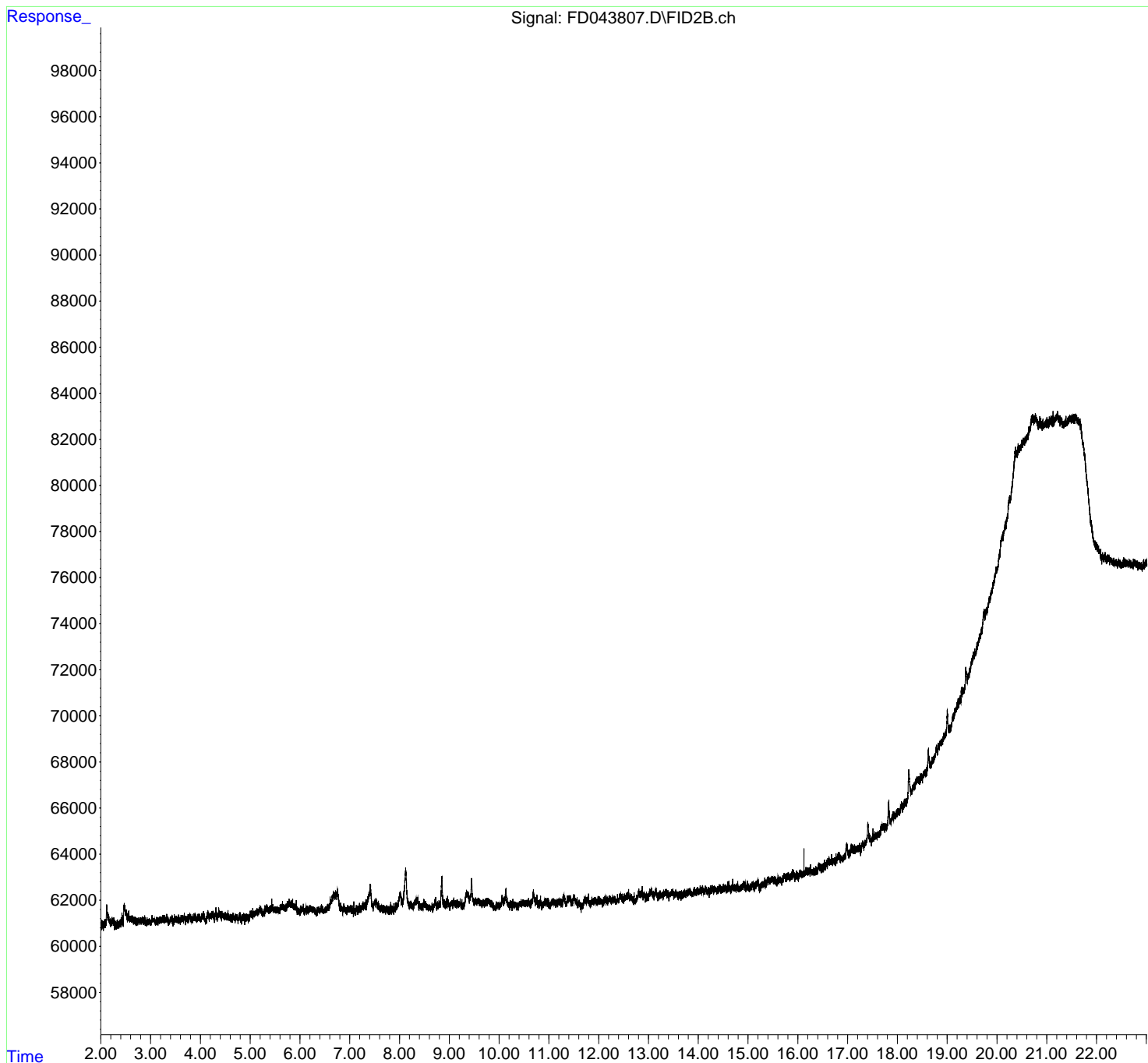
(m)=manual int.

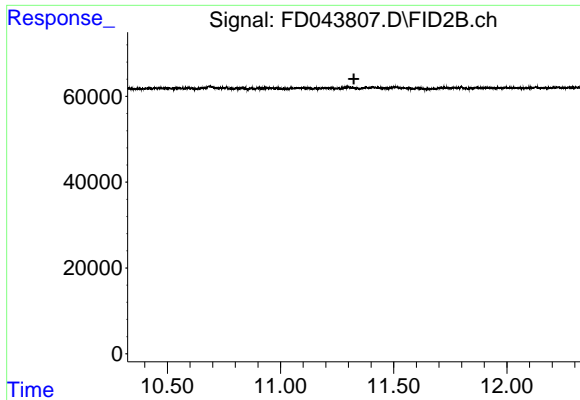
Data Path : Z:\pestpcbsrv\HPCHEM1\FID\_D\Data\FD090722AL\  
 Data File : FD043807.D  
 Signal(s) : FID2B.ch  
 Acq On : 07 Sep 2022 09:14  
 Operator : YP/AJ  
 Sample : I.BLK  
 Misc :  
 ALS Vial : 51 Sample Multiplier: 1

Instrument :  
 FID\_D  
 ClientSampleId :

Integration File: autoint1.e  
 Quant Time: Sep 07 18:03:51 2022  
 Quant Method : Z:\pestpcbsrv\HPCHEM1\FID\_D\methods\Aliphatic EPH 090722.M  
 Quant Title : GC Extractables  
 QLast Update : Wed Sep 07 17:10:44 2022  
 Response via : Initial Calibration  
 Integrator: ChemStation

Volume Inj. : 1 ul  
 Signal Phase : Rxi-1ms  
 Signal Info : 20M x 0.18mm x 0.18um

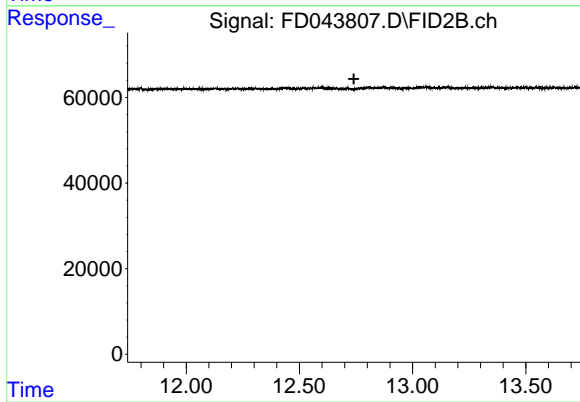




#9 ortho-Terphenyl (SURR)

R.T.: 0.000 min  
Exp R.T. : 11.324 min  
Response: 0  
Conc: N.D.

Instrument :  
FID\_D  
ClientSampleId :



#12 1-chlorooctadecane (SURR)

R.T.: 0.000 min  
Exp R.T. : 12.741 min  
Response: 0  
Conc: N.D.