

Data Path : Z:\pestpcbsrv\HPCHEM1\FID_D\Data\FD091119AL\
 Data File : FD030638.D
 Signal(s) : FID2B.CH
 Acq On : 11 Sep 2019 17:47
 Operator : DD\AJ
 Sample : K4819-09D
 Misc :
 ALS Vial : 61 Sample Multiplier: 1

Integration File: autoint1.e
 Quant Time: Sep 12 05:15:32 2019
 Quant Method : Z:\pestpcbsrv\HPCHEM1\FID_D\methods\Alaphatic EPH 090319.M
 Quant Title : GC Extractables
 QLast Update : Wed Sep 04 04:22:49 2019
 Response via : Initial Calibration
 Integrator: ChemStation 6890 Scale Mode: Large solvent peaks clipped

Volume Inj. : 1 ul
 Signal Phase : Rxi-1ms
 Signal Info : 20M x 0.18mm x 0.18um

Compound	R.T.	Response	Conc Units
System Monitoring Compounds			
9) S ortho-Terphenyl (SURR)	11.497	5738560	39.453 ug/ml
Spiked Amount	50.000	Recovery =	78.91%
12) S 1-chlorooctadecane (S...	12.924	4541945	41.587 ug/ml
Spiked Amount	50.000	Recovery =	83.17%

Target Compounds

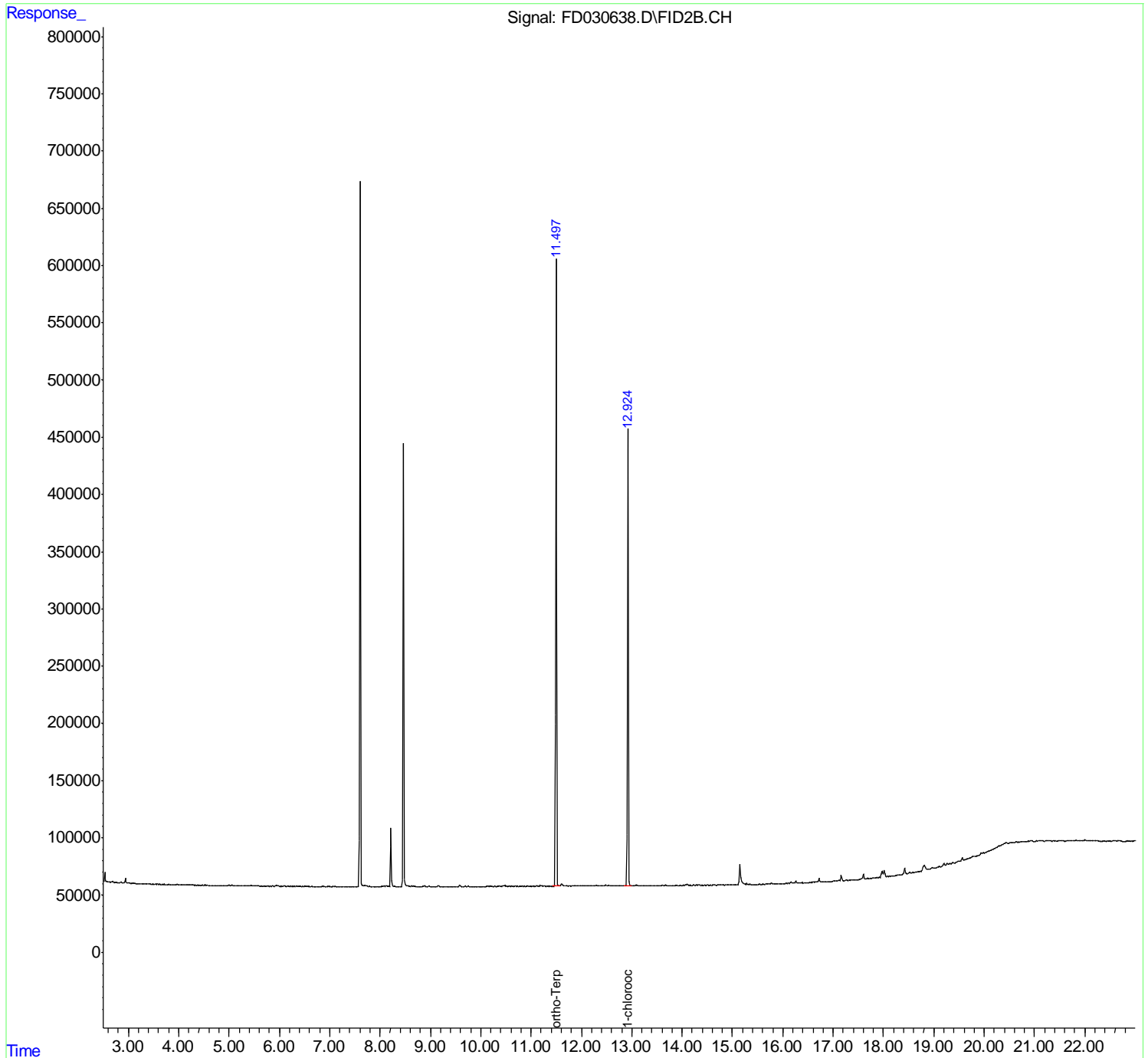
(f)=RT Delta > 1/2 Window

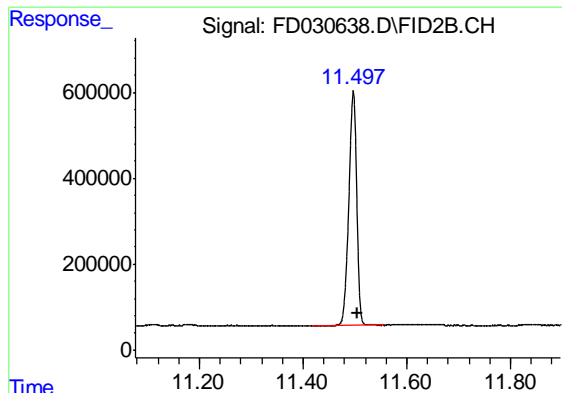
(m)=manual int.

Data Path : Z:\pestpcbsrv\HPCHEM1\FID_D\Data\FD091119AL\
 Data File : FD030638.D
 Signal(s) : FID2B.CH
 Acq On : 11 Sep 2019 17:47
 Operator : DD\AJ
 Sample : K4819-09D
 Misc :
 ALS Vial : 61 Sample Multiplier: 1

Integration File: autoint1.e
 Quant Time: Sep 12 05:15:32 2019
 Quant Method : Z:\pestpcbsrv\HPCHEM1\FID_D\methods\Alaphatic EPH 090319.M
 Quant Title : GC Extractables
 QLast Update : Wed Sep 04 04:22:49 2019
 Response via : Initial Calibration
 Integrator: ChemStation 6890 Scale Mode: Large solvent peaks clipped

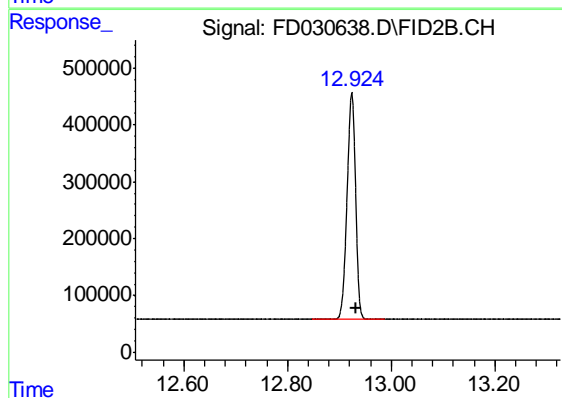
Volume Inj. : 1 ul
 Signal Phase : Rxi-1ms
 Signal Info : 20M x 0.18mm x 0.18um





#9 ortho-Terphenyl (SURR)

R.T.: 11.497 min
Delta R.T.: -0.008 min
Response: 5738560
Conc: 39.45 ug/ml



#12 1-chlorooctadecane (SURR)

R.T.: 12.924 min
Delta R.T.: -0.009 min
Response: 4541945
Conc: 41.59 ug/ml