

Data Path : Z:\pestpcbsrv\HPCHEM1\FID\_D\Data\FD091319AL\  
 Data File : FD030672.D  
 Signal(s) : FID2B.CH  
 Acq On : 13 Sep 2019 8:37  
 Operator : DD\AJ  
 Sample : 20 PPM ALIPHATIC HC STD  
 Misc :  
 ALS Vial : 52 Sample Multiplier: 1

Integration File: autoint1.e  
 Quant Time: Sep 13 22:58:57 2019  
 Quant Method : Z:\pestpcbsrv\HPCHEM1\FID\_D\methods\Alaphatic EPH 090319.M  
 Quant Title : GC Extractables  
 QLast Update : Wed Sep 04 04:22:49 2019  
 Response via : Initial Calibration  
 Integrator: ChemStation 6890 Scale Mode: Large solvent peaks clipped

Volume Inj. : 1 ul  
 Signal Phase : Rxi-1ms  
 Signal Info : 20M x 0.18mm x 0.18um

Compound	R.T.	Response	Conc Units
-----			
System Monitoring Compounds			
9) S ortho-Terphenyl (SURR)	11.493	2642576	18.168 ug/ml
Spiked Amount	50.000	Recovery	= 36.34%
12) S 1-chlorooctadecane (S...	12.921	1972440	18.060 ug/ml
Spiked Amount	50.000	Recovery	= 36.12%
Target Compounds			
1) T n-Nonane (C9)	3.308	2448553	19.616 ug/ml
2) T n-Decane (C10)	4.367	2460530	19.665 ug/ml
3) T A~Naphthalene (C11.7)	5.942	2748053	19.597 ug/ml
4) T n-Dodecane (C12)	6.373	2482186	19.620 ug/ml
5) T A~2-methylnaphthalene...	6.992	2764480	19.506 ug/ml
6) T n-Tetradecane (C14)	8.157	2474828	19.446 ug/ml
7) T n-Hexadecane (C16)	9.747	2447529	19.175 ug/ml
8) T n-Octadecane (C18)	11.180	2409838	18.798 ug/ml
10) T n-Eicosane (C20)	12.480	2343602	18.390 ug/ml
11) T n-Heneicosane (C21)	13.087	2326857	18.189 ug/ml
13) T n-Docosane (C22)	13.669	2277505	17.881 ug/ml
14) T n-Tetracosane (C24)	14.764	2216626	17.456 ug/ml
15) T n-Hexacosane (C26)	15.776	2126779	17.098 ug/ml
16) T n-Octacosane (C28)	16.719	2070458	16.981 ug/ml
17) T n-Tricontane (C30)	17.599	2062465	17.347 ug/ml
18) T n-Dotriacontane (C32)	18.425	2081136	18.150 ug/ml
19) T n-Tetratriacontane (C34)	19.201	2099669	19.340 ug/ml
20) T n-Hexatriacontane (C36)	19.934	2696407	26.268 ug/ml
21) T n-Octatriacontane (C38)	20.641	2884753	29.730 ug/ml
22) T n-Tetracontane (C40)	21.490	1983404	19.343 ug/ml
-----			

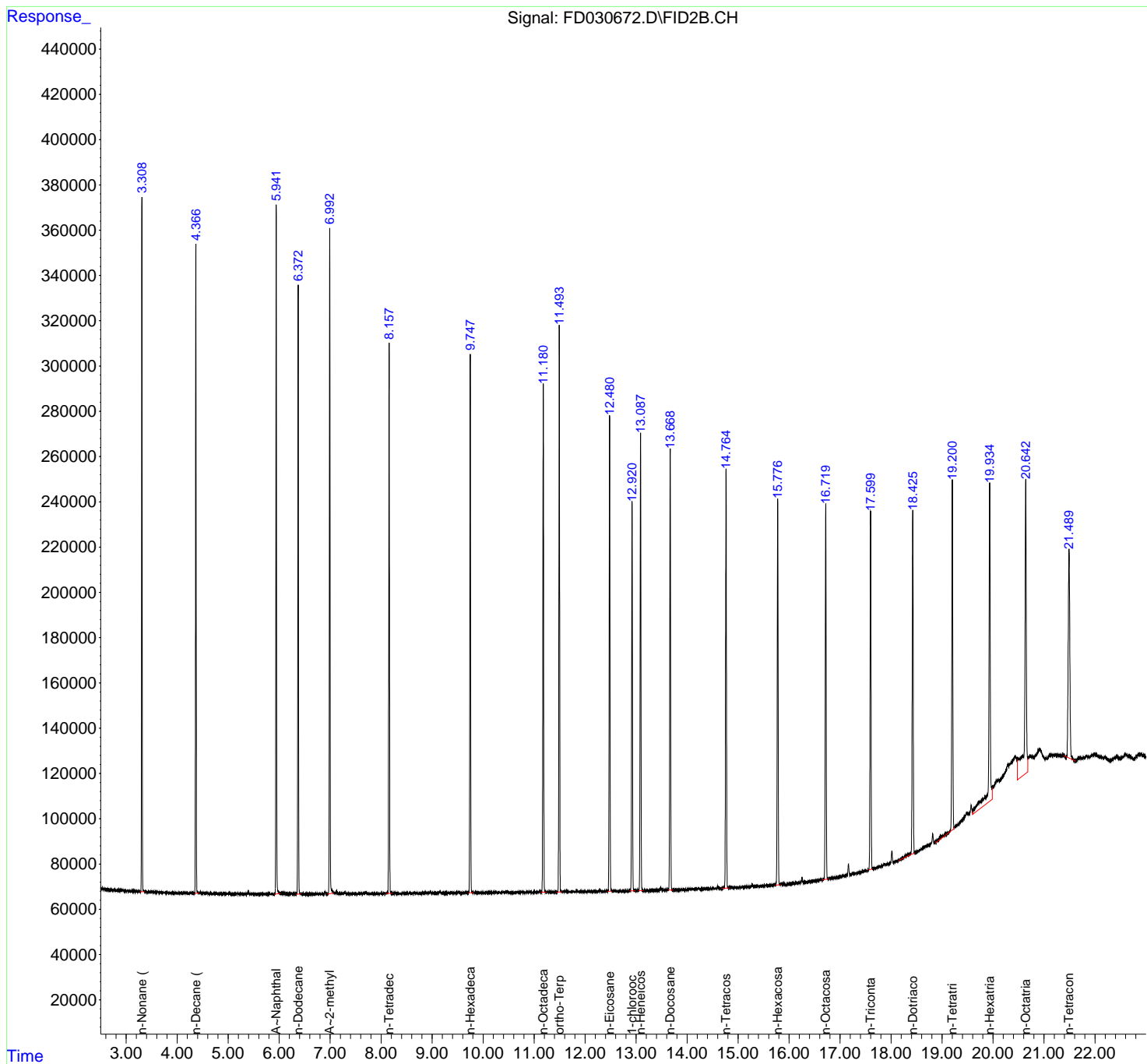
(f)=RT Delta > 1/2 Window

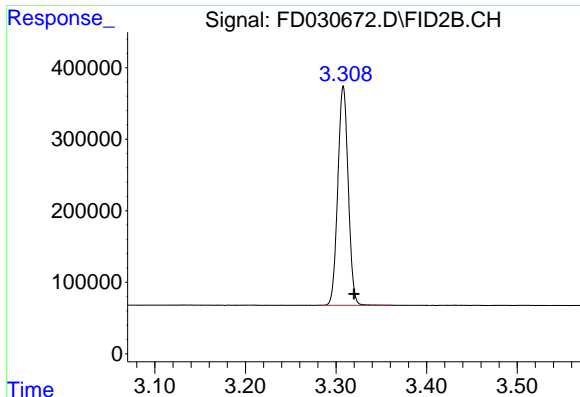
(m)=manual int.

Data Path : Z:\pestpcbsrv\HPCHEM1\FID\_D\Data\FD091319AL\  
 Data File : FD030672.D  
 Signal(s) : FID2B.CH  
 Acq On : 13 Sep 2019 8:37  
 Operator : DD\AJ  
 Sample : 20 PPM ALIPHATIC HC STD  
 Misc :  
 ALS Vial : 52 Sample Multiplier: 1

Integration File: autoint1.e  
 Quant Time: Sep 13 22:58:57 2019  
 Quant Method : Z:\pestpcbsrv\HPCHEM1\FID\_D\methods\Aliphatic EPH 090319.M  
 Quant Title : GC Extractables  
 QLast Update : Wed Sep 04 04:22:49 2019  
 Response via : Initial Calibration  
 Integrator: ChemStation 6890 Scale Mode: Large solvent peaks clipped

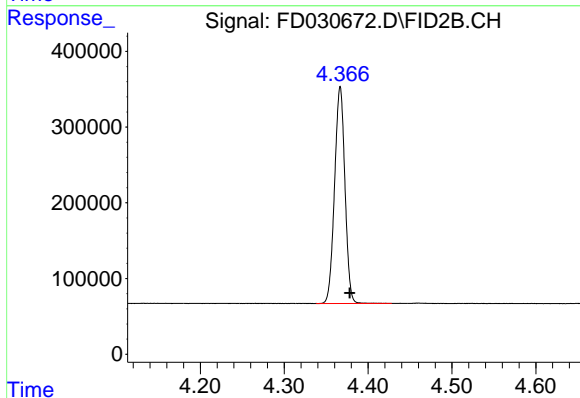
Volume Inj. : 1 ul  
 Signal Phase : Rxi-1ms  
 Signal Info : 20M x 0.18mm x 0.18um





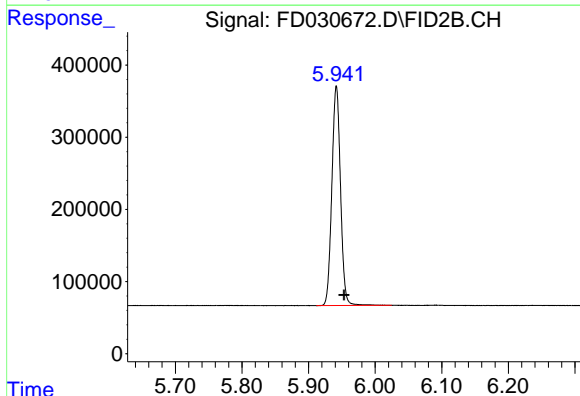
#1 n-Nonane (C9)

R.T.: 3.308 min  
Delta R.T.: -0.012 min  
Response: 2448553  
Conc: 19.62 ug/ml



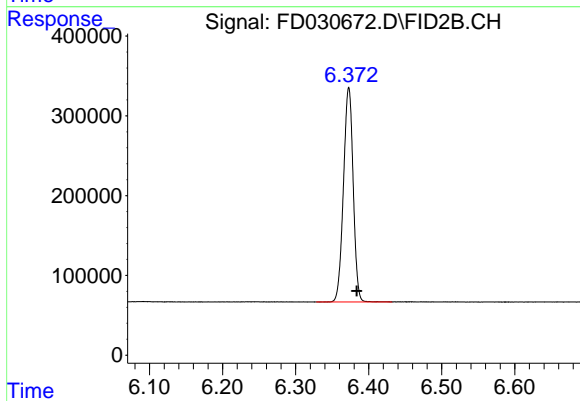
#2 n-Decane (C10)

R.T.: 4.367 min  
Delta R.T.: -0.011 min  
Response: 2460530  
Conc: 19.67 ug/ml



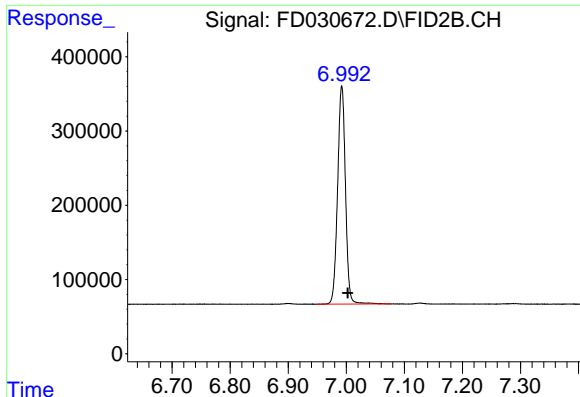
#3 A~Naphthalene (C11.7)

R.T.: 5.942 min  
Delta R.T.: -0.011 min  
Response: 2748053  
Conc: 19.60 ug/ml



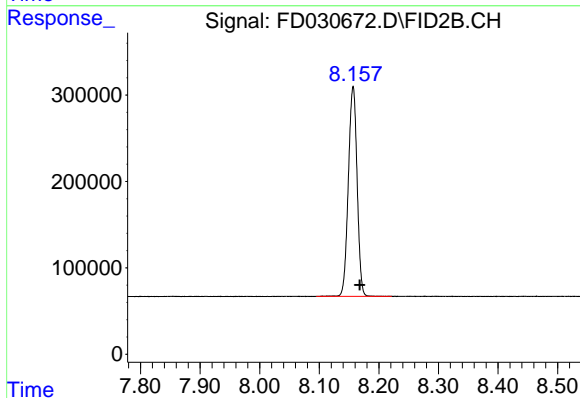
#4 n-Dodecane (C12)

R.T.: 6.373 min  
Delta R.T.: -0.011 min  
Response: 2482186  
Conc: 19.62 ug/ml



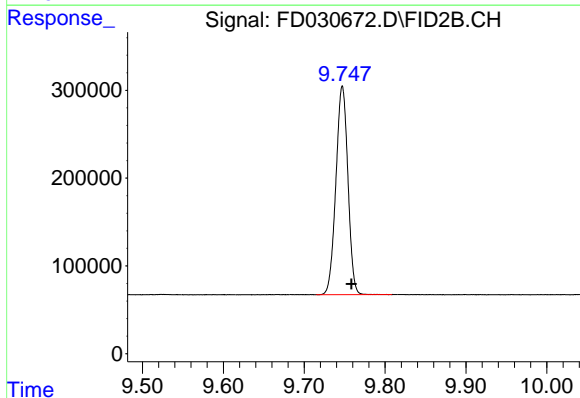
#5 A~2-methylnaphthalene (C12.89)

R.T.: 6.992 min  
Delta R.T.: -0.010 min  
Response: 2764480  
Conc: 19.51 ug/ml



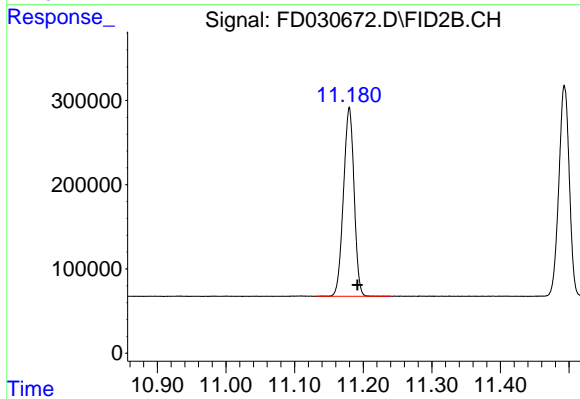
#6 n-Tetradecane (C14)

R.T.: 8.157 min  
Delta R.T.: -0.011 min  
Response: 2474828  
Conc: 19.45 ug/ml



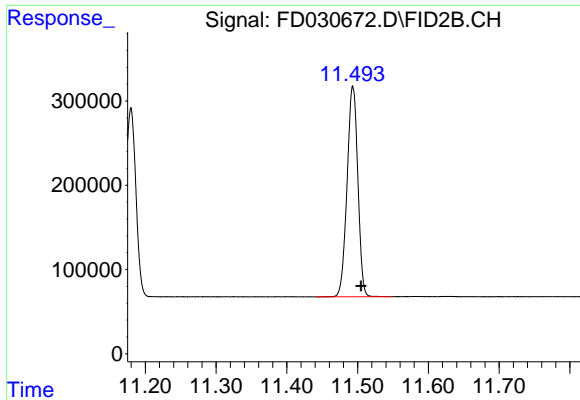
#7 n-Hexadecane (C16)

R.T.: 9.747 min  
Delta R.T.: -0.011 min  
Response: 2447529  
Conc: 19.17 ug/ml



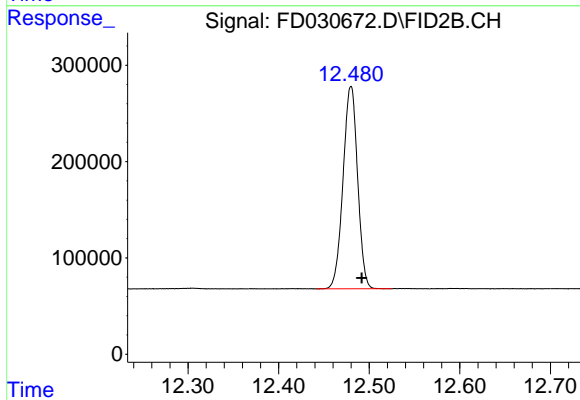
#8 n-Octadecane (C18)

R.T.: 11.180 min  
Delta R.T.: -0.012 min  
Response: 2409838  
Conc: 18.80 ug/ml



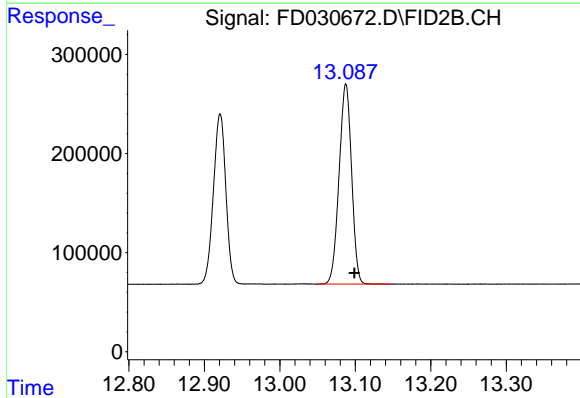
#9 ortho-Terphenyl (SURR)

R.T.: 11.493 min  
 Delta R.T.: -0.012 min  
 Response: 2642576  
 Conc: 18.17 ug/ml



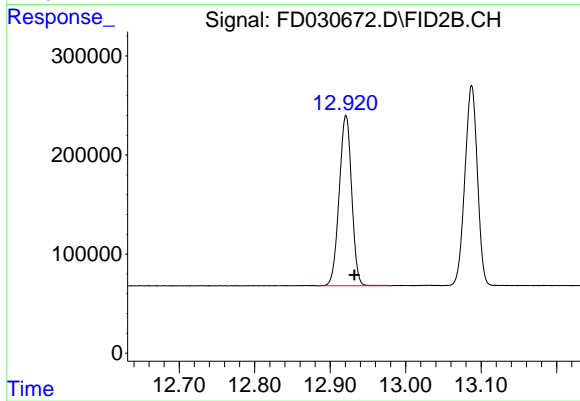
#10 n-Eicosane (C20)

R.T.: 12.480 min  
 Delta R.T.: -0.012 min  
 Response: 2343602  
 Conc: 18.39 ug/ml



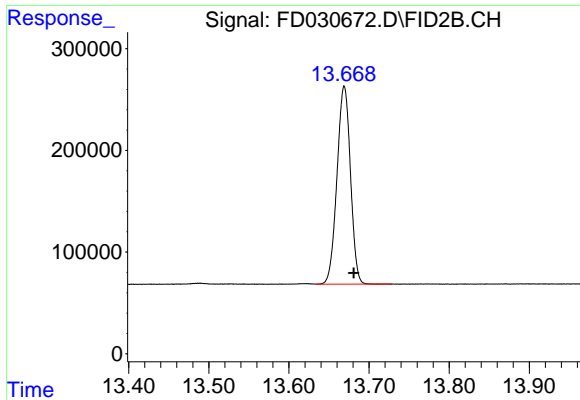
#11 n-Heneicosane (C21)

R.T.: 13.087 min  
 Delta R.T.: -0.012 min  
 Response: 2326857  
 Conc: 18.19 ug/ml

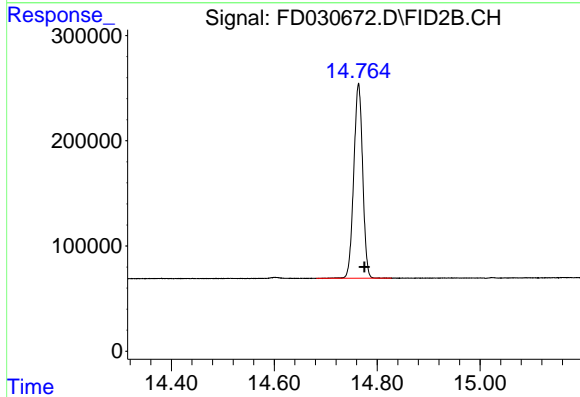


#12 1-chlorooctadecane (SURR)

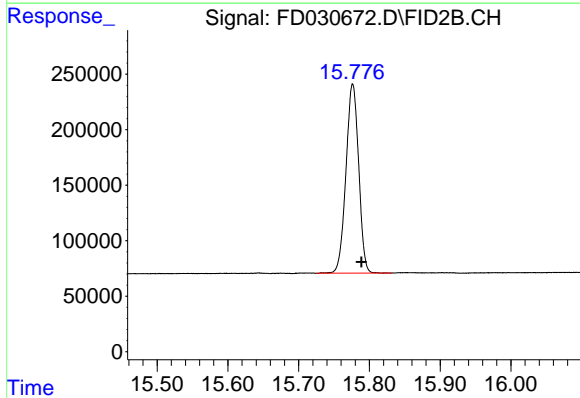
R.T.: 12.921 min  
 Delta R.T.: -0.011 min  
 Response: 1972440  
 Conc: 18.06 ug/ml



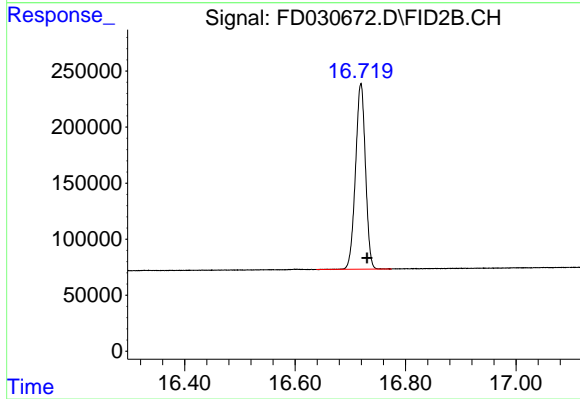
#13 n-Docosane (C22)  
R.T.: 13.669 min  
Delta R.T.: -0.012 min  
Response: 2277505  
Conc: 17.88 ug/ml



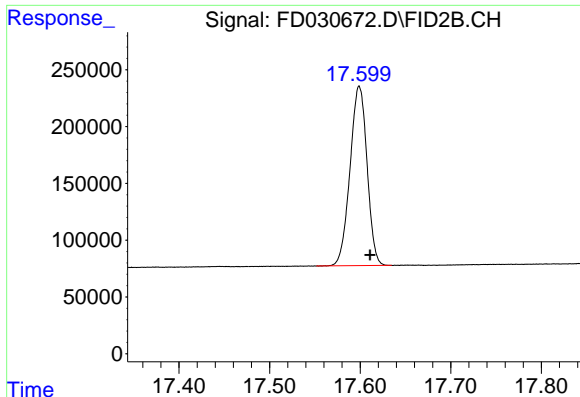
#14 n-Tetracosane (C24)  
R.T.: 14.764 min  
Delta R.T.: -0.011 min  
Response: 2216626  
Conc: 17.46 ug/ml



#15 n-Hexacosane (C26)  
R.T.: 15.776 min  
Delta R.T.: -0.012 min  
Response: 2126779  
Conc: 17.10 ug/ml

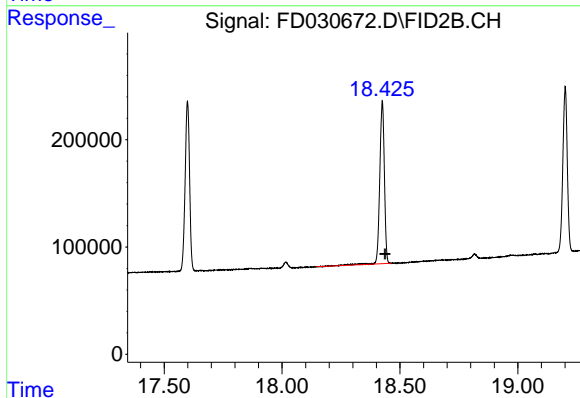


#16 n-Octacosane (C28)  
R.T.: 16.719 min  
Delta R.T.: -0.011 min  
Response: 2070458  
Conc: 16.98 ug/ml



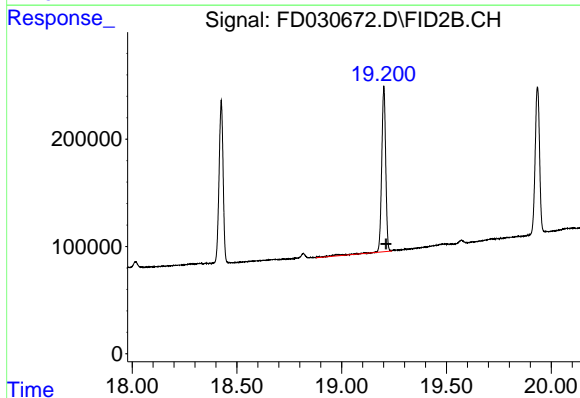
#17 n-Tricontane (C30)

R.T.: 17.599 min  
Delta R.T.: -0.012 min  
Response: 2062465  
Conc: 17.35 ug/ml



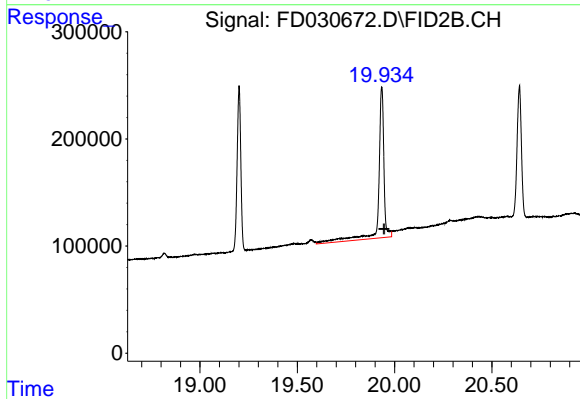
#18 n-Dotriacontane (C32)

R.T.: 18.425 min  
Delta R.T.: -0.011 min  
Response: 2081136  
Conc: 18.15 ug/ml



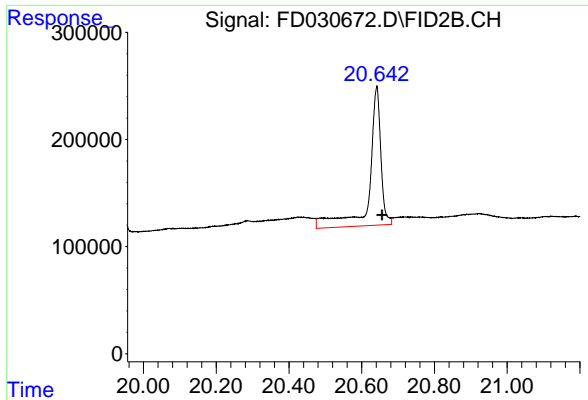
#19 n-Tetratriacontane (C34)

R.T.: 19.201 min  
Delta R.T.: -0.012 min  
Response: 2099669  
Conc: 19.34 ug/ml

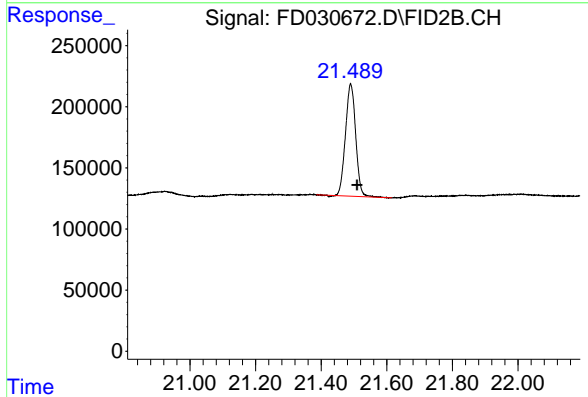


#20 n-Hexatriacontane (C36)

R.T.: 19.934 min  
Delta R.T.: -0.013 min  
Response: 2696407  
Conc: 26.27 ug/ml



#21 n-Octatriacontane (C38)  
R.T.: 20.641 min  
Delta R.T.: -0.015 min  
Response: 2884753  
Conc: 29.73 ug/ml



#22 n-Tetracontane (C40)  
R.T.: 21.490 min  
Delta R.T.: -0.019 min  
Response: 1983404  
Conc: 19.34 ug/ml