

Data Path : Z:\pestpcbsrv\HPCHEM1\FID_D\Data\FD091718AL\
 Data File : FD025606.D
 Signal(s) : FID2B.CH
 Acq On : 18 Sep 2018 7:19
 Operator : AJ\SJ
 Sample : PB112904BL
 Misc :
 ALS Vial : 70 Sample Multiplier: 1

Integration File: autoint1.e
 Quant Time: Sep 18 08:01:49 2018
 Quant Method : Z:\pestpcbsrv\HPCHEM1\FID_D\methods\Alaphatic EPH 091718.M
 Quant Title : GC Extractables
 QLast Update : Tue Sep 18 07:25:24 2018
 Response via : Initial Calibration
 Integrator: ChemStation 6890 Scale Mode: Large solvent peaks clipped

Volume Inj. : 1 ul
 Signal Phase : Rxi-lms
 Signal Info : 20M x 0.18mm x 0.18um

Compound	R.T.	Response	Conc Units

System Monitoring Compounds			
9) S ortho-Terphenyl (SURR)	11.334	4004414	47.722 ug/ml
Spiked Amount	50.000	Recovery	= 95.44%
12) S 1-chlorooctadecane (S...	12.776	3039990	49.791 ug/ml
Spiked Amount	50.000	Recovery	= 99.58%
Target Compounds			
22) T n-Tetracontane (C40)	21.340	671468	12.122 ug/ml

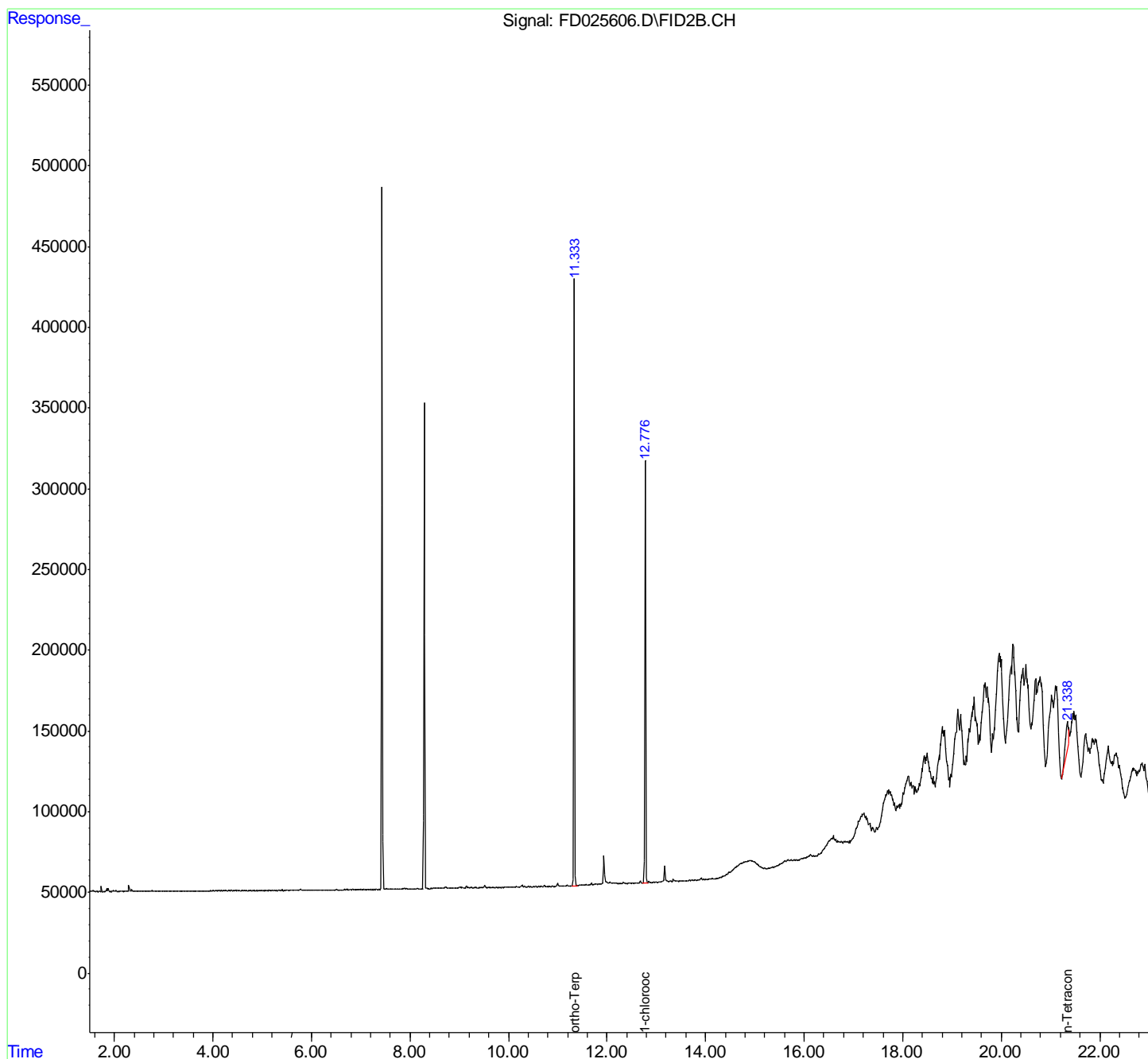
(f)=RT Delta > 1/2 Window

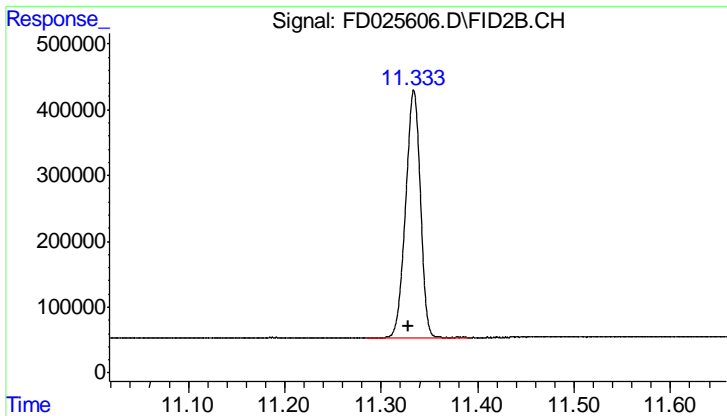
(m)=manual int.

Data Path : Z:\pestpcbsrv\HPCHEM1\FID_D\Data\FD091718AL\
Data File : FD025606.D
Signal(s) : FID2B.CH
Acq On : 18 Sep 2018 7:19
Operator : AJ\SJ
Sample : PB112904BL
Misc :
ALS Vial : 70 Sample Multiplier: 1

Integration File: autoint1.e
Quant Time: Sep 18 08:01:49 2018
Quant Method : Z:\pestpcbsrv\HPCHEM1\FID_D\methods\Alaphatic EPH 091718.M
Quant Title : GC Extractables
QLast Update : Tue Sep 18 07:25:24 2018
Response via : Initial Calibration
Integrator: ChemStation 6890 Scale Mode: Large solvent peaks clipped

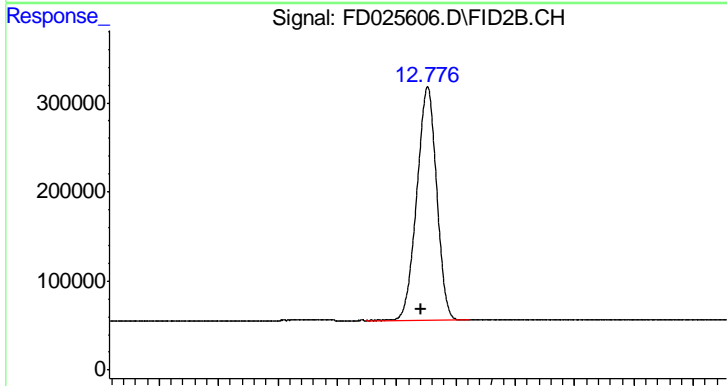
Volume Inj. : 1 ul
Signal Phase : Rxi-lms
Signal Info : 20M x 0.18mm x 0.18um





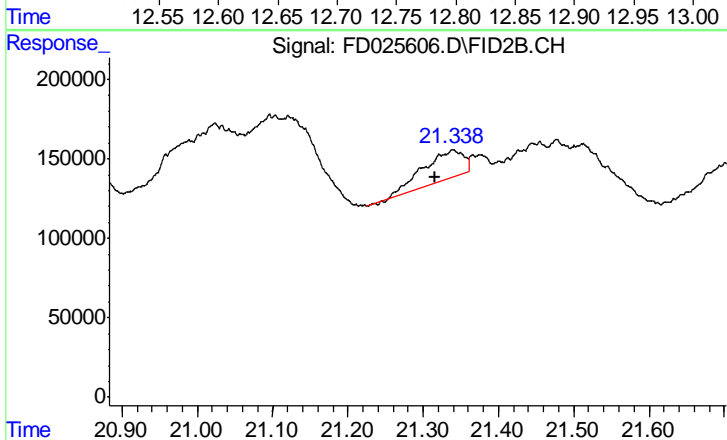
#9 ortho-Terphenyl (SURR)

R.T.: 11.334 min
 Delta R.T.: 0.006 min
 Response: 4004414
 Conc: 47.72 ug/ml



#12 1-chlorooctadecane (SURR)

R.T.: 12.776 min
 Delta R.T.: 0.006 min
 Response: 3039990
 Conc: 49.79 ug/ml



#22 n-Tetracontane (C40)

R.T.: 21.340 min
 Delta R.T.: 0.023 min
 Response: 671468
 Conc: 12.12 ug/ml