

Data Path : Z:\pestpcbsrv\HPCHEM1\FID\_D\Data\FD091818AL\  
 Data File : FD025619.D  
 Signal(s) : FID2B.CH  
 Acq On : 18 Sep 2018 15:57  
 Operator : AJ\SJ  
 Sample : J4936-24DL 20X  
 Misc :  
 ALS Vial : 60 Sample Multiplier: 1

Integration File: autoint1.e  
 Quant Time: Sep 19 01:26:37 2018  
 Quant Method : Z:\pestpcbsrv\HPCHEM1\FID\_D\methods\Alaphatic EPH 091718.M  
 Quant Title : GC Extractables  
 QLast Update : Tue Sep 18 07:25:24 2018  
 Response via : Initial Calibration  
 Integrator: ChemStation 6890 Scale Mode: Large solvent peaks clipped

Volume Inj. : 1 ul  
 Signal Phase : Rxi-lms  
 Signal Info : 20M x 0.18mm x 0.18um

Compound	R.T.	Response	Conc Units
-----			
System Monitoring Compounds			
9) S ortho-Terphenyl (SURR)	11.330	5909886	70.430 ug/ml
Spiked Amount	50.000	Recovery	= 140.86%
12) S 1-chlorooctadecane (S...	12.782	3111643	50.964 ug/ml
Spiked Amount	50.000	Recovery	= 101.93%
Target Compounds			
8) T n-Octadecane (C18)	11.040	1858197	26.137 ug/ml
10) T n-Eicosane (C20)	12.371	3849627	54.239 ug/ml
11) T n-Heneicosane (C21)	12.943	998199	14.547 ug/ml
-----			

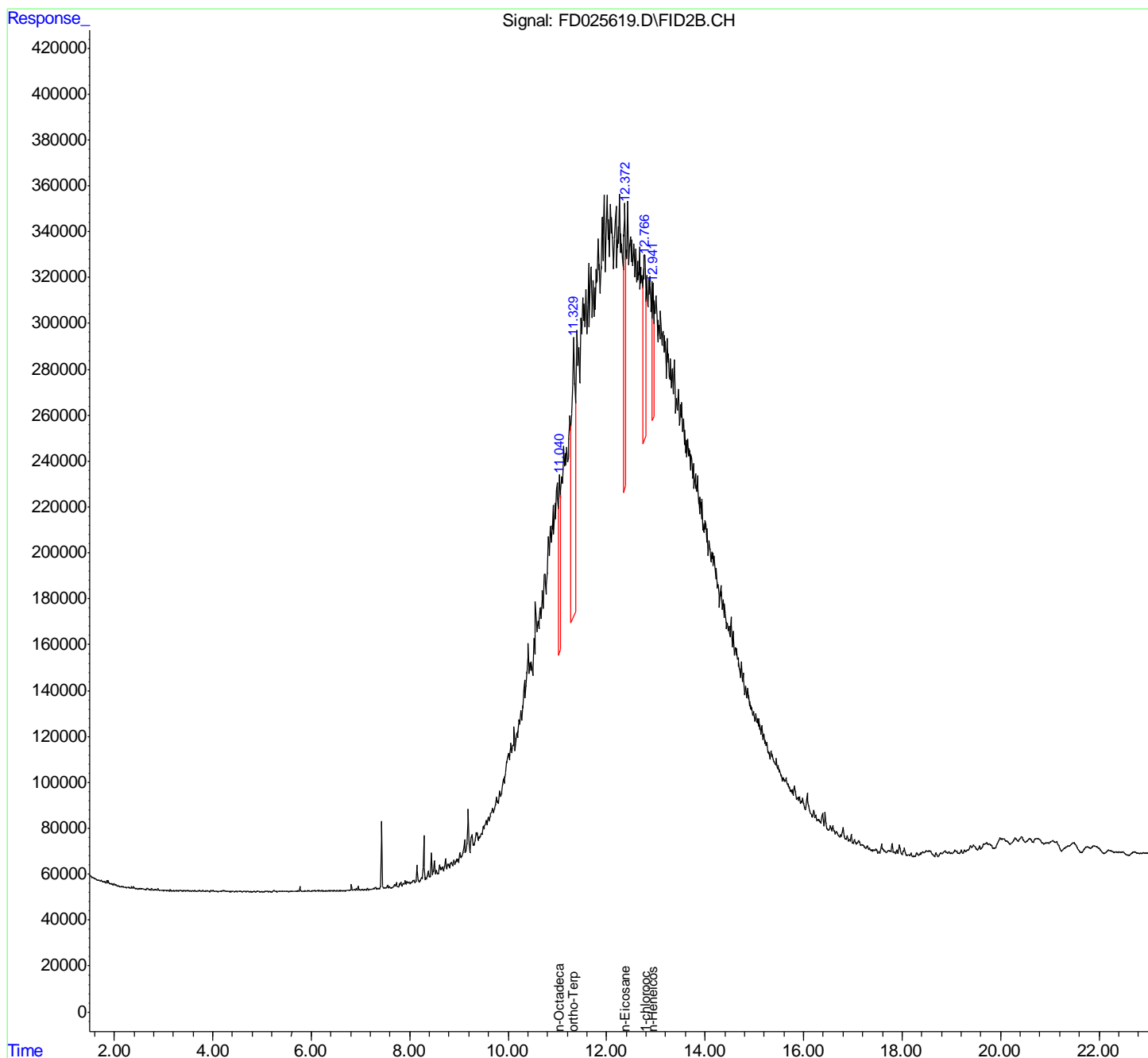
(f)=RT Delta > 1/2 Window

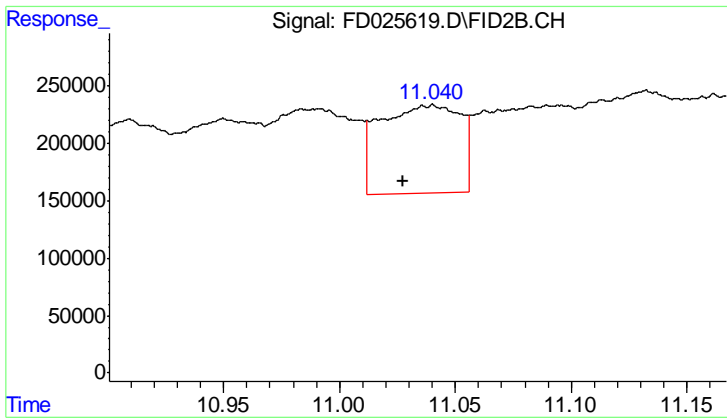
(m)=manual int.

Data Path : Z:\pestpcbsrv\HPCHEM1\FID\_D\Data\FD091818AL\  
 Data File : FD025619.D  
 Signal(s) : FID2B.CH  
 Acq On : 18 Sep 2018 15:57  
 Operator : AJ\SJ  
 Sample : J4936-24DL 20X  
 Misc :  
 ALS Vial : 60 Sample Multiplier: 1

Integration File: autoint1.e  
 Quant Time: Sep 19 01:26:37 2018  
 Quant Method : Z:\pestpcbsrv\HPCHEM1\FID\_D\methods\Alaphatic EPH 091718.M  
 Quant Title : GC Extractables  
 QLast Update : Tue Sep 18 07:25:24 2018  
 Response via : Initial Calibration  
 Integrator: ChemStation 6890 Scale Mode: Large solvent peaks clipped

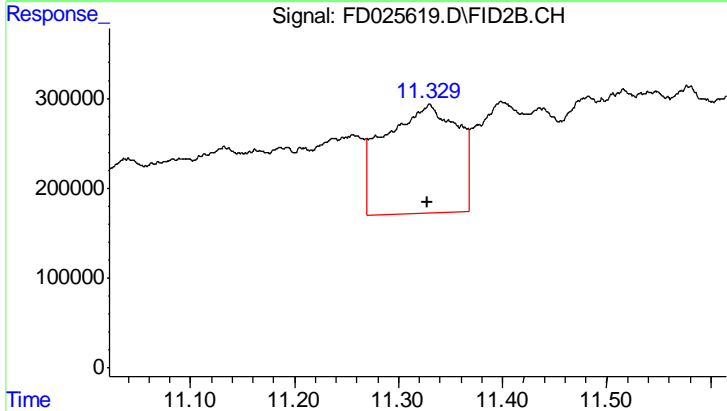
Volume Inj. : 1 ul  
 Signal Phase : Rxi-lms  
 Signal Info : 20M x 0.18mm x 0.18um





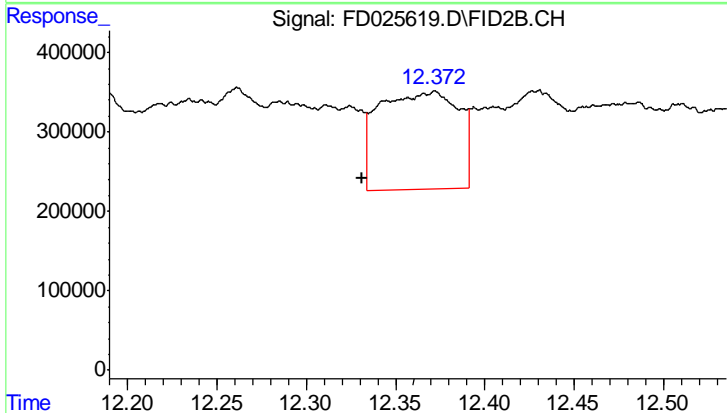
#8 n-Octadecane (C18)

R.T.: 11.040 min  
 Delta R.T.: 0.012 min  
 Response: 1858197  
 Conc: 26.14 ug/ml



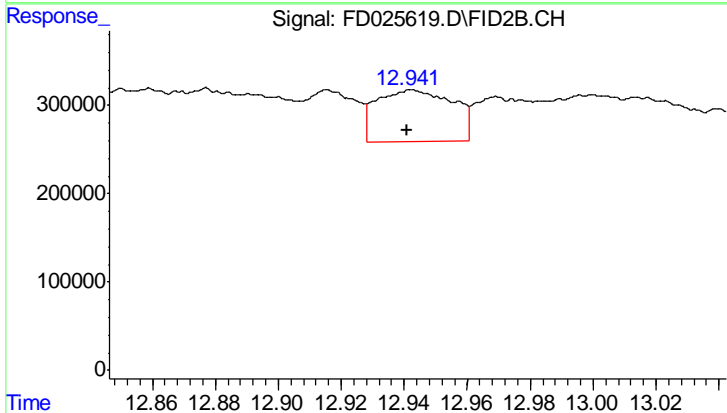
#9 ortho-Terphenyl (SURR)

R.T.: 11.330 min  
 Delta R.T.: 0.002 min  
 Response: 5909886  
 Conc: 70.43 ug/ml



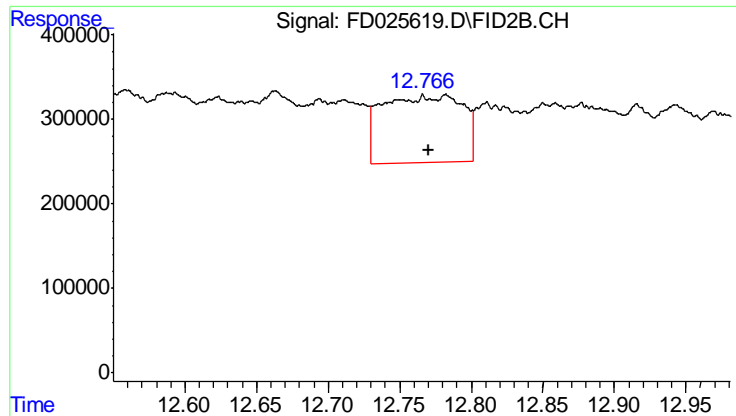
#10 n-Eicosane (C20)

R.T.: 12.371 min  
 Delta R.T.: 0.039 min  
 Response: 3849627  
 Conc: 54.24 ug/ml



#11 n-Heneicosane (C21)

R.T.: 12.943 min  
 Delta R.T.: 0.002 min  
 Response: 998199  
 Conc: 14.55 ug/ml



#12 1-chlorooctadecane (SURR)

R.T.: 12.782 min  
Delta R.T.: 0.012 min  
Response: 3111643  
Conc: 50.96 ug/ml