

Data Path : Z:\pestpcbsrv\HPCHEM1\FID\_D\Data\FD092024AR\  
 Data File : FD048366.D  
 Signal(s) : FID2B.ch  
 Acq On : 20 Sep 2024 21:53  
 Operator : YP/AJ  
 Sample : P4104-21  
 Misc :  
 ALS Vial : 64 Sample Multiplier: 1

Instrument :  
 FID\_D  
 ClientSampleId :

Integration File: autoint1.e  
 Quant Time: Sep 21 02:16:21 2024  
 Quant Method : Z:\pestpcbsrv\HPCHEM1\FID\_D\methods\Aromatic EPH 090624.M  
 Quant Title : GC Extractables  
 QLast Update : Fri Sep 06 11:53:01 2024  
 Response via : Initial Calibration  
 Integrator: ChemStation

Volume Inj. : 1 µl  
 Signal Phase : Rxi-1ms  
 Signal Info : 20M x 0.18mm x 0.18µm

| Compound   | R.T.   | Response                       | Conc Units    |
|--|--------|--------------------------------|---------------|
| -----  |        |                                |               |
| System Monitoring Compounds  |        |                                |               |
| 4) S 2-Bromonaphthalene (S...<br>Spiked Amount 50.000              | 7.388  | 13772173<br>Recovery = 181.62% | 90.809 ug/ml  |
| 6) S 2-Fluorobiphenyl (SURR)<br>Spiked Amount 50.000 Range 0 - 131 | 8.240  | 9908456<br>Recovery = 207.40%# | 103.700 ug/ml |
| 11) S ortho-Terphenyl (SURR)<br>Spiked Amount 50.000               | 11.273 | 5974643<br>Recovery = 69.65%   | 34.823 ug/ml  |
| Target Compounds   |        |                                |               |
| 1) T 1,2,3-Trimethylbenzen...                                      | 4.236  | 45966                          | 0.261 ug/ml   |
| 2) T Naphthalene (C11.7)   | 5.724  | 349904                         | 1.935 ug/ml   |
| 3) T 2-Methylnaphthalene (...)                                     | 6.775  | 3605925                        | 20.155 ug/ml  |
| 5) T Acenaphthylene (C15.06)                                       | 8.039  | 3614308                        | 20.687 ug/ml  |
| 7) T Acenaphthene (C15.5)  | 8.326  | 1634205                        | 9.189 ug/ml   |
| 8) T Fluorene (C16.55)   | 9.136  | 2185795                        | 13.053 ug/ml  |
| 9) T Phenanthrene (C19.36)   | 10.504 | 1274659                        | 7.895 ug/ml   |
| 10) T Anthracene (C19.43)  | 10.597 | 1223691                        | 7.690 ug/ml   |
| 12) T Fluoranthene (C21.85)  | 12.308 | 1013013                        | 6.249 ug/ml   |
| 13) T Pyrene (C20.8)   | 12.600 | 438100                         | 2.732 ug/ml   |
| 14) T Benzo[a]anthracene (C...)                                    | 14.470 | 178909                         | 1.277 ug/ml   |
| 15) T Chrysene (C27.41)  | 14.514 | 89269                          | 0.542 ug/ml   |
| 16) T benzo[b]fluoranthene ...                                     | 16.020 | 149774                         | 1.008 ug/ml   |
| 17) T Bnezo[k]fluoranthene ...                                     | 16.052 | 76820                          | 0.499 ug/ml   |
| 18) T Benzo[a]pyrene (C31.34)                                      | 16.398 | 71967                          | 0.486 ug/ml   |
| 19) T Indeno[1,2,3-cd]pyren...                                     | 17.764 | 361482                         | 3.199 ug/ml   |
| 20) T Dibenz[a,h]anthracene...                                     | 17.764 | 361482                         | 2.369 ug/ml   |
| 21) T Benzo[g,h,i]perylene ...                                     | 18.007 | 166981                         | 1.133 ug/ml   |

(f)=RT Delta > 1/2 Window

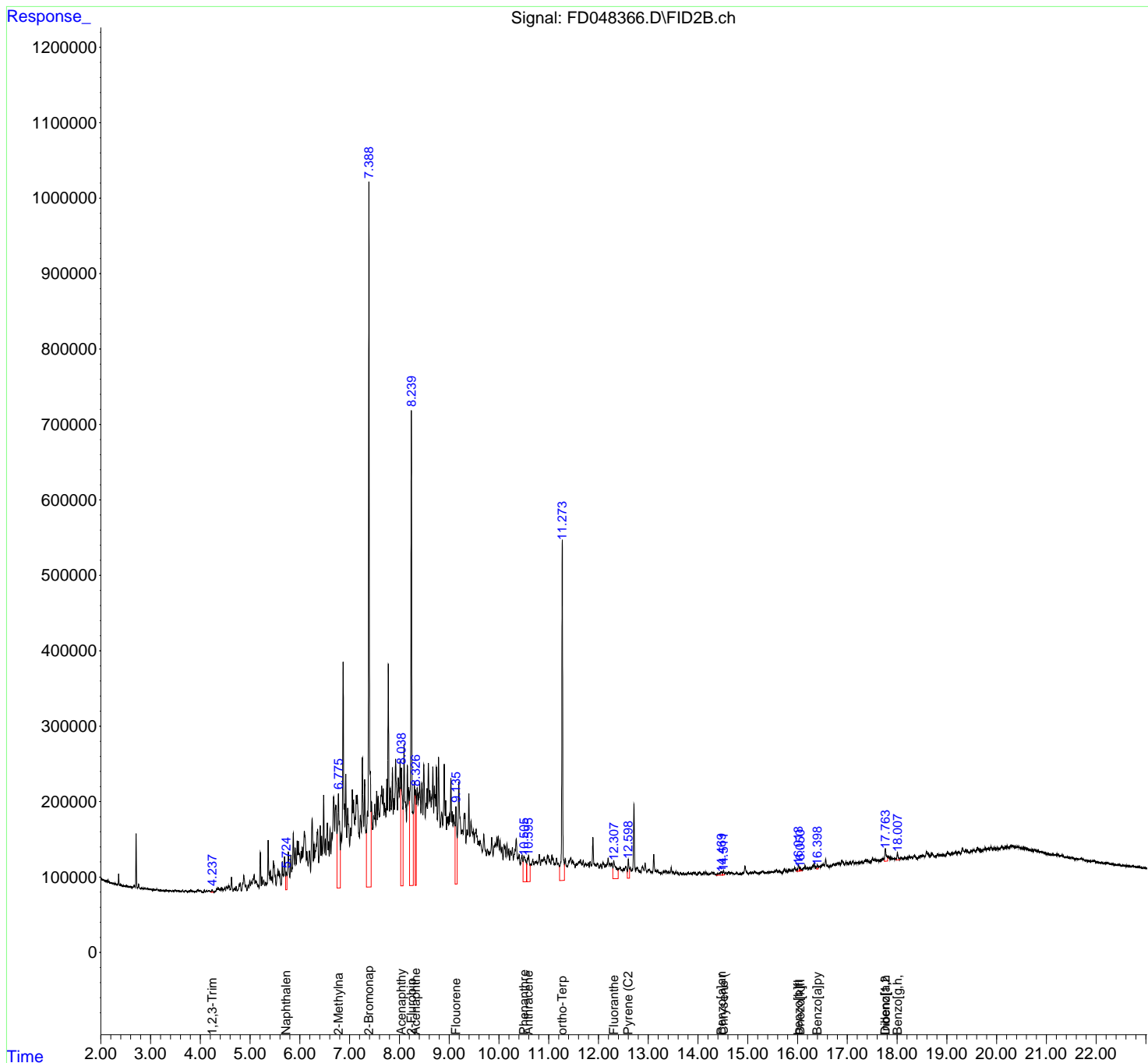
(m)=manual int.

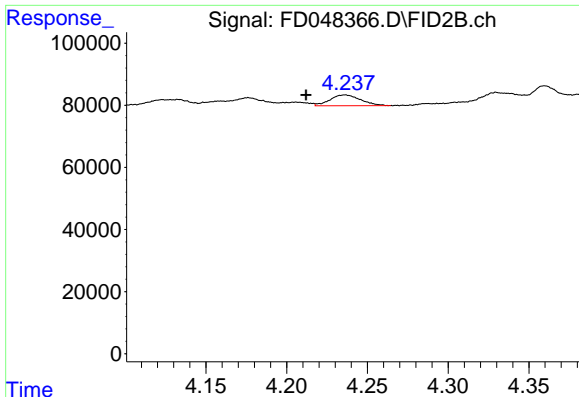
Data Path : Z:\pestpcbsrv\HPCHEM1\FID\_D\Data\FD092024AR\  
 Data File : FD048366.D  
 Signal(s) : FID2B.ch  
 Acq On : 20 Sep 2024 21:53  
 Operator : YP/AJ  
 Sample : P4104-21  
 Misc :  
 ALS Vial : 64 Sample Multiplier: 1

Instrument :  
 FID\_D  
 ClientSampleId :

Integration File: autoint1.e  
 Quant Time: Sep 21 02:16:21 2024  
 Quant Method : Z:\pestpcbsrv\HPCHEM1\FID\_D\methods\Aromatic EPH 090624.M  
 Quant Title : GC Extractables  
 QLast Update : Fri Sep 06 11:53:01 2024  
 Response via : Initial Calibration  
 Integrator: ChemStation

Volume Inj. : 1 µl  
 Signal Phase : Rxi-1ms  
 Signal Info : 20M x 0.18mm x 0.18µm

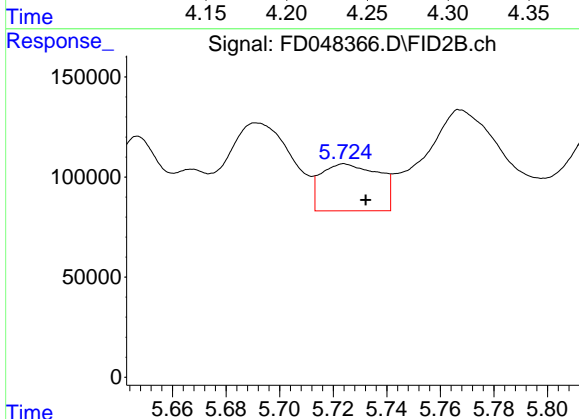




#1 1,2,3-Trimethylbenzene (C10.1)

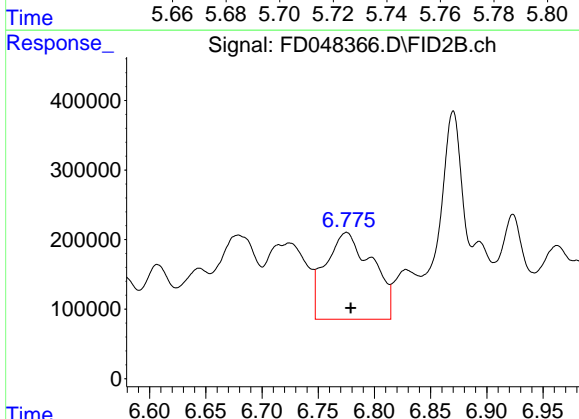
R.T.: 4.236 min  
 Delta R.T.: 0.024 min  
 Response: 45966  
 Conc: 0.26 ug/ml

Instrument :  
 FID\_D  
 ClientSampleId :



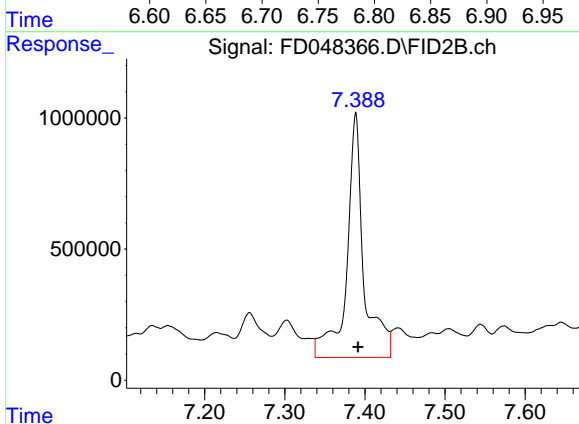
#2 Naphthalene (C11.7)

R.T.: 5.724 min  
 Delta R.T.: -0.008 min  
 Response: 349904  
 Conc: 1.93 ug/ml



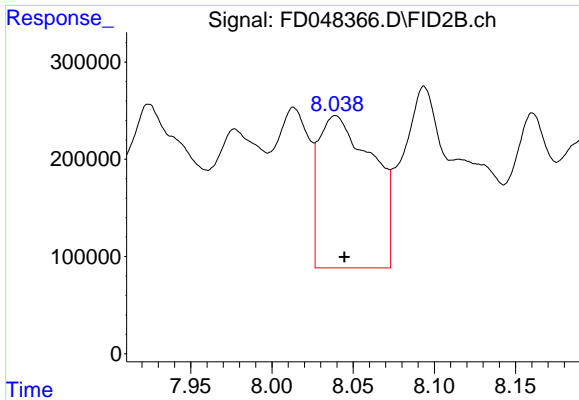
#3 2-Methylnaphthalene (C12.89)

R.T.: 6.775 min  
 Delta R.T.: -0.004 min  
 Response: 3605925  
 Conc: 20.16 ug/ml



#4 2-Bromonaphthalene (SURR)

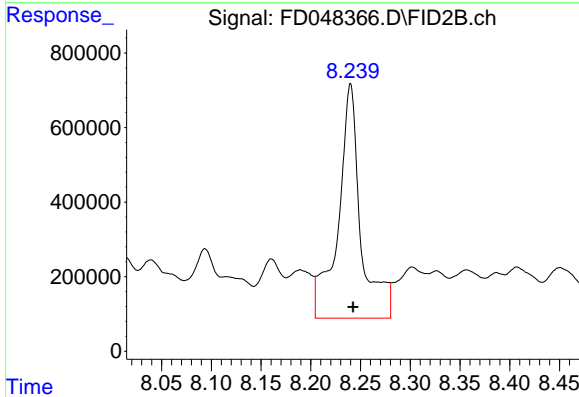
R.T.: 7.388 min  
 Delta R.T.: -0.003 min  
 Response: 13772173  
 Conc: 90.81 ug/ml



#5 Acenaphthylene (C15.06)

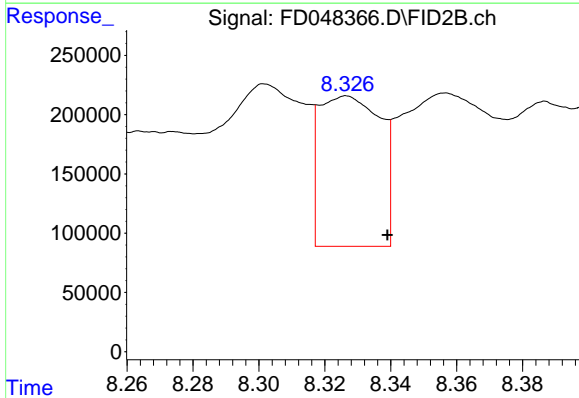
R.T.: 8.039 min  
 Delta R.T.: -0.006 min  
 Response: 3614308  
 Conc: 20.69 ug/ml

Instrument :  
 FID\_D  
 ClientSampleId :



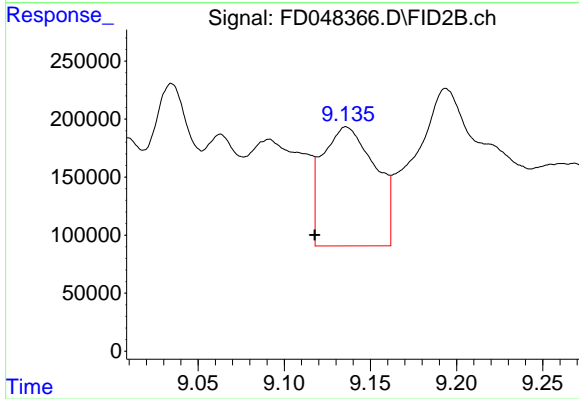
#6 2-Fluorobiphenyl (SURRE)

R.T.: 8.240 min  
 Delta R.T.: -0.003 min  
 Response: 9908456  
 Conc: 103.70 ug/ml



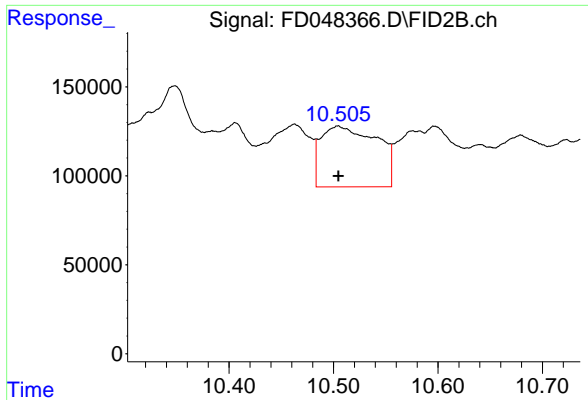
#7 Acenaphthene (C15.5)

R.T.: 8.326 min  
 Delta R.T.: -0.013 min  
 Response: 1634205  
 Conc: 9.19 ug/ml



#8 Fluorene (C16.55)

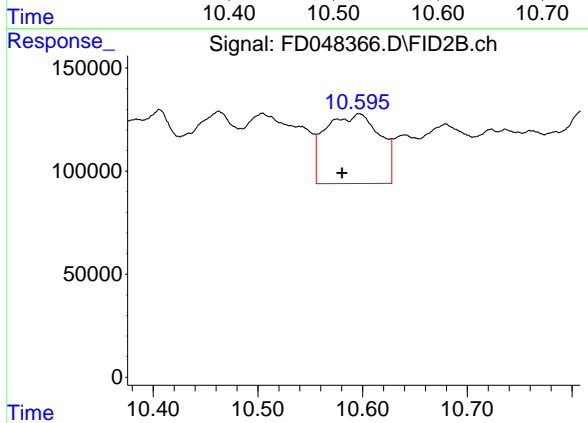
R.T.: 9.136 min  
 Delta R.T.: 0.018 min  
 Response: 2185795  
 Conc: 13.05 ug/ml



#9 Phenanthrene (C19.36)

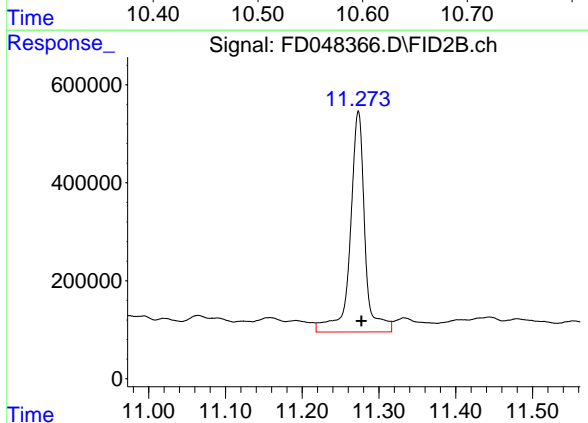
R.T.: 10.504 min  
 Delta R.T.: 0.000 min  
 Response: 1274659  
 Conc: 7.90 ug/ml

Instrument :  
 FID\_D  
 ClientSampleId :



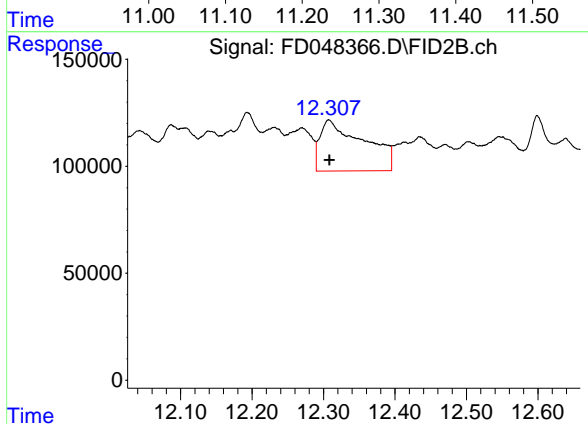
#10 Anthracene (C19.43)

R.T.: 10.597 min  
 Delta R.T.: 0.017 min  
 Response: 1223691  
 Conc: 7.69 ug/ml



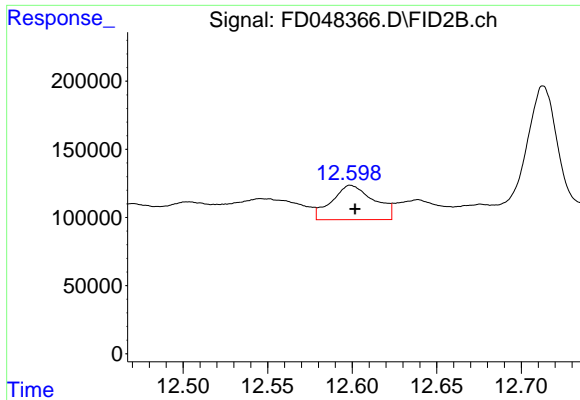
#11 ortho-Terphenyl (SURR)

R.T.: 11.273 min  
 Delta R.T.: -0.004 min  
 Response: 5974643  
 Conc: 34.82 ug/ml



#12 Fluoranthene (C21.85)

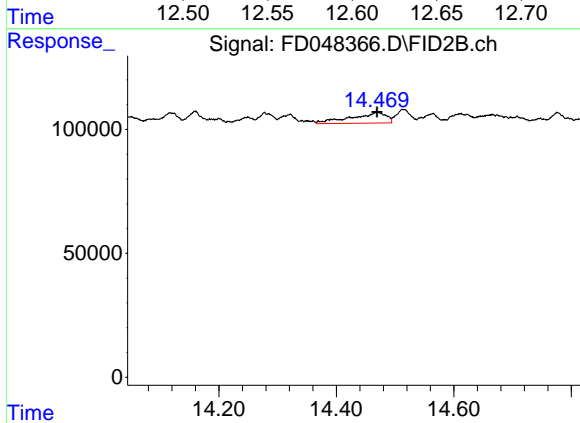
R.T.: 12.308 min  
 Delta R.T.: 0.000 min  
 Response: 1013013  
 Conc: 6.25 ug/ml



#13 Pyrene (C20.8)

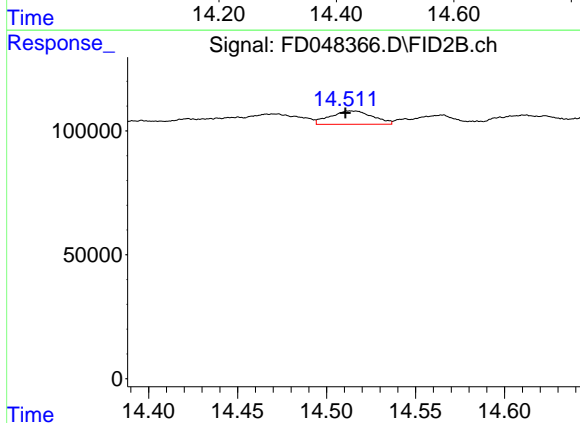
R.T.: 12.600 min  
 Delta R.T.: -0.002 min  
 Response: 438100  
 Conc: 2.73 ug/ml

Instrument :  
 FID\_D  
 ClientSampleId :



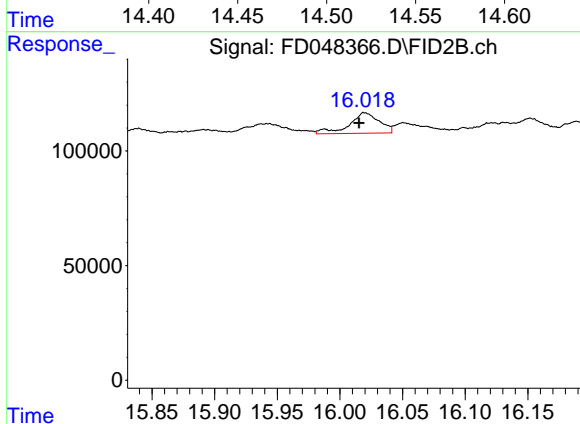
#14 Benzo[a]anthracene (C26.37)

R.T.: 14.470 min  
 Delta R.T.: 0.000 min  
 Response: 178909  
 Conc: 1.28 ug/ml



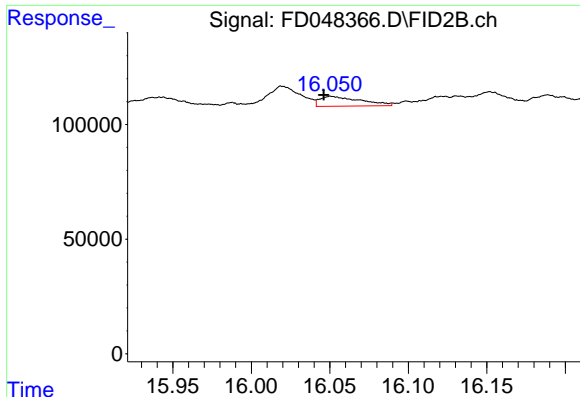
#15 Chrysene (C27.41)

R.T.: 14.514 min  
 Delta R.T.: 0.004 min  
 Response: 89269  
 Conc: 0.54 ug/ml



#16 benzo[b]fluoranthene (C30.41)

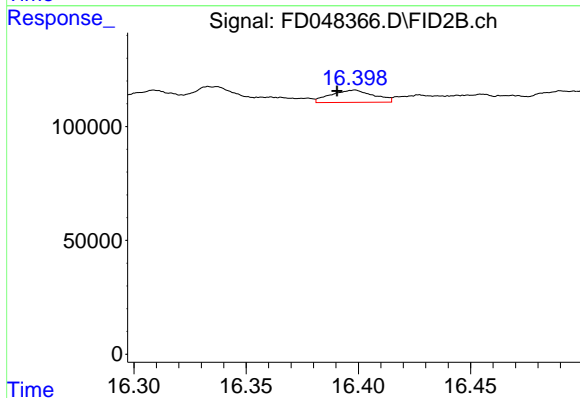
R.T.: 16.020 min  
 Delta R.T.: 0.005 min  
 Response: 149774  
 Conc: 1.01 ug/ml



#17 Bnezo[k]fluoranthene (C30.14)

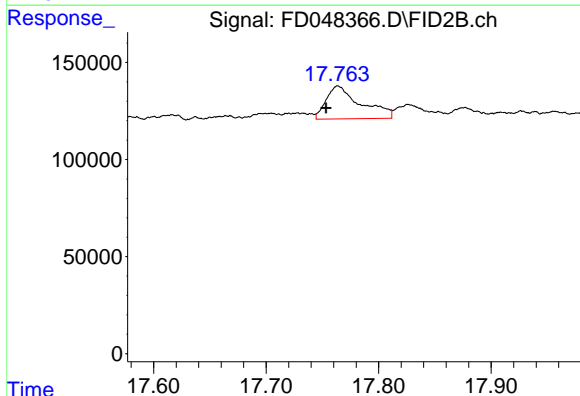
R.T.: 16.052 min  
 Delta R.T.: 0.005 min  
 Response: 76820  
 Conc: 0.50 ug/ml

Instrument :  
 FID\_D  
 ClientSampleId :



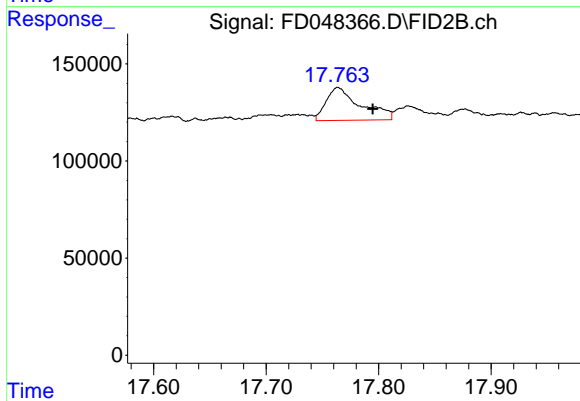
#18 Benzo[a]pyrene (C31.34)

R.T.: 16.398 min  
 Delta R.T.: 0.007 min  
 Response: 71967  
 Conc: 0.49 ug/ml



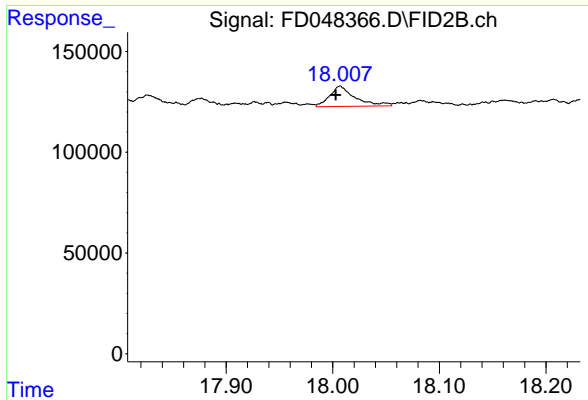
#19 Indeno[1,2,3-cd]pyrene (C35.01)

R.T.: 17.764 min  
 Delta R.T.: 0.011 min  
 Response: 361482  
 Conc: 3.20 ug/ml



#20 Dibenz[a,h]anthracene (C30.36)

R.T.: 17.764 min  
 Delta R.T.: -0.030 min  
 Response: 361482  
 Conc: 2.37 ug/ml



#21 Benzo[g,h,i]perylene (C34.01)

R.T.: 18.007 min  
Delta R.T.: 0.004 min  
Response: 166981  
Conc: 1.13 ug/ml

Instrument :  
FID\_D  
ClientSampleId :