

Data Path : Z:\pestpcbsrv\HPCHEM1\FID_D\Data\FD092120AL\
 Data File : FD034787.D
 Signal(s) : FID2B.CH
 Acq On : 21 Sep 2020 15:11
 Operator : DD\AJ
 Sample : L4068-03
 Misc :
 ALS Vial : 59 Sample Multiplier: 1

Integration File: autoint1.e
 Quant Time: Sep 22 02:46:34 2020
 Quant Method : Z:\pestpcbsrv\HPCHEM1\FID_D\methods\Alaphatic EPH 083120.M
 Quant Title : GC Extractables
 QLast Update : Tue Sep 01 01:55:21 2020
 Response via : Initial Calibration
 Integrator: ChemStation 6890 Scale Mode: Large solvent peaks clipped

Volume Inj. : 1 ul
 Signal Phase : Rxi-1ms
 Signal Info : 20M x 0.18mm x 0.18um

Compound	R.T.	Response	Conc Units

System Monitoring Compounds			
12) S 1-chlorooctadecane (S...	13.021	3707913	37.857 ug/ml
Spiked Amount	50.000	Recovery	= 75.71%

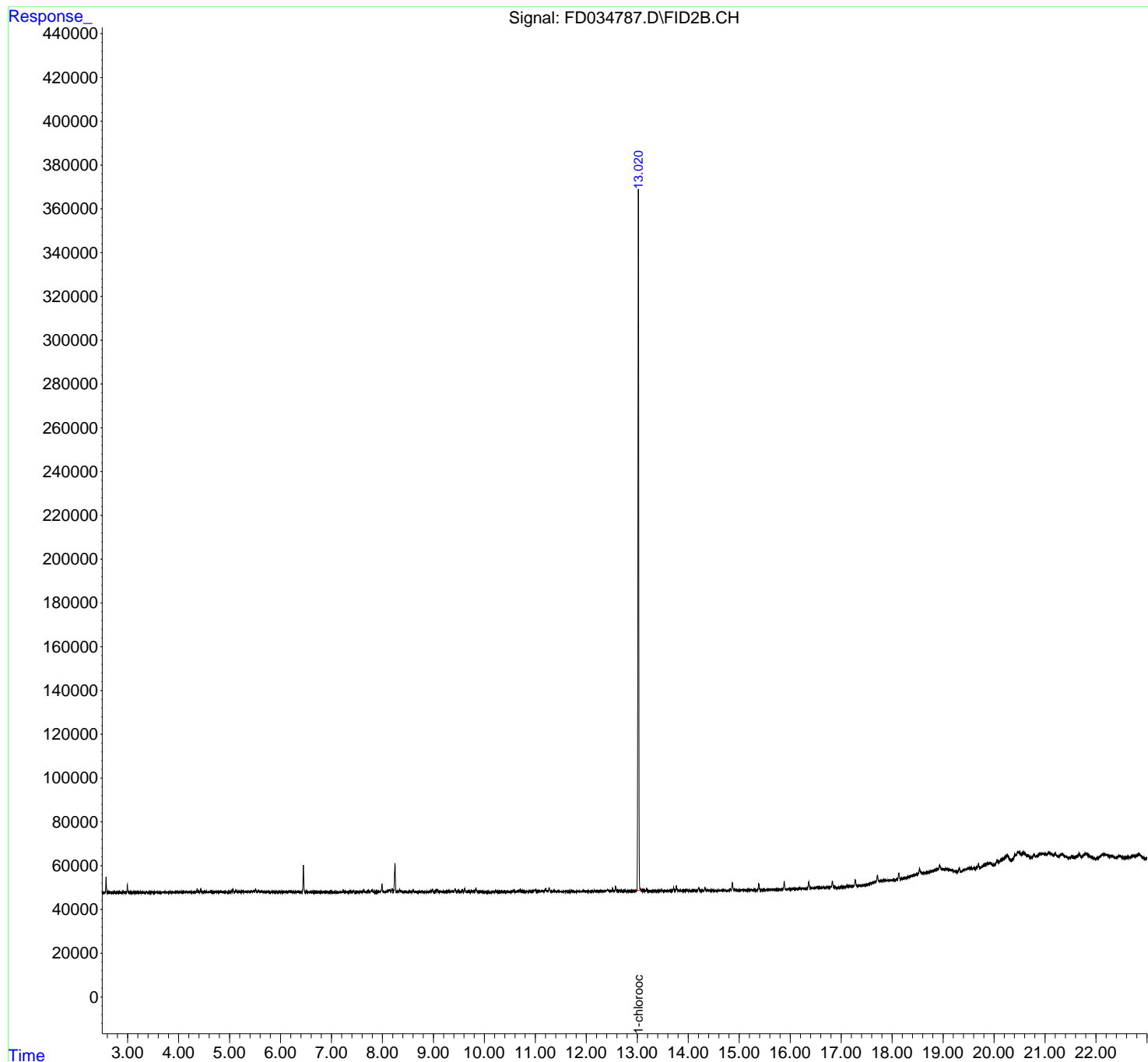
Target Compounds

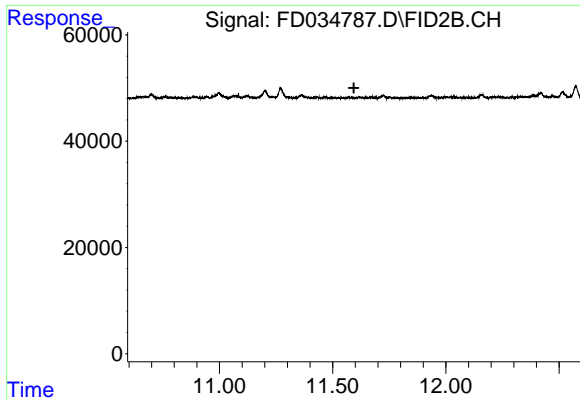
(f)=RT Delta > 1/2 Window (m)=manual int.

Data Path : Z:\pestpcbsrv\HPCHEM1\FID_D\Data\FD092120AL\
Data File : FD034787.D
Signal(s) : FID2B.CH
Acq On : 21 Sep 2020 15:11
Operator : DD\AJ
Sample : L4068-03
Misc :
ALS Vial : 59 Sample Multiplier: 1

Integration File: autoint1.e
Quant Time: Sep 22 02:46:34 2020
Quant Method : Z:\pestpcbsrv\HPCHEM1\FID_D\methods\Alaphatic EPH 083120.M
Quant Title : GC Extractables
QLast Update : Tue Sep 01 01:55:21 2020
Response via : Initial Calibration
Integrator: ChemStation 6890 Scale Mode: Large solvent peaks clipped

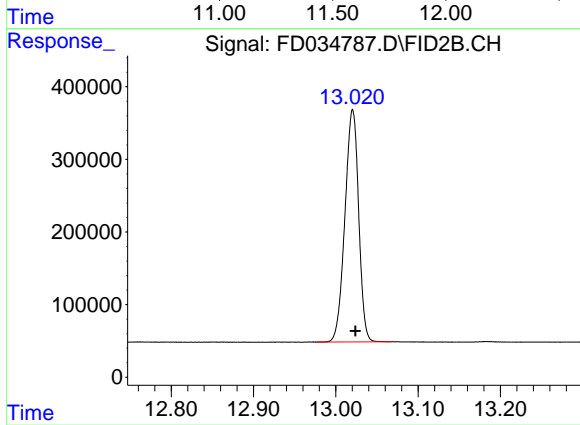
Volume Inj. : 1 ul
Signal Phase : Rxi-1ms
Signal Info : 20M x 0.18mm x 0.18um





#9 ortho-Terphenyl (SURR)

R.T.: 0.000 min
Exp R.T.: 11.594 min
Response: 0
Conc: N.D.



#12 1-chlorooctadecane (SURR)

R.T.: 13.021 min
Delta R.T.: -0.003 min
Response: 3707913
Conc: 37.86 ug/ml