

Data Path : Z:\pestpcbsrv\HPCHEM1\FID_D\Data\FD092121AL\
Data File : FD038854.D
Signal(s) : FID2B.CH
Acq On : 21 Sep 2021 20:46
Operator : AJ\MA
Sample : I.BLK
Misc :
ALS Vial : 51 Sample Multiplier: 1

Integration File: autoint1.e
Quant Time: Sep 22 02:07:48 2021
Quant Method : Z:\pestpcbsrv\HPCHEM1\FID_D\methods\Aliphatic EPH 083021.M
Quant Title : GC Extractables
QLast Update : Tue Aug 31 06:05:30 2021
Response via : Initial Calibration
Integrator: ChemStation 6890 Scale Mode: Large solvent peaks clipped

Volume Inj. : 1 ul
Signal Phase : Rxi-1ms
Signal Info : 20M x 0.18mm x 0.18um

Compound	R.T.	Response	Conc Units

System Monitoring Compounds			
Target Compounds			

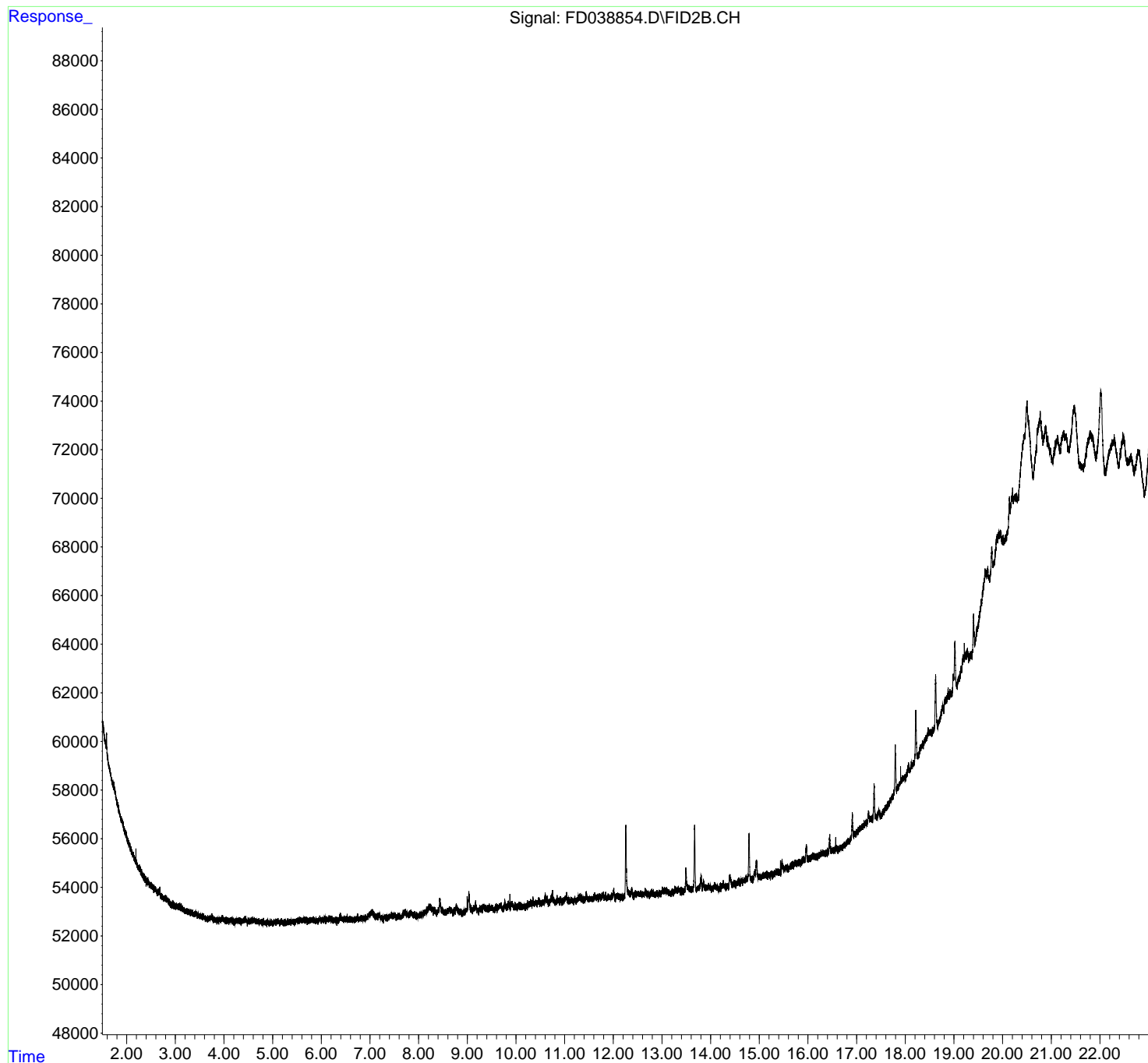
(f)=RT Delta > 1/2 Window

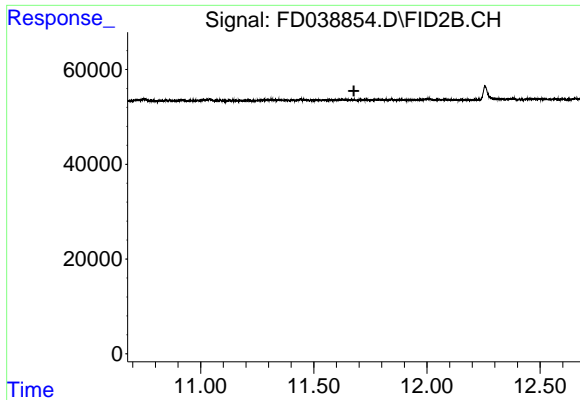
(m)=manual int.

Data Path : Z:\pestpcbsrv\HPCHEM1\FID_D\Data\FD092121AL\
Data File : FD038854.D
Signal(s) : FID2B.CH
Acq On : 21 Sep 2021 20:46
Operator : AJ\MA
Sample : I.BLK
Misc :
ALS Vial : 51 Sample Multiplier: 1

Integration File: autoint1.e
Quant Time: Sep 22 02:07:48 2021
Quant Method : Z:\pestpcbsrv\HPCHEM1\FID_D\methods\Aliphatic EPH 083021.M
Quant Title : GC Extractables
QLast Update : Tue Aug 31 06:05:30 2021
Response via : Initial Calibration
Integrator: ChemStation 6890 Scale Mode: Large solvent peaks clipped

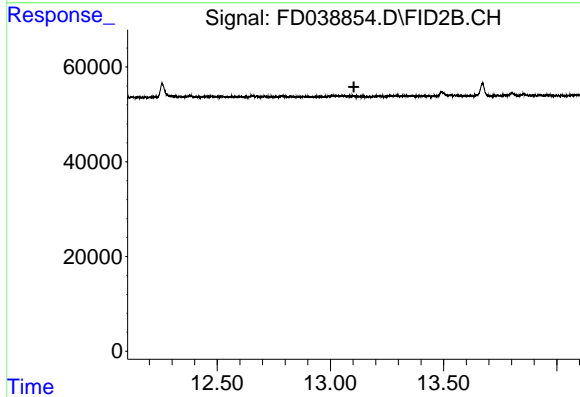
Volume Inj. : 1 ul
Signal Phase : Rxi-1ms
Signal Info : 20M x 0.18mm x 0.18um





#9 ortho-Terphenyl (SURR)

R.T.: 0.000 min
Exp R.T. : 11.677 min
Response: 0
Conc: N.D.



#12 1-chlorooctadecane (SURR)

R.T.: 0.000 min
Exp R.T. : 13.104 min
Response: 0
Conc: N.D.