

Data Path : Z:\pestpcbsrv\HPCHEM1\FID_D\Data\FD092518AL\
 Data File : FD025698.D
 Signal(s) : FID2B.CH
 Acq On : 25 Sep 2018 10:38
 Operator : AJ\SJ
 Sample : PB113136BL
 Misc :
 ALS Vial : 53 Sample Multiplier: 1

Integration File: autoint1.e
 Quant Time: Sep 25 15:50:06 2018
 Quant Method : Z:\pestpcbsrv\HPCHEM1\FID_D\methods\Alaphatic EPH 091718.M
 Quant Title : GC Extractables
 QLast Update : Tue Sep 18 07:25:24 2018
 Response via : Initial Calibration
 Integrator: ChemStation 6890 Scale Mode: Large solvent peaks clipped

Volume Inj. : 1 ul
 Signal Phase : Rxi-lms
 Signal Info : 20M x 0.18mm x 0.18um

Compound	R.T.	Response	Conc Units

System Monitoring Compounds			
9) S ortho-Terphenyl (SURR)	11.325	3320830	39.575 ug/ml
Spiked Amount	50.000	Recovery	= 79.15%
12) S 1-chlorooctadecane (S...	12.766	2308675	37.813 ug/ml
Spiked Amount	50.000	Recovery	= 75.63%

Target Compounds

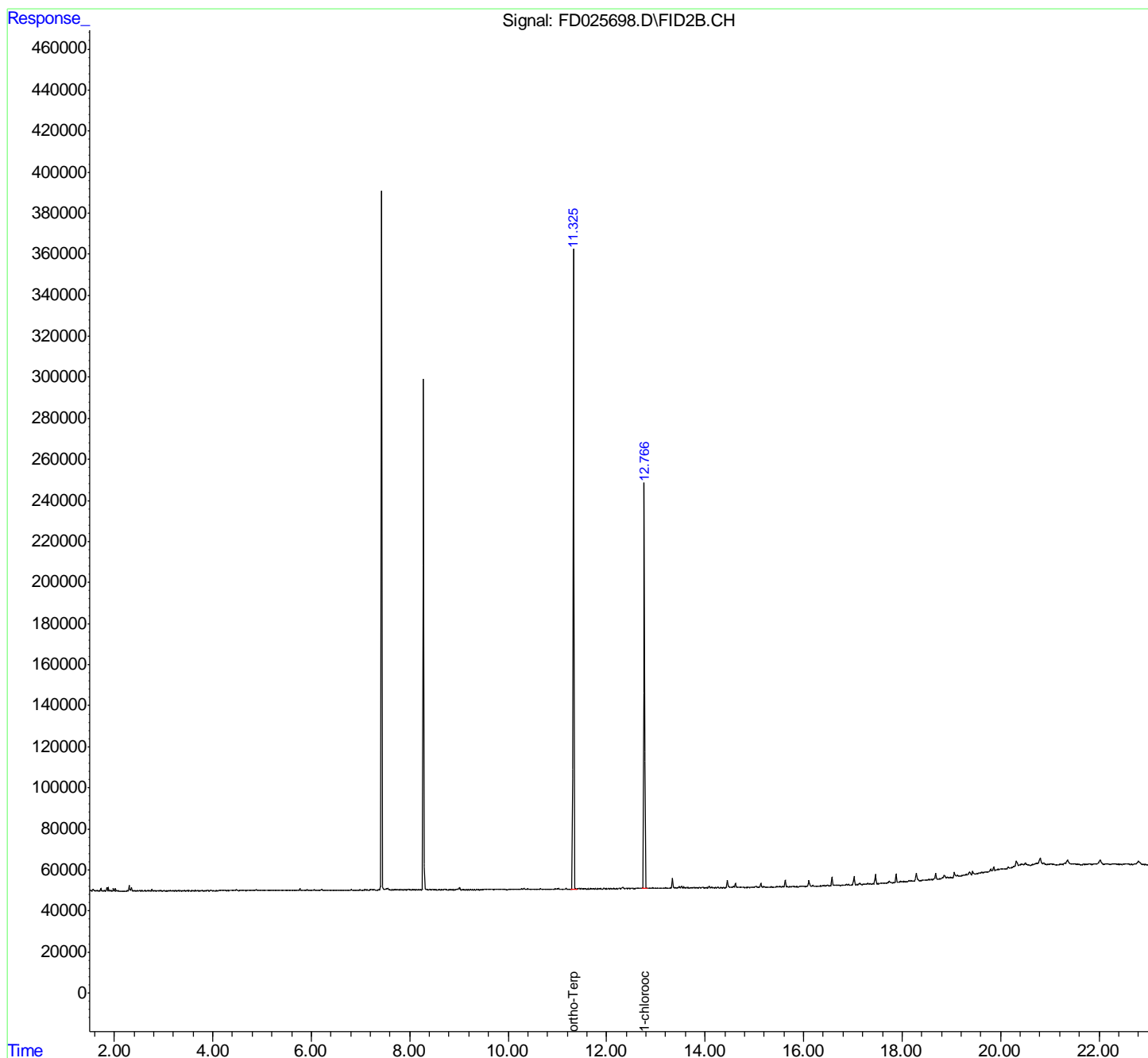
(f)=RT Delta > 1/2 Window

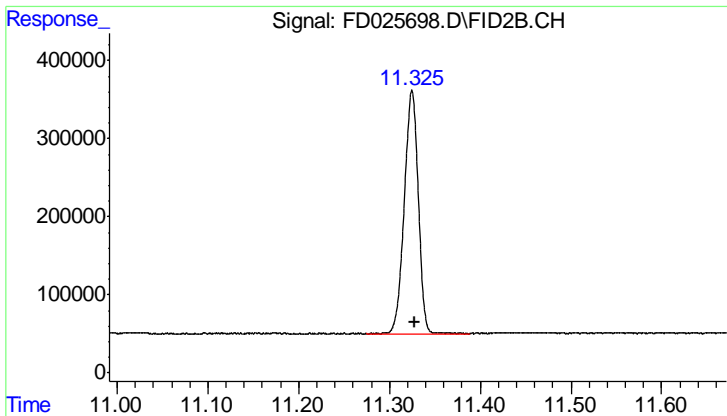
(m)=manual int.

Data Path : Z:\pestpcbsrv\HPCHEM1\FID_D\Data\FD092518AL\
 Data File : FD025698.D
 Signal(s) : FID2B.CH
 Acq On : 25 Sep 2018 10:38
 Operator : AJ\SJ
 Sample : PB113136BL
 Misc :
 ALS Vial : 53 Sample Multiplier: 1

Integration File: autoint1.e
 Quant Time: Sep 25 15:50:06 2018
 Quant Method : Z:\pestpcbsrv\HPCHEM1\FID_D\methods\Alaphatic EPH 091718.M
 Quant Title : GC Extractables
 QLast Update : Tue Sep 18 07:25:24 2018
 Response via : Initial Calibration
 Integrator: ChemStation 6890 Scale Mode: Large solvent peaks clipped

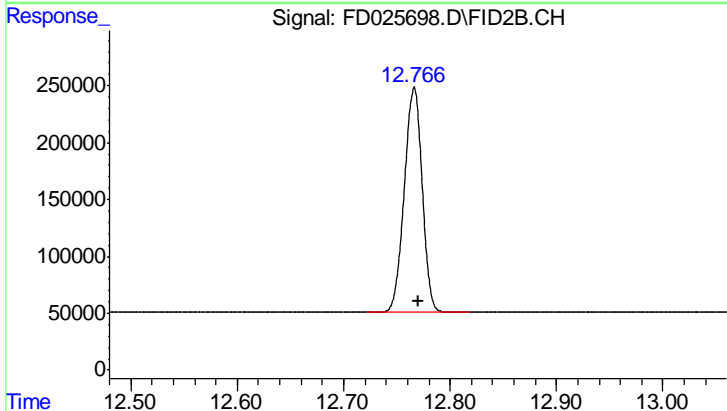
Volume Inj. : 1 ul
 Signal Phase : Rxi-lms
 Signal Info : 20M x 0.18mm x 0.18um





#9 ortho-Terphenyl (SURR)

R.T.: 11.325 min
Delta R.T.: -0.003 min
Response: 3320830
Conc: 39.58 ug/ml



#12 1-chlorooctadecane (SURR)

R.T.: 12.766 min
Delta R.T.: -0.004 min
Response: 2308675
Conc: 37.81 ug/ml