

Data Path : Z:\pestpcbsrv\HPCHEM1\FID_D\Data\FD092520AR\
Data File : FD034882.D
Signal(s) : FID2B.CH
Acq On : 25 Sep 2020 7:59
Operator : DD\AJ
Sample : MECL2
Misc :
ALS Vial : 51 Sample Multiplier: 1

Integration File: autoint1.e
Quant Time: Sep 26 01:03:16 2020
Quant Method : Z:\pestpcbsrv\HPCHEM1\FID_D\methods\Aromatic EPH 083120.M
Quant Title : GC Extractables
QLast Update : Tue Sep 01 02:30:57 2020
Response via : Initial Calibration
Integrator: ChemStation 6890 Scale Mode: Large solvent peaks clipped

Volume Inj. : 1 µl
Signal Phase : Rxi-1ms
Signal Info : 20M x 0.18mm x 0.18µm

Compound	R.T.	Response	Conc Units

System Monitoring Compounds			
Target Compounds			

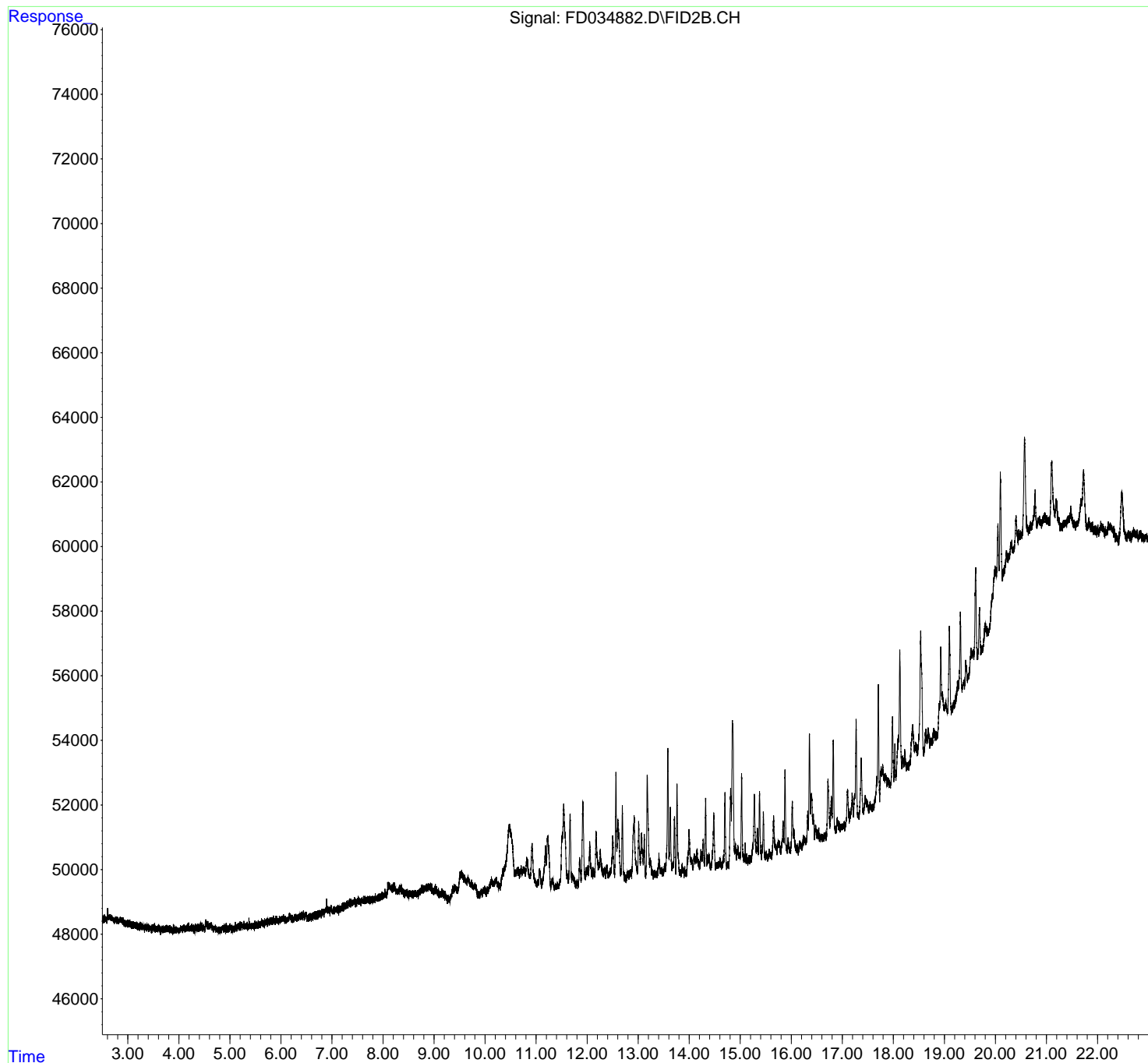
(f)=RT Delta > 1/2 Window

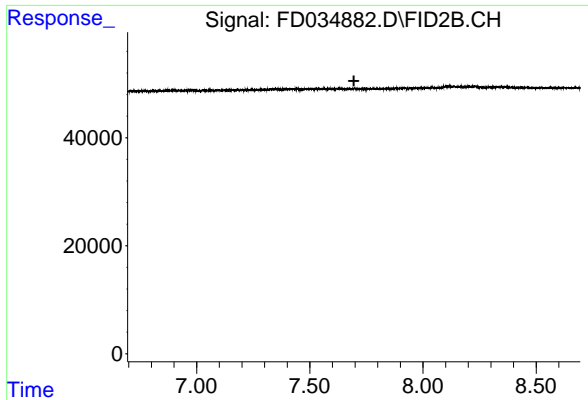
(m)=manual int.

Data Path : Z:\pestpcbsrv\HPCHEM1\FID_D\Data\FD092520AR\
Data File : FD034882.D
Signal(s) : FID2B.CH
Acq On : 25 Sep 2020 7:59
Operator : DD\AJ
Sample : MECL2
Misc :
ALS Vial : 51 Sample Multiplier: 1

Integration File: autoint1.e
Quant Time: Sep 26 01:03:16 2020
Quant Method : Z:\pestpcbsrv\HPCHEM1\FID_D\methods\Aromatic EPH 083120.M
Quant Title : GC Extractables
QLast Update : Tue Sep 01 02:30:57 2020
Response via : Initial Calibration
Integrator: ChemStation 6890 Scale Mode: Large solvent peaks clipped

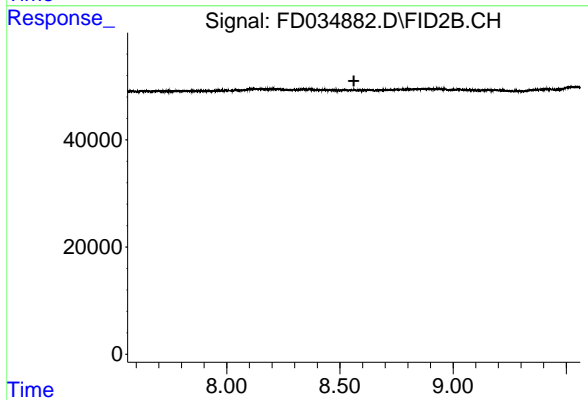
Volume Inj. : 1 μ l
Signal Phase : Rxi-1ms
Signal Info : 20M x 0.18mm x 0.18 μ m





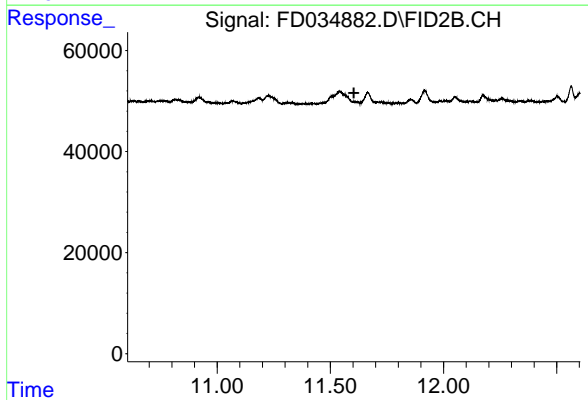
#4 2-Bromonaphthalene (SURR)

R.T.: 0.000 min
Exp R.T. : 7.695 min
Response: 0
Conc: N.D.



#6 2-Fluorobiphenyl (SURR)

R.T.: 0.000 min
Exp R.T. : 8.562 min
Response: 0
Conc: N.D.



#11 ortho-Terphenyl (SURR)

R.T.: 0.000 min
Exp R.T. : 11.604 min
Response: 0
Conc: N.D.