

Data Path : Z:\pestpcbsrv\HPCHEM1\FID\_D\Data\FD092718AL\  
Data File : FD025788.D  
Signal(s) : FID2B.CH  
Acq On : 28 Sep 2018 8:15  
Operator : AJ\SJ  
Sample : I.BLK  
Misc :  
ALS Vial : 51 Sample Multiplier: 1

Instrument :  
FID\_D  
ClientSampleId :

Integration File: autoint1.e  
Quant Time: Sep 28 09:38:42 2018  
Quant Method : Z:\pestpcbsrv\HPCHEM1\FID\_D\methods\Alaphatic EPH 091718.M  
Quant Title : GC Extractables  
QLast Update : Tue Sep 18 07:25:24 2018  
Response via : Initial Calibration  
Integrator: ChemStation 6890 Scale Mode: Large solvent peaks clipped

Volume Inj. : 1 ul  
Signal Phase : Rxi-1ms  
Signal Info : 20M x 0.18mm x 0.18um

Compound	R.T.	Response	Conc Units
----------	------	----------	------------

-----  
System Monitoring Compounds

Target Compounds  
-----

(f)=RT Delta > 1/2 Window

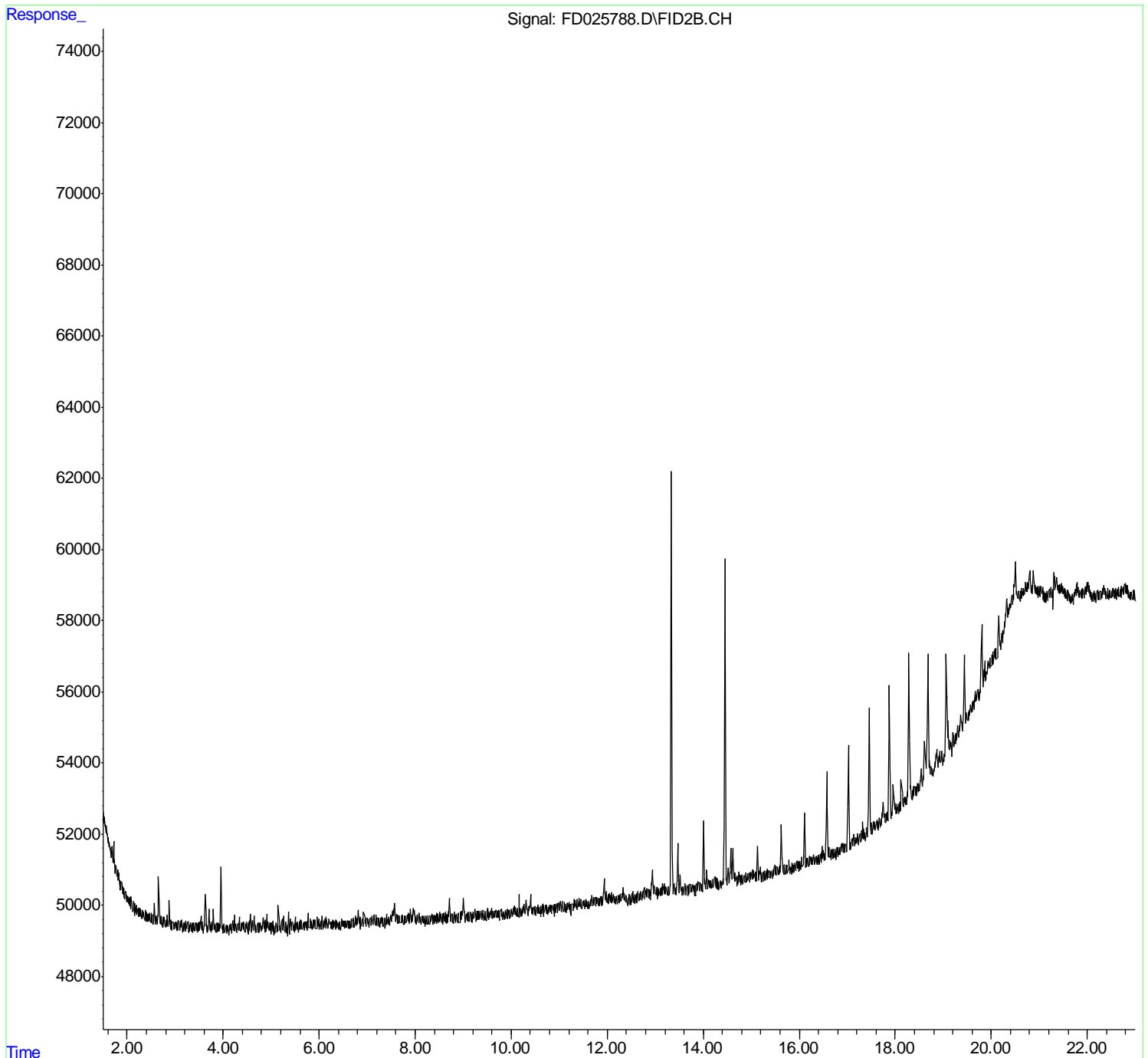
(m)=manual int.

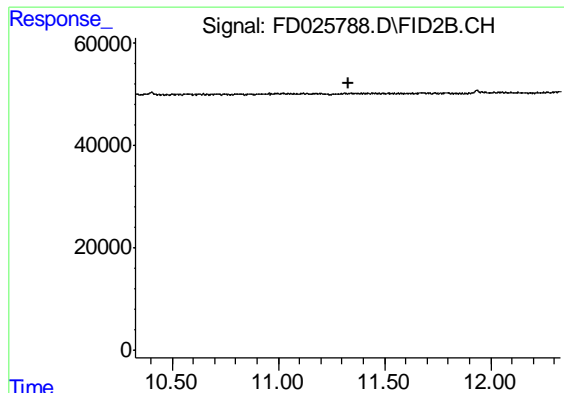
Data Path : Z:\pestpcbsrv\HPCHEM1\FID\_D\Data\FD092718AL\  
 Data File : FD025788.D  
 Signal(s) : FID2B.CH  
 Acq On : 28 Sep 2018 8:15  
 Operator : AJ\SJ  
 Sample : I.BLK  
 Misc :  
 ALS Vial : 51 Sample Multiplier: 1

Instrument :  
 FID\_D  
 ClientSampleId :

Integration File: autoint1.e  
 Quant Time: Sep 28 09:38:42 2018  
 Quant Method : Z:\pestpcbsrv\HPCHEM1\FID\_D\methods\Alaphatic EPH 091718.M  
 Quant Title : GC Extractables  
 QLast Update : Tue Sep 18 07:25:24 2018  
 Response via : Initial Calibration  
 Integrator: ChemStation 6890 Scale Mode: Large solvent peaks clipped

Volume Inj. : 1 ul  
 Signal Phase : Rxi-1ms  
 Signal Info : 20M x 0.18mm x 0.18um

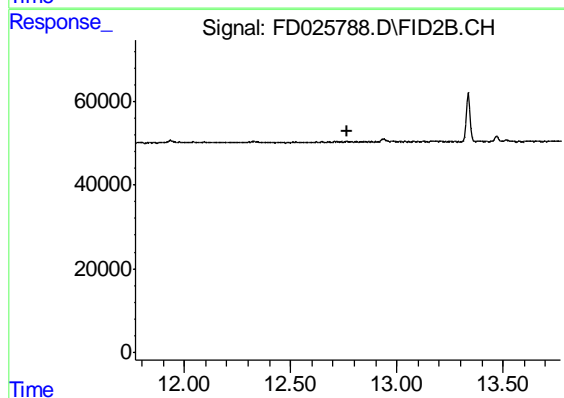




#9 ortho-Terphenyl (SURR)

R.T.: 0.000 min  
Exp R.T. : 11.328 min  
Response: 0  
Conc: N.D.

Instrument :  
FID\_D  
ClientSampleId :



#12 1-chlorooctadecane (SURR)

R.T.: 0.000 min  
Exp R.T. : 12.770 min  
Response: 0  
Conc: N.D.