

Data Path : Z:\pestpcbsrv\HPCHEM1\FID_D\Data\FD100223AR\
 Data File : FD046613.D
 Signal(s) : FID2B.ch
 Acq On : 02 Oct 2023 22:33
 Operator : YP/AJ
 Sample : PB156016BL
 Misc :
 ALS Vial : 62 Sample Multiplier: 1

Instrument :
 FID_D
 ClientSampleId :
 PB156016BL

Integration File: autoint1.e
 Quant Time: Oct 03 00:38:30 2023
 Quant Method : Z:\pestpcbsrv\HPCHEM1\FID_D\methods\Aromatic EPH 091523.M
 Quant Title : GC Extractables
 QLast Update : Fri Sep 15 01:47:22 2023
 Response via : Initial Calibration
 Integrator: ChemStation

Volume Inj. : 1 µl
 Signal Phase : Rxi-1ms
 Signal Info : 20M x 0.18mm x 0.18µm

Compound	R.T.	Response	Conc Units

System Monitoring Compounds			
4) S 2-Bromonaphthalene (S...	7.492	9585357	54.392 ug/ml
Spiked Amount 50.000		Recovery =	108.78%
6) S 2-Fluorobiphenyl (SURR)	8.345	6178471	53.327 ug/ml
Spiked Amount 50.000 Range 0 - 131		Recovery =	106.65%
11) S ortho-Terphenyl (SURR)	11.387	14446196	70.909 ug/ml
Spiked Amount 50.000		Recovery =	141.82%

Target Compounds

(f)=RT Delta > 1/2 Window

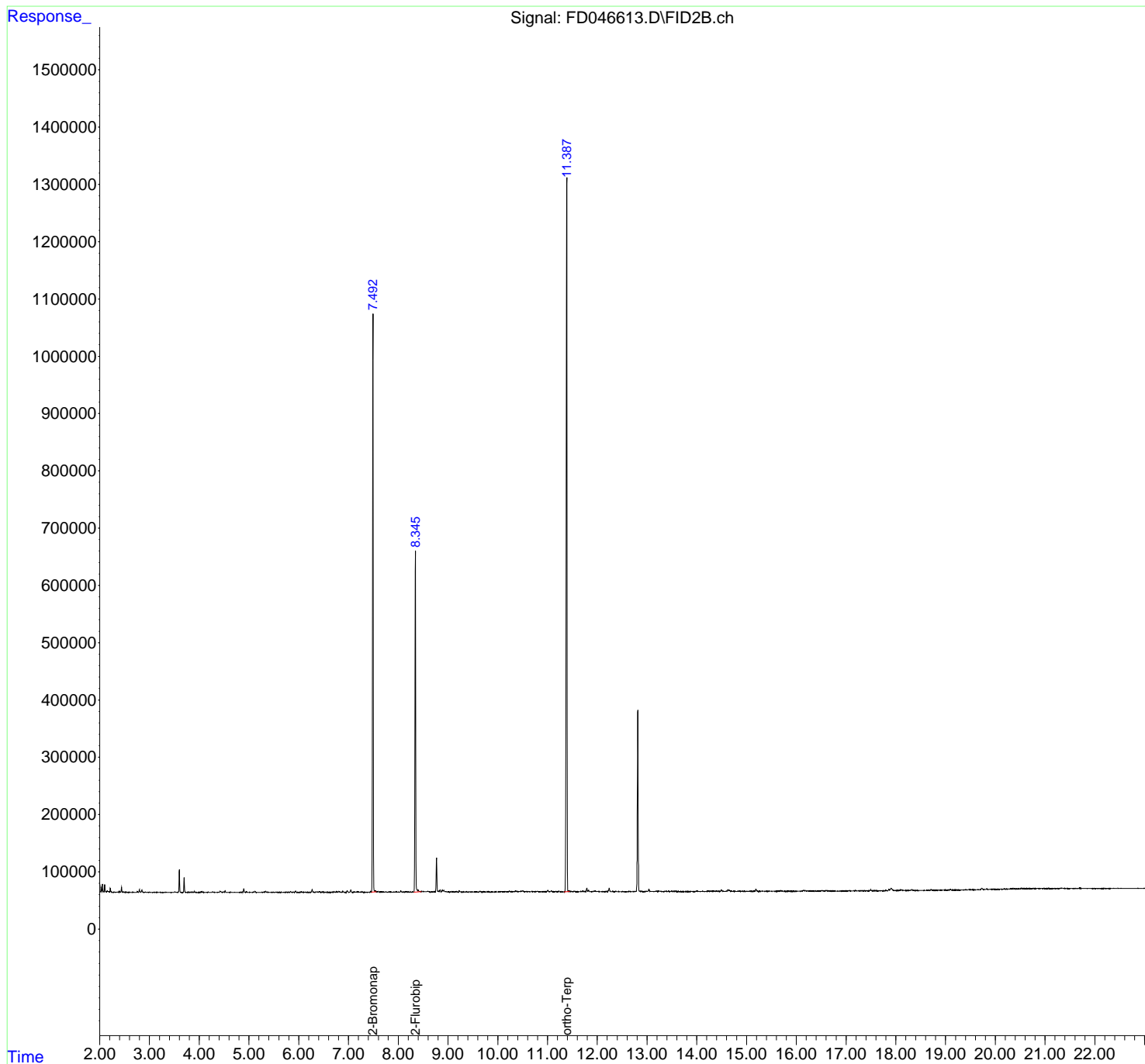
(m)=manual int.

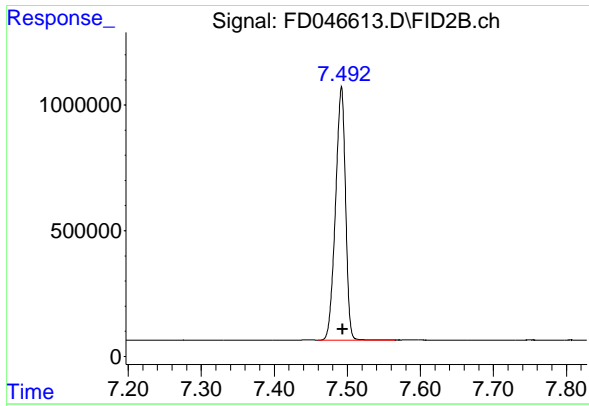
Data Path : Z:\pestpcbsrv\HPCHEM1\FID_D\Data\FD100223AR\
 Data File : FD046613.D
 Signal(s) : FID2B.ch
 Acq On : 02 Oct 2023 22:33
 Operator : YP/AJ
 Sample : PB156016BL
 Misc :
 ALS Vial : 62 Sample Multiplier: 1

Instrument :
 FID_D
ClientSampleId :
 PB156016BL

Integration File: autoint1.e
 Quant Time: Oct 03 00:38:30 2023
 Quant Method : Z:\pestpcbsrv\HPCHEM1\FID_D\methods\Aromatic EPH 091523.M
 Quant Title : GC Extractables
 QLast Update : Fri Sep 15 01:47:22 2023
 Response via : Initial Calibration
 Integrator: ChemStation

Volume Inj. : 1 µl
 Signal Phase : Rxi-1ms
 Signal Info : 20M x 0.18mm x 0.18µm

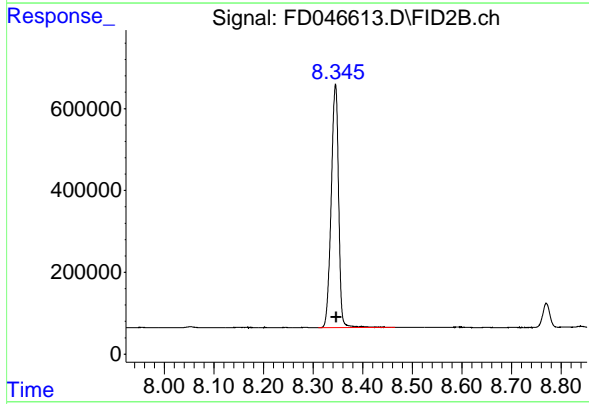




#4 2-Bromonaphthalene (SURR)

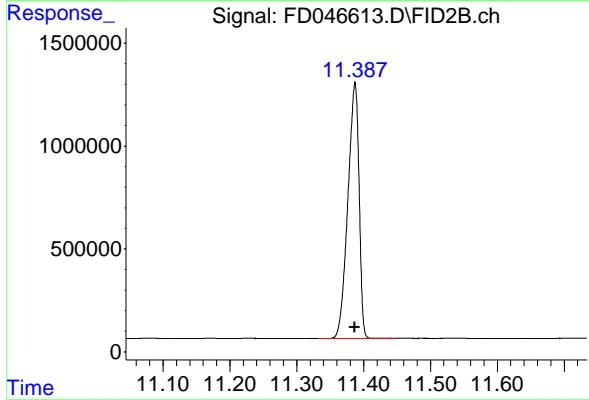
R.T.: 7.492 min
 Delta R.T.: -0.002 min
 Response: 9585357
 Conc: 54.39 ug/ml

Instrument :
 FID_D
 ClientSampleId :
 PB156016BL



#6 2-Fluorobiphenyl (SURR)

R.T.: 8.345 min
 Delta R.T.: -0.002 min
 Response: 6178471
 Conc: 53.33 ug/ml



#11 ortho-Terphenyl (SURR)

R.T.: 11.387 min
 Delta R.T.: 0.000 min
 Response: 14446196
 Conc: 70.91 ug/ml