

Data Path : Z:\pestpcbsrv\HPCHEM1\FID_D\Data\FD100418AL\
 Data File : FD025833.D
 Signal(s) : FID2B.CH
 Acq On : 04 Oct 2018 12:47
 Operator : AJ\SJ
 Sample : I.BLK
 Misc :
 ALS Vial : 51 Sample Multiplier: 1

Integration File: autoint1.e
 Quant Time: Oct 04 16:55:36 2018
 Quant Method : Z:\pestpcbsrv\HPCHEM1\FID_D\methods\Alaphatic EPH 091718.M
 Quant Title : GC Extractables
 QLast Update : Tue Sep 18 07:25:24 2018
 Response via : Initial Calibration
 Integrator: ChemStation 6890 Scale Mode: Large solvent peaks clipped

Volume Inj. : 1 ul
 Signal Phase : Rxi-1ms
 Signal Info : 20M x 0.18mm x 0.18um

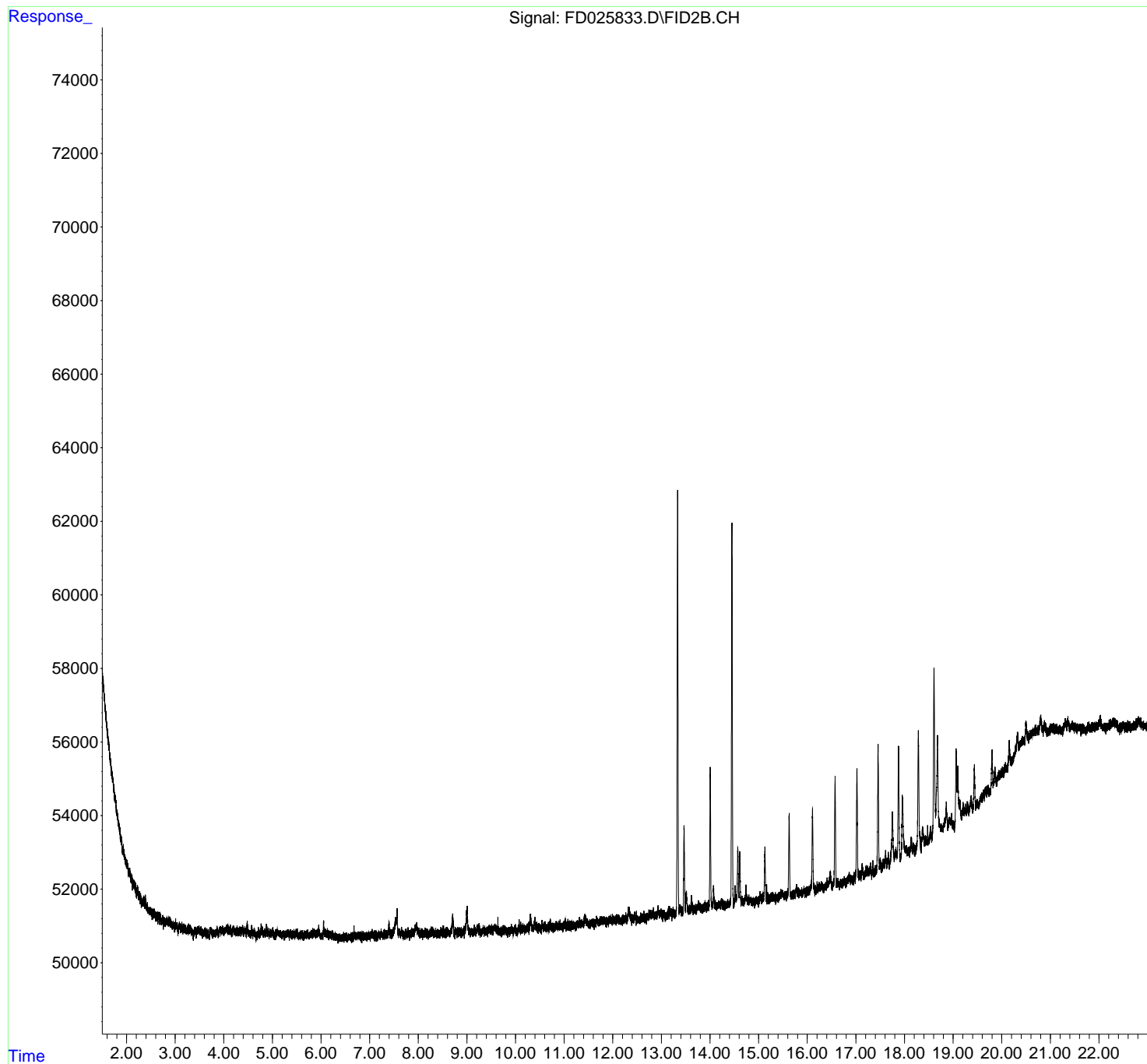
| Compound | R.T. | Response | Conc Units |
|-----------------------------|------|----------|------------|
| ----- | | | |
| System Monitoring Compounds | | | |
| Target Compounds | | | |
| ----- | | | |

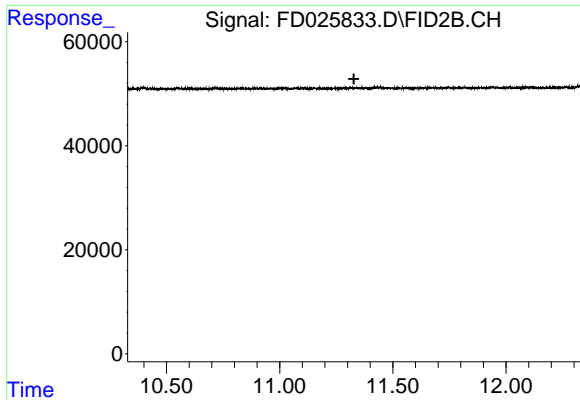
(f)=RT Delta > 1/2 Window (m)=manual int.

Data Path : Z:\pestpcbsrv\HPCHEM1\FID_D\Data\FD100418AL\
Data File : FD025833.D
Signal(s) : FID2B.CH
Acq On : 04 Oct 2018 12:47
Operator : AJ\SJ
Sample : I.BLK
Misc :
ALS Vial : 51 Sample Multiplier: 1

Integration File: autoint1.e
Quant Time: Oct 04 16:55:36 2018
Quant Method : Z:\pestpcbsrv\HPCHEM1\FID_D\methods\Alaphatic EPH 091718.M
Quant Title : GC Extractables
QLast Update : Tue Sep 18 07:25:24 2018
Response via : Initial Calibration
Integrator: ChemStation 6890 Scale Mode: Large solvent peaks clipped

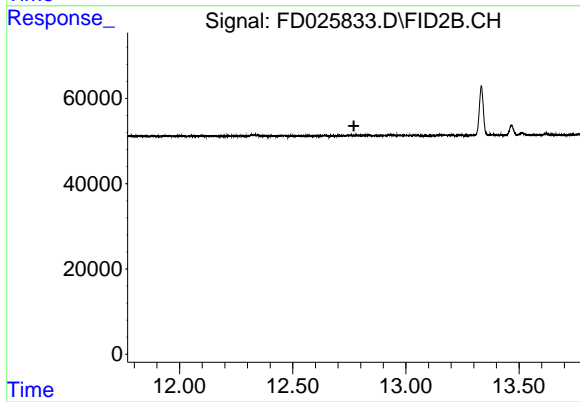
Volume Inj. : 1 ul
Signal Phase : Rxi-1ms
Signal Info : 20M x 0.18mm x 0.18um





#9 ortho-Terphenyl (SURR)

R.T.: 0.000 min
Exp R.T. : 11.328 min
Response: 0
Conc: N.D.



#12 1-chlorooctadecane (SURR)

R.T.: 0.000 min
Exp R.T. : 12.770 min
Response: 0
Conc: N.D.