

Data Path : Z:\pestpcbsrv\HPCHEM1\FID\_D\Data\FD100620AL\  
 Data File : FD034961.D  
 Signal(s) : FID2B.CH  
 Acq On : 07 Oct 2020 7:18  
 Operator : DD\AJ  
 Sample : L4272-23  
 Misc :  
 ALS Vial : 75 Sample Multiplier: 1

Integration File: autoint1.e  
 Quant Time: Oct 07 08:50:52 2020  
 Quant Method : Z:\pestpcbsrv\HPCHEM1\FID\_D\methods\Alaphatic EPH 100120.M  
 Quant Title : GC Extractables  
 QLast Update : Fri Oct 02 09:52:32 2020  
 Response via : Initial Calibration  
 Integrator: ChemStation 6890 Scale Mode: Large solvent peaks clipped

Volume Inj. : 1 ul  
 Signal Phase : Rxi-1ms  
 Signal Info : 20M x 0.18mm x 0.18um

Compound	R.T.	Response	Conc Units
-----			
System Monitoring Compounds			
9) S ortho-Terphenyl (SURR)	11.582	3375155	26.395 ug/ml
Spiked Amount	50.000	Recovery	= 52.79%
12) S 1-chlorooctadecane (S...	13.012	2640801	26.233 ug/ml
Spiked Amount	50.000	Recovery	= 52.47%
Target Compounds			
6) T n-Tetradecane (C14)	8.196	196509	1.708 ug/ml
-----			

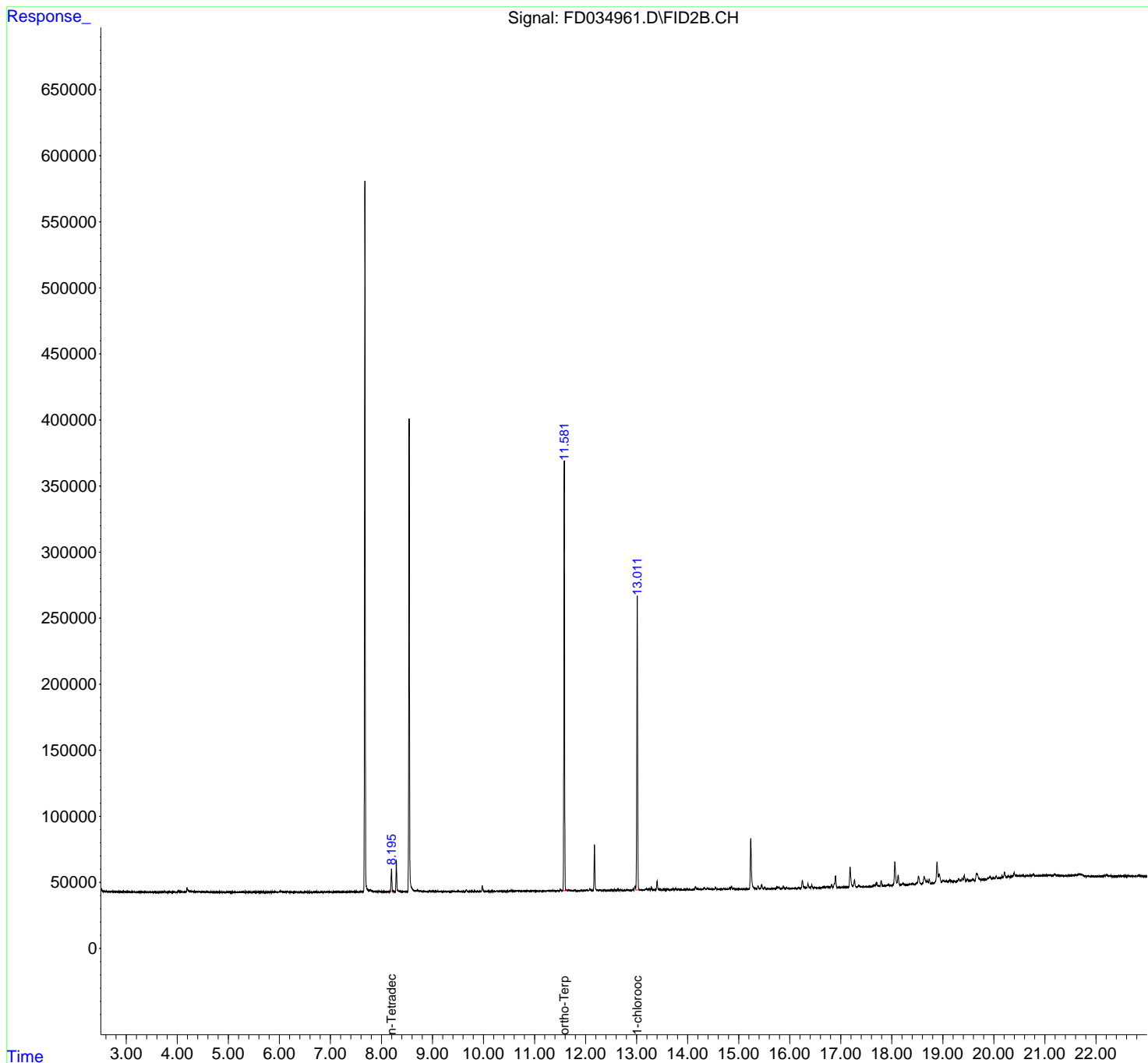
(f)=RT Delta > 1/2 Window

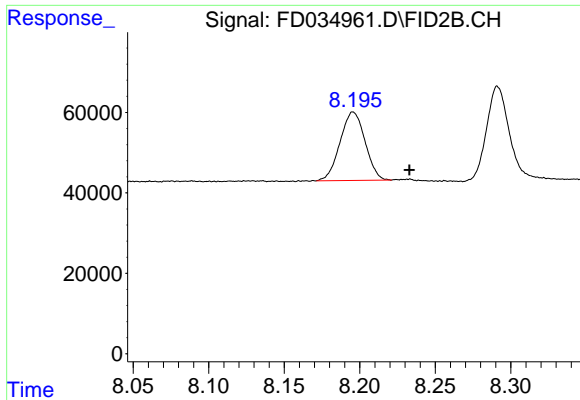
(m)=manual int.

Data Path : Z:\pestpcbsrv\HPCHEM1\FID\_D\Data\FD100620AL\  
Data File : FD034961.D  
Signal(s) : FID2B.CH  
Acq On : 07 Oct 2020 7:18  
Operator : DD\AJ  
Sample : L4272-23  
Misc :  
ALS Vial : 75 Sample Multiplier: 1

Integration File: autoint1.e  
Quant Time: Oct 07 08:50:52 2020  
Quant Method : Z:\pestpcbsrv\HPCHEM1\FID\_D\methods\Alaphatic EPH 100120.M  
Quant Title : GC Extractables  
QLast Update : Fri Oct 02 09:52:32 2020  
Response via : Initial Calibration  
Integrator: ChemStation 6890 Scale Mode: Large solvent peaks clipped

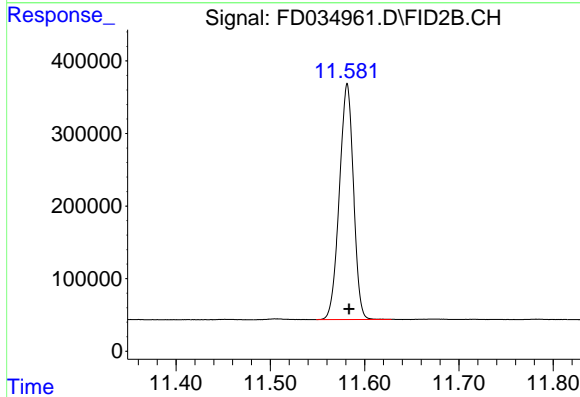
Volume Inj. : 1 ul  
Signal Phase : Rxi-1ms  
Signal Info : 20M x 0.18mm x 0.18um





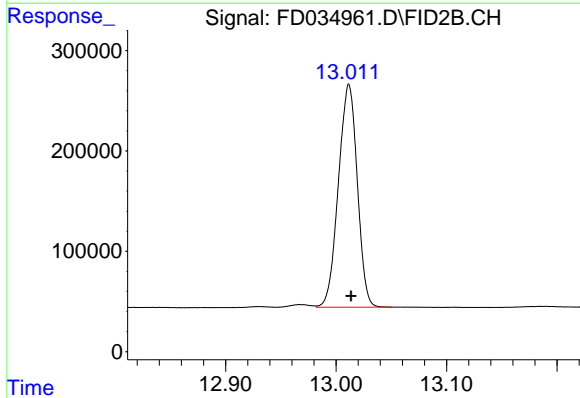
#6 n-Tetradecane (C14)

R.T.: 8.196 min  
Delta R.T.: -0.037 min  
Response: 196509  
Conc: 1.71 ug/ml



#9 ortho-Terphenyl (SURR)

R.T.: 11.582 min  
Delta R.T.: -0.002 min  
Response: 3375155  
Conc: 26.40 ug/ml



#12 1-chlorooctadecane (SURR)

R.T.: 13.012 min  
Delta R.T.: -0.002 min  
Response: 2640801  
Conc: 26.23 ug/ml