

Data Path : Z:\pestpcbsrv\HPCHEM1\FID_D\Data\FD100719AR\
 Data File : FD030912.D
 Signal(s) : FID2B.CH
 Acq On : 07 Oct 2019 18:07
 Operator : DD\AJ
 Sample : K5205-02D
 Misc :
 ALS Vial : 56 Sample Multiplier: 1

Integration File: autoint1.e
 Quant Time: Oct 08 08:39:23 2019
 Quant Method : Z:\pestpcbsrv\HPCHEM1\FID_D\methods\Aromatic EPH 092519.M
 Quant Title : GC Extractables
 QLast Update : Thu Sep 26 04:51:24 2019
 Response via : Initial Calibration
 Integrator: ChemStation 6890 Scale Mode: Large solvent peaks clipped

Volume Inj. : 1 µl
 Signal Phase : Rxi-1ms
 Signal Info : 20M x 0.18mm x 0.18µm

Compound	R.T.	Response	Conc Units

System Monitoring Compounds			
4) S 2-Bromonaphthalene (S...	7.568	5700692	33.479 ug/ml
Spiked Amount 50.000		Recovery =	66.96%
6) S 2-Fluorobiphenyl (SURR)	8.428	3668315	31.806 ug/ml
Spiked Amount 50.000 Range 0 - 131		Recovery =	63.61%
11) S ortho-Terphenyl (SURR)	11.458	4866628	26.061 ug/ml
Spiked Amount 50.000		Recovery =	52.12%

Target Compounds

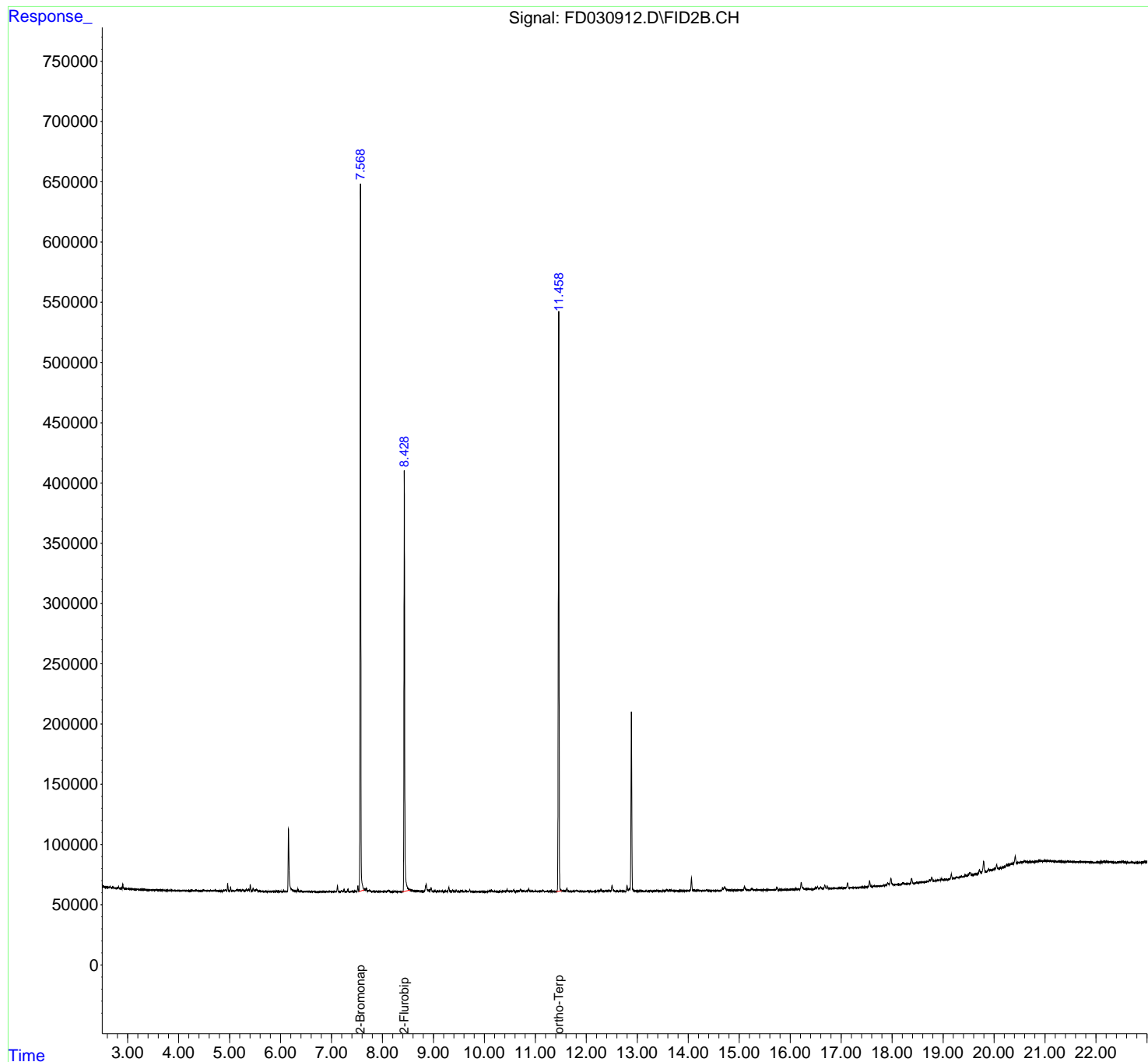
(f)=RT Delta > 1/2 Window

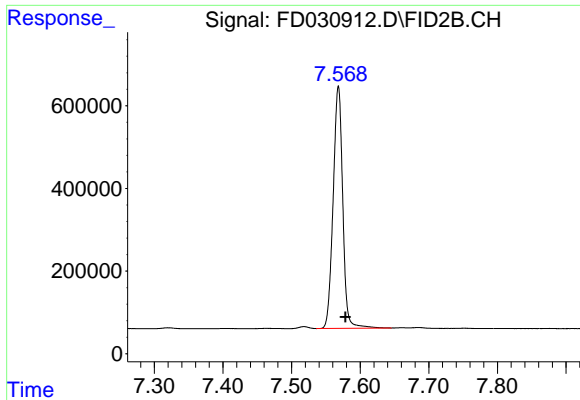
(m)=manual int.

Data Path : Z:\pestpcbsrv\HPCHEM1\FID_D\Data\FD100719AR\
Data File : FD030912.D
Signal(s) : FID2B.CH
Acq On : 07 Oct 2019 18:07
Operator : DD\AJ
Sample : K5205-02D
Misc :
ALS Vial : 56 Sample Multiplier: 1

Integration File: autoint1.e
Quant Time: Oct 08 08:39:23 2019
Quant Method : Z:\pestpcbsrv\HPCHEM1\FID_D\methods\Aromatic EPH 092519.M
Quant Title : GC Extractables
QLast Update : Thu Sep 26 04:51:24 2019
Response via : Initial Calibration
Integrator: ChemStation 6890 Scale Mode: Large solvent peaks clipped

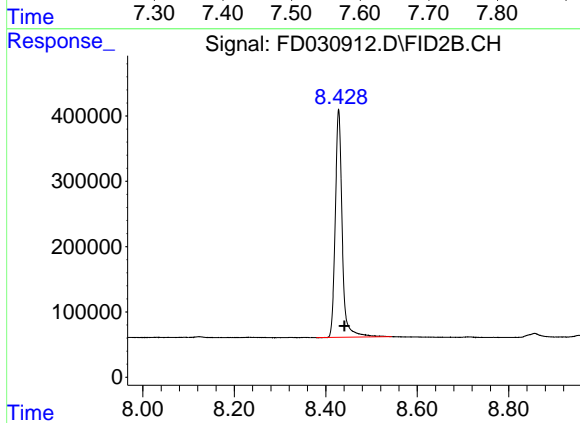
Volume Inj. : 1 µl
Signal Phase : Rxi-1ms
Signal Info : 20M x 0.18mm x 0.18µm





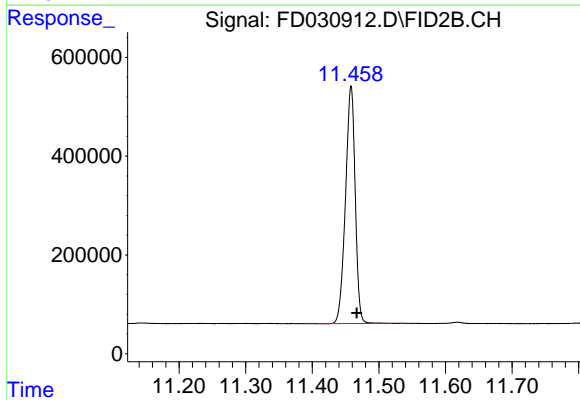
#4 2-Bromonaphthalene (SURR)

R.T.: 7.568 min
Delta R.T.: -0.010 min
Response: 5700692
Conc: 33.48 ug/ml



#6 2-Fluorobiphenyl (SURR)

R.T.: 8.428 min
Delta R.T.: -0.012 min
Response: 3668315
Conc: 31.81 ug/ml



#11 ortho-Terphenyl (SURR)

R.T.: 11.458 min
Delta R.T.: -0.008 min
Response: 4866628
Conc: 26.06 ug/ml