

Data Path : Z:\pestpcbsrv\HPCHEM1\FID_D\Data\FD100720AL\
 Data File : FD034985.D
 Signal(s) : FID2B.CH
 Acq On : 07 Oct 2020 23:01
 Operator : DD\AJ
 Sample : PB132167BSD
 Misc :
 ALS Vial : 67 Sample Multiplier: 1

Integration File: autoint1.e
 Quant Time: Oct 08 02:23:35 2020
 Quant Method : Z:\pestpcbsrv\HPCHEM1\FID_D\methods\Alaphatic EPH 100120.M
 Quant Title : GC Extractables
 QLast Update : Fri Oct 02 09:52:32 2020
 Response via : Initial Calibration
 Integrator: ChemStation 6890 Scale Mode: Large solvent peaks clipped

Volume Inj. : 1 ul
 Signal Phase : Rxi-1ms
 Signal Info : 20M x 0.18mm x 0.18um

| Compound | R.T. | Response | Conc Units |
|--------------------------------|--------|----------|---------------|
| ----- | | | |
| System Monitoring Compounds | | | |
| 9) S ortho-Terphenyl (SURR) | 11.585 | 6670087 | 52.163 ug/ml |
| Spiked Amount | 50.000 | Recovery | = 104.33% |
| 12) S 1-chlorooctadecane (S... | 13.014 | 5360996 | 53.255 ug/ml |
| Spiked Amount | 50.000 | Recovery | = 106.51% |
| Target Compounds | | | |
| 1) T n-Nonane (C9) | 3.372 | 5516326 | 49.122 ug/ml |
| 2) T n-Decane (C10) | 4.434 | 5853779 | 51.950 ug/ml |
| 3) T A~Naphthalene (C11.7) | 6.013 | 6643225 | 53.630 ug/ml |
| 4) T n-Dodecane (C12) | 6.443 | 6258690 | 54.430 ug/ml |
| 5) T A~2-methylnaphthalene... | 7.067 | 6745747 | 53.545 ug/ml |
| 6) T n-Tetradecane (C14) | 8.234 | 6486439 | 56.375 ug/ml |
| 7) T n-Hexadecane (C16) | 9.829 | 6659086 | 58.406 ug/ml |
| 8) T n-Octadecane (C18) | 11.267 | 6823501 | 57.339 ug/ml |
| 10) T n-Eicosane (C20) | 12.572 | 6777322 | 56.207 ug/ml |
| 11) T n-Heneicosane (C21) | 13.181 | 6801615 | 56.439 ug/ml |
| 13) T n-Docosane (C22) | 13.766 | 6772615 | 56.283 ug/ml |
| 14) T n-Tetracosane (C24) | 14.855 | 13075501 | 108.638 ug/ml |
| 15) T n-Hexacosane (C26) | 15.882 | 6420830 | 54.211 ug/ml |
| 16) T n-Octacosane (C28) | 16.825 | 6303407 | 53.855 ug/ml |
| 17) T n-Tricontane (C30) | 17.710 | 5953039 | 52.681 ug/ml |
| 18) T n-Dotriacontane (C32) | 18.537 | 5580170 | 53.230 ug/ml |
| 19) T n-Tetratriacontane (C34) | 19.315 | 5251344 | 54.954 ug/ml |
| 20) T n-Hexatriacontane (C36) | 20.050 | 4897546 | 57.082 ug/ml |
| 21) T n-Octatriacontane (C38) | 20.777 | 4692303 | 58.428 ug/ml |
| 22) T n-Tetracontane (C40) | 21.674 | 4812387 | 54.821 ug/ml |
| ----- | | | |

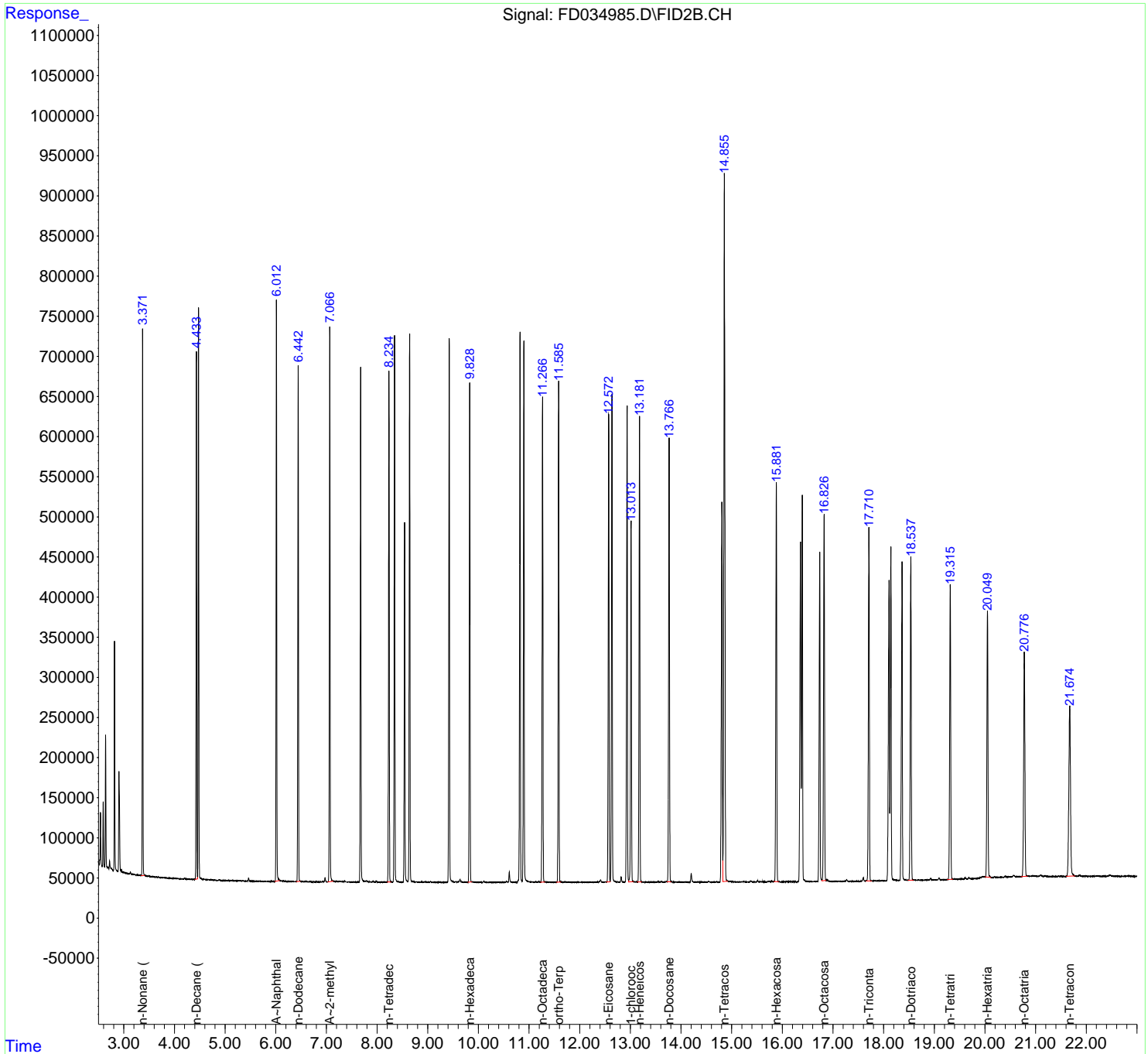
(f)=RT Delta > 1/2 Window

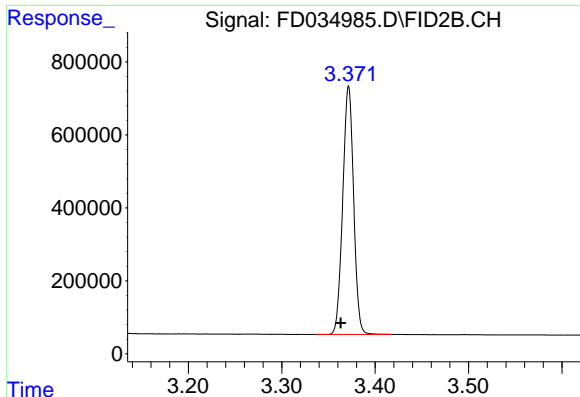
(m)=manual int.

Data Path : Z:\pestpcbsrv\HPCHEM1\FID_D\Data\FD100720AL\
 Data File : FD034985.D
 Signal(s) : FID2B.CH
 Acq On : 07 Oct 2020 23:01
 Operator : DD\AJ
 Sample : PB132167BSD
 Misc :
 ALS Vial : 67 Sample Multiplier: 1

Integration File: autoint1.e
 Quant Time: Oct 08 02:23:35 2020
 Quant Method : Z:\pestpcbsrv\HPCHEM1\FID_D\methods\Alaphatic EPH 100120.M
 Quant Title : GC Extractables
 QLast Update : Fri Oct 02 09:52:32 2020
 Response via : Initial Calibration
 Integrator: ChemStation 6890 Scale Mode: Large solvent peaks clipped

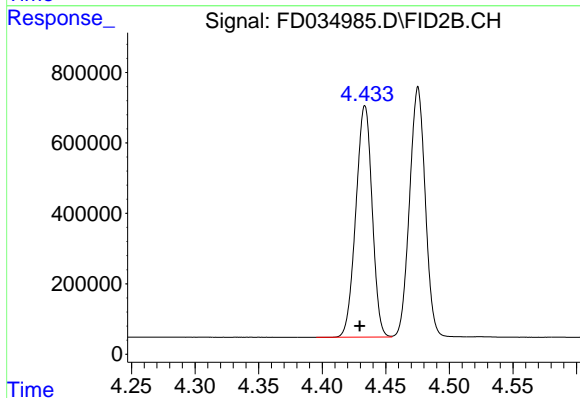
Volume Inj. : 1 ul
 Signal Phase : Rxi-1ms
 Signal Info : 20M x 0.18mm x 0.18um





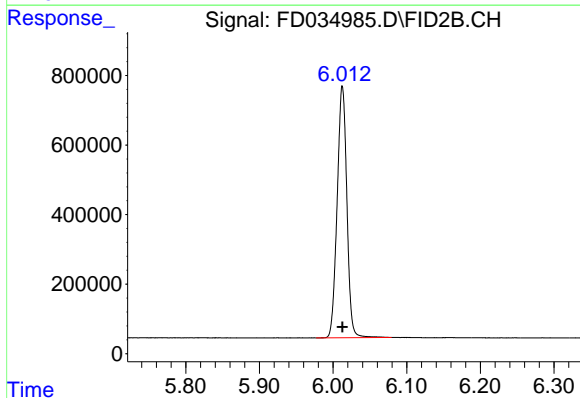
#1 n-Nonane (C9)

R.T.: 3.372 min
Delta R.T.: 0.009 min
Response: 5516326
Conc: 49.12 ug/ml



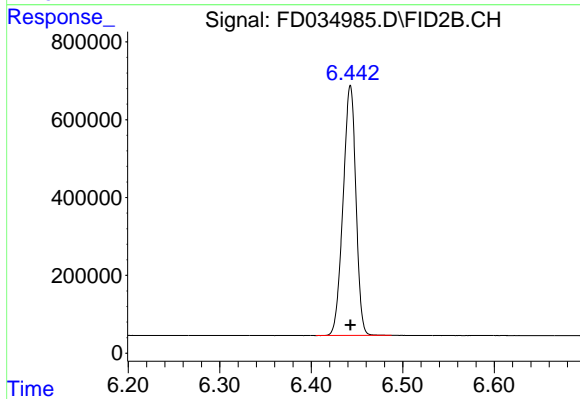
#2 n-Decane (C10)

R.T.: 4.434 min
Delta R.T.: 0.004 min
Response: 5853779
Conc: 51.95 ug/ml



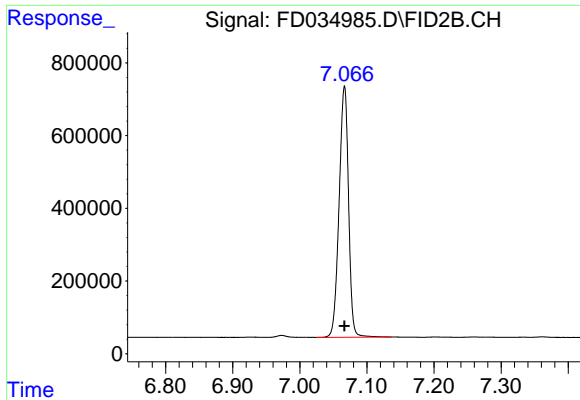
#3 A~Naphthalene (C11.7)

R.T.: 6.013 min
Delta R.T.: 0.000 min
Response: 6643225
Conc: 53.63 ug/ml



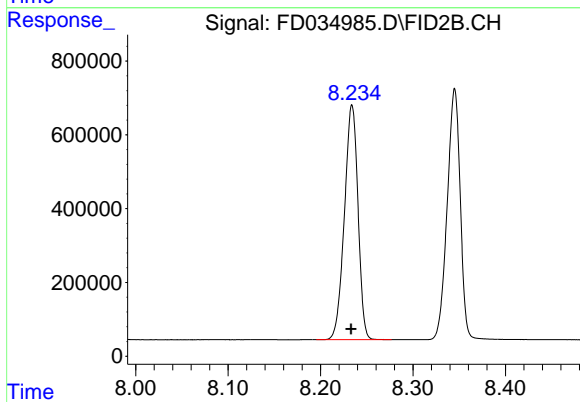
#4 n-Dodecane (C12)

R.T.: 6.443 min
Delta R.T.: 0.000 min
Response: 6258690
Conc: 54.43 ug/ml



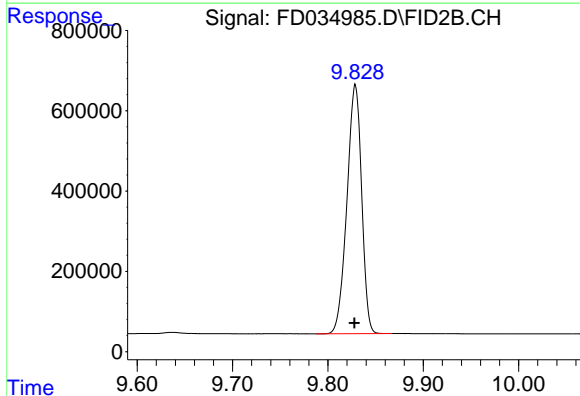
#5 A~2-methylnaphthalene (C12.89)

R.T.: 7.067 min
Delta R.T.: 0.000 min
Response: 6745747
Conc: 53.55 ug/ml



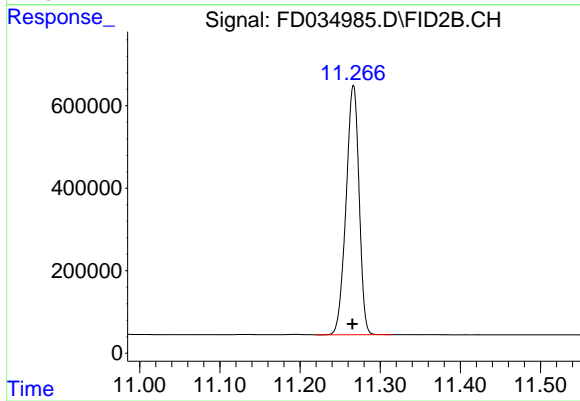
#6 n-Tetradecane (C14)

R.T.: 8.234 min
Delta R.T.: 0.001 min
Response: 6486439
Conc: 56.37 ug/ml



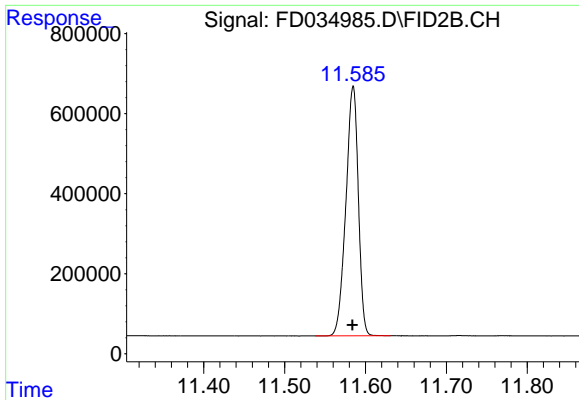
#7 n-Hexadecane (C16)

R.T.: 9.829 min
Delta R.T.: 0.000 min
Response: 6659086
Conc: 58.41 ug/ml

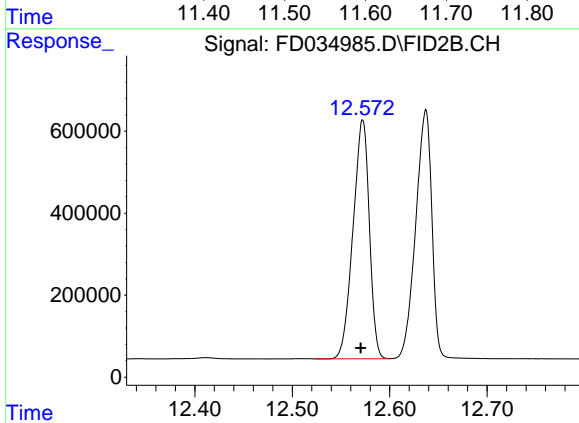


#8 n-Octadecane (C18)

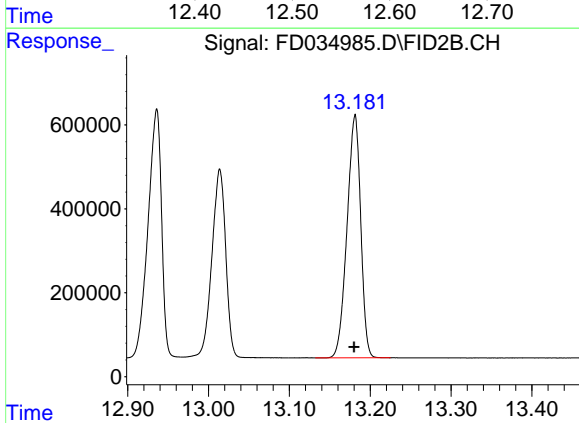
R.T.: 11.267 min
Delta R.T.: 0.001 min
Response: 6823501
Conc: 57.34 ug/ml



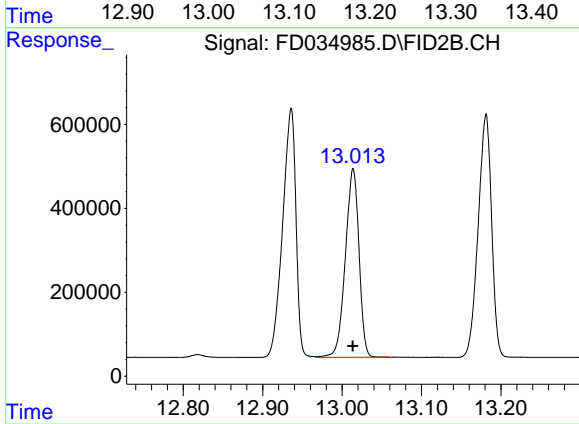
#9 ortho-Terphenyl (SURR)
 R.T.: 11.585 min
 Delta R.T.: 0.001 min
 Response: 6670087
 Conc: 52.16 ug/ml



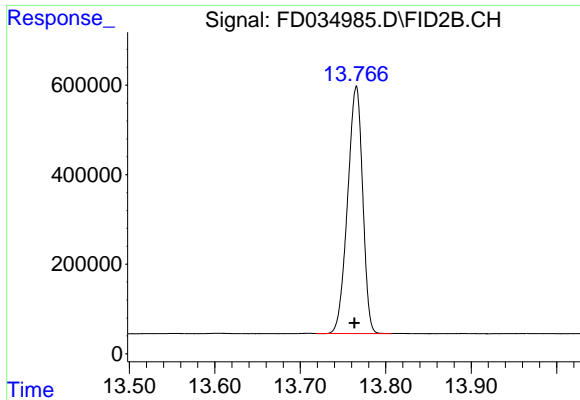
#10 n-Eicosane (C20)
 R.T.: 12.572 min
 Delta R.T.: 0.002 min
 Response: 6777322
 Conc: 56.21 ug/ml



#11 n-Heneicosane (C21)
 R.T.: 13.181 min
 Delta R.T.: 0.001 min
 Response: 6801615
 Conc: 56.44 ug/ml

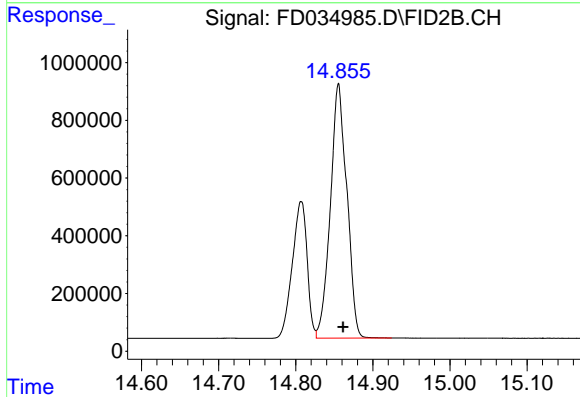


#12 1-chlorooctadecane (SURR)
 R.T.: 13.014 min
 Delta R.T.: 0.000 min
 Response: 5360996
 Conc: 53.25 ug/ml



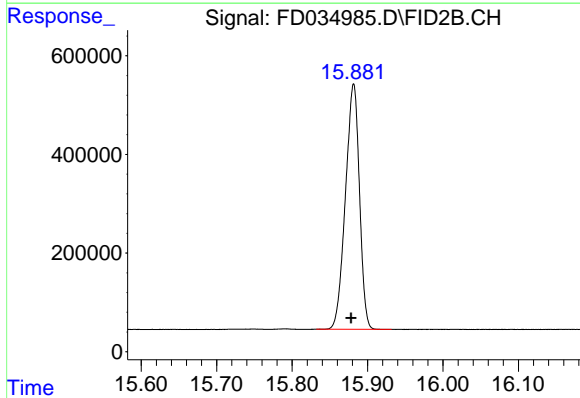
#13 n-Docosane (C22)

R.T.: 13.766 min
Delta R.T.: 0.002 min
Response: 6772615
Conc: 56.28 ug/ml



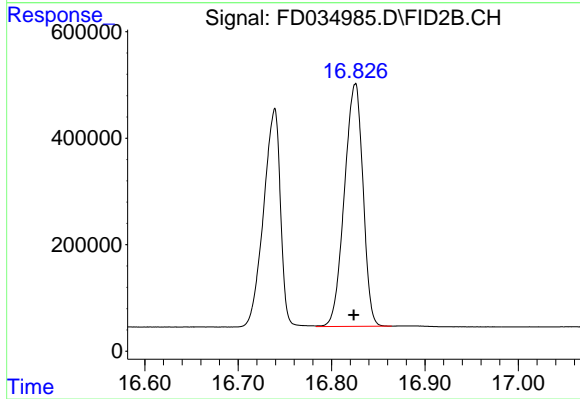
#14 n-Tetracosane (C24)

R.T.: 14.855 min
Delta R.T.: -0.006 min
Response: 13075501
Conc: 108.64 ug/ml



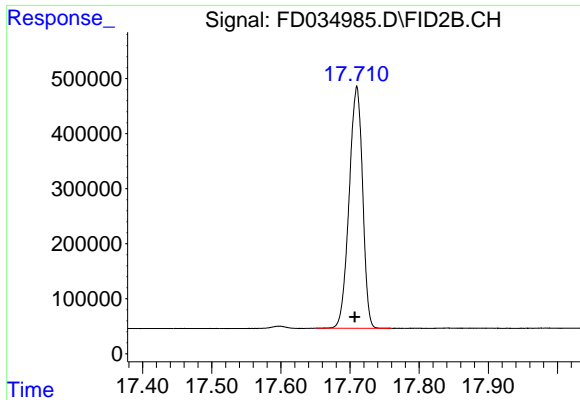
#15 n-Hexacosane (C26)

R.T.: 15.882 min
Delta R.T.: 0.004 min
Response: 6420830
Conc: 54.21 ug/ml



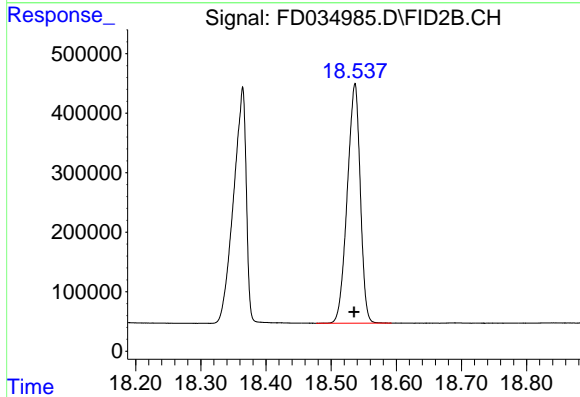
#16 n-Octacosane (C28)

R.T.: 16.825 min
Delta R.T.: 0.002 min
Response: 6303407
Conc: 53.86 ug/ml



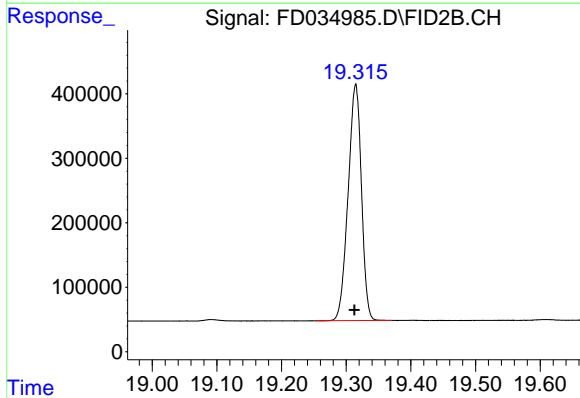
#17 n-Tricontane (C30)

R.T.: 17.710 min
Delta R.T.: 0.003 min
Response: 5953039
Conc: 52.68 ug/ml



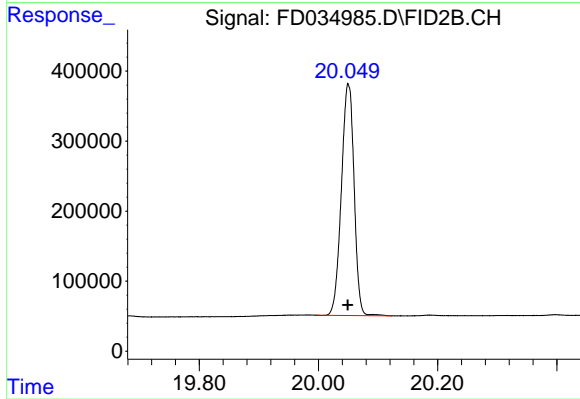
#18 n-Dotriacontane (C32)

R.T.: 18.537 min
Delta R.T.: 0.002 min
Response: 5580170
Conc: 53.23 ug/ml



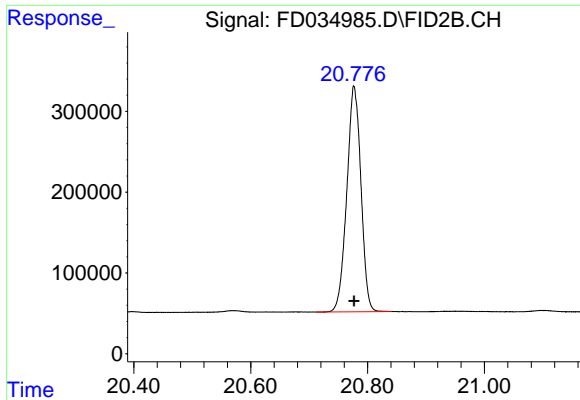
#19 n-Tetratriacontane (C34)

R.T.: 19.315 min
Delta R.T.: 0.002 min
Response: 5251344
Conc: 54.95 ug/ml



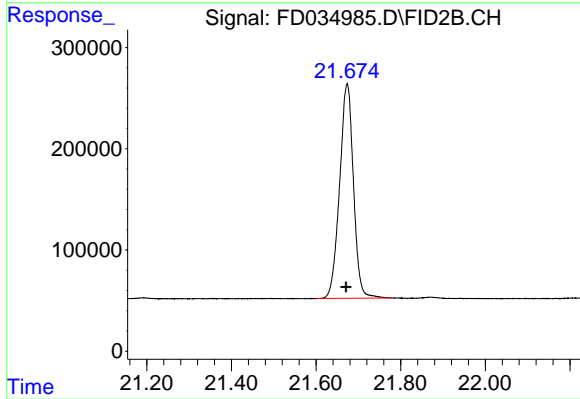
#20 n-Hexatriacontane (C36)

R.T.: 20.050 min
Delta R.T.: 0.000 min
Response: 4897546
Conc: 57.08 ug/ml



#21 n-Octatriacontane (C38)

R.T.: 20.777 min
Delta R.T.: 0.000 min
Response: 4692303
Conc: 58.43 ug/ml



#22 n-Tetracontane (C40)

R.T.: 21.674 min
Delta R.T.: 0.003 min
Response: 4812387
Conc: 54.82 ug/ml