

Data Path : Z:\pestpcbsrv\HPCHEM1\FID\_D\Data\FD100818AL\  
 Data File : FD025884.D  
 Signal(s) : FID2B.CH  
 Acq On : 08 Oct 2018 18:55  
 Operator : AJ\SJ  
 Sample : J5309-07  
 Misc :  
 ALS Vial : 61 Sample Multiplier: 1

Integration File: autoint1.e  
 Quant Time: Oct 09 05:00:00 2018  
 Quant Method : Z:\pestpcbsrv\HPCHEM1\FID\_D\methods\Alaphatic EPH 091718.M  
 Quant Title : GC Extractables  
 QLast Update : Tue Sep 18 07:25:24 2018  
 Response via : Initial Calibration  
 Integrator: ChemStation 6890 Scale Mode: Large solvent peaks clipped

Volume Inj. : 1 ul  
 Signal Phase : Rxi-1ms  
 Signal Info : 20M x 0.18mm x 0.18um

Compound	R.T.	Response	Conc Units
System Monitoring Compounds			
9) S ortho-Terphenyl (SURR)	11.320	3737940	44.546 ug/ml
Spiked Amount	50.000	Recovery	= 89.09%
12) S 1-chlorooctadecane (S...	12.762	2786140	45.633 ug/ml
Spiked Amount	50.000	Recovery	= 91.27%

Target Compounds

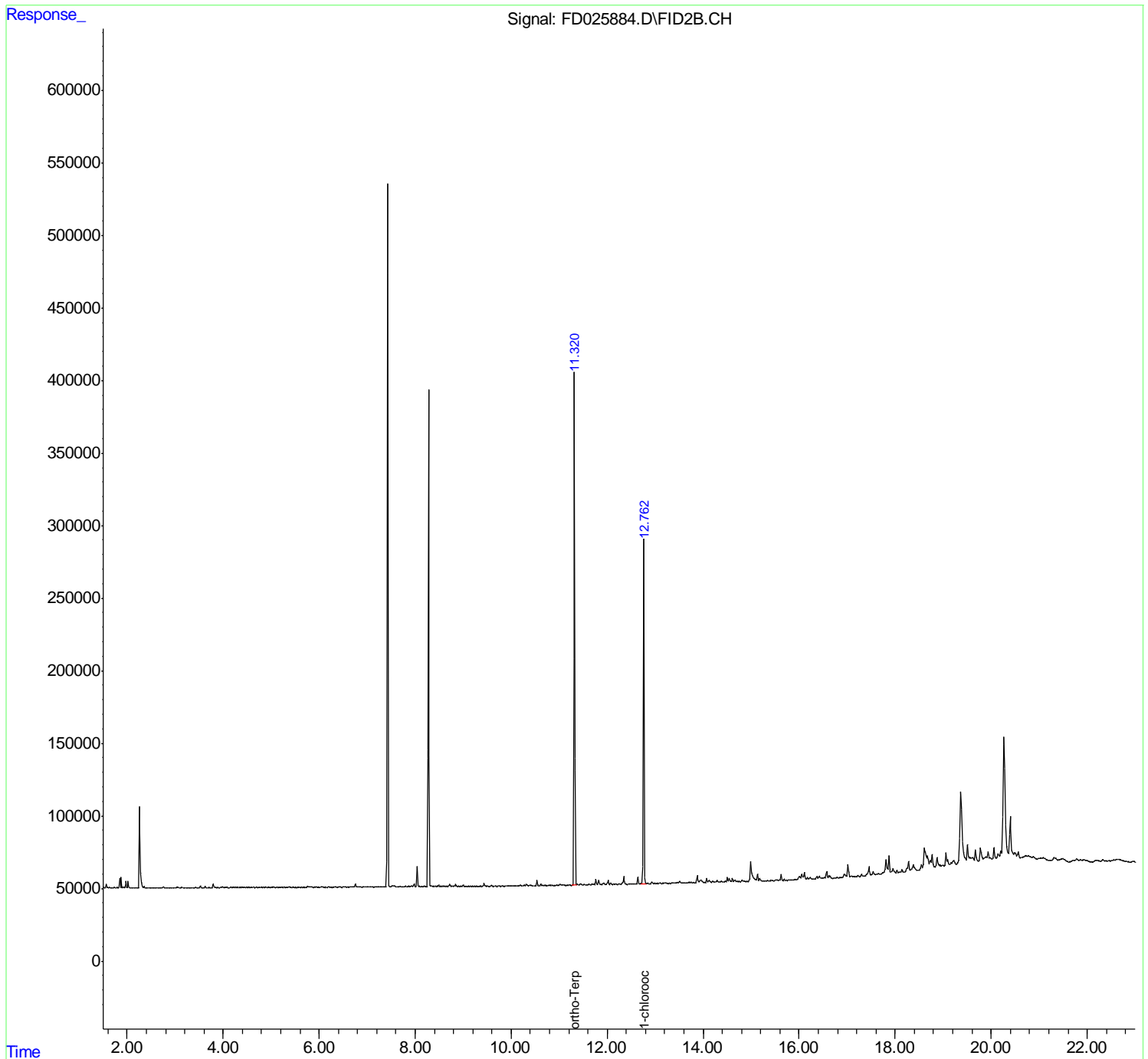
(f)=RT Delta > 1/2 Window

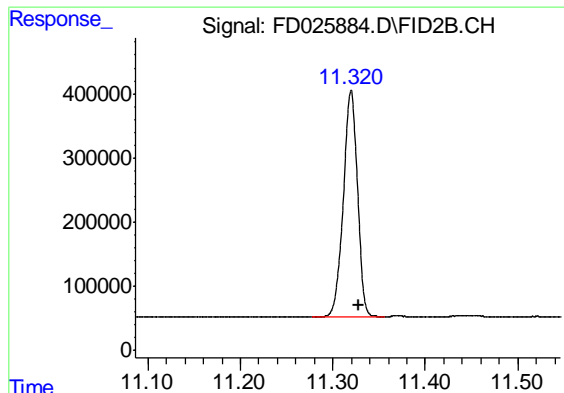
(m)=manual int.

Data Path : Z:\pestpcbsrv\HPCHEM1\FID\_D\Data\FD100818AL\  
Data File : FD025884.D  
Signal(s) : FID2B.CH  
Acq On : 08 Oct 2018 18:55  
Operator : AJ\SJ  
Sample : J5309-07  
Misc :  
ALS Vial : 61 Sample Multiplier: 1

Integration File: autoint1.e  
Quant Time: Oct 09 05:00:00 2018  
Quant Method : Z:\pestpcbsrv\HPCHEM1\FID\_D\methods\Alaphatic EPH 091718.M  
Quant Title : GC Extractables  
QLast Update : Tue Sep 18 07:25:24 2018  
Response via : Initial Calibration  
Integrator: ChemStation 6890 Scale Mode: Large solvent peaks clipped

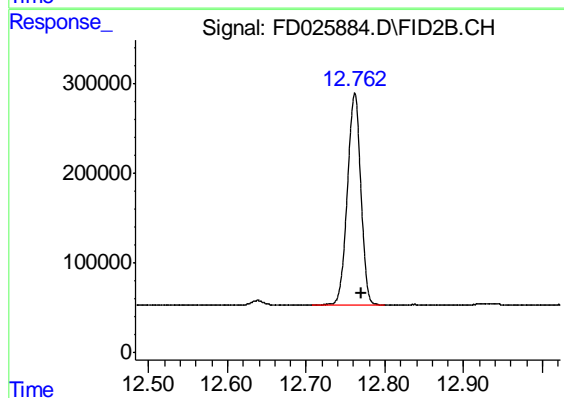
Volume Inj. : 1 ul  
Signal Phase : Rxi-1ms  
Signal Info : 20M x 0.18mm x 0.18um





#9 ortho-Terphenyl (SURR)

R.T.: 11.320 min  
Delta R.T.: -0.008 min  
Response: 3737940  
Conc: 44.55 ug/ml



#12 1-chlorooctadecane (SURR)

R.T.: 12.762 min  
Delta R.T.: -0.009 min  
Response: 2786140  
Conc: 45.63 ug/ml