

Data Path : Z:\pestpcbsrv\HPCHEM1\FID_D\Data\FD101018AR\
 Data File : FD025946.D
 Signal(s) : FID2B.CH
 Acq On : 11 Oct 2018 1:53
 Operator : AJ\SJ
 Sample : J5373-01
 Misc :
 ALS Vial : 68 Sample Multiplier: 1

Integration File: autoint1.e
 Quant Time: Oct 11 03:18:46 2018
 Quant Method : Z:\pestpcbsrv\HPCHEM1\FID_D\methods\Aromatic EPH 092618.M
 Quant Title : GC Extractables
 QLast Update : Wed Sep 26 13:16:31 2018
 Response via : Initial Calibration
 Integrator: ChemStation 6890 Scale Mode: Large solvent peaks clipped

Volume Inj. : 1 µl
 Signal Phase : Rxi-1ms
 Signal Info : 20M x 0.18mm x 0.18µm

Compound	R.T.	Response	Conc Units
System Monitoring Compounds			
4) S 2-Bromonaphthalene (S...	7.424	4239313	54.304 ug/ml
Spiked Amount 50.000		Recovery =	108.61%
6) S 2-Fluorobiphenyl (SURR)	8.276	3078623	55.872 ug/ml
Spiked Amount 50.000 Range 0 - 131		Recovery =	111.74%
11) S ortho-Terphenyl (SURR)	11.319	3054180	35.509 ug/ml
Spiked Amount 50.000		Recovery =	71.02%

Target Compounds

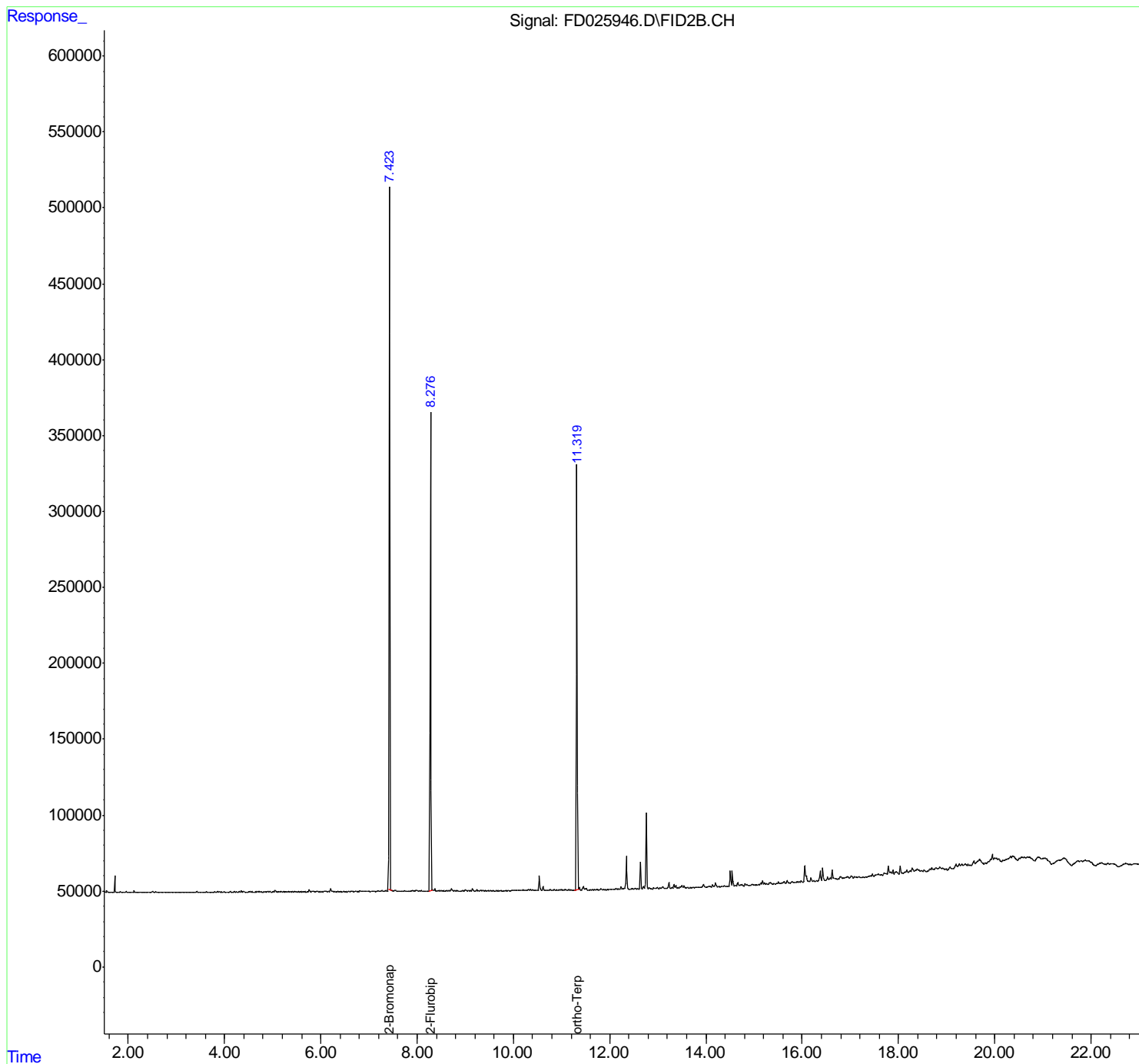
(f)=RT Delta > 1/2 Window

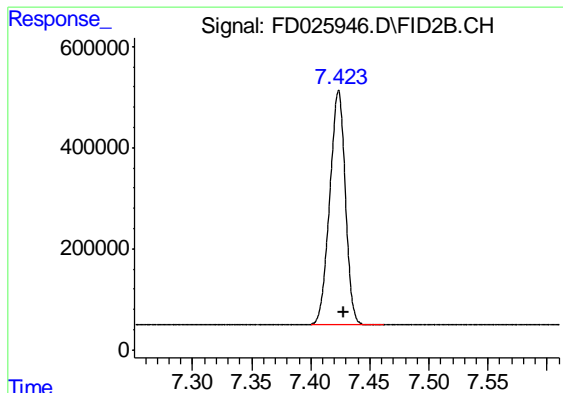
(m)=manual int.

Data Path : Z:\pestpcbsrv\HPCHEM1\FID_D\Data\FD101018AR\
Data File : FD025946.D
Signal(s) : FID2B.CH
Acq On : 11 Oct 2018 1:53
Operator : AJ\SJ
Sample : J5373-01
Misc :
ALS Vial : 68 Sample Multiplier: 1

Integration File: autoint1.e
Quant Time: Oct 11 03:18:46 2018
Quant Method : Z:\pestpcbsrv\HPCHEM1\FID_D\methods\Aromatic EPH 092618.M
Quant Title : GC Extractables
QLast Update : Wed Sep 26 13:16:31 2018
Response via : Initial Calibration
Integrator: ChemStation 6890 Scale Mode: Large solvent peaks clipped

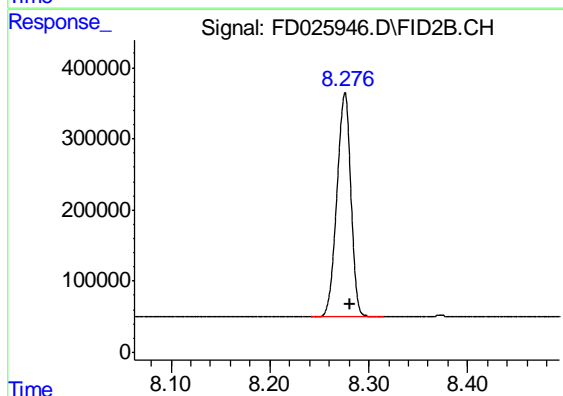
Volume Inj. : 1 µl
Signal Phase : Rxi-1ms
Signal Info : 20M x 0.18mm x 0.18µm





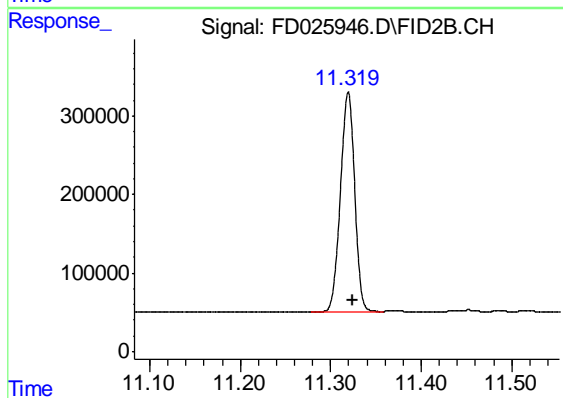
#4 2-Bromonaphthalene (SURR)

R.T.: 7.424 min
Delta R.T.: -0.005 min
Response: 4239313
Conc: 54.30 ug/ml



#6 2-Fluorobiphenyl (SURR)

R.T.: 8.276 min
Delta R.T.: -0.005 min
Response: 3078623
Conc: 55.87 ug/ml



#11 ortho-Terphenyl (SURR)

R.T.: 11.319 min
Delta R.T.: -0.005 min
Response: 3054180
Conc: 35.51 ug/ml