

Data Path : Z:\pestpcbsrv\HPCHEM1\FID\_D\Data\FD101019AL\  
 Data File : FD030962.D  
 Signal(s) : FID2B.CH  
 Acq On : 10 Oct 2019 15:45  
 Operator : DD\AJ  
 Sample : PB123730BS  
 Misc :  
 ALS Vial : 58 Sample Multiplier: 1

Instrument :  
 FID\_D  
 ClientSampleId :  
 PB123730BS

Integration File: autoint1.e  
 Quant Time: Oct 11 03:28:17 2019  
 Quant Method : Z:\pestpcbsrv\HPCHEM1\FID\_D\methods\Alaphatic EPH 092519.M  
 Quant Title : GC Extractables  
 QLast Update : Thu Sep 26 03:19:09 2019  
 Response via : Initial Calibration  
 Integrator: ChemStation 6890 Scale Mode: Large solvent peaks clipped

Volume Inj. : 1 ul  
 Signal Phase : Rxi-1ms  
 Signal Info : 20M x 0.18mm x 0.18um

Compound	R.T.	Response	Conc Units
-----			
System Monitoring Compounds			
9) S ortho-Terphenyl (SURR)	11.457	8350649	59.532 ug/ml
Spiked Amount	50.000	Recovery	= 119.06%
12) S 1-chlorooctadecane (S...	12.884	6756749	62.274 ug/ml
Spiked Amount	50.000	Recovery	= 124.55%
Target Compounds			
1) T n-Nonane (C9)	3.284	4565535	38.864 ug/ml
2) T n-Decane (C10)	4.338	5569760	47.439 ug/ml
3) T A~Naphthalene (C11.7)	5.906	6873015	52.676 ug/ml
4) T n-Dodecane (C12)	6.339	6380015	53.613 ug/ml
5) T A~2-methylnaphthalene...	6.956	7122892	54.033 ug/ml
6) T n-Tetradecane (C14)	8.124	6744087	55.966 ug/ml
7) T n-Hexadecane (C16)	9.712	6873719	56.205 ug/ml
8) T n-Octadecane (C18)	11.144	6796025	54.559 ug/ml
10) T n-Eicosane (C20)	12.444	6656975	52.790 ug/ml
11) T n-Heneicosane (C21)	13.050	6561703	51.321 ug/ml
13) T n-Docosane (C22)	13.631	6441873	50.286 ug/ml
14) T n-Tetracosane (C24)	14.712	11978796	92.314 ug/ml
15) T n-Hexacosane (C26)	15.740	5883277	45.307 ug/ml
16) T n-Octacosane (C28)	16.722	267720	2.068 ug/ml
17) T n-Tricontane (C30)	17.560	5618697	43.248 ug/ml
18) T n-Dotriacontane (C32)	18.383	5370318	42.639 ug/ml
19) T n-Tetratriacontane (C34)	19.160	4848941	39.842 ug/ml
20) T n-Hexatriacontane (C36)	19.890	4017354	34.829 ug/ml
21) T n-Octatriacontane (C38)	20.593	3498026	33.167 ug/ml
22) T n-Tetracontane (C40)	21.426	3488357	32.969 ug/ml

(f)=RT Delta > 1/2 Window

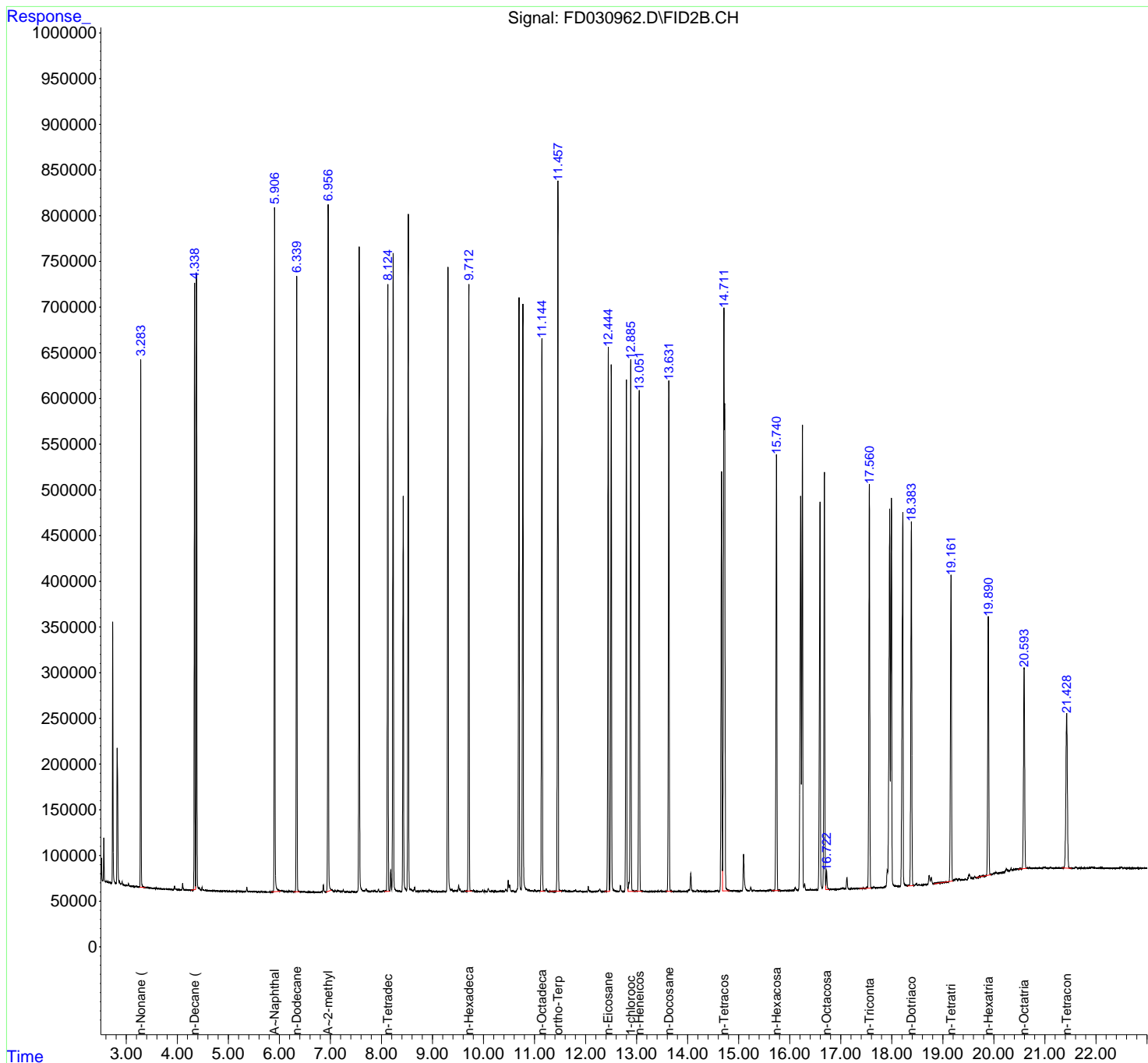
(m)=manual int.

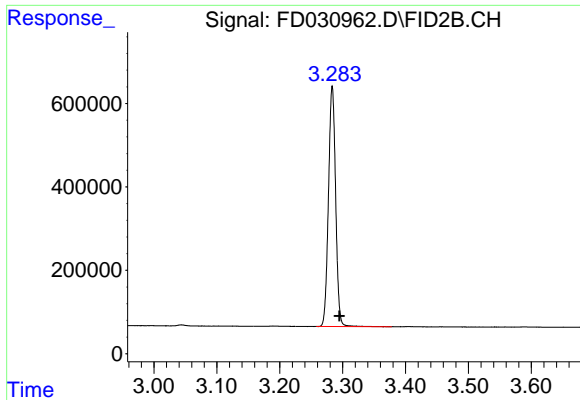
Data Path : Z:\pestpcbsrv\HPCHEM1\FID\_D\Data\FD101019AL\  
 Data File : FD030962.D  
 Signal(s) : FID2B.CH  
 Acq On : 10 Oct 2019 15:45  
 Operator : DD\AJ  
 Sample : PB123730BS  
 Misc :  
 ALS Vial : 58 Sample Multiplier: 1

Instrument :  
 FID\_D  
 ClientSampled :  
 PB123730BS

Integration File: autoint1.e  
 Quant Time: Oct 11 03:28:17 2019  
 Quant Method : Z:\pestpcbsrv\HPCHEM1\FID\_D\methods\Alaphatic EPH 092519.M  
 Quant Title : GC Extractables  
 QLast Update : Thu Sep 26 03:19:09 2019  
 Response via : Initial Calibration  
 Integrator: ChemStation 6890 Scale Mode: Large solvent peaks clipped

Volume Inj. : 1 ul  
 Signal Phase : Rxi-1ms  
 Signal Info : 20M x 0.18mm x 0.18um

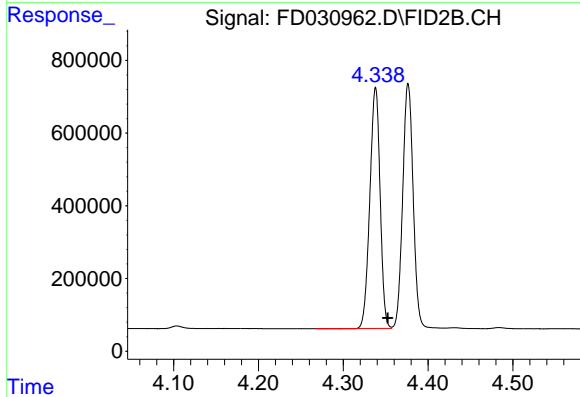




#1 n-Nonane (C9)

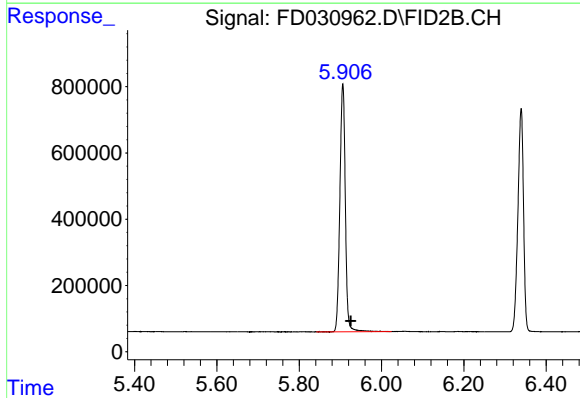
R.T.: 3.284 min  
Delta R.T.: -0.011 min  
Response: 4565535  
Conc: 38.86 ug/ml

Instrument :  
FID\_D  
ClientSampleId :  
PB123730BS



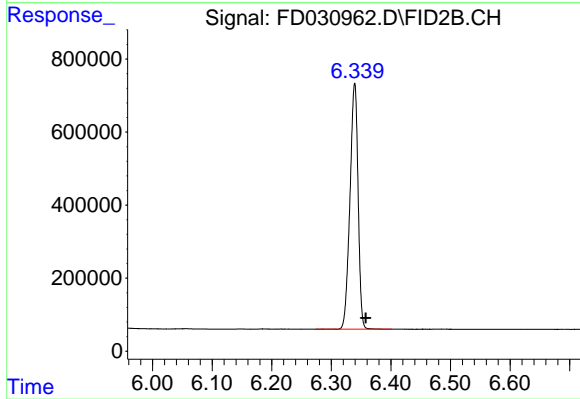
#2 n-Decane (C10)

R.T.: 4.338 min  
Delta R.T.: -0.014 min  
Response: 5569760  
Conc: 47.44 ug/ml



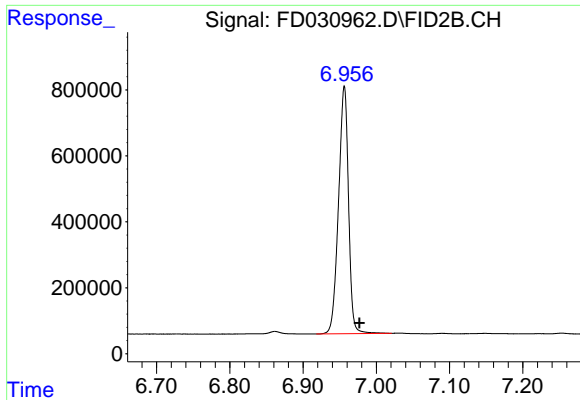
#3 A~Naphthalene (C11.7)

R.T.: 5.906 min  
Delta R.T.: -0.019 min  
Response: 6873015  
Conc: 52.68 ug/ml



#4 n-Dodecane (C12)

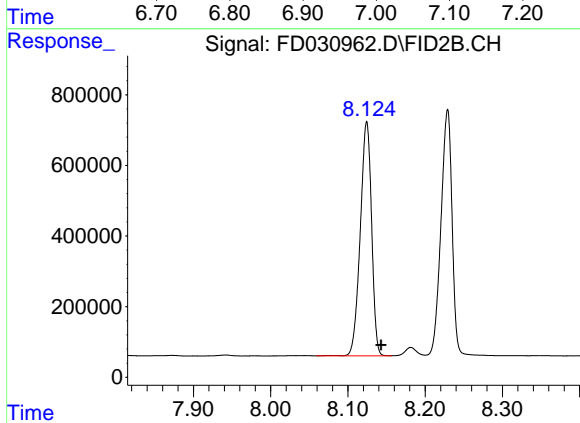
R.T.: 6.339 min  
Delta R.T.: -0.019 min  
Response: 6380015  
Conc: 53.61 ug/ml



#5 A~2-methylnaphthalene (C12.89)

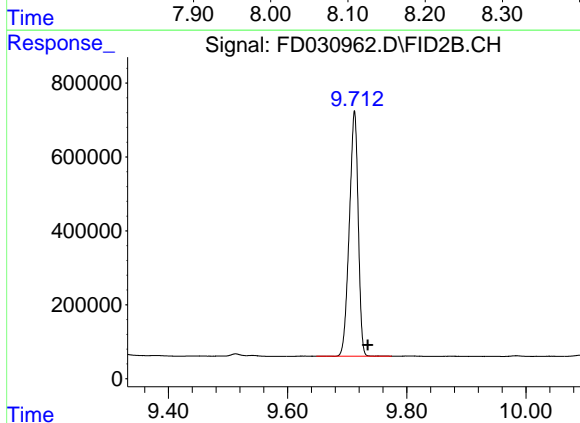
R.T.: 6.956 min  
Delta R.T.: -0.021 min  
Response: 7122892  
Conc: 54.03 ug/ml

Instrument :  
FID\_D  
ClientSampleId :  
PB123730BS



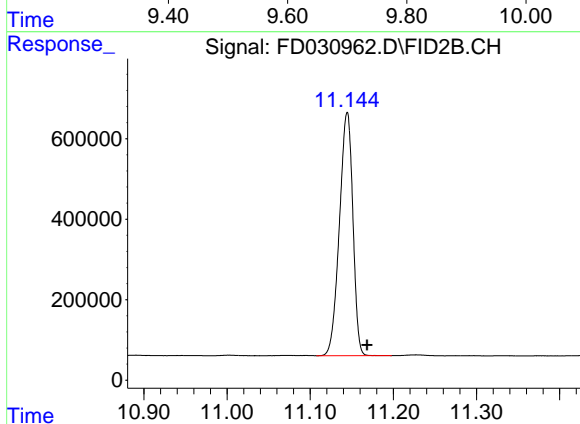
#6 n-Tetradecane (C14)

R.T.: 8.124 min  
Delta R.T.: -0.019 min  
Response: 6744087  
Conc: 55.97 ug/ml



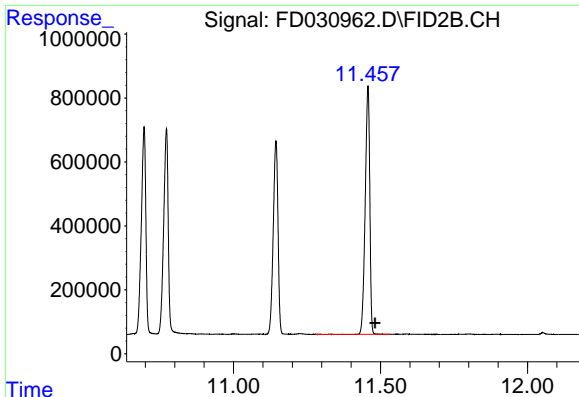
#7 n-Hexadecane (C16)

R.T.: 9.712 min  
Delta R.T.: -0.022 min  
Response: 6873719  
Conc: 56.21 ug/ml



#8 n-Octadecane (C18)

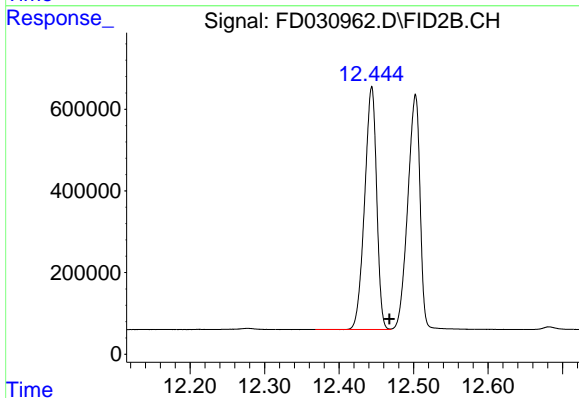
R.T.: 11.144 min  
Delta R.T.: -0.024 min  
Response: 6796025  
Conc: 54.56 ug/ml



#9 ortho-Terphenyl (SURR)

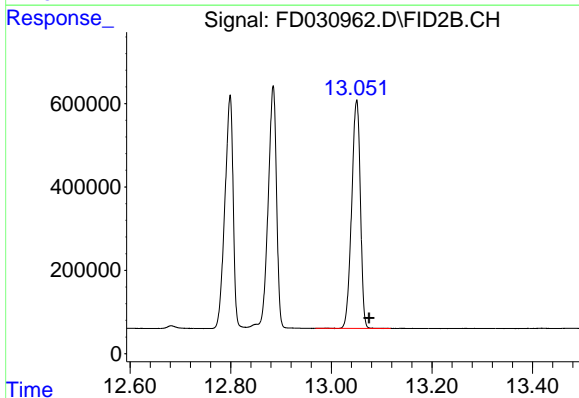
R.T.: 11.457 min  
 Delta R.T.: -0.025 min  
 Response: 8350649  
 Conc: 59.53 ug/ml

Instrument :  
 FID\_D  
 ClientSampleId :  
 PB123730BS



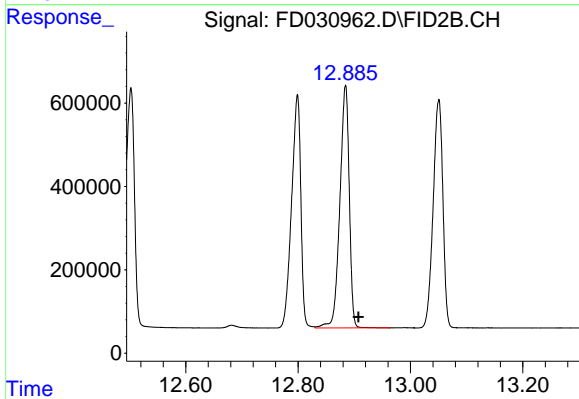
#10 n-Eicosane (C20)

R.T.: 12.444 min  
 Delta R.T.: -0.024 min  
 Response: 6656975  
 Conc: 52.79 ug/ml



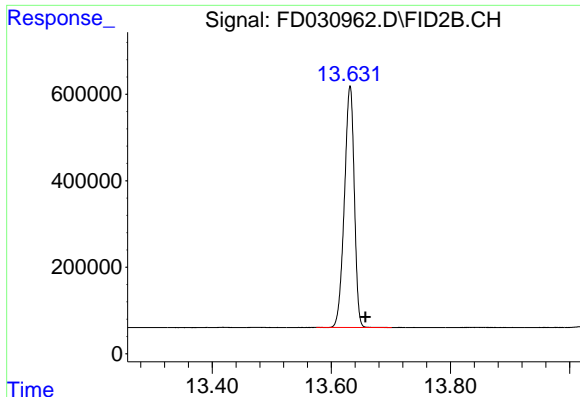
#11 n-Heneicosane (C21)

R.T.: 13.050 min  
 Delta R.T.: -0.025 min  
 Response: 6561703  
 Conc: 51.32 ug/ml



#12 1-chlorooctadecane (SURR)

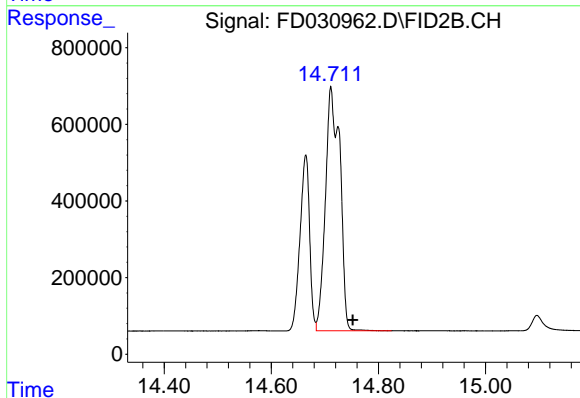
R.T.: 12.884 min  
 Delta R.T.: -0.023 min  
 Response: 6756749  
 Conc: 62.27 ug/ml



#13 n-Docosane (C22)

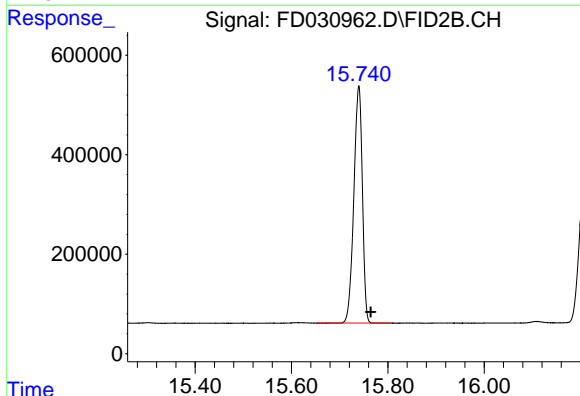
R.T.: 13.631 min  
Delta R.T.: -0.026 min  
Response: 6441873  
Conc: 50.29 ug/ml

Instrument :  
FID\_D  
ClientSampleId :  
PB123730BS



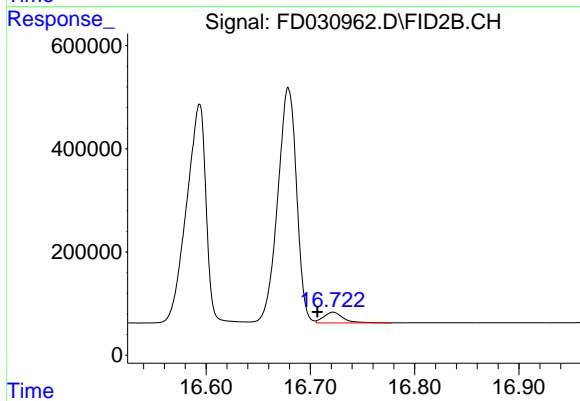
#14 n-Tetracosane (C24)

R.T.: 14.712 min  
Delta R.T.: -0.040 min  
Response: 11978796  
Conc: 92.31 ug/ml



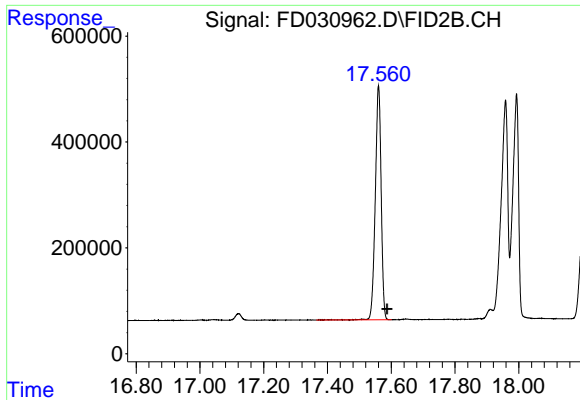
#15 n-Hexacosane (C26)

R.T.: 15.740 min  
Delta R.T.: -0.025 min  
Response: 5883277  
Conc: 45.31 ug/ml



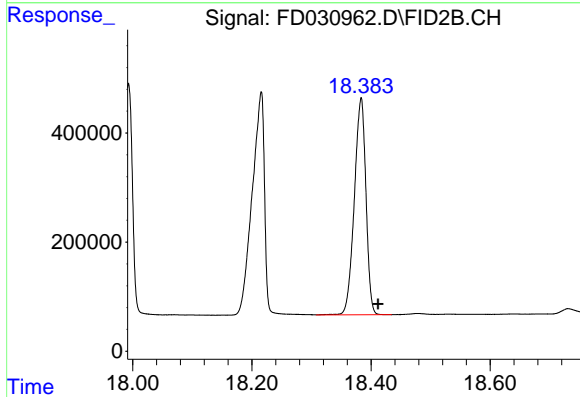
#16 n-Octacosane (C28)

R.T.: 16.722 min  
Delta R.T.: 0.015 min  
Response: 267720  
Conc: 2.07 ug/ml

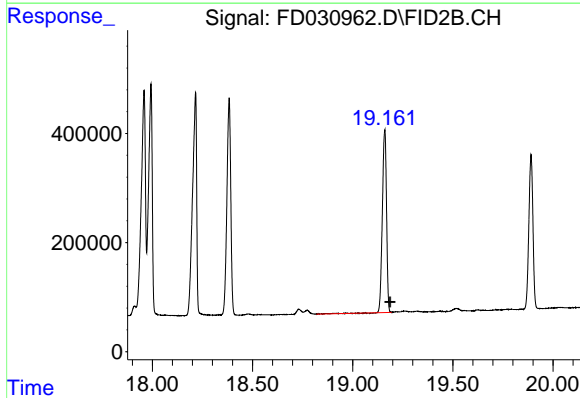


#17 n-Tricontane (C30)  
R.T.: 17.560 min  
Delta R.T.: -0.027 min  
Response: 5618697  
Conc: 43.25 ug/ml

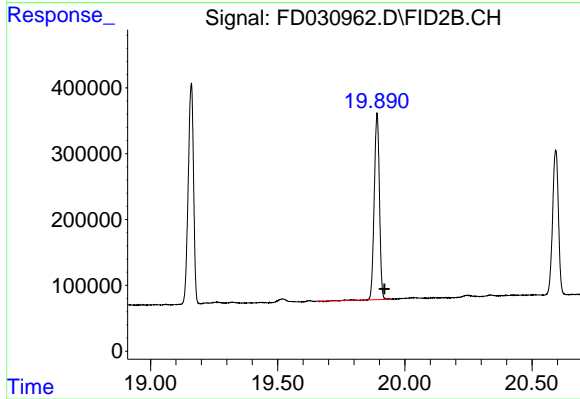
Instrument :  
FID\_D  
ClientSampleId :  
PB123730BS



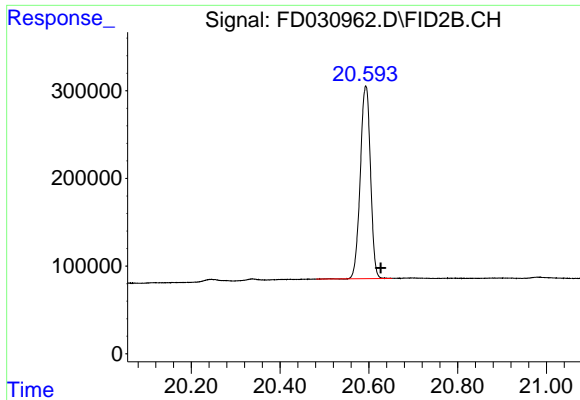
#18 n-Dotriacontane (C32)  
R.T.: 18.383 min  
Delta R.T.: -0.029 min  
Response: 5370318  
Conc: 42.64 ug/ml



#19 n-Tetratriacontane (C34)  
R.T.: 19.160 min  
Delta R.T.: -0.028 min  
Response: 4848941  
Conc: 39.84 ug/ml



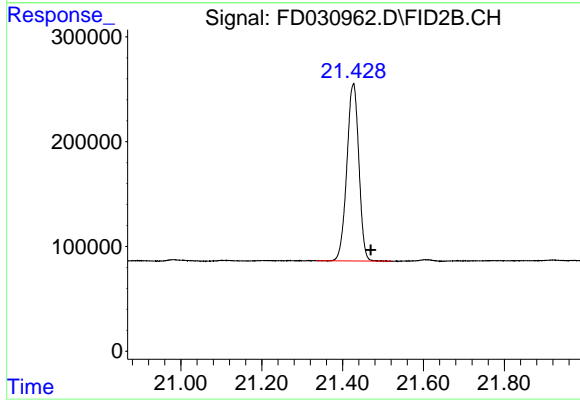
#20 n-Hexatriacontane (C36)  
R.T.: 19.890 min  
Delta R.T.: -0.029 min  
Response: 4017354  
Conc: 34.83 ug/ml



#21 n-Octatriacontane (C38)

R.T.: 20.593 min  
Delta R.T.: -0.033 min  
Response: 3498026  
Conc: 33.17 ug/ml

Instrument :  
FID\_D  
ClientSampleId :  
PB123730BS



#22 n-Tetracontane (C40)

R.T.: 21.426 min  
Delta R.T.: -0.043 min  
Response: 3488357  
Conc: 32.97 ug/ml