

Data Path : Z:\pestpcbsrv\HPCHEM1\FID_D\Data\FD101019AL\
 Data File : FD030976.D
 Signal(s) : FID2B.CH
 Acq On : 11 Oct 2019 00:11
 Operator : DD\AJ
 Sample : 20 PPM ALIPHATIC HC STD
 Misc :
 ALS Vial : 52 Sample Multiplier: 1

Instrument :
 FID_D
 ClientSampleId :
 20 PPM ALIPHATIC HC STD

Integration File: autoint1.e
 Quant Time: Oct 11 03:31:29 2019
 Quant Method : Z:\pestpcbsrv\HPCHEM1\FID_D\methods\Alaphatic EPH 092519.M
 Quant Title : GC Extractables
 QLast Update : Thu Sep 26 03:19:09 2019
 Response via : Initial Calibration
 Integrator: ChemStation 6890 Scale Mode: Large solvent peaks clipped

Volume Inj. : 1 ul
 Signal Phase : Rxi-1ms
 Signal Info : 20M x 0.18mm x 0.18um

Compound	R.T.	Response	Conc Units

System Monitoring Compounds			
9) S ortho-Terphenyl (SURR)	11.449	2980893	21.251 ug/ml
Spiked Amount	50.000	Recovery	= 42.50%
12) S 1-chlorooctadecane (S...	12.878	2253407	20.769 ug/ml
Spiked Amount	50.000	Recovery	= 41.54%
Target Compounds			
1) T n-Nonane (C9)	3.278	2764966	23.537 ug/ml
2) T n-Decane (C10)	4.333	2780983	23.686 ug/ml
3) T A~Naphthalene (C11.7)	5.902	3051091	23.384 ug/ml
4) T n-Dodecane (C12)	6.335	2824870	23.738 ug/ml
5) T A~2-methylnaphthalene...	6.952	3063163	23.237 ug/ml
6) T n-Tetradecane (C14)	8.117	2826535	23.456 ug/ml
7) T n-Hexadecane (C16)	9.707	2810855	22.984 ug/ml
8) T n-Octadecane (C18)	11.138	2775970	22.286 ug/ml
10) T n-Eicosane (C20)	12.438	2703543	21.439 ug/ml
11) T n-Heneicosane (C21)	13.044	2682805	20.983 ug/ml
13) T n-Docosane (C22)	13.626	2628313	20.517 ug/ml
14) T n-Tetracosane (C24)	14.719	2545765	19.619 ug/ml
15) T n-Hexacosane (C26)	15.731	2434179	18.746 ug/ml
16) T n-Octacosane (C28)	16.672	2363761	18.258 ug/ml
17) T n-Tricontane (C30)	17.552	2324775	17.894 ug/ml
18) T n-Dotriacontane (C32)	18.377	2256811	17.918 ug/ml
19) T n-Tetratriacontane (C34)	19.153	2207660	18.140 ug/ml
20) T n-Hexatriacontane (C36)	19.887	2110678	18.299 ug/ml
21) T n-Octatriacontane (C38)	20.591	2059022	19.523 ug/ml
22) T n-Tetracontane (C40)	21.423	2112372	19.964 ug/ml

(f)=RT Delta > 1/2 Window

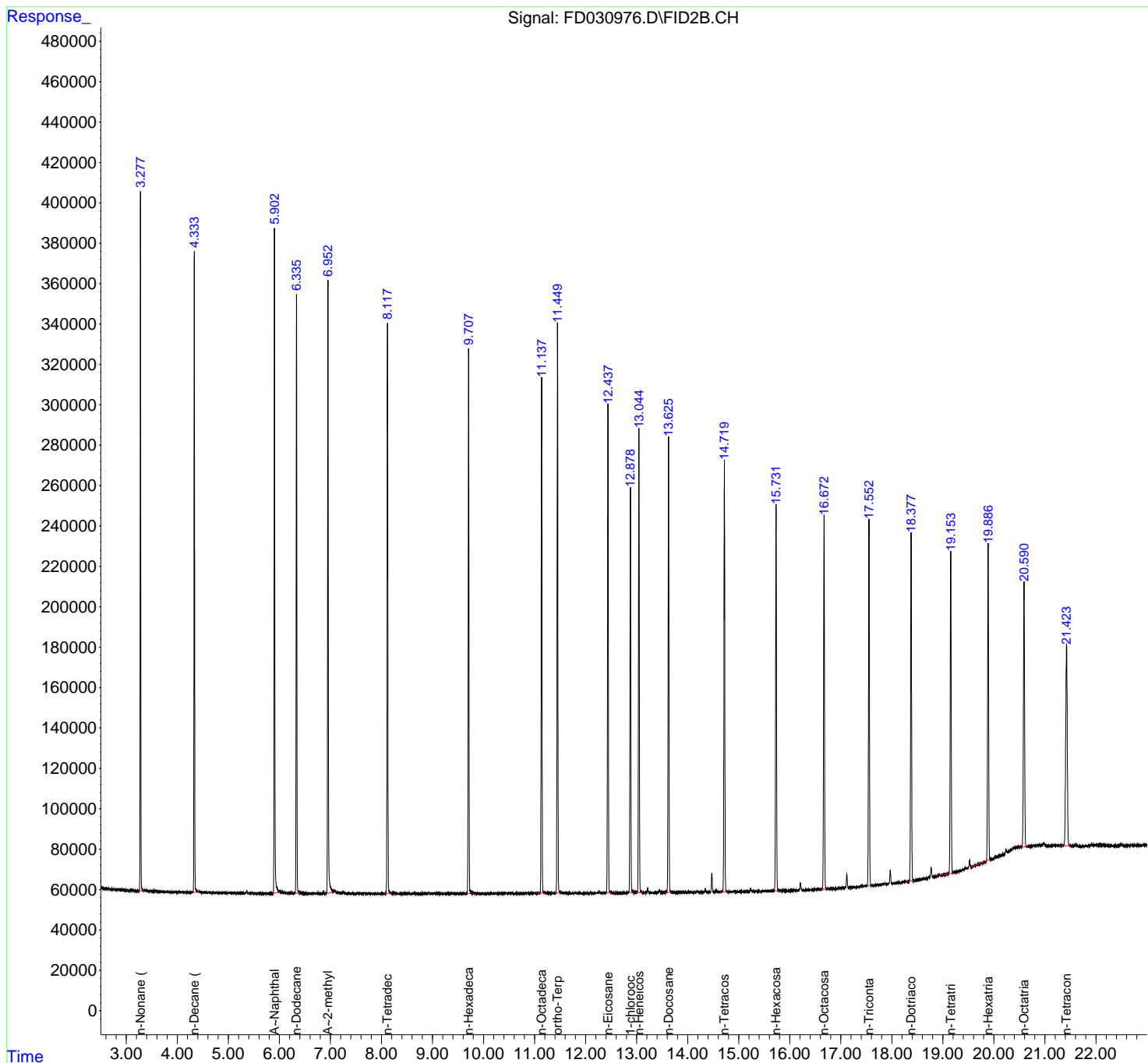
(m)=manual int.

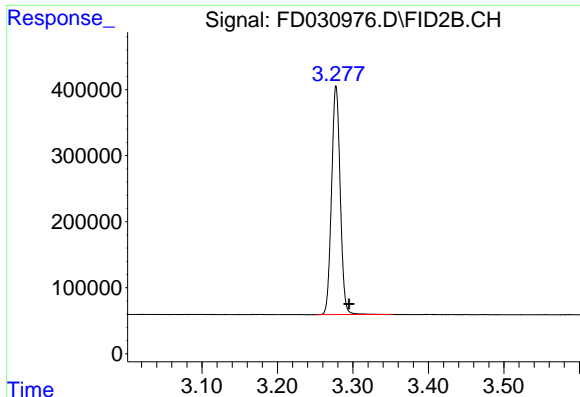
Data Path : Z:\pestpcbsrv\HPCHEM1\FID_D\Data\FD101019AL\
 Data File : FD030976.D
 Signal(s) : FID2B.CH
 Acq On : 11 Oct 2019 00:11
 Operator : DD\AJ
 Sample : 20 PPM ALIPHATIC HC STD
 Misc :
 ALS Vial : 52 Sample Multiplier: 1

Instrument :
 FID_D
 ClientSampleId :
 20 PPM ALIPHATIC HC STD

Integration File: autoint1.e
 Quant Time: Oct 11 03:31:29 2019
 Quant Method : Z:\pestpcbsrv\HPCHEM1\FID_D\methods\Alaphatic EPH 092519.M
 Quant Title : GC Extractables
 QLast Update : Thu Sep 26 03:19:09 2019
 Response via : Initial Calibration
 Integrator: ChemStation 6890 Scale Mode: Large solvent peaks clipped

Volume Inj. : 1 ul
 Signal Phase : Rxi-1ms
 Signal Info : 20M x 0.18mm x 0.18um

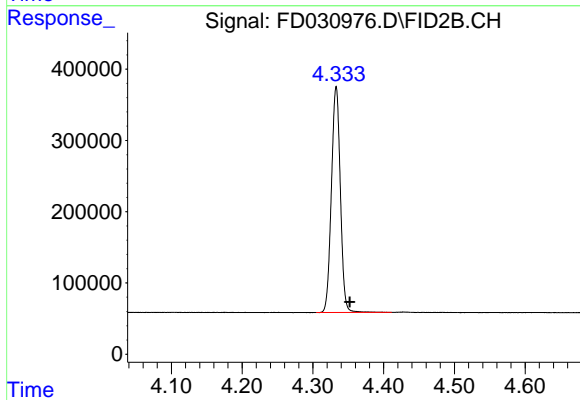




#1 n-Nonane (C9)

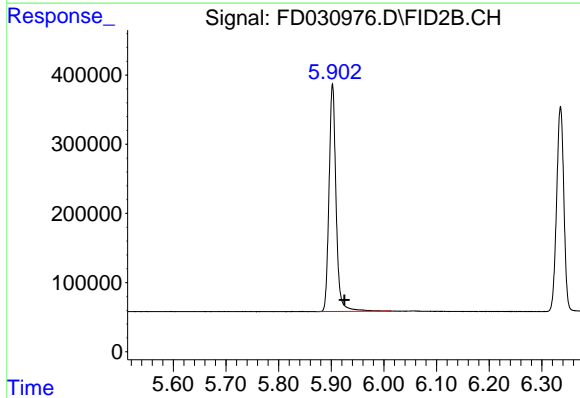
R.T.: 3.278 min
Delta R.T.: -0.017 min
Response: 2764966
Conc: 23.54 ug/ml

Instrument :
FID_D
ClientSampleId :
20 PPM ALIPHATIC HC STD



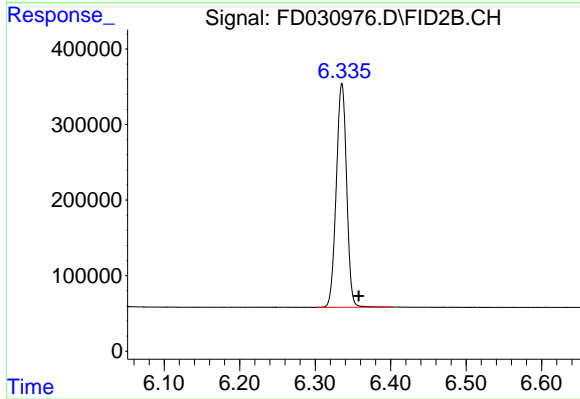
#2 n-Decane (C10)

R.T.: 4.333 min
Delta R.T.: -0.019 min
Response: 2780983
Conc: 23.69 ug/ml



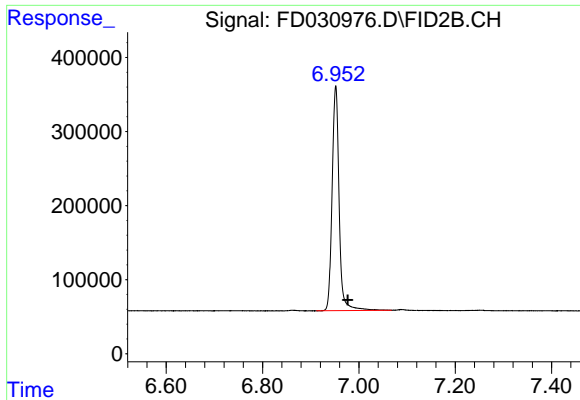
#3 A~Naphthalene (C11.7)

R.T.: 5.902 min
Delta R.T.: -0.023 min
Response: 3051091
Conc: 23.38 ug/ml



#4 n-Dodecane (C12)

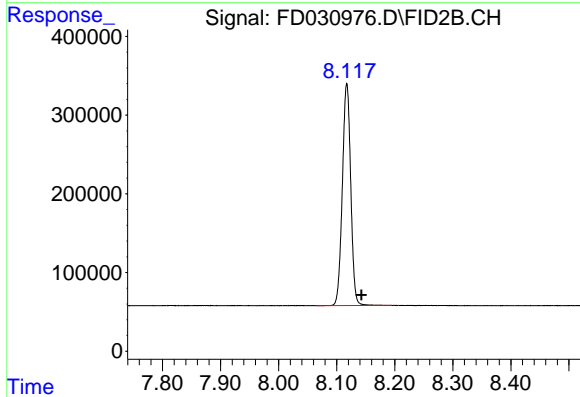
R.T.: 6.335 min
Delta R.T.: -0.022 min
Response: 2824870
Conc: 23.74 ug/ml



#5 A~2-methylnaphthalene (C12.89)

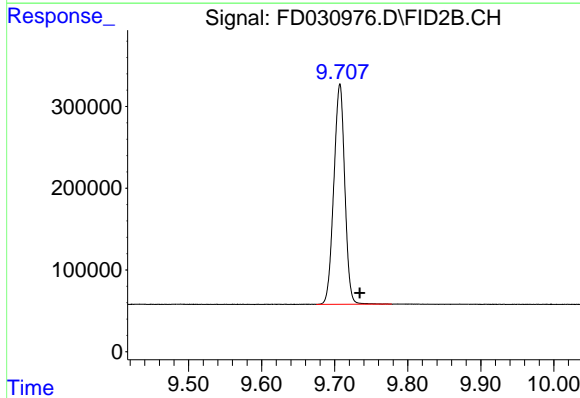
R.T.: 6.952 min
Delta R.T.: -0.025 min
Response: 3063163
Conc: 23.24 ug/ml

Instrument :
FID_D
ClientSampleId :
20 PPM ALIPHATIC HC STD



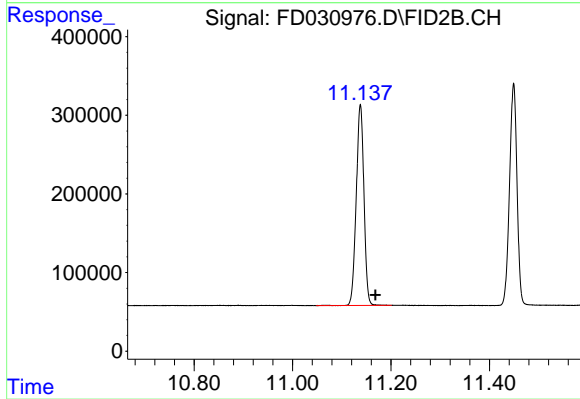
#6 n-Tetradecane (C14)

R.T.: 8.117 min
Delta R.T.: -0.025 min
Response: 2826535
Conc: 23.46 ug/ml



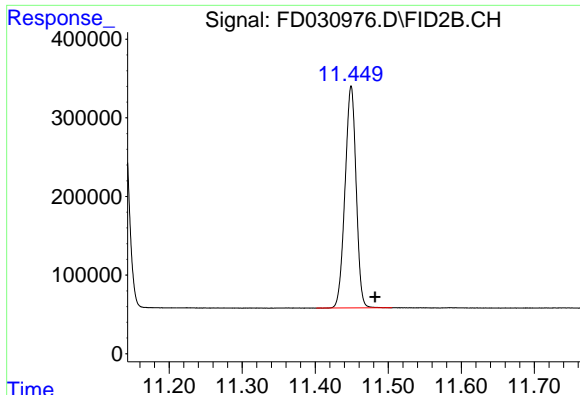
#7 n-Hexadecane (C16)

R.T.: 9.707 min
Delta R.T.: -0.027 min
Response: 2810855
Conc: 22.98 ug/ml



#8 n-Octadecane (C18)

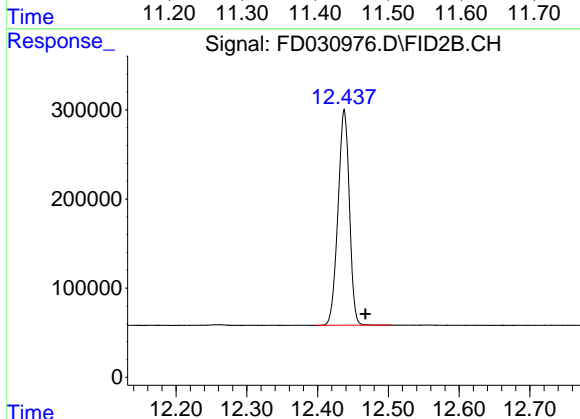
R.T.: 11.138 min
Delta R.T.: -0.031 min
Response: 2775970
Conc: 22.29 ug/ml



#9 ortho-Terphenyl (SURR)

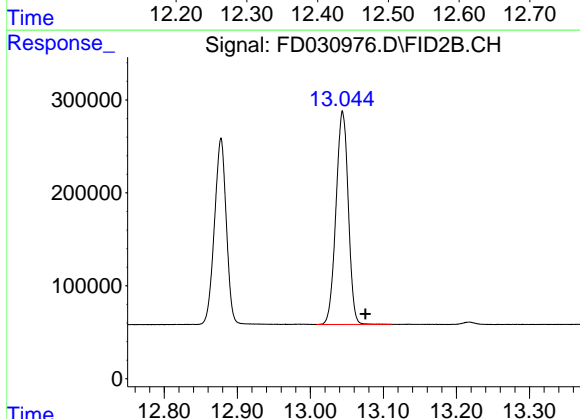
R.T.: 11.449 min
 Delta R.T.: -0.033 min
 Response: 2980893
 Conc: 21.25 ug/ml

Instrument :
 FID_D
ClientSampled :
 20 PPM ALIPHATIC HC STD



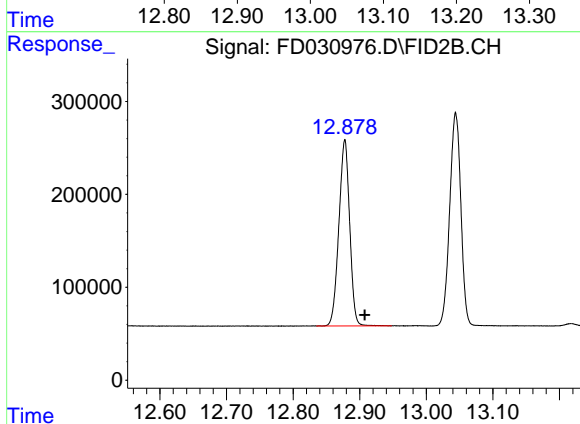
#10 n-Eicosane (C20)

R.T.: 12.438 min
 Delta R.T.: -0.030 min
 Response: 2703543
 Conc: 21.44 ug/ml



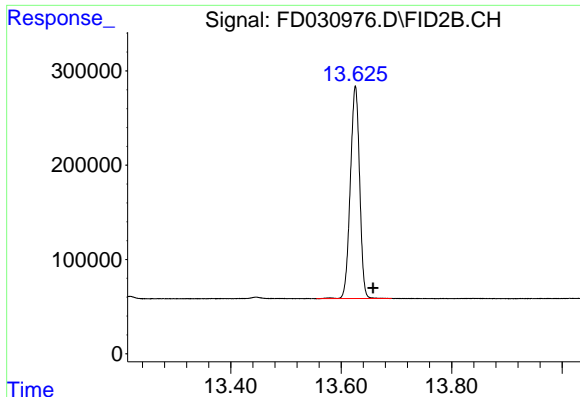
#11 n-Heneicosane (C21)

R.T.: 13.044 min
 Delta R.T.: -0.031 min
 Response: 2682805
 Conc: 20.98 ug/ml



#12 1-chlorooctadecane (SURR)

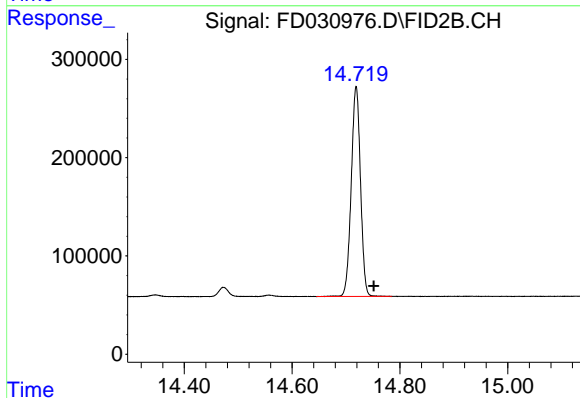
R.T.: 12.878 min
 Delta R.T.: -0.030 min
 Response: 2253407
 Conc: 20.77 ug/ml



#13 n-Docosane (C22)

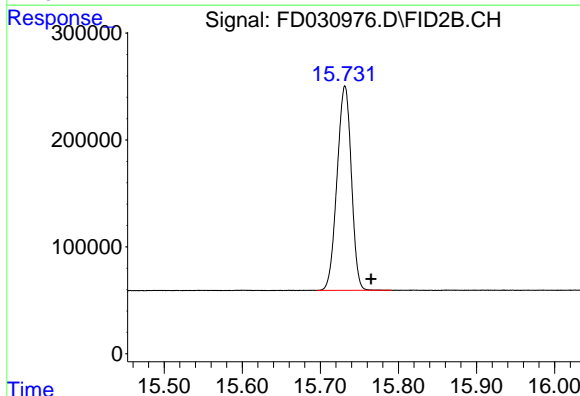
R.T.: 13.626 min
Delta R.T.: -0.032 min
Response: 2628313
Conc: 20.52 ug/ml

Instrument :
FID_D
ClientSampleId :
20 PPM ALIPHATIC HC STD



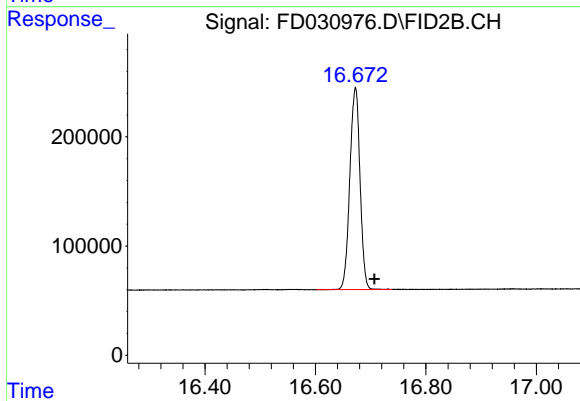
#14 n-Tetracosane (C24)

R.T.: 14.719 min
Delta R.T.: -0.033 min
Response: 2545765
Conc: 19.62 ug/ml



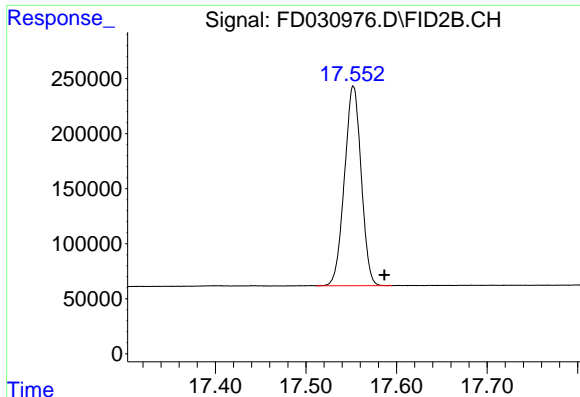
#15 n-Hexacosane (C26)

R.T.: 15.731 min
Delta R.T.: -0.033 min
Response: 2434179
Conc: 18.75 ug/ml



#16 n-Octacosane (C28)

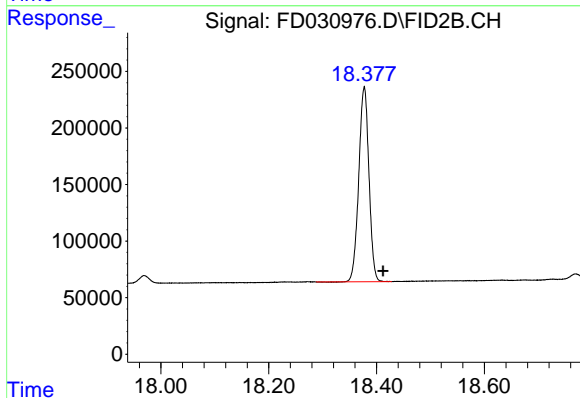
R.T.: 16.672 min
Delta R.T.: -0.035 min
Response: 2363761
Conc: 18.26 ug/ml



#17 n-Tricontane (C30)

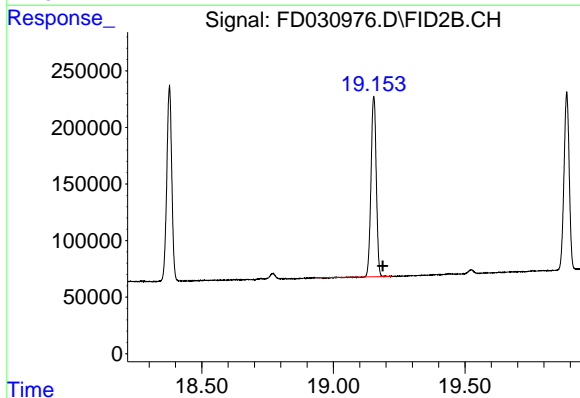
R.T.: 17.552 min
Delta R.T.: -0.034 min
Response: 2324775
Conc: 17.89 ug/ml

Instrument :
FID_D
ClientSampleId :
20 PPM ALIPHATIC HC STD



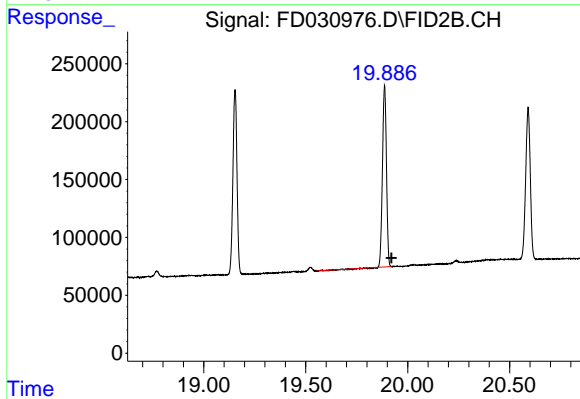
#18 n-Dotriacontane (C32)

R.T.: 18.377 min
Delta R.T.: -0.035 min
Response: 2256811
Conc: 17.92 ug/ml



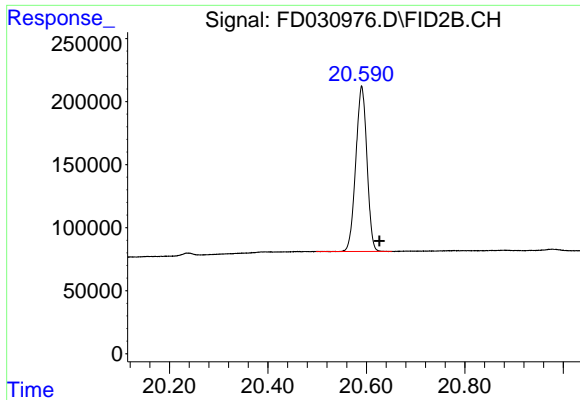
#19 n-Tetratriacontane (C34)

R.T.: 19.153 min
Delta R.T.: -0.035 min
Response: 2207660
Conc: 18.14 ug/ml



#20 n-Hexatriacontane (C36)

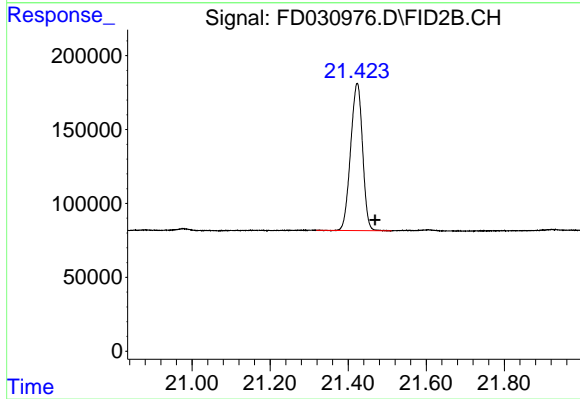
R.T.: 19.887 min
Delta R.T.: -0.033 min
Response: 2110678
Conc: 18.30 ug/ml



#21 n-Octatriacontane (C38)

R.T.: 20.591 min
Delta R.T.: -0.036 min
Response: 2059022
Conc: 19.52 ug/ml

Instrument :
FID_D
ClientSampleId :
20 PPM ALIPHATIC HC STD



#22 n-Tetracontane (C40)

R.T.: 21.423 min
Delta R.T.: -0.046 min
Response: 2112372
Conc: 19.96 ug/ml