

Data Path : Z:\pestpcbsrv\HPCHEM1\FID_D\Data\FD101019AL\
 Data File : FD030979.D
 Signal(s) : FID2B.CH
 Acq On : 11 Oct 2019 1:57
 Operator : DD\AJ
 Sample : K5111-07
 Misc : LOD 4 PPM
 ALS Vial : 24 Sample Multiplier: 1

Instrument :
 FID_D
ClientSampleId :
 LOD-MDL-WATER-01-QT4-2019

Manual Integrations
APPROVED
 Ankita
 10/14/2019 8:32:40 AM

Integration File: autoint1.e
 Quant Time: Oct 11 03:32:15 2019
 Quant Method : Z:\pestpcbsrv\HPCHEM1\FID_D\methods\Alaphatic EPH 092519.M
 Quant Title : GC Extractables
 QLast Update : Thu Sep 26 03:19:09 2019
 Response via : Initial Calibration
 Integrator: ChemStation 6890 Scale Mode: Large solvent peaks clipped

Volume Inj. : 1 ul
 Signal Phase : Rxi-1ms
 Signal Info : 20M x 0.18mm x 0.18um

Compound	R.T.	Response	Conc Units
System Monitoring Compounds			
12) S 1-chlorooctadecane (S...	12.878	3862107	35.595 ug/ml
Spiked Amount 50.000		Recovery =	71.19%
Target Compounds			
1) T n-Nonane (C9)	3.277	587368	5.000 ug/ml
2) T n-Decane (C10)	4.332	583495	4.970 ug/ml
4) T n-Dodecane (C12)	6.334	603140	5.068 ug/ml
6) T n-Tetradecane (C14)	8.117	623417	5.173 ug/ml
7) T n-Hexadecane (C16)	9.706	620347	5.072 ug/ml
8) T n-Octadecane (C18)	11.136	624552	5.014 ug/ml
10) T n-Eicosane (C20)	12.435	607372	4.816 ug/ml
11) T n-Heneicosane (C21)	13.042	596123	4.662 ug/ml
13) T n-Docosane (C22)	13.624	587772	4.588 ug/ml
14) T n-Tetracosane (C24)	14.717	567315	4.372 ug/ml
15) T n-Hexacosane (C26)	15.729	547550	4.217 ug/ml
16) T n-Octacosane (C28)	16.671	554229	4.281 ug/ml
17) T n-Tricontane (C30)	17.550	567127	4.365 ug/ml
18) T n-Dotriacontane (C32)	18.375	562187	4.464 ug/ml
19) T n-Tetratriacontane (C34)	19.152	524922	4.313 ug/ml
20) T n-Hexatriacontane (C36)	19.885	507740	4.402 ug/ml
21) T n-Octatriacontane (C38)	20.587	478346	4.535 ug/ml
22) T n-Tetracontane (C40)	21.418f	532081	5.029 ug/ml

(f)=RT Delta > 1/2 Window

(m)=manual int.

Data Path : Z:\pestpcbsrv\HPCHEM1\FID_D\Data\FD101019AL\
 Data File : FD030979.D
 Signal(s) : FID2B.CH
 Acq On : 11 Oct 2019 1:57
 Operator : DD\AJ
 Sample : K5111-07
 Misc : LOD 4 PPM
 ALS Vial : 24 Sample Multiplier: 1

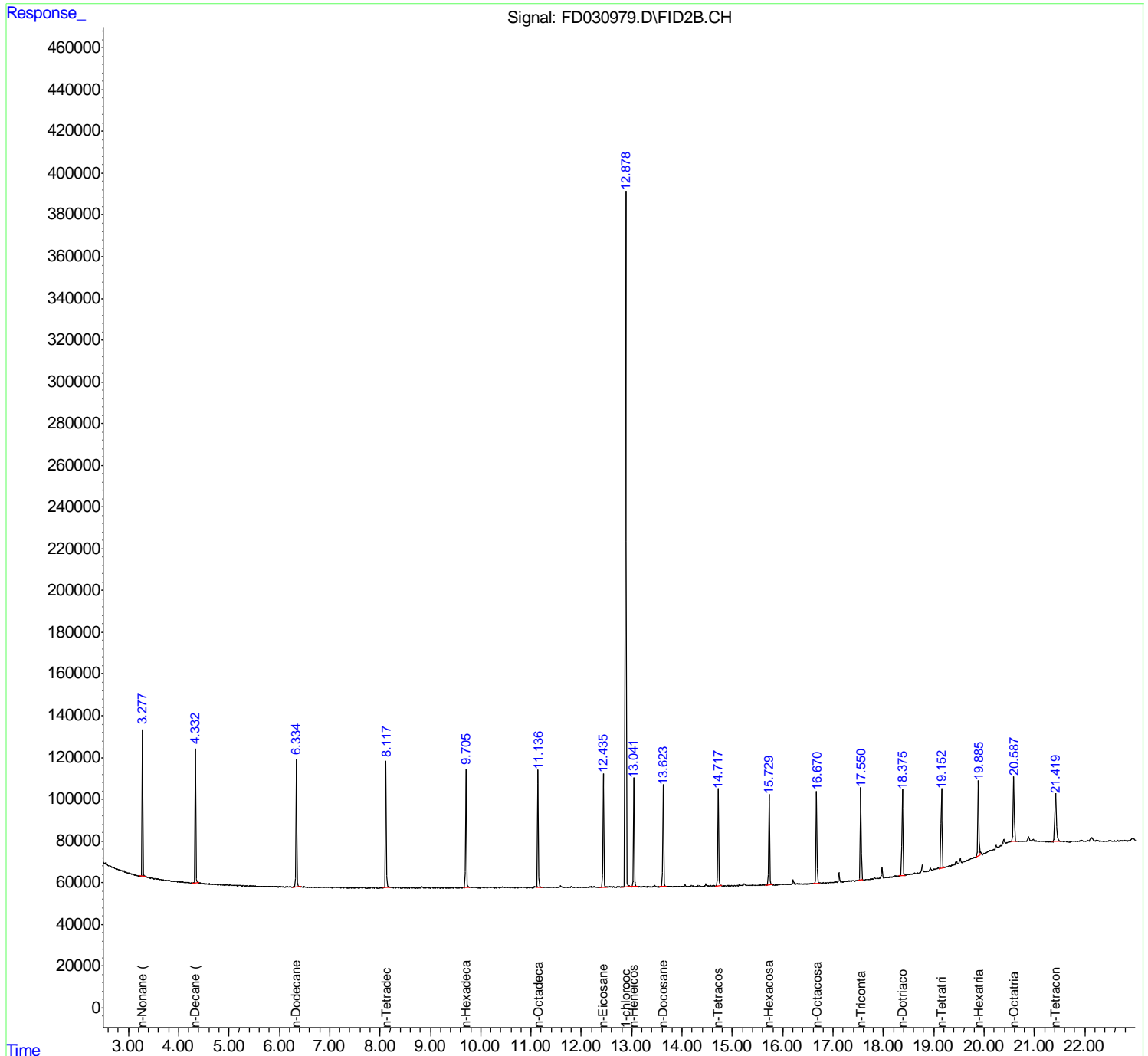
Instrument :
 FID_D
Client Sampled :
 LOD-MDL-WATER-01-QT4-2019

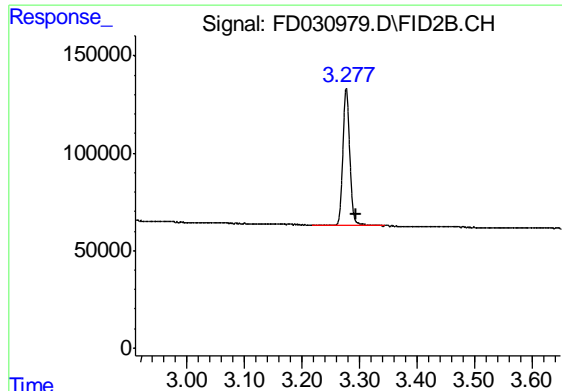
Manual Integrations
APPROVED

Ankita
 10/14/2019 8:32:40 AM

Integration File: autoint1.e
 Quant Time: Oct 11 03:32:15 2019
 Quant Method : Z:\pestpcbsrv\HPCHEM1\FID_D\methods\Alaphatic EPH 092519.M
 Quant Title : GC Extractables
 QLast Update : Thu Sep 26 03:19:09 2019
 Response via : Initial Calibration
 Integrator: ChemStation 6890 Scale Mode: Large solvent peaks clipped

Volume Inj. : 1 ul
 Signal Phase : Rxi-1ms
 Signal Info : 20M x 0.18mm x 0.18um



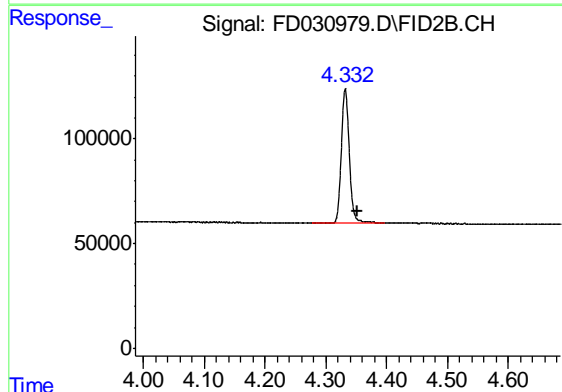


#1 n-Nonane (C9)
R.T.: 3.277 min
Delta R.T.: -0.018 min
Response: 587368
Conc: 5.00 ug/ml

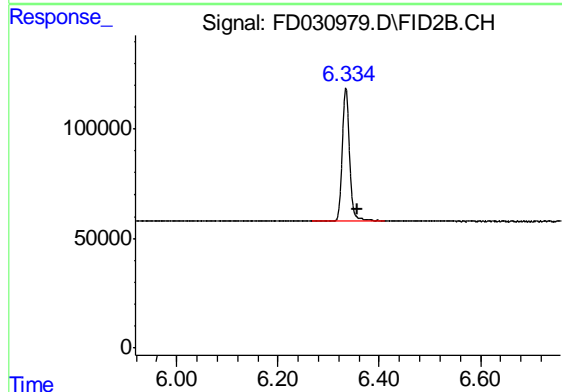
Instrument :
FID_D
ClientSampleId :
LOD-MDL-WATER-01-QT4-2019

Manual Integrations
APPROVED

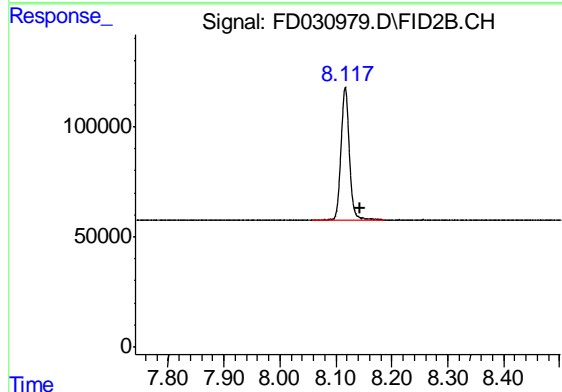
Ankita
10/14/2019 8:32:40 AM



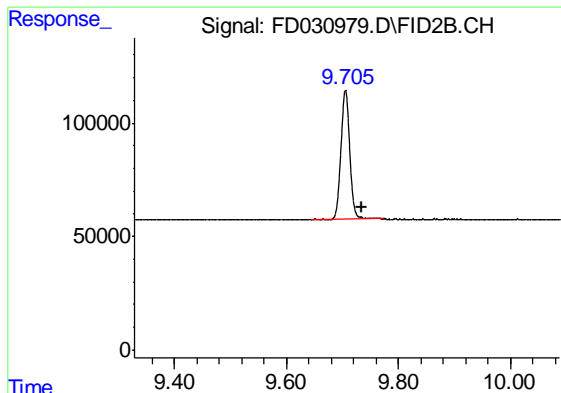
#2 n-Decane (C10)
R.T.: 4.332 min
Delta R.T.: -0.020 min
Response: 583495
Conc: 4.97 ug/ml



#4 n-Dodecane (C12)
R.T.: 6.334 min
Delta R.T.: -0.023 min
Response: 603140
Conc: 5.07 ug/ml



#6 n-Tetradecane (C14)
R.T.: 8.117 min
Delta R.T.: -0.026 min
Response: 623417
Conc: 5.17 ug/ml



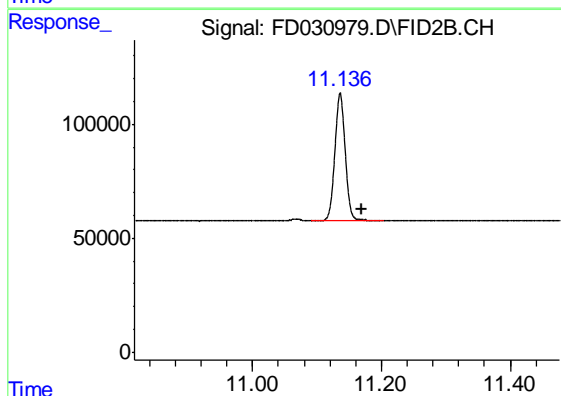
#7 n-Hexadecane (C16)

R.T.: 9.706 min
 Delta R.T.: -0.029 min
 Response: 620347
 Conc: 5.07 ug/ml

Instrument :
 FID_D
 ClientSampleId :
 LOD-MDL-WATER-01-QT4-2019

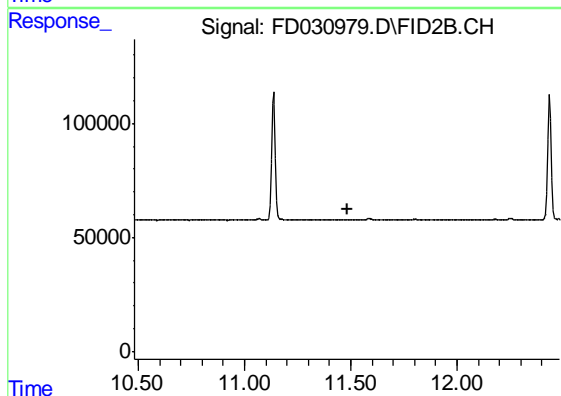
Manual Integrations
 APPROVED

Ankita
 10/14/2019 8:32:40 AM



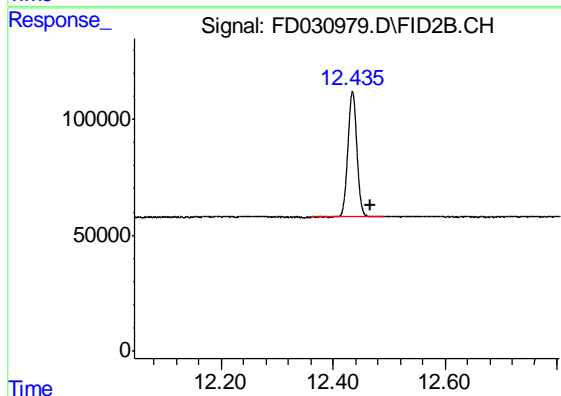
#8 n-Octadecane (C18)

R.T.: 11.136 min
 Delta R.T.: -0.033 min
 Response: 624552
 Conc: 5.01 ug/ml



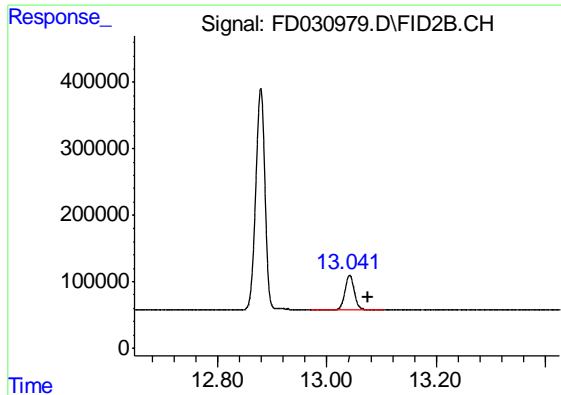
#9 ortho-Terphenyl (SURR)

R.T.: 0.000 min
 Exp R.T. : 11.482 min
 Response: 0
 Conc: N.D.



#10 n-Eicosane (C20)

R.T.: 12.435 min
 Delta R.T.: -0.033 min
 Response: 607372
 Conc: 4.82 ug/ml



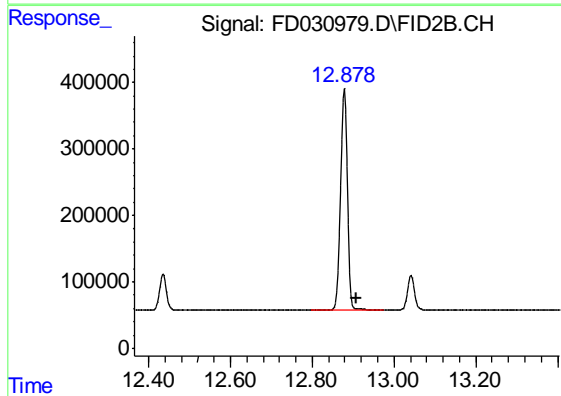
#11 n-Heneicosane (C21)

R.T.: 13.042 min
 Delta R.T.: -0.034 min
 Response: 596123
 Conc: 4.66 ug/ml

Instrument :
 FID_D
 ClientSampleId :
 LOD-MDL-WATER-01-QT4-2019

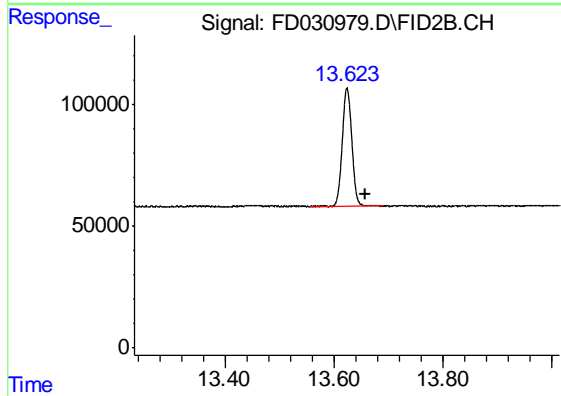
Manual Integrations
 APPROVED

Ankita
 10/14/2019 8:32:40 AM



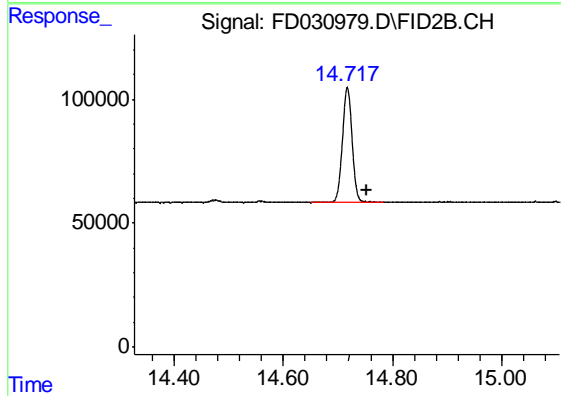
#12 1-chlorooctadecane (SURR)

R.T.: 12.878 min
 Delta R.T.: -0.029 min
 Response: 3862107
 Conc: 35.60 ug/ml



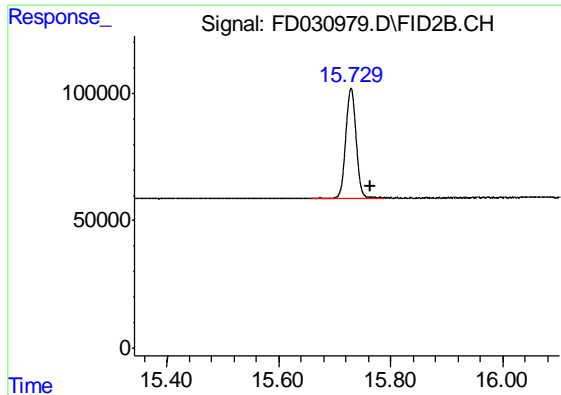
#13 n-Docosane (C22)

R.T.: 13.624 min
 Delta R.T.: -0.034 min
 Response: 587772
 Conc: 4.59 ug/ml



#14 n-Tetracosane (C24)

R.T.: 14.717 min
 Delta R.T.: -0.034 min
 Response: 567315
 Conc: 4.37 ug/ml



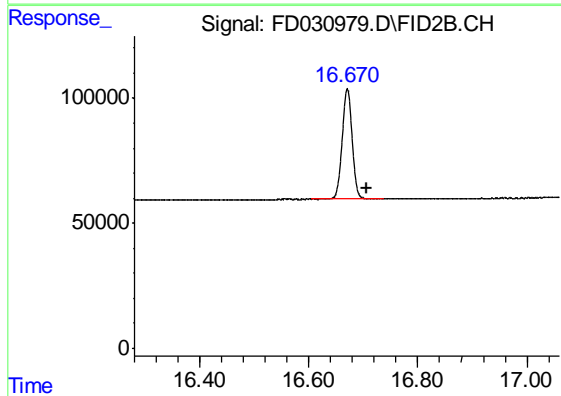
#15 n-Hexacosane (C26)

R.T.: 15.729 min
Delta R.T.: -0.036 min
Response: 547550
Conc: 4.22 ug/ml

Instrument :
FID_D
ClientSampleId :
LOD-MDL-WATER-01-QT4-2019

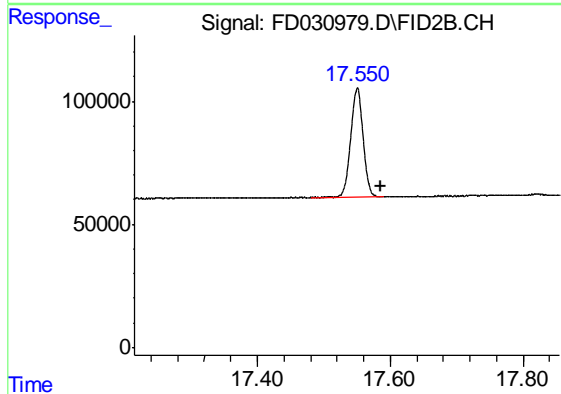
Manual Integrations
APPROVED

Ankita
10/14/2019 8:32:40 AM



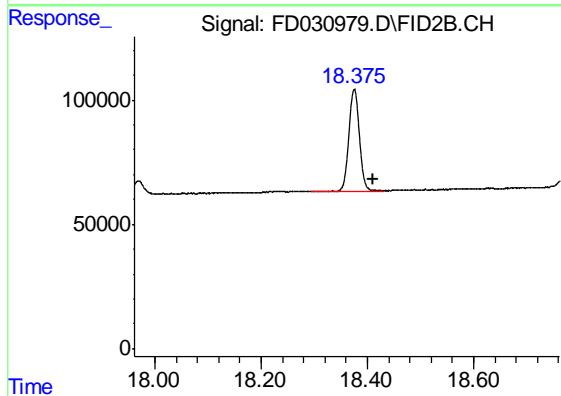
#16 n-Octacosane (C28)

R.T.: 16.671 min
Delta R.T.: -0.036 min
Response: 554229
Conc: 4.28 ug/ml



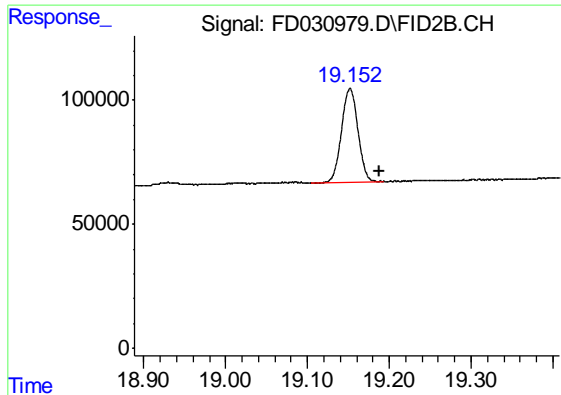
#17 n-Tricontane (C30)

R.T.: 17.550 min
Delta R.T.: -0.036 min
Response: 567127
Conc: 4.37 ug/ml



#18 n-Dotriacontane (C32)

R.T.: 18.375 min
Delta R.T.: -0.036 min
Response: 562187
Conc: 4.46 ug/ml



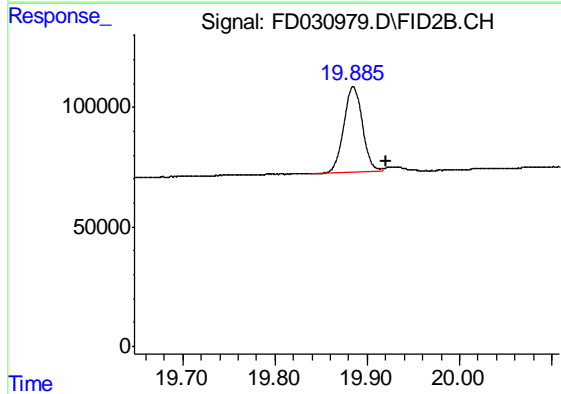
#19 n-Tetratriacontane (C34)

R.T.: 19.152 min
 Delta R.T.: -0.036 min
 Response: 524922
 Conc: 4.31 ug/ml

Instrument :
 FID_D
 ClientSampleId :
 LOD-MDL-WATER-01-QT4-2019

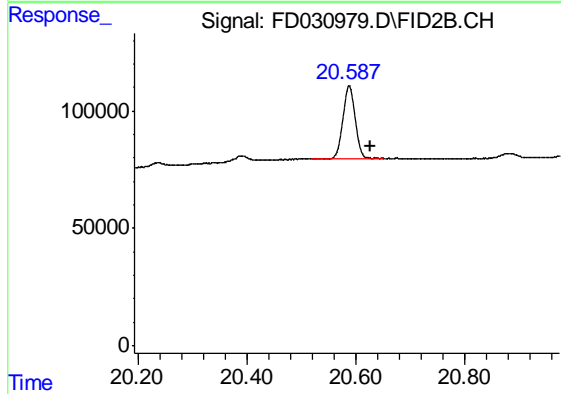
Manual Integrations
 APPROVED

Ankita
 10/14/2019 8:32:40 AM



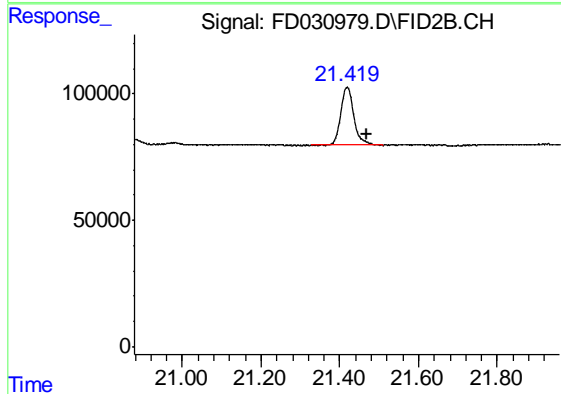
#20 n-Hexatriacontane (C36)

R.T.: 19.885 min
 Delta R.T.: -0.035 min
 Response: 507740
 Conc: 4.40 ug/ml m



#21 n-Octatriacontane (C38)

R.T.: 20.587 min
 Delta R.T.: -0.039 min
 Response: 478346
 Conc: 4.54 ug/ml



#22 n-Tetracontane (C40)

R.T.: 21.418 min
 Delta R.T.: -0.051 min
 Response: 532081
 Conc: 5.03 ug/ml