

Data Path : Z:\pestpcbsrv\HPCHEM1\FID_D\Data\FD101420AR\
 Data File : FD035026.D
 Signal(s) : FID2B.CH
 Acq On : 14 Oct 2020 13:31
 Operator : DD\AJ
 Sample : PB132311BL
 Misc :
 ALS Vial : 53 Sample Multiplier: 1

Integration File: autoint1.e
 Quant Time: Oct 15 02:45:24 2020
 Quant Method : Z:\pestpcbsrv\HPCHEM1\FID_D\methods\Aromatic EPH 100120.M
 Quant Title : GC Extractables
 QLast Update : Fri Oct 02 10:31:12 2020
 Response via : Initial Calibration
 Integrator: ChemStation 6890 Scale Mode: Large solvent peaks clipped

Volume Inj. : 1 µl
 Signal Phase : Rxi-1ms
 Signal Info : 20M x 0.18mm x 0.18µm

Compound	R.T.	Response	Conc Units

System Monitoring Compounds			
4) S 2-Bromonaphthalene (S...	7.667	5250549	45.042 ug/ml
Spiked Amount 50.000		Recovery =	90.08%
6) S 2-Fluorobiphenyl (SURR)	8.532	3517493	42.845 ug/ml
Spiked Amount 50.000 Range 0 - 131		Recovery =	85.69%
11) S ortho-Terphenyl (SURR)	11.572	3173636	23.144 ug/ml
Spiked Amount 50.000		Recovery =	46.29%

Target Compounds

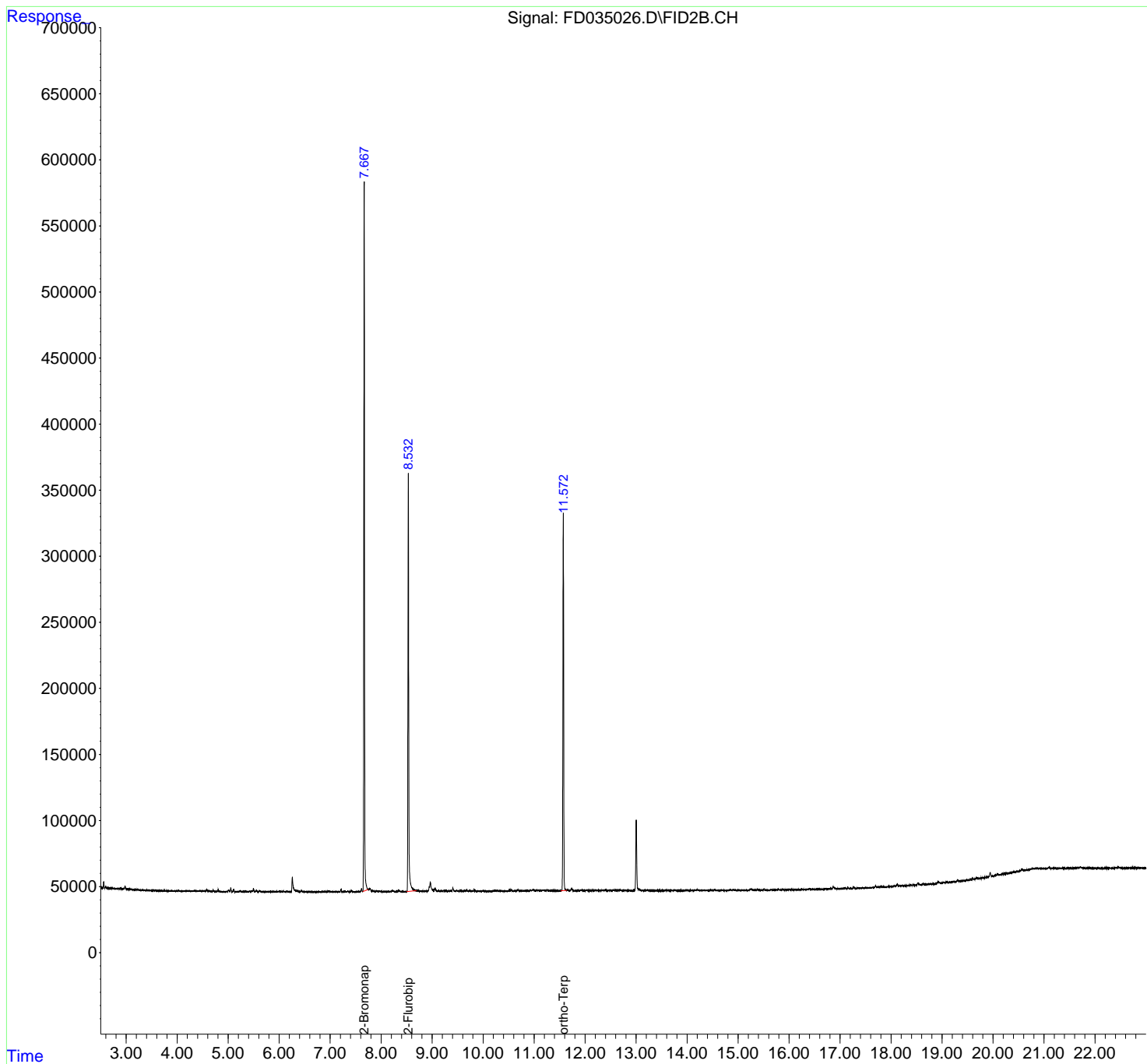
(f)=RT Delta > 1/2 Window

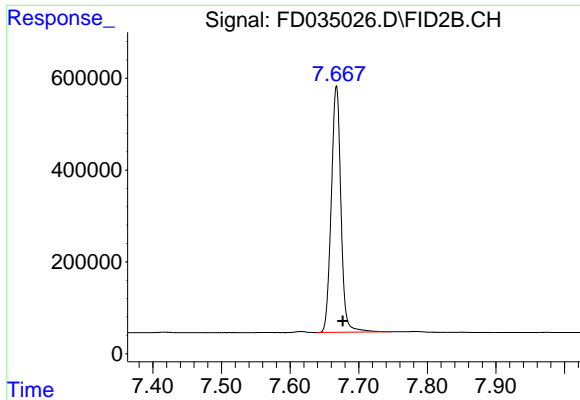
(m)=manual int.

Data Path : Z:\pestpcbsrv\HPCHEM1\FID_D\Data\FD101420AR\
 Data File : FD035026.D
 Signal(s) : FID2B.CH
 Acq On : 14 Oct 2020 13:31
 Operator : DD\AJ
 Sample : PB132311BL
 Misc :
 ALS Vial : 53 Sample Multiplier: 1

Integration File: autoint1.e
 Quant Time: Oct 15 02:45:24 2020
 Quant Method : Z:\pestpcbsrv\HPCHEM1\FID_D\methods\Aromatic EPH 100120.M
 Quant Title : GC Extractables
 QLast Update : Fri Oct 02 10:31:12 2020
 Response via : Initial Calibration
 Integrator: ChemStation 6890 Scale Mode: Large solvent peaks clipped

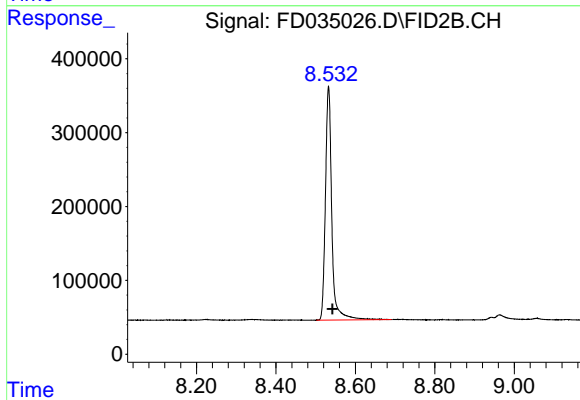
Volume Inj. : 1 µl
 Signal Phase : Rxi-1ms
 Signal Info : 20M x 0.18mm x 0.18µm





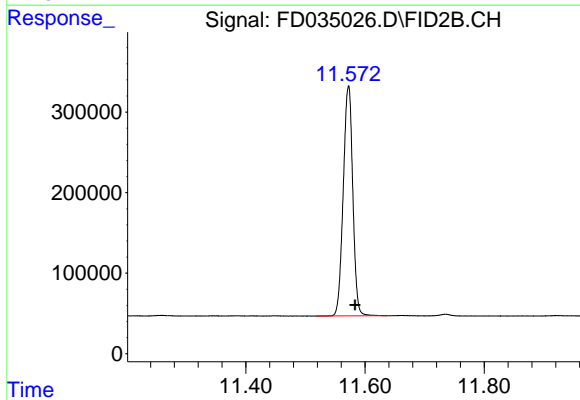
#4 2-Bromonaphthalene (SURR)

R.T.: 7.667 min
Delta R.T.: -0.009 min
Response: 5250549
Conc: 45.04 ug/ml



#6 2-Fluorobiphenyl (SURR)

R.T.: 8.532 min
Delta R.T.: -0.010 min
Response: 3517493
Conc: 42.84 ug/ml



#11 ortho-Terphenyl (SURR)

R.T.: 11.572 min
Delta R.T.: -0.011 min
Response: 3173636
Conc: 23.14 ug/ml